

# Statewide Rail Update

**Kevin Page**  
**Chief of Rail Transportation**

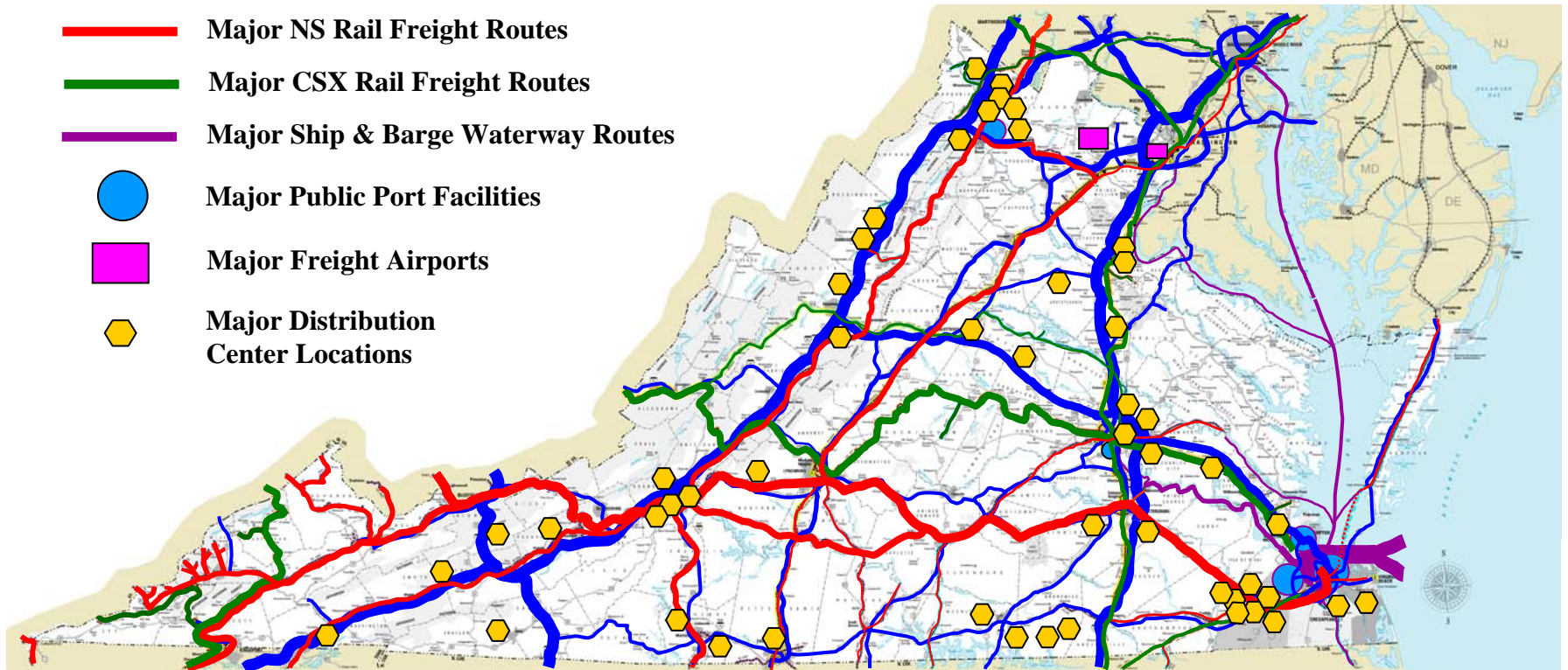
**CTB Workshop**  
**March 20, 2008**

# Freight Flows in Virginia

## Combined Roadway, Rail, Waterway and Aviation Modes

### LEGEND

-  Major Truck Freight Routes
-  Major NS Rail Freight Routes
-  Major CSX Rail Freight Routes
-  Major Ship & Barge Waterway Routes
-  Major Public Port Facilities
-  Major Freight Airports
-  Major Distribution Center Locations



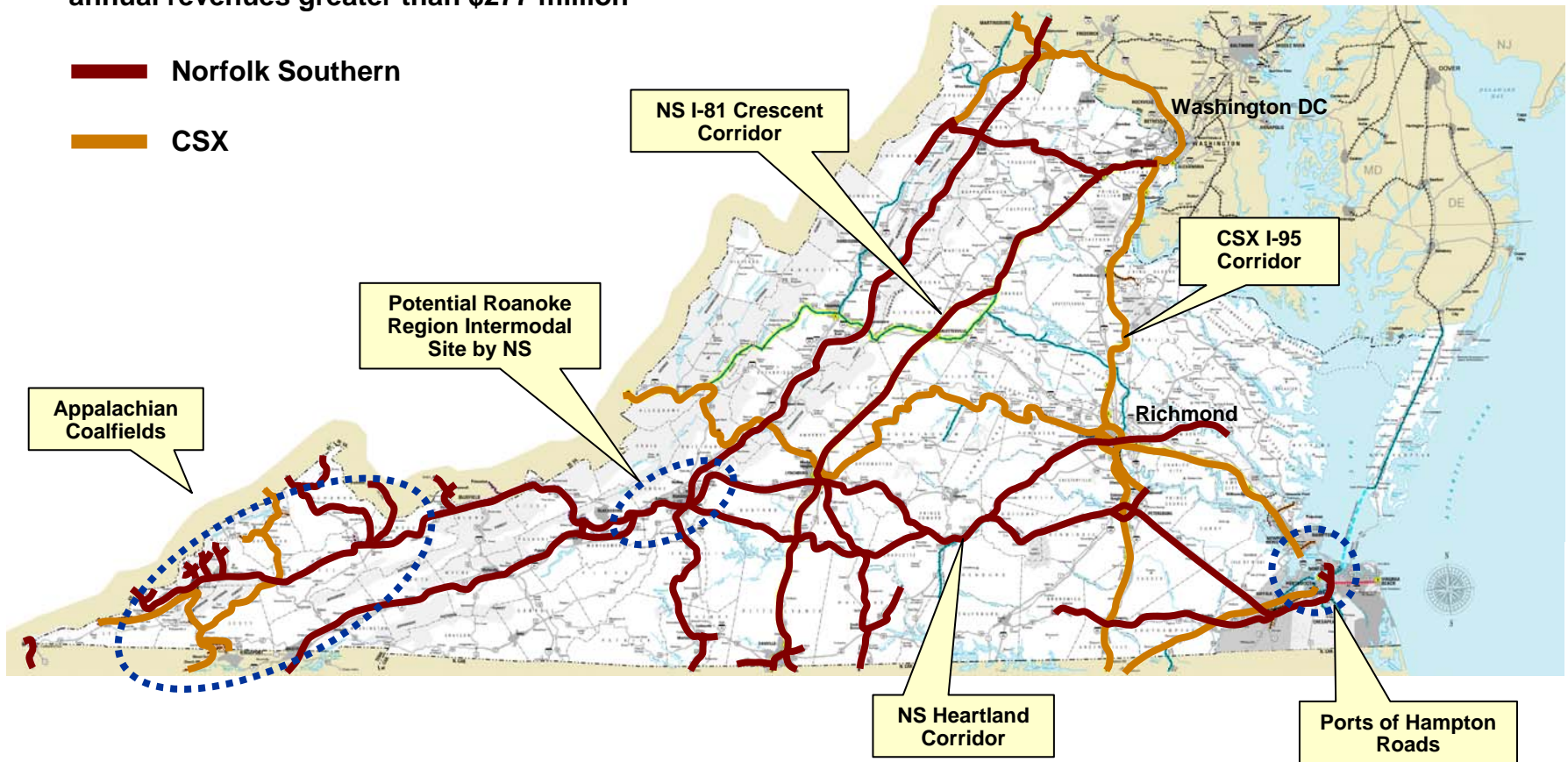
Note: Thickness of lines denotes relative cargo volume for each mode (2002 Data)

# Class I Freight Railroads

Definition: Class I freight railroads have annual revenues greater than \$277 million

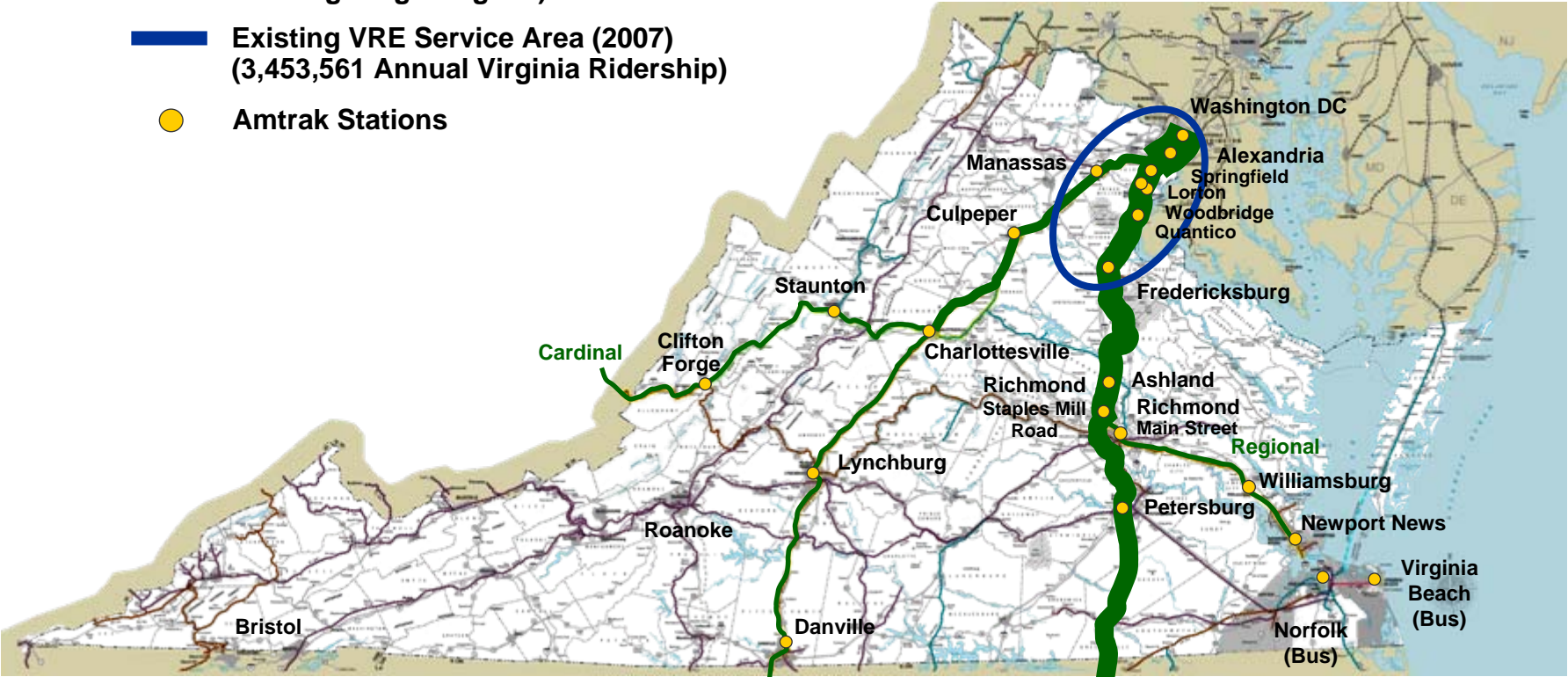
 Norfolk Southern

 CSX



# Passenger Rail

- █ Existing Amtrak Routes (2007)  
(929,594 Annual Ridership Boardings and Alightings Virginia)
- █ Existing VRE Service Area (2007)  
(3,453,561 Annual Virginia Ridership)
- Amtrak Stations



Note: Green Line Width = Relative Number of Amtrak Passenger Routes

Auto Train  
Carolinian  
Palmetto  
Silver Meteor  
Silver Star

March 20, 2008

# Statewide Rail Plan Overview

- ❑ Improving upon the 2004 Statewide Rail Plan
- ❑ Update will include a constrained financial plan for SYIP
  - Estimated costs for an unconstrained plan will also be provided for both short-term implementation plan and long-term vision plan (2035)
    - Costs for passenger and freight rail will be based on realistic estimates generated through preliminary or final design and engineering
    - Brings years of study efforts into an actionable document
      - Based on VTRANS 2035 update and other statewide planning and analysis studies
- ❑ Prioritize major freight and passenger rail corridors
  - Identify improvement needs
    - Passenger on-time performance (95% goal)
    - Freight corridor developments
  - Identify costs
- ❑ Rail Plan will contain a six-year short term implementation plan and a 2035 long term vision plan

# Build on Guiding Principles of Rail Enhancement Fund

- ❑ Intended to support growth of freight and/or passenger rail transportation
  - Railways or railroad equipment
  - Rolling stock
  - Rights-of-Way
  - Facilities
- ❑ Projects funded by minimum 30% local/private funds and maximum 70% Commonwealth funds
- ❑ Project policy goals
  - Has a public benefit ratio greater than or equal to one
  - Addresses needs identified in state, regional, or local plans
  - Encourages and supports economic development
  - Focuses on quick turn-around, high impact projects that lead to an integrated SYIP for passenger and freight rail
  - Contributes to the effectiveness of the entire multimodal transportation system

# Statewide Rail Plan Schedule

- ❑ February 2008: began plan development
- ❑ April 2008: presentation to CTB on US 29 Corridor
- ❑ April – May 2008: As part of the SYIP hearings, public input will be received on the Statewide Rail Plan Update
- ❑ July 2008: brief CTB on draft document
- ❑ July 31 2008: finalize and complete statewide rail plan
- ❑ September 30, 2008: resource allocation report



Virginia Department of Rail and Public Transportation  
*The Smartest Distance Between Two Points*

[www.drpt.virginia.gov](http://www.drpt.virginia.gov)