



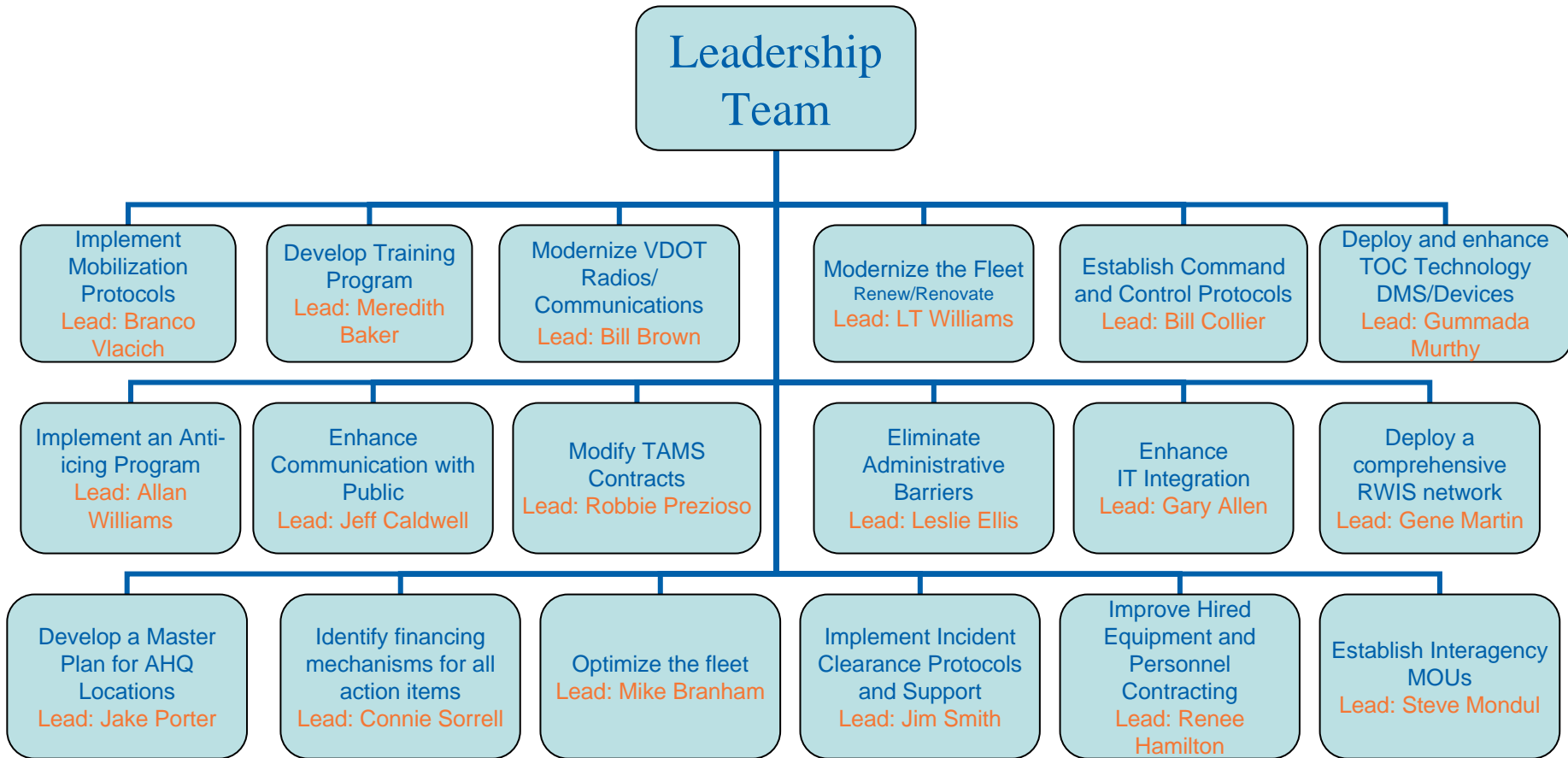
A Commitment to Focus -
An Emergency Response
Action Plan – Progress Report

September 17, 2008
David S. Ekern, P.E.
Commissioner

The Goals

- *Create a department-wide, comprehensive, and coordinated incident-response focus*
- *Realign funding, equipment, and protocols to strengthen all stages of incident response*
- *Balance VDOT and contract resources to improve snow and ice management*
- *Eliminate barriers that hinder response*

Implementation Team Structure



Central Plan Themes

- Improve communication with the public and media
- Implement best practices for incident response statewide
- Adopt the NIMS principles and procedures
- Improve and institutionalize incident response training
- Improve coordination between other agencies and private sector involved in incident response.



Accomplishments

- The Role of Traffic Management Centers clarified as Traffic Operations Centers
- “Duty Officer” is active 24/7/365 in all Districts
- 3655 miles of Significant Roads are to be Anti-Iced the winter of 2008/2009
- Anti-Icing is included in TAMS Snow Plans



- RWIS with Dedicated Weather Forecasting will support Statewide Winter Emergency Response

Training



- TERI – Transportation Emergency Institute has been created – **150 Trained Duty Officers – TAMS Leaders Incorporated in Training**

- TERI #1 Aug 17 thru 22
40 Duty Officers Trained
- TERI #2 Sept 7 thru 12
35 Duty Officers Trained
- TERI #3 Sept 21 thru 26
- TERI #4 Oct 5 thru 10

- Operator training at a local level – **Begins mid October**

Anti-Icing

Anti-Icing Lanes Miles 2008-2009

Bristol	207
Salem	516
Lynchburg	474
Richmond	329
Hampton Roads	213
Fredericksburg	280
Culpeper	219
Staunton	319
NOVA	1097
Total	3655



- TAMS Contractor Snow Plans include Anti-Icing on the Interstate System

Status of VDOT's RWIS Program

Number of Sites

46 fixed RWIS sites across all 9 Districts

21 Smart RWIS sites deployed along I-81 & I-77

5 mobile RWIS with cameras and traffic sensors

Operational Status

5 sites awaiting restoration of power and/or communications

1 offline site to be fully upgraded

Standalone deployments to be replaced

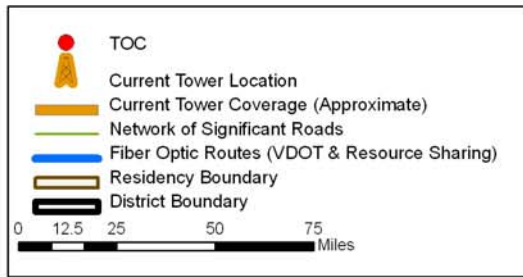
New RWIS Installations in 2008

3 sites on bridges

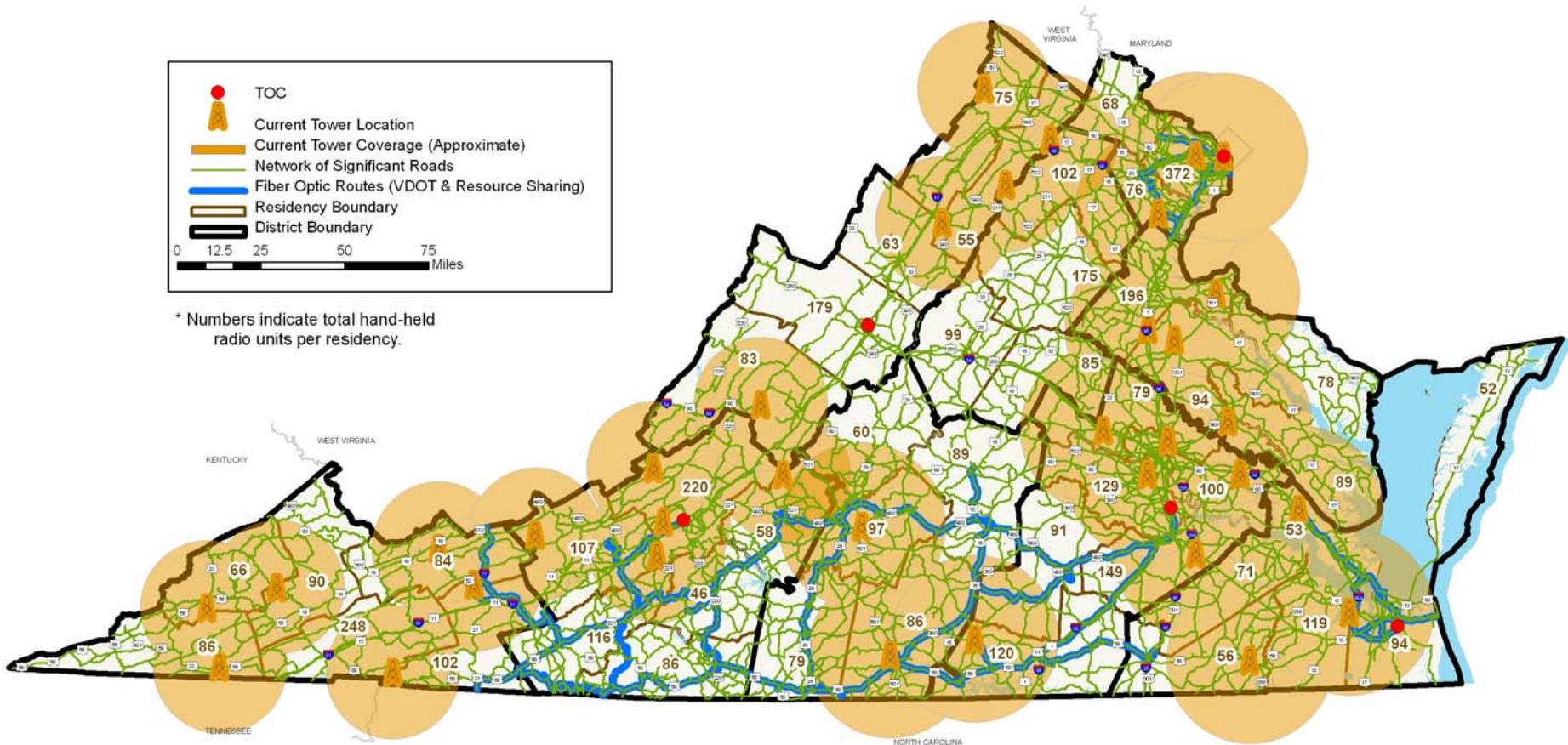
2 in Salem

8 sites in the Springfield Interchange

18,000 Mile Network of Significant Roads with Radio Coverage and Fiber Optic Locations



* Numbers indicate total hand-held radio units per residency.



THE MISSION

Plan, deliver, operate and maintain a transportation system that is safe, enables the easy movement of people and goods, enhances the economy, and improves the quality of life.