



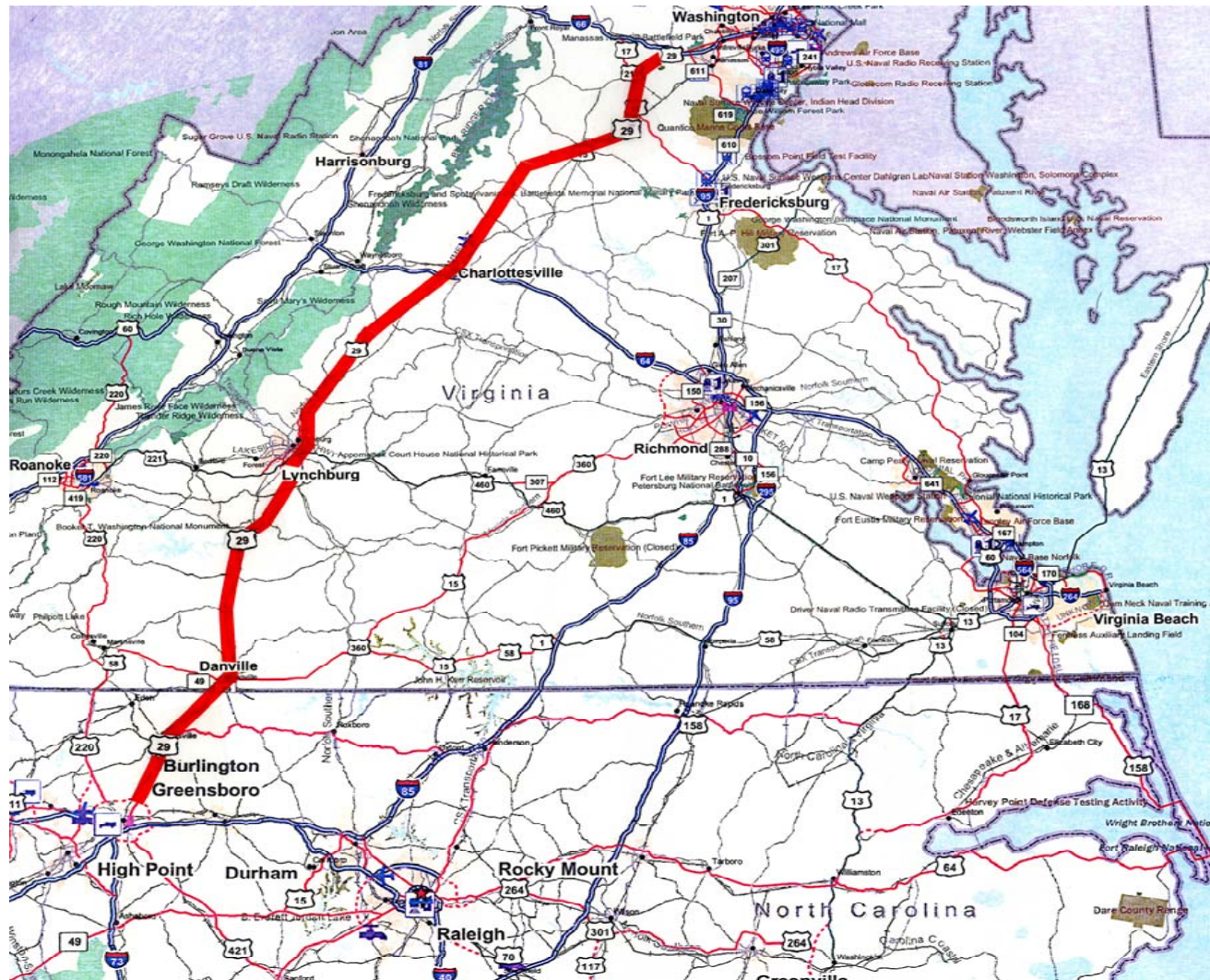
Route 29 Transportation Corridor

April 16, 2008

Mary Lynn Tischer

Director, Office of Multi-Modal Planning

Route 29 Corridor (Virginia and North Carolina)



The Route 29 Corridor

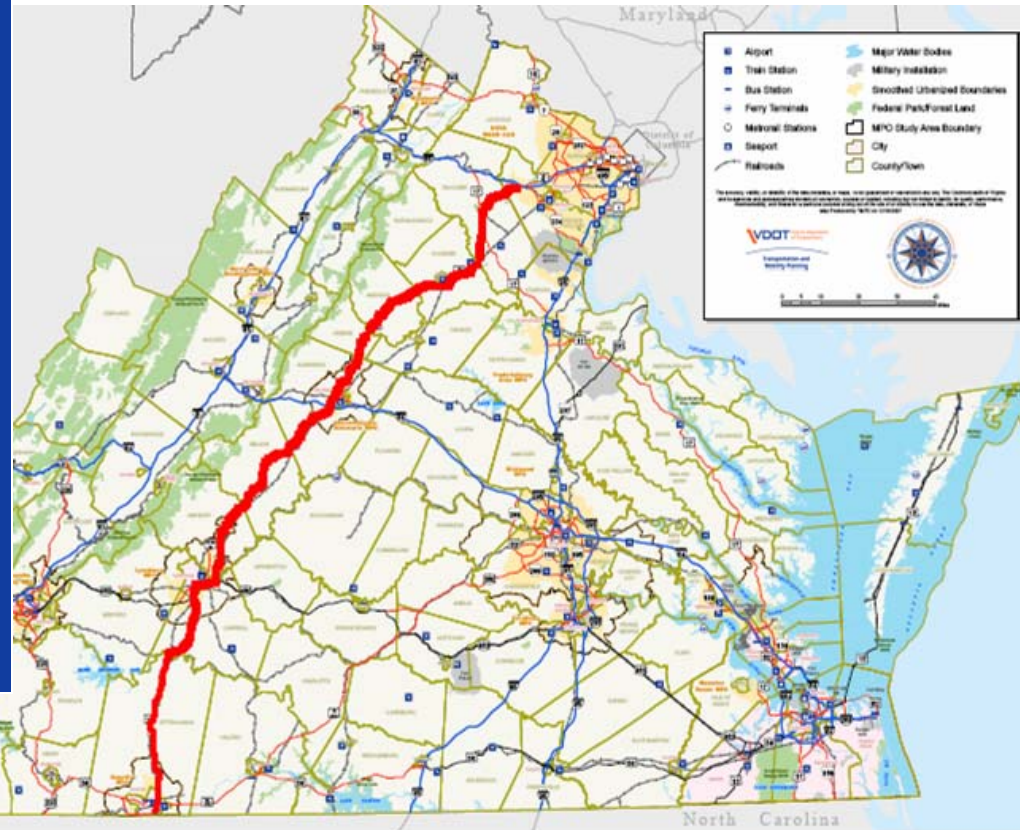
Route 29 Corridor – 219 miles from North Carolina to I-66 at Gainesville.

Route 29 – NHS Route designated by Congress to serve interstate travel and the movement of goods.

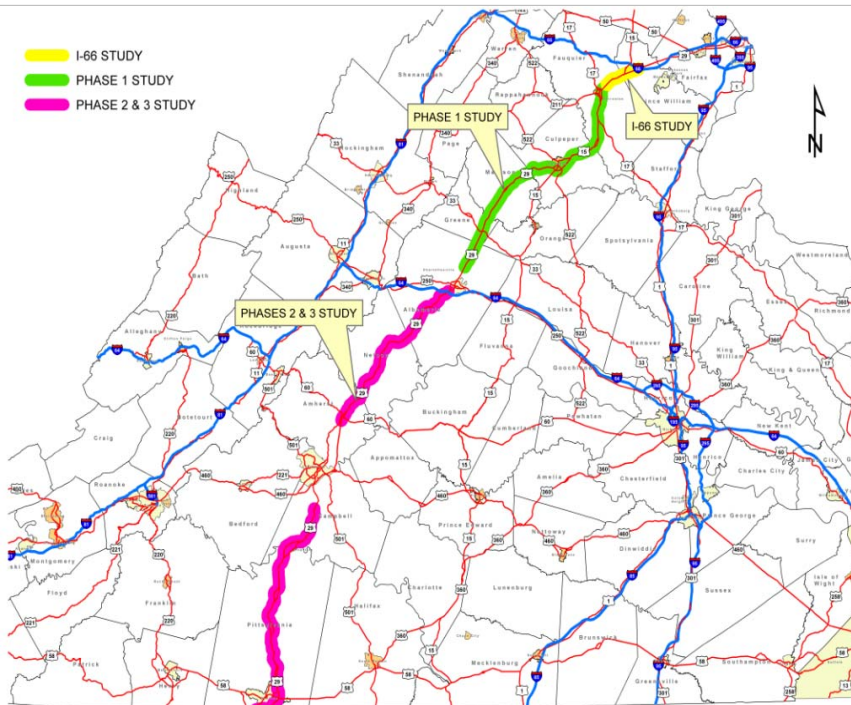
Serves long distance travel – connects 3 MPO areas – rural areas and heavy commuter travel to NOVA.

Route 29 also carries large volumes of local traffic which conflicts with its service to through traffic.

Norfolk Southern provides rail service along the Corridor.



Route 29 Corridor Background



Numerous Segments studied in the past and many recommendations are still valid

None of these studies focused on the entire corridor

Route 29 Corridor Background

Meeting 1/16/2008 With CTB Members, elected and Local Leaders

The most noted issues of concern were:

- safety
- congestion
- through travel/through-put
- local traffic – access control
- land use / transportation planning
- local economy depends on the corridor

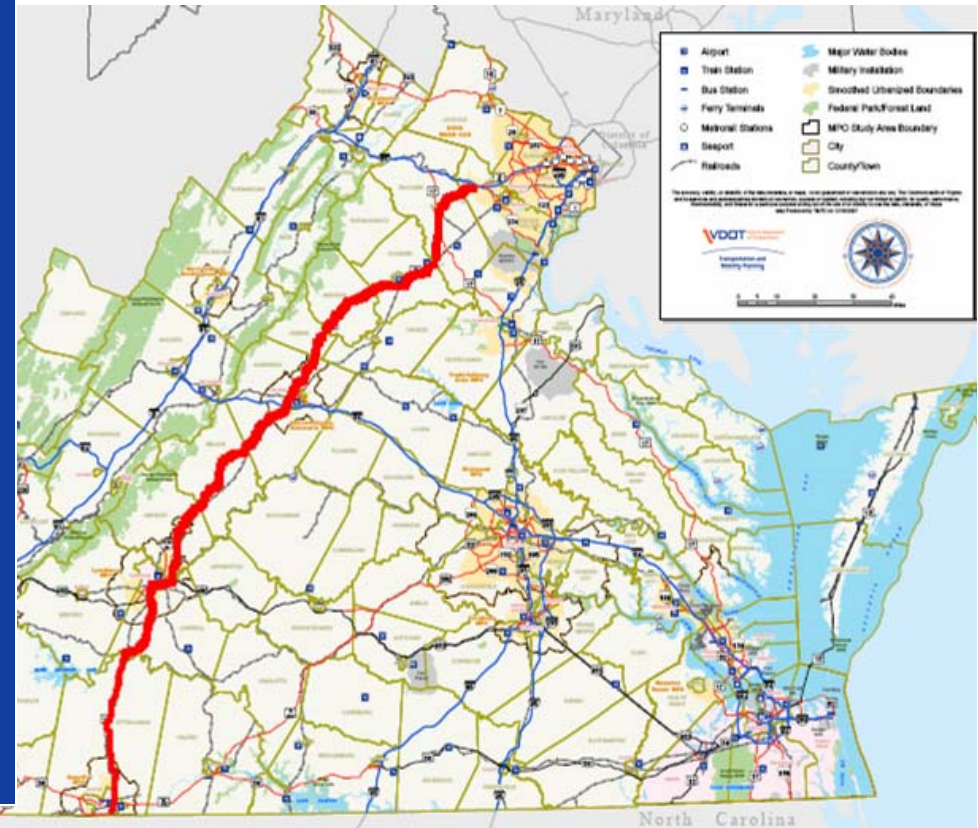


Route 29 Corridor Background

Meeting of 1/16/2008 Continued

There is a need to:

- Improve traffic operations (coordinate traffic signals)
- Consider other alternatives (Rail)
- Encourage broad public input to solutions
- Build local/regional consensus on critical issues
- Define overall corridor goals
- Recognize fiscal constraints
- Prioritize Recommendations



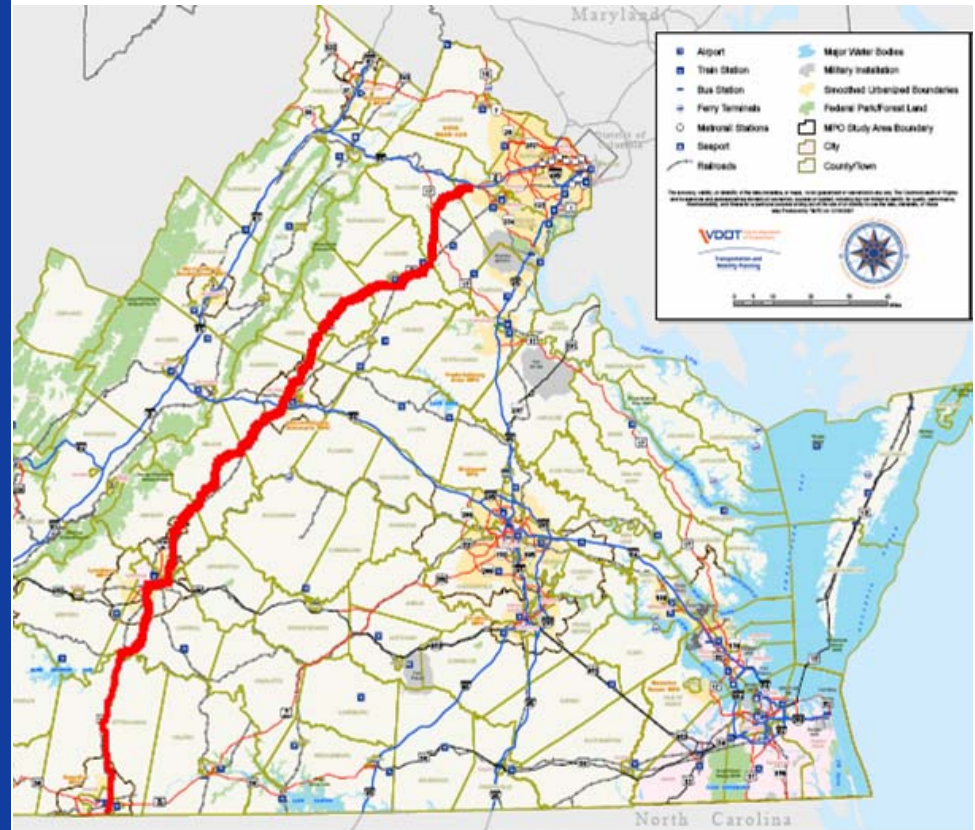
Route 29 Corridor Study Outline

Public Focus on:

- Why this transportation corridor is important
- How they use the corridor
- Goals for safe future transportation

Corridor Data collection:

- Travel information (traffic data, transit and rail passenger use and freight movements by rail and freight movements by rail and highway)
- Land uses – employment, cultural centers, universities, parklands



Route 29 Corridor Study Outline

Analysis of the collected information:

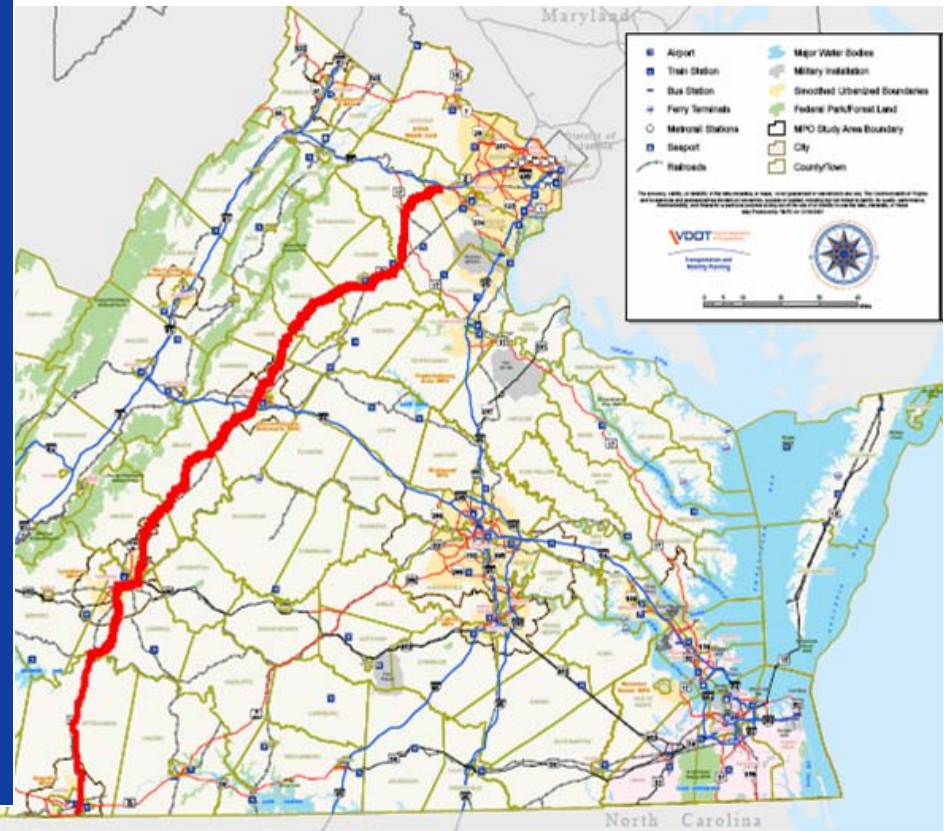
- Develop Corridor Performance Standards
- Current and past study recommendations
- Critical safety and congestion “Hot Spots”
- Role of Transit and other travel modes
- Freight movement needs
- Access Management



Route 29 Corridor Study Outline

Short Term – Immediate Action Plan

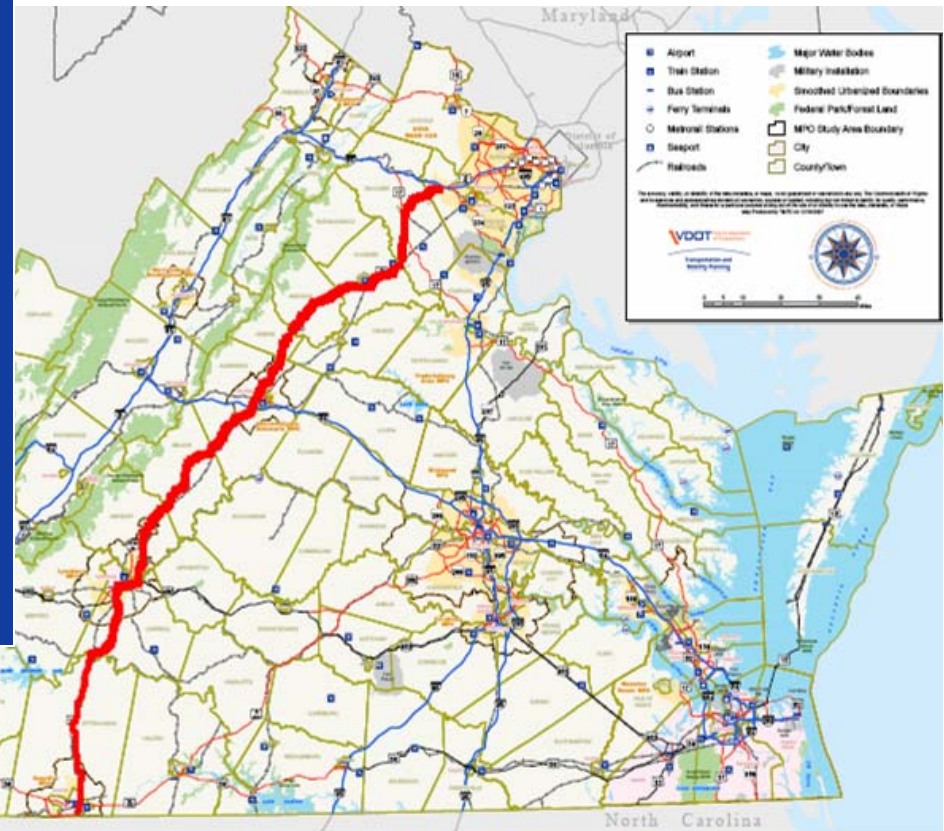
- Identify solutions for critical safety “Hot Spots”
- Identify commuter service enhancements
- Recommend Improvements for transit, rail or other passenger services
- Recommend improvements for freight movements
- Recommendations for congestion mitigation
- Develop Local Access Management Plans



Route 29 Corridor Study Outline

Interim Corridor Recommendations

- Enhancements to existing rail and regional transit
- Recommendations for Land Use Controls
- Develop a Corridor Access Management Plan
- Recommendations for Safety and Congestion Management
- Improved freight movements



Route 29 Corridor Study

The Blueprint

- A Multimodal Vision Plan for the entire Corridor
- Build on the Commonalities of citizen concerns along the Corridor
- Recommend a balanced transportation system including highway, transit, and rail modes
- Recommendations must be context sensitive and responsive to environmental concerns
- The study is to be completed by November 2009

