

# Virginia's Highway Safety Corridor Program

Commonwealth Transportation Board  
November 19<sup>th</sup>, 2003

Highway Safety Corridor Program



# Purpose

Reduce highway deaths and injuries

Highway Safety Corridor Program



# Background

- In 2002, 913 people died, 78,896 more were injured in highway crashes
- New VA Law helps State Police, VDOT, & DMV address safety in high crash locations
  - Increased fines-in most cases doubled

Highway Safety Corridor Program



# First Steps

- Hold public hearings on selection criteria
- Match selected criteria to “crash prone” locations
- Hold public hearings on proposed designated crash prone zones
  - Interstates addressed first-2003-2004
  - Primaries addressed next-2005-2006
- Hold regional focus groups for “best message” to change driving behavior

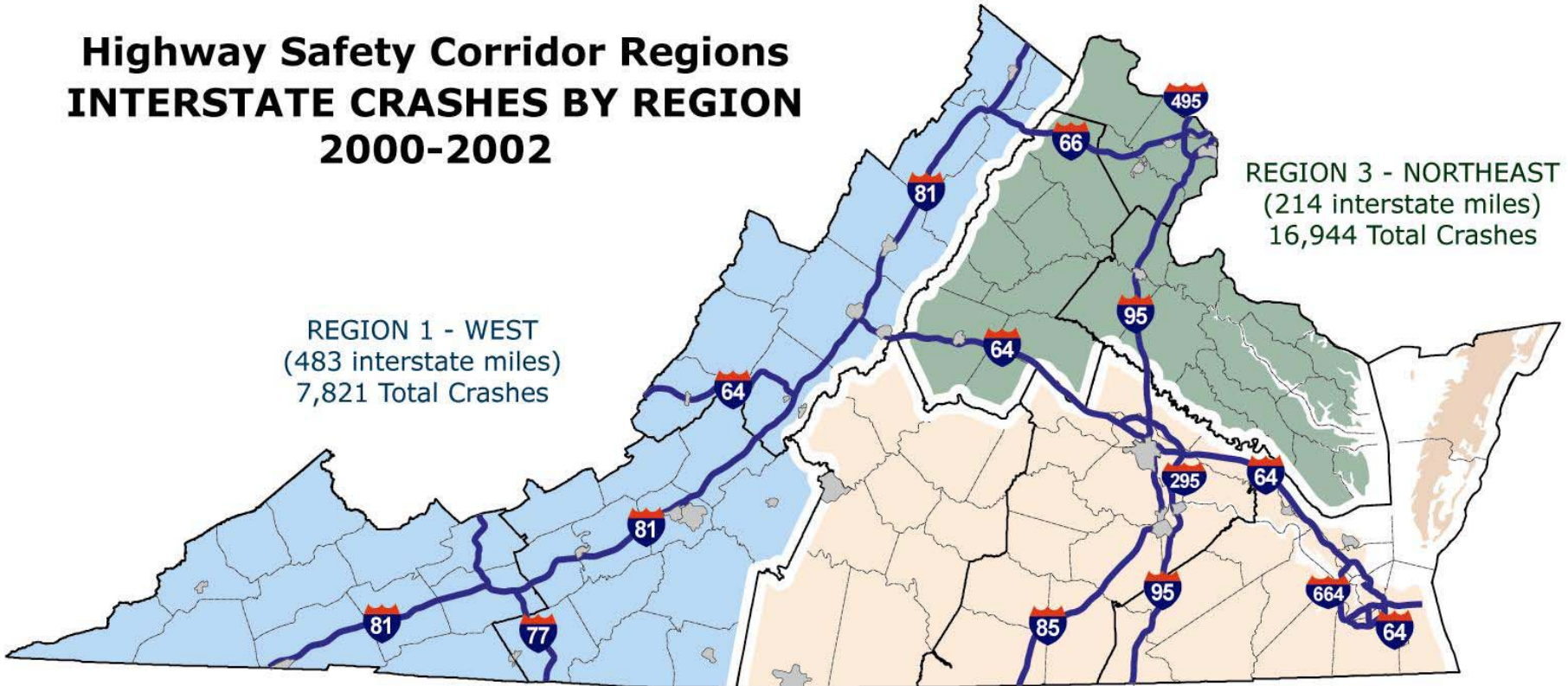
# Highway Safety Corridor Regions

## INTERSTATE CRASHES BY REGION

### 2000-2002

REGION 1 - WEST  
(483 interstate miles)  
7,821 Total Crashes

REGION 3 - NORTHEAST  
(214 interstate miles)  
16,944 Total Crashes



A 'Crash' is a reported accident with \$1,000 or more of damage.

REGION 2 - SOUTHEAST  
(432 interstate miles)  
21,714 Total Crashes

Highway Safety Corridor Program



# Criteria Designated by Law

- Review of crash data
- Accident reports
- Type and volume of traffic
- Engineering and traffic studies

Highway Safety Corridor Program



# I-81 Crash Frequency

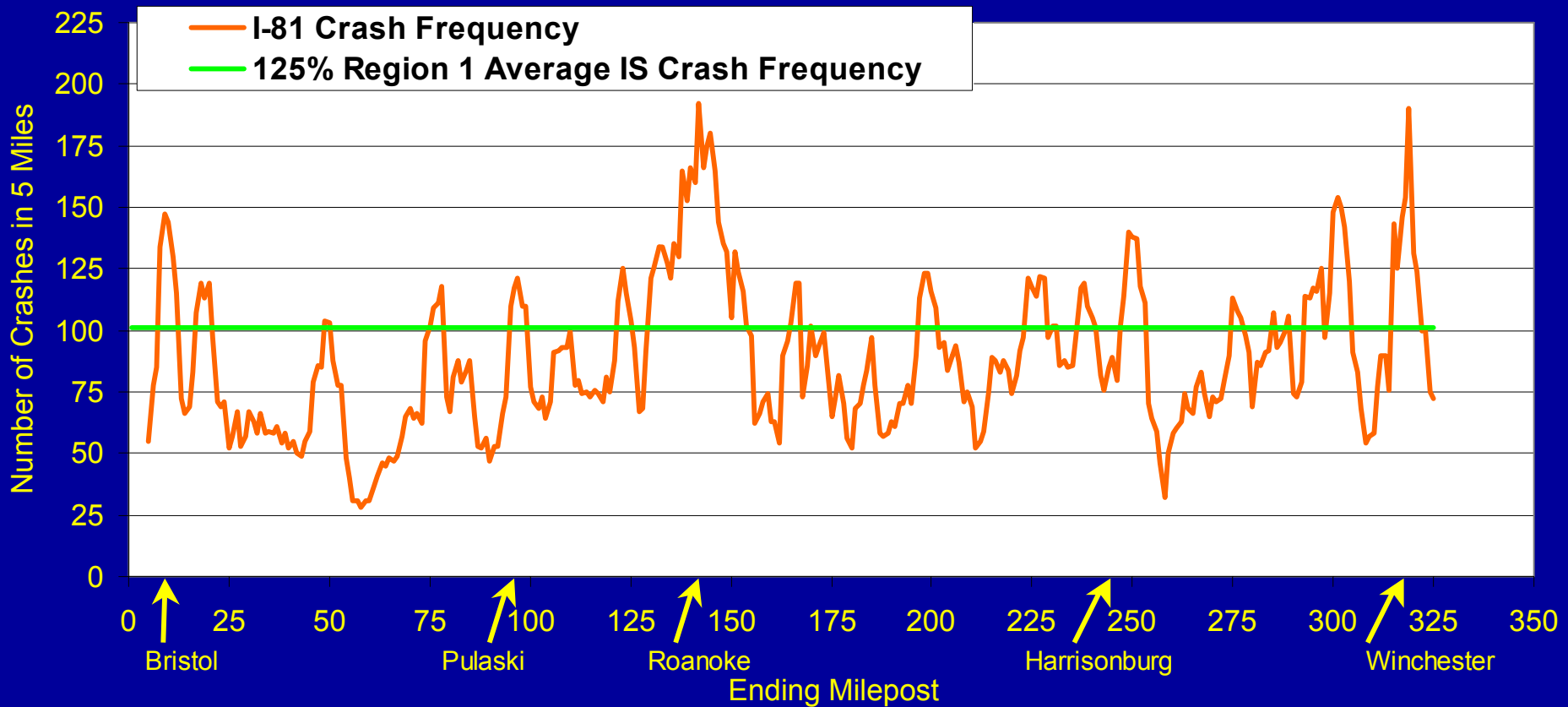
- # Crashes along I-81 by mile-point
- Tennessee state line at left
- West Virginia state line at right
- Look at height and width of peaks
- Where above 125% of regional average

Highway Safety Corridor Program



# I-81 Crash Frequency

(2000-2002 Crashes)



Highway Safety Corridor Program



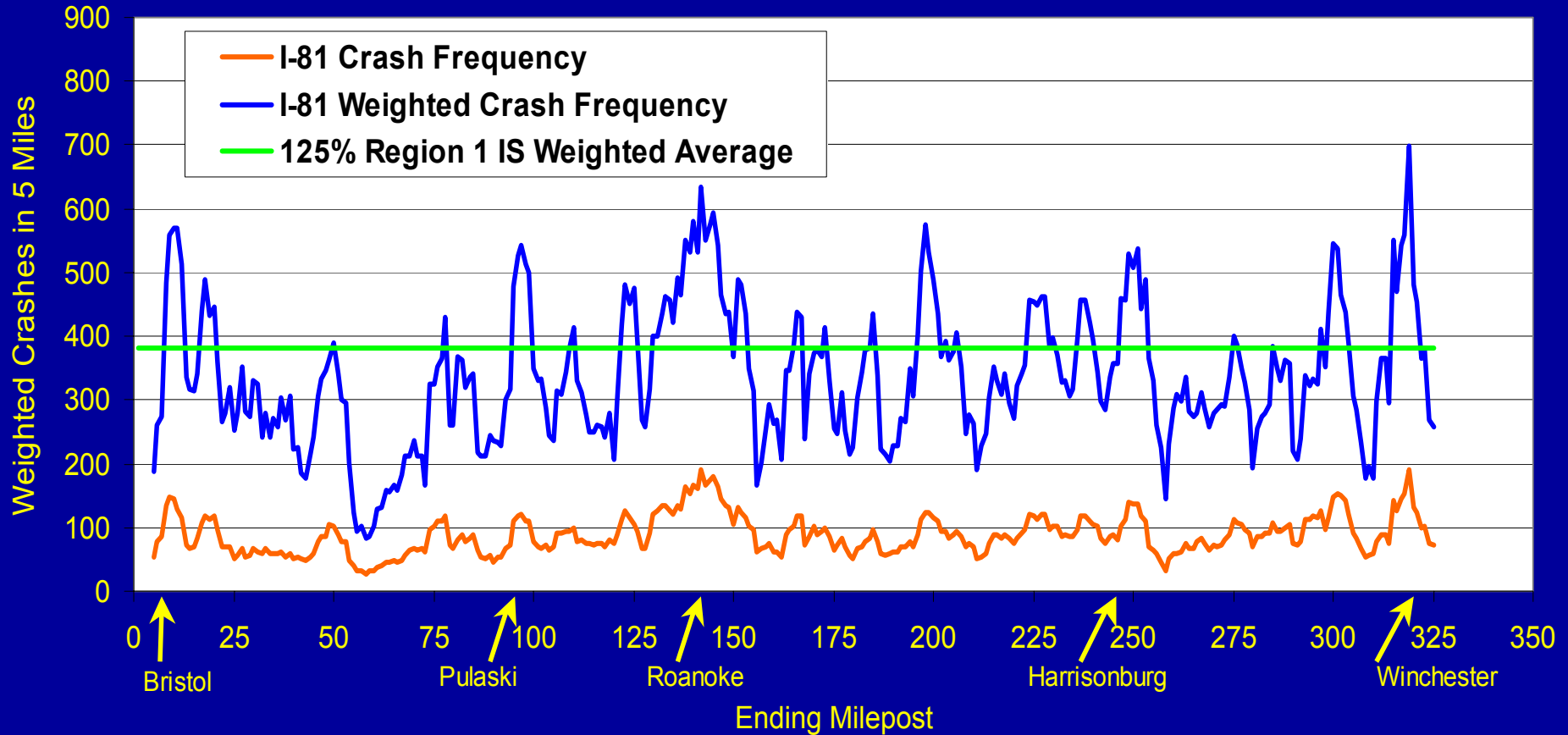


# I-81 Crash Frequency Weighted by Severity

- Previous slide – total # crashes
- Also need to consider severity of crash
- Give added emphasis to injury and fatal crashes
- Look at peaks where above 125% of regional average

# I-81 Crash Frequency Weighted by Severity

(2000-2002 Crashes, PDO=1, Injury=8, Fatal = 20)



Highway Safety Corridor Program



# I-81 Vehicle Mix

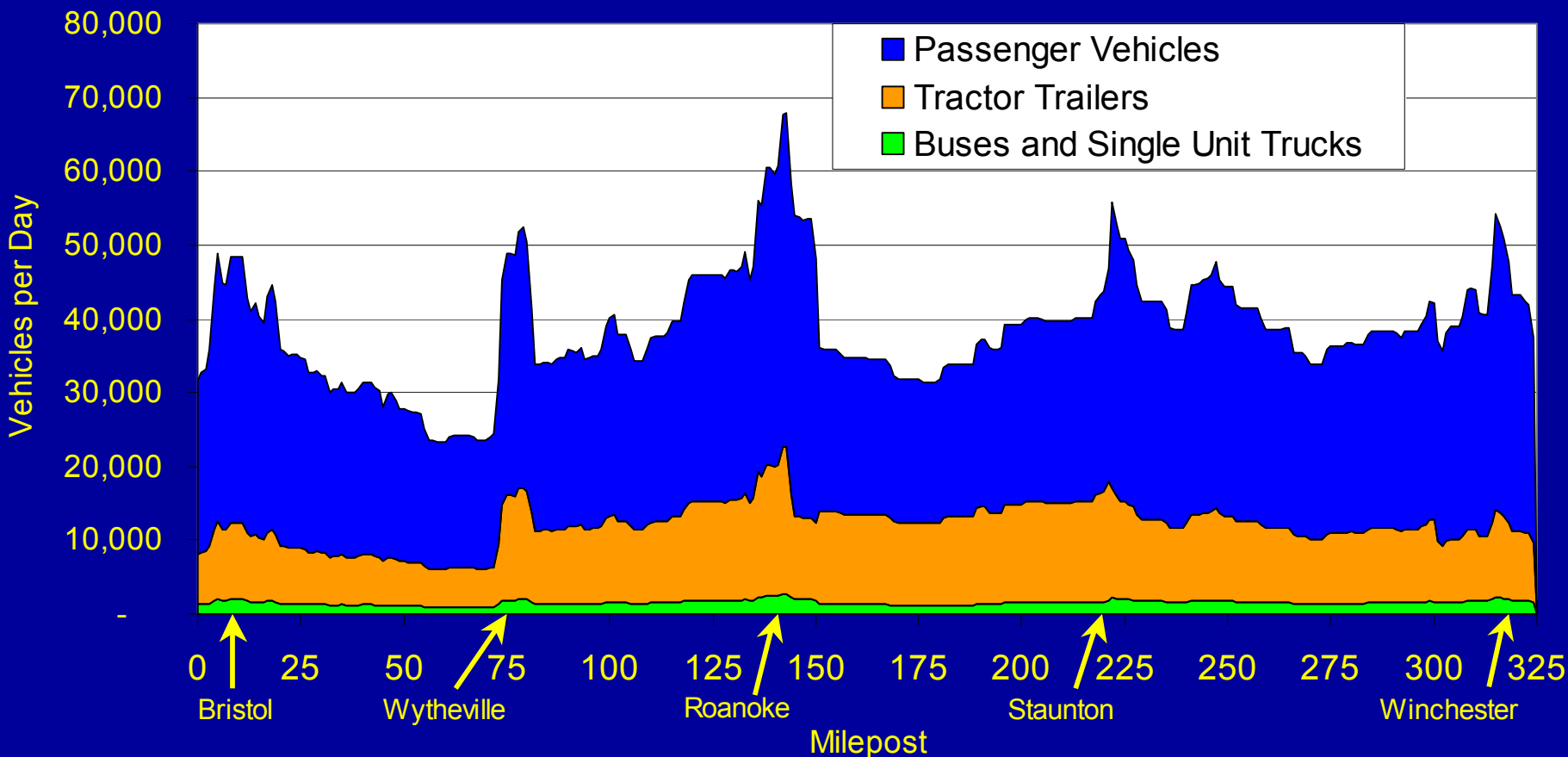
- Tractor-trailers
- Other trucks and buses
- Passenger vehicles

Highway Safety Corridor Program



# I-81 Vehicle Mix

I-81 Average Daily Traffic by Vehicle Type (2000-2002)



Highway Safety Corridor Program

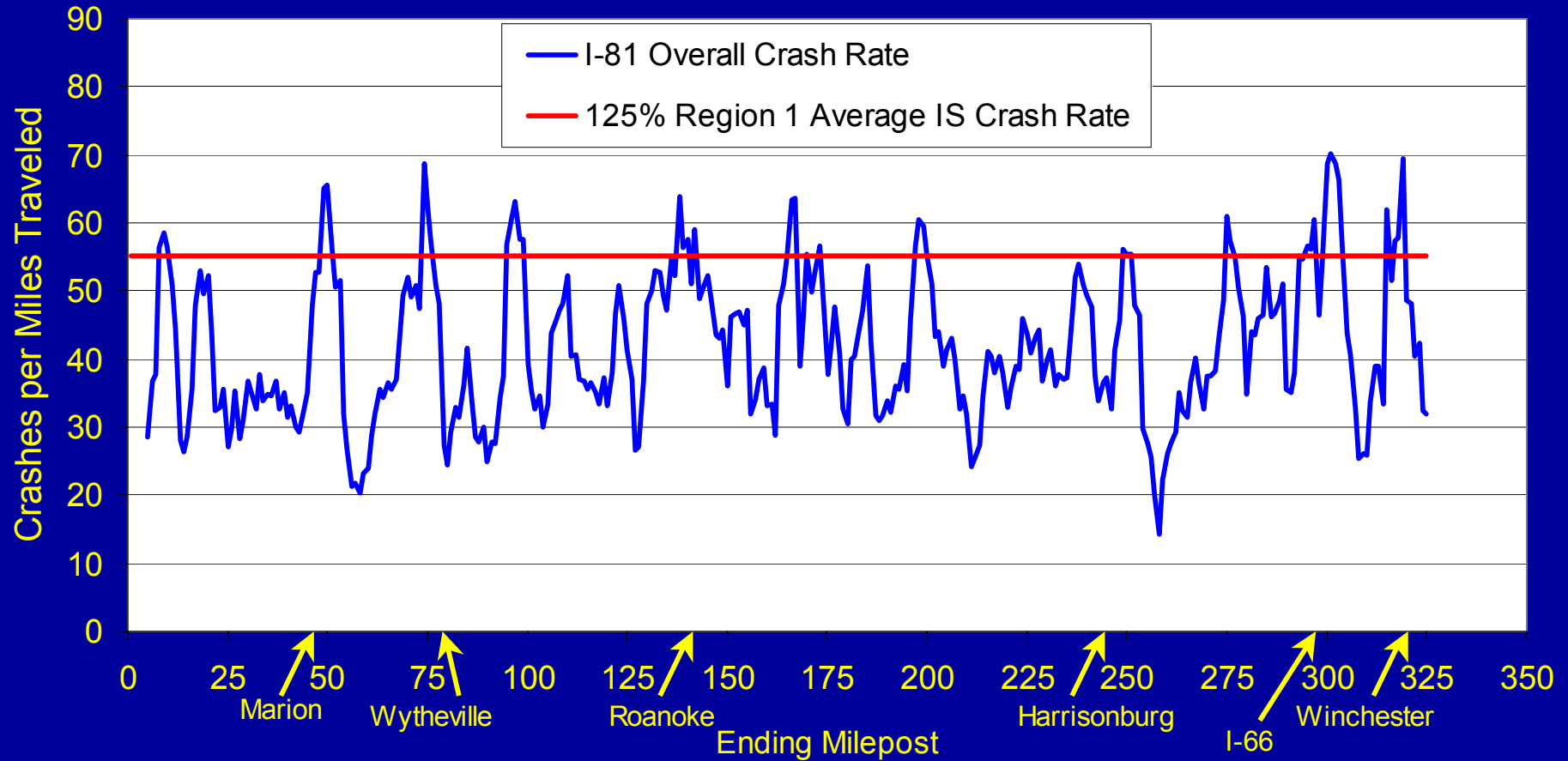


# I-81 Crash Rates

- Adjust # crashes for # vehicles on road
- Compare high crash / high volume locations with lower crash / lower volume locations on more even basis

# I-81 Crash Rates

(2000-2002 Crashes)



Highway Safety Corridor Program

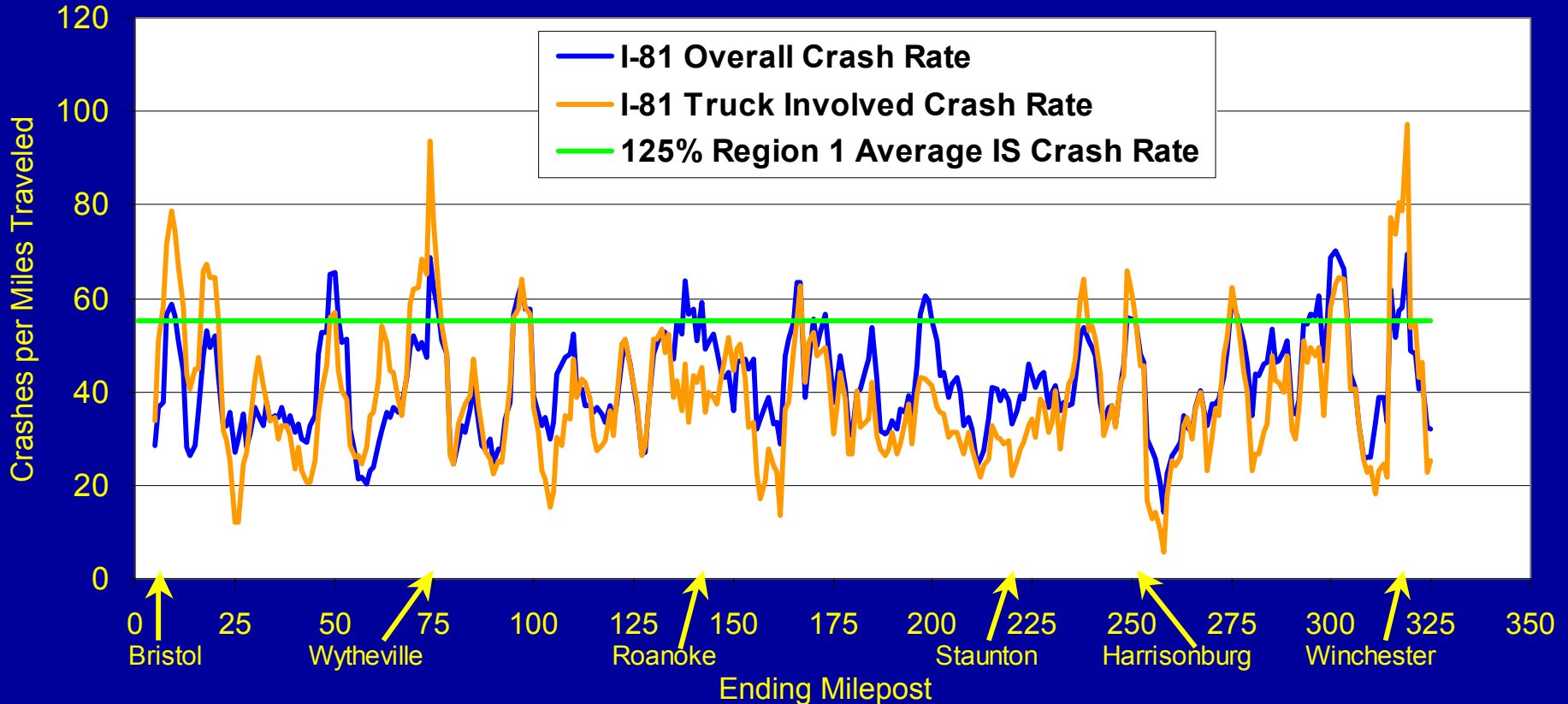


# Comparing Rates for Traffic Mix

- Overall crash rate versus truck-involved crash rate
- NOTE: Truck involved crash does not mean truck caused crash

# Comparing Rates for Traffic Mix

I-81 Crash Rate Comparison:  
All Traffic and Truck Involved (2000-2002 Crashes)



Highway Safety Corridor Program








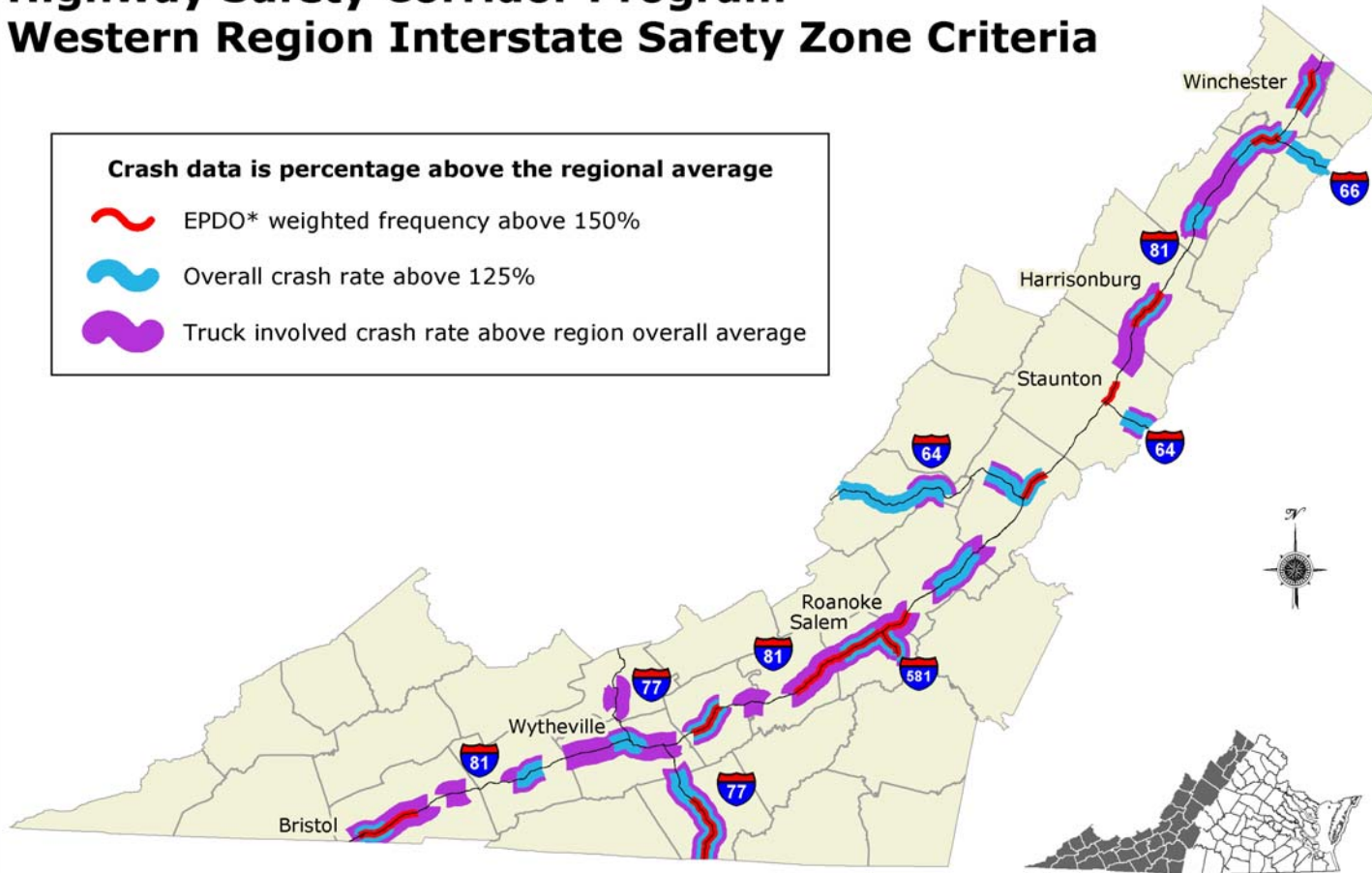
# Proposed Safety Criteria

- Crash frequency
- Overall vehicle crash rate
- Truck involved crash rate
- Enforcement capability

# Highway Safety Corridor Program Western Region Interstate Safety Zone Criteria

**Crash data is percentage above the regional average**

-  EPDO\* weighted frequency above 150%
-  Overall crash rate above 125%
-  Truck involved crash rate above region overall average



EPDO\* is equivalent property damage only crashes (PDO = 1, injury = 8, fatal = 20)

VDOT - Cartography Section - 10/03 - #32

Highway Safety Corridor Program



# Next Steps

- **Jan. - Dec. 2004**
  - Designate regional interstate zones
  - Hold public hearings for additional interstate zones
  - Launch public awareness campaign
- **Jan. - Dec. 2005**
  - Analyze potential primary highway zones
  - Monitor, evaluate & report annually

# Virginia's Highway Safety Corridor Program

Working Together To Make A Difference

Highway Safety Corridor Program

