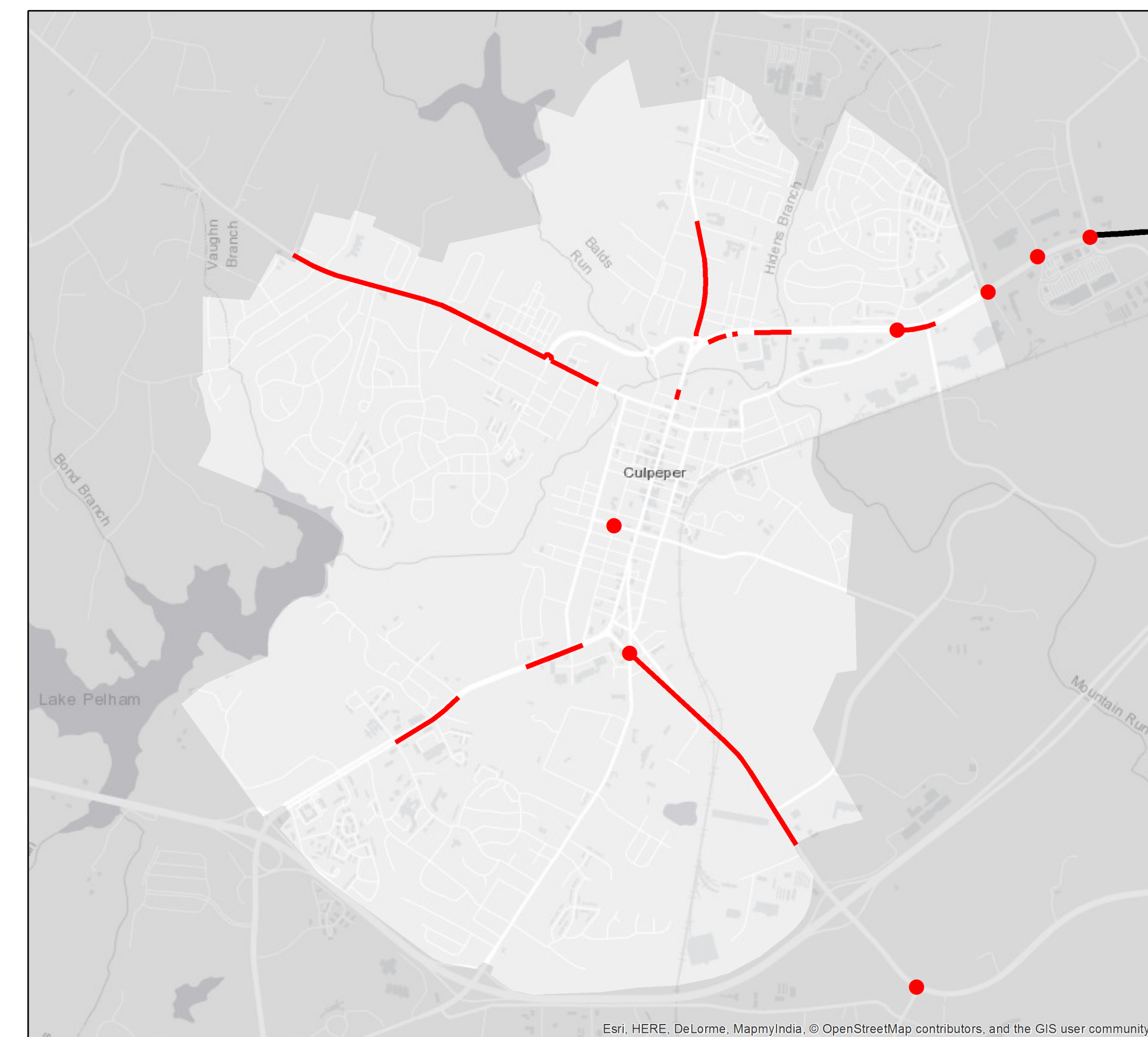
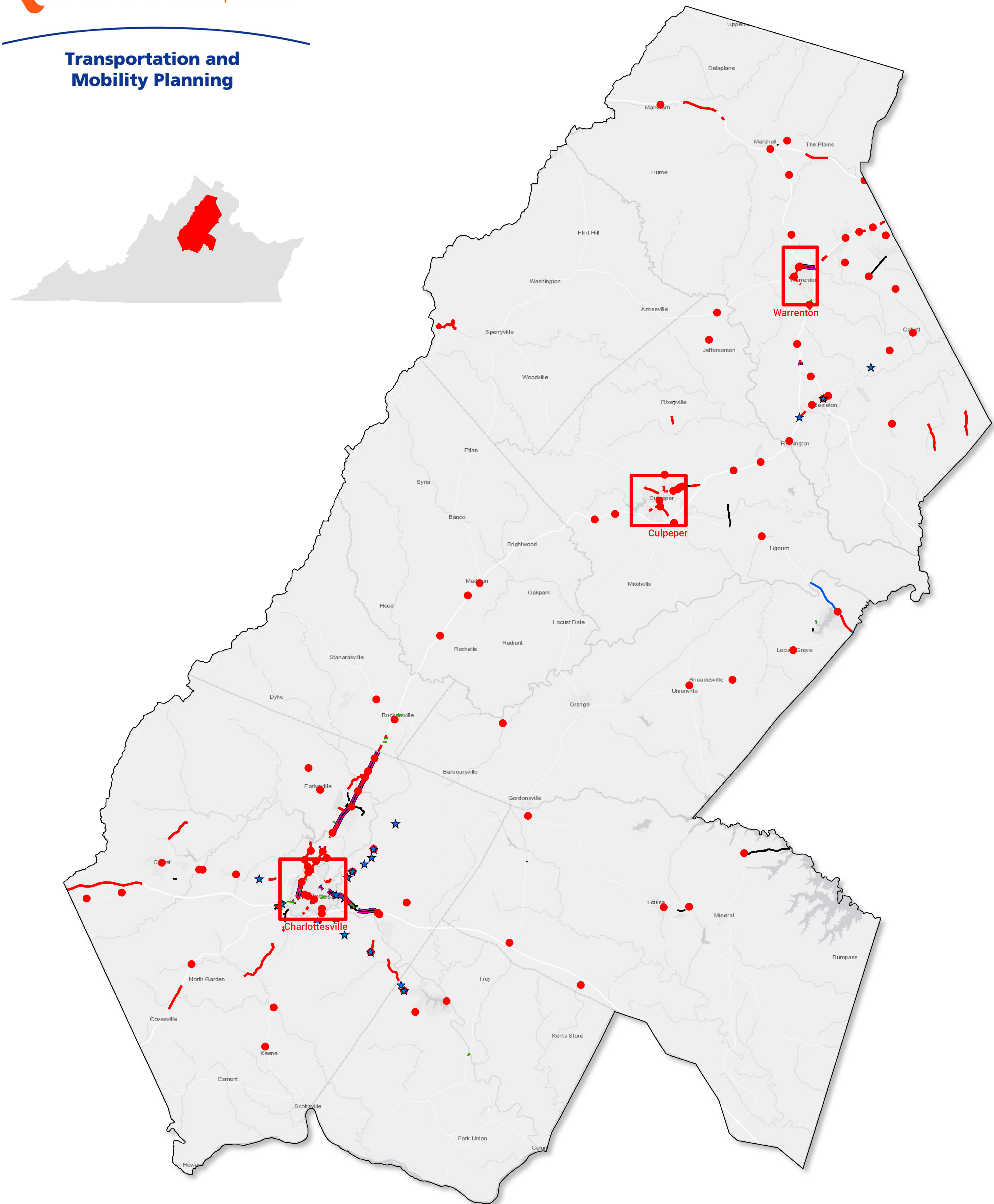
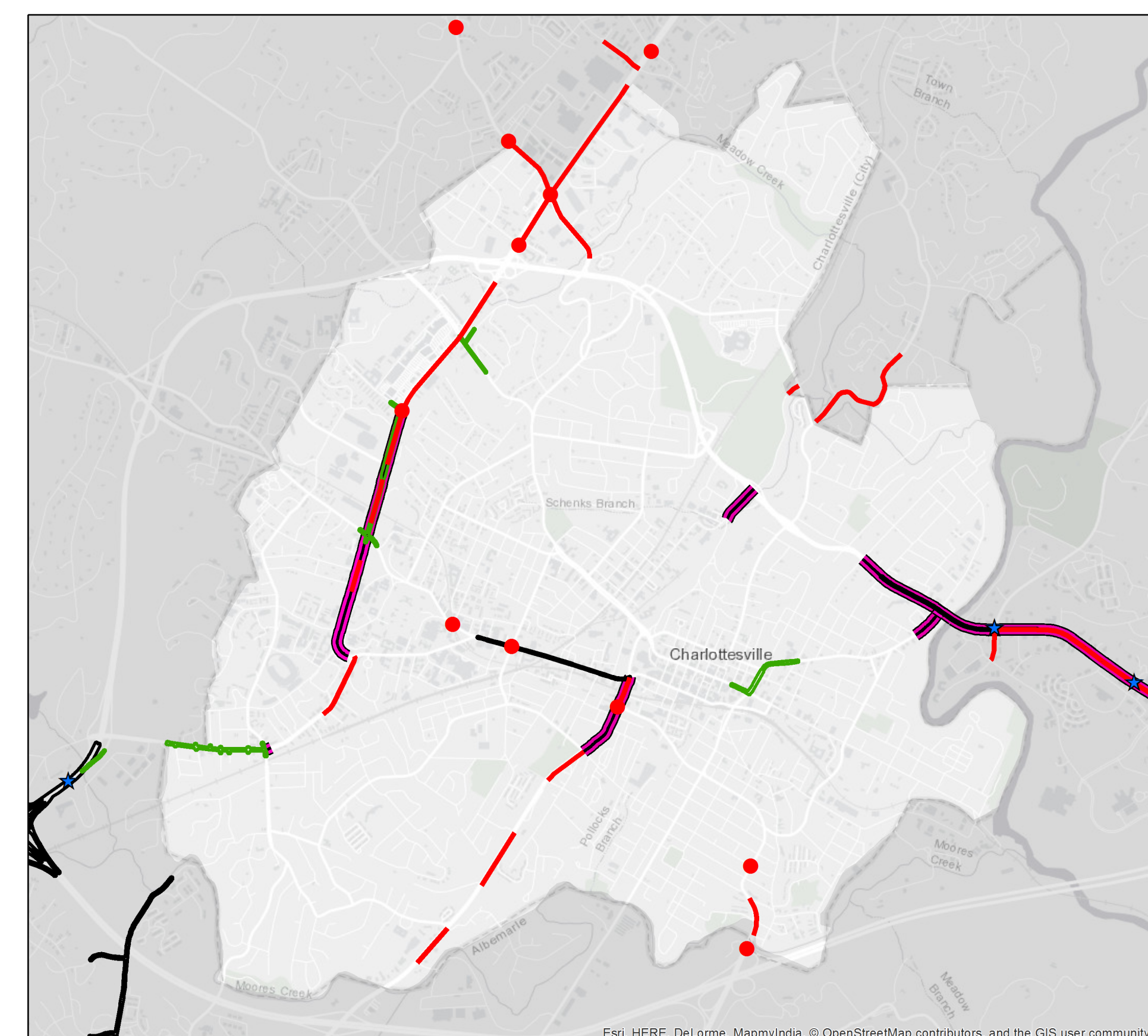


Performance Measure Map

Culpeper District



Culpeper



Charlottesville

Legend

VDOT Projects

- ★ STARS Studies
- Smart Scale (Funded) - FY17 and FY18
- Smart Scale (Not Funded) - FY17 and FY18
- Arterial Preservation Plans

Crashes (Top 100 PSI)

PSI: Potential for Safety Improvement

- Intersections

- Segments

Congestion

- V/C Ratio > 1 or TTI >= 2

V/C: Volume/Capacity

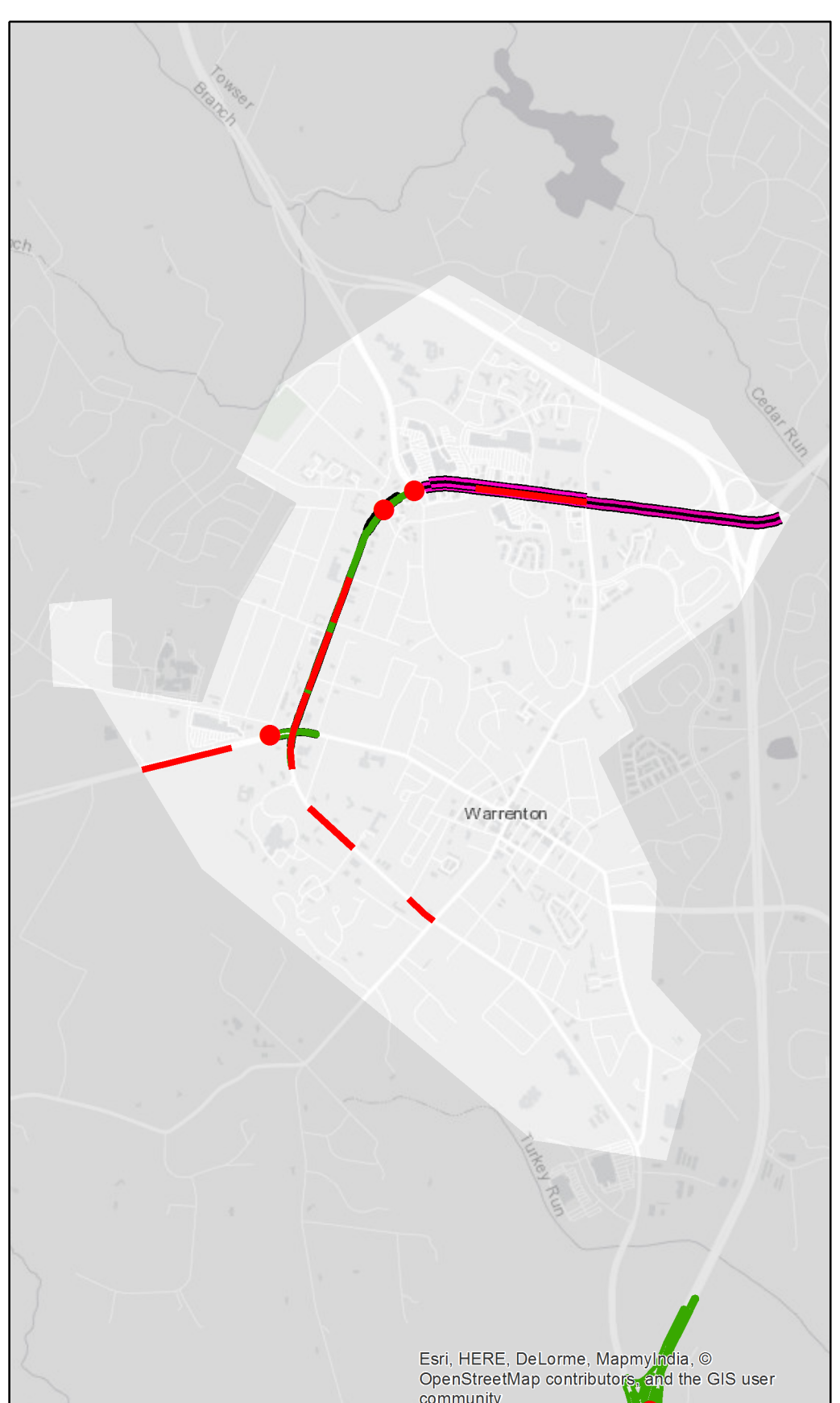
TTI: Travel Time Index

This map uses data from 2017

The safety and congestion performance measures shown are an example of informational services that VDOT can offer localities to assist in the development of local transportation plans as well as applications for SMART SCALE and other competitive transportation funding programs. Correlating applications with identified safety and congestion issues is the first step in developing a successful application.

VDOT can also help with next step - the development of targeted solutions - through programs such as Strategically Targeted Affordable Roadway Solutions (STARS) <http://www.virginiadot.org/projects/stars.asp> or the Arterial Preservation Program http://www.virginiadot.org/programs/vdot_arterial_preservation_program.asp.

For more detailed maps, visit <https://vdot.maps.arcgis.com>



Warrenton