

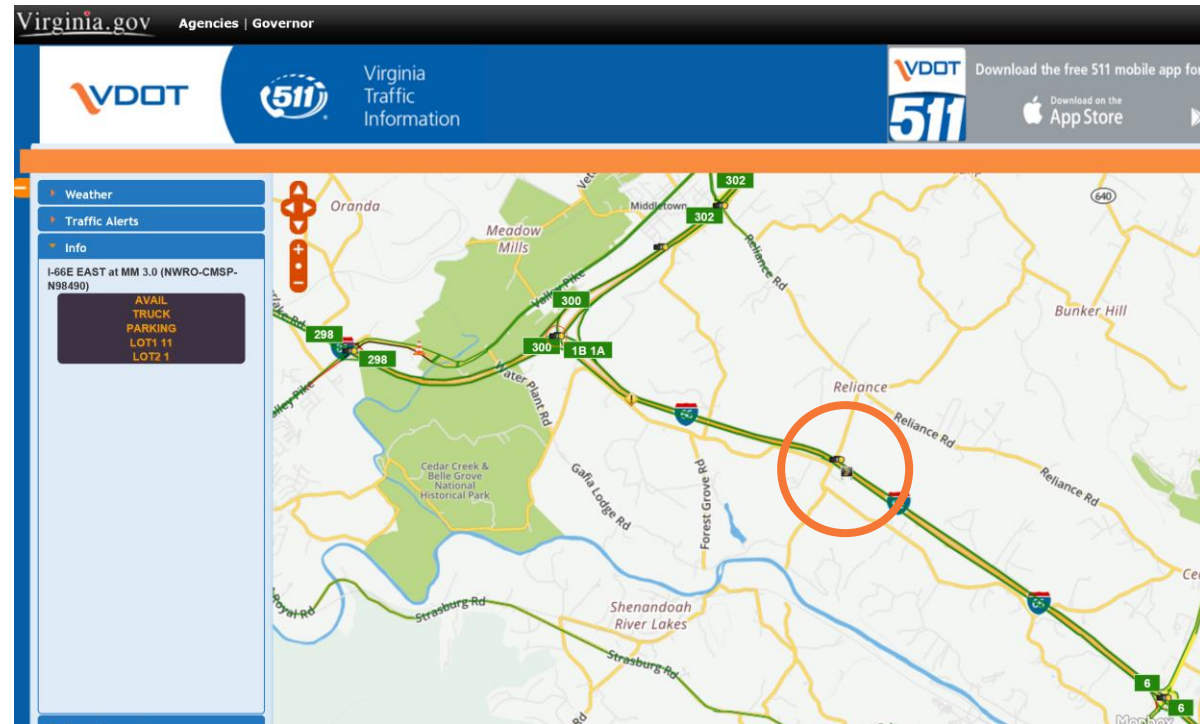


CTB Innovation and Technology Subcommittee
December 6, 2017

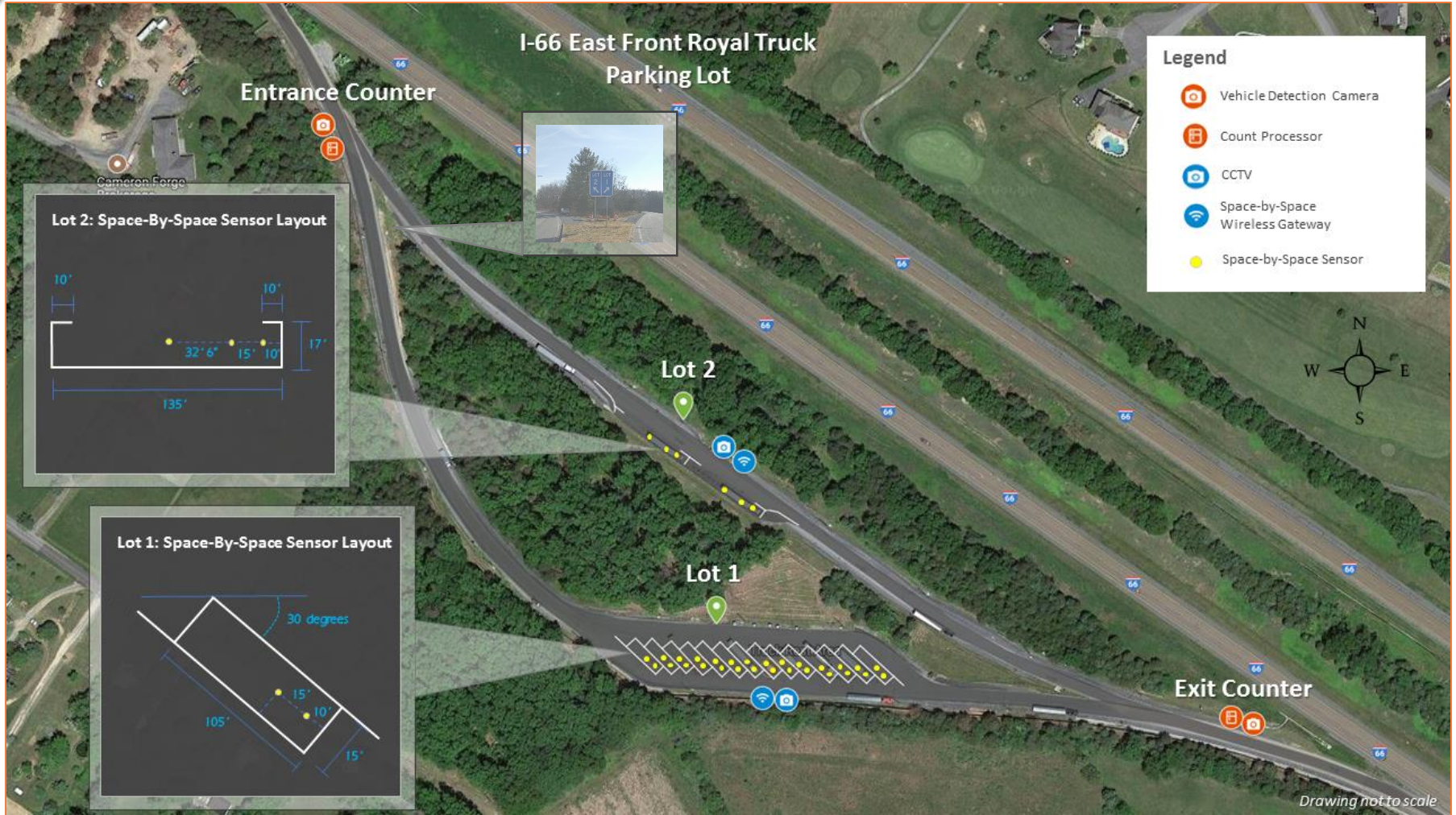
I-66 Early Deployment Truck Parking Management System

Project Overview

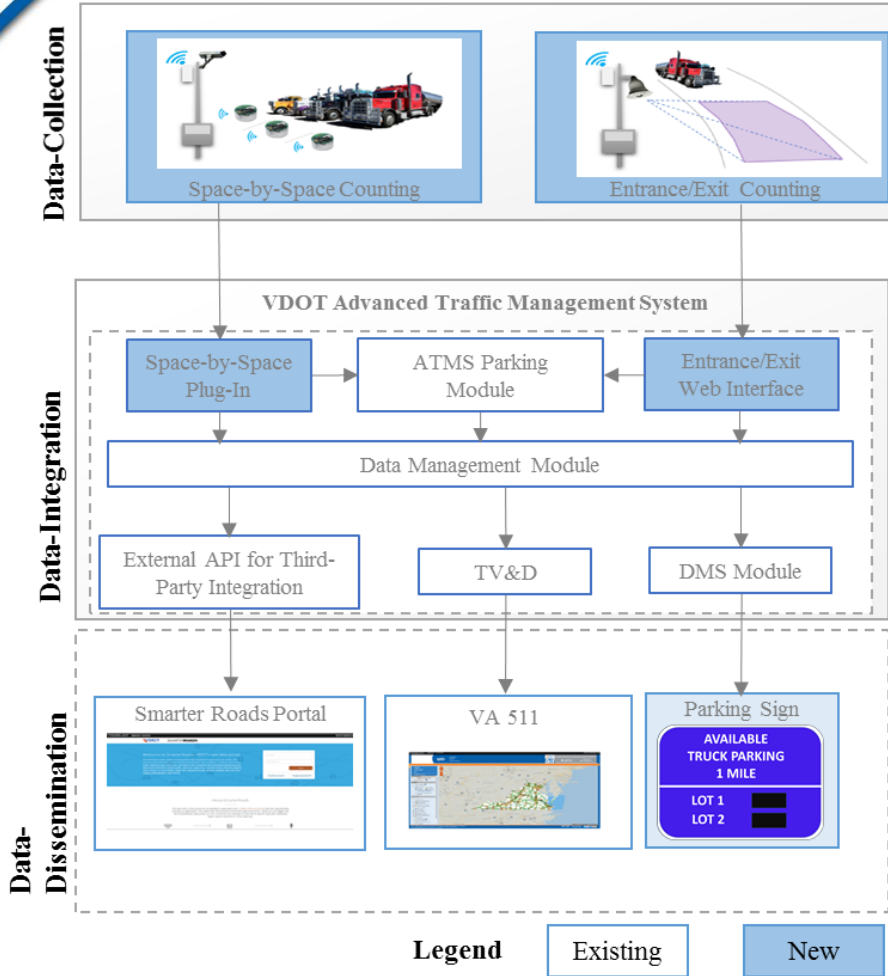
- Early Deployment System
- Front Royal Truck-Only Rest Area
 - I-66 Eastbound – Milemarker 5
 - Near I-81 interchange
 - 2 sub-lots:
 - Lot 1 (14 spaces)
 - Lot 2 (2 spaces)
- Testing 2 Approaches:
 - Space-by-Space Sensors
 - Entry/Exit Counting
- Cellular (Wireless) Communications



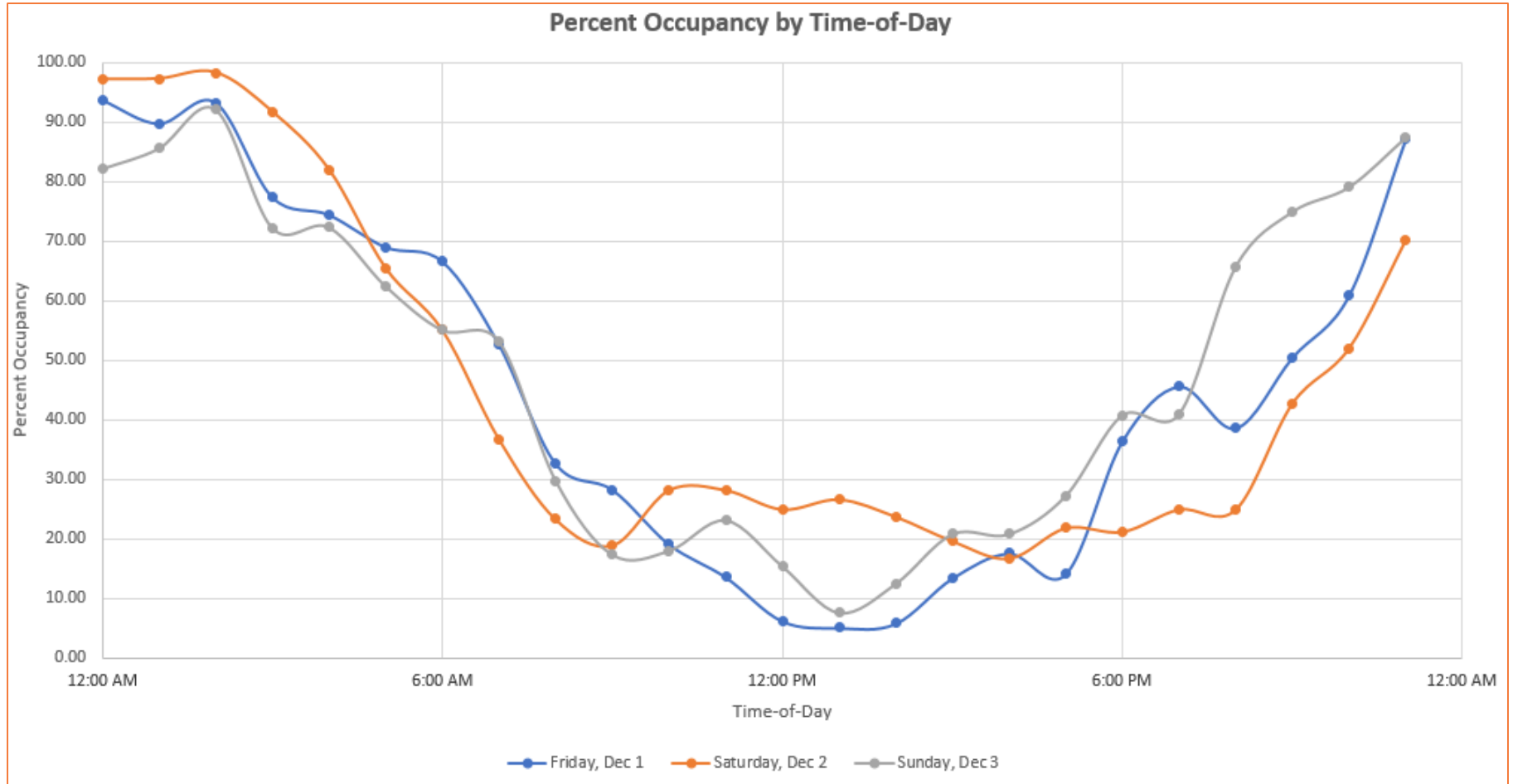
Site Plan



System Concept



Preliminary Observations



Truck Parking Demonstration

Virginia.gov Agencies | Governor

VDOT Virginia Traffic Information

Download the free 511 mobile app for
Download on the App Store

- Weather
- Traffic Alerts
- Info

I-66E EAST at MM 3.0 (NWRO-CMSP-N98490)

AVAIL TRUCK PARKING LOT1 11 LOT2 1

The map displays a section of Interstate 66E in Virginia. A green line highlights the highway, with several green markers indicating truck parking locations. The markers are labeled with route numbers: 298, 300, 1B 1A, and 302. The map also shows local roads such as Reliance Rd, Forest Grove Rd, and Strasburg Rd. Landmarks like Cedar Creek & Belle Grove National Historical Park and Meadow Mills are visible. A sidebar on the left contains navigation and information options, including a weather icon, a traffic alert icon, and an info icon. The info section is expanded to show a specific alert for I-66E EAST at MM 3.0, indicating available truck parking in Lot 1 (11 spaces) and Lot 2 (1 space).