



Jolly Pond Dam

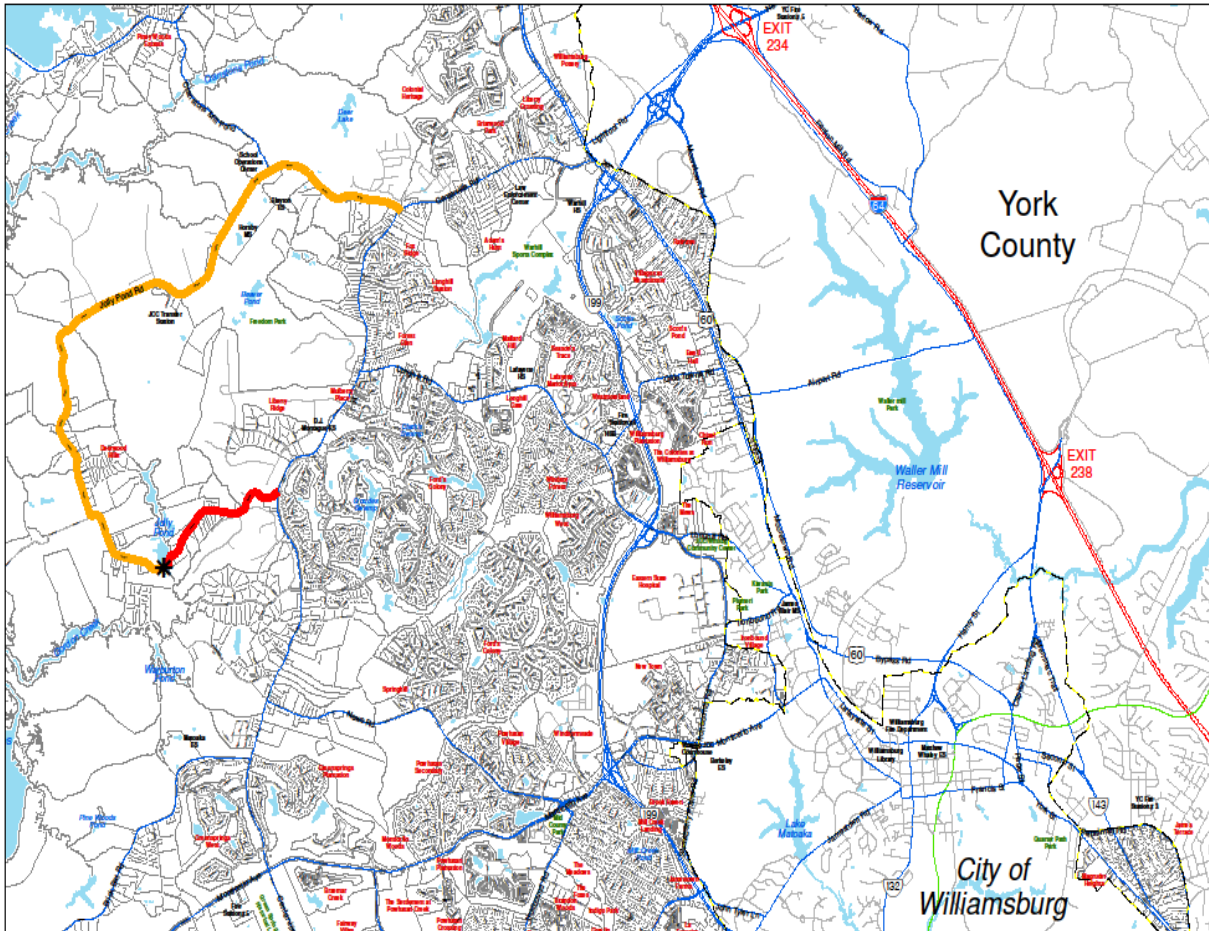
March 14, 2012

James City County

Jolly Pond Road

1 inch = 4,000 feet

- Legend**
- Jolly Pond Road**
- 5.9 miles
 - 1.3 miles
 - * Dam Location



This drawing is neither a legally recorded map nor a survey and is not intended to be used as such. The information displayed is a compilation of records, information, and data obtained from various sources, and James City County is not responsible for its accuracy or how current it may be. If discrepancies are found, please contact the Office of Real Estate Assessments of James City County, Mapping/GIS Section. Copyright James City County, Virginia - March 2012

Jolly Pond Dam History



- Oct 2006 – Tropical Storm Ernesto damage; resulting in closure
- July 2007 – JCC and Dam owner entered into a lease agreement to make repairs; Dam Breach Analysis and Hazard Classification Study performed by Timmons Group
- Oct. 2008 – Timmons Group prepared alternative analysis to obtain compliance with DCR to maintain vehicular traffic
- Feb. 2009 – VDOT barricaded due to denial by DCR
- Aug. 2011 – site visit performed by Timmons Group and JCC engineer; report issued on findings stated that overall condition had little change since observations in 2007 and 2008
- Oct. 2011 – Board of Supervisors adopted resolution petitioning VDOT for discontinuance
- March 2012 – VDOT hearing



JCC Actions Post Acceptance

- Implementation of Weight Restrictions

- Implementation of Monitoring program
 - Normal Weather Conditions
 - Inclement Weather Conditions

- Repair any Leakage/Seepage which deteriorates Structure