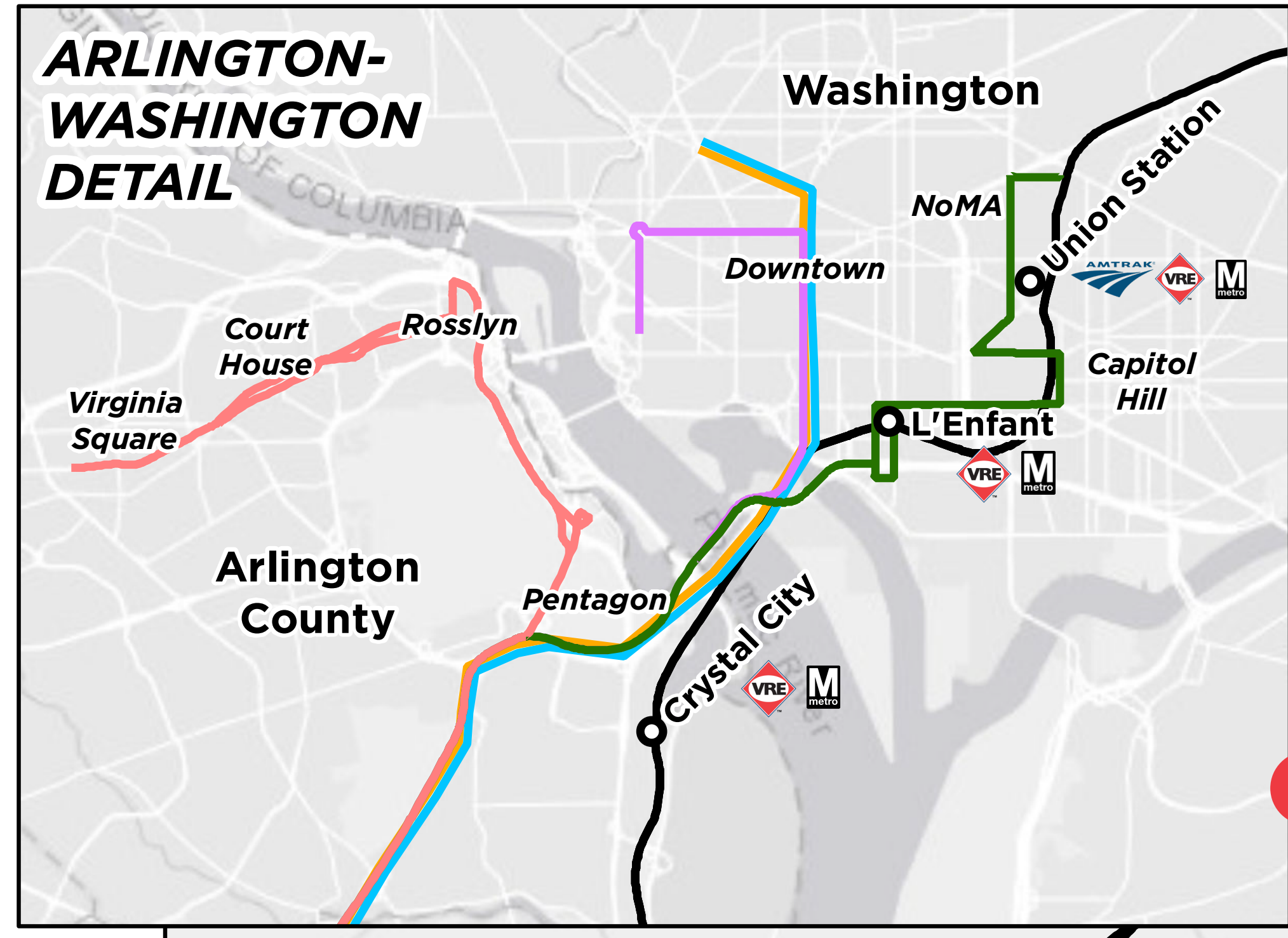
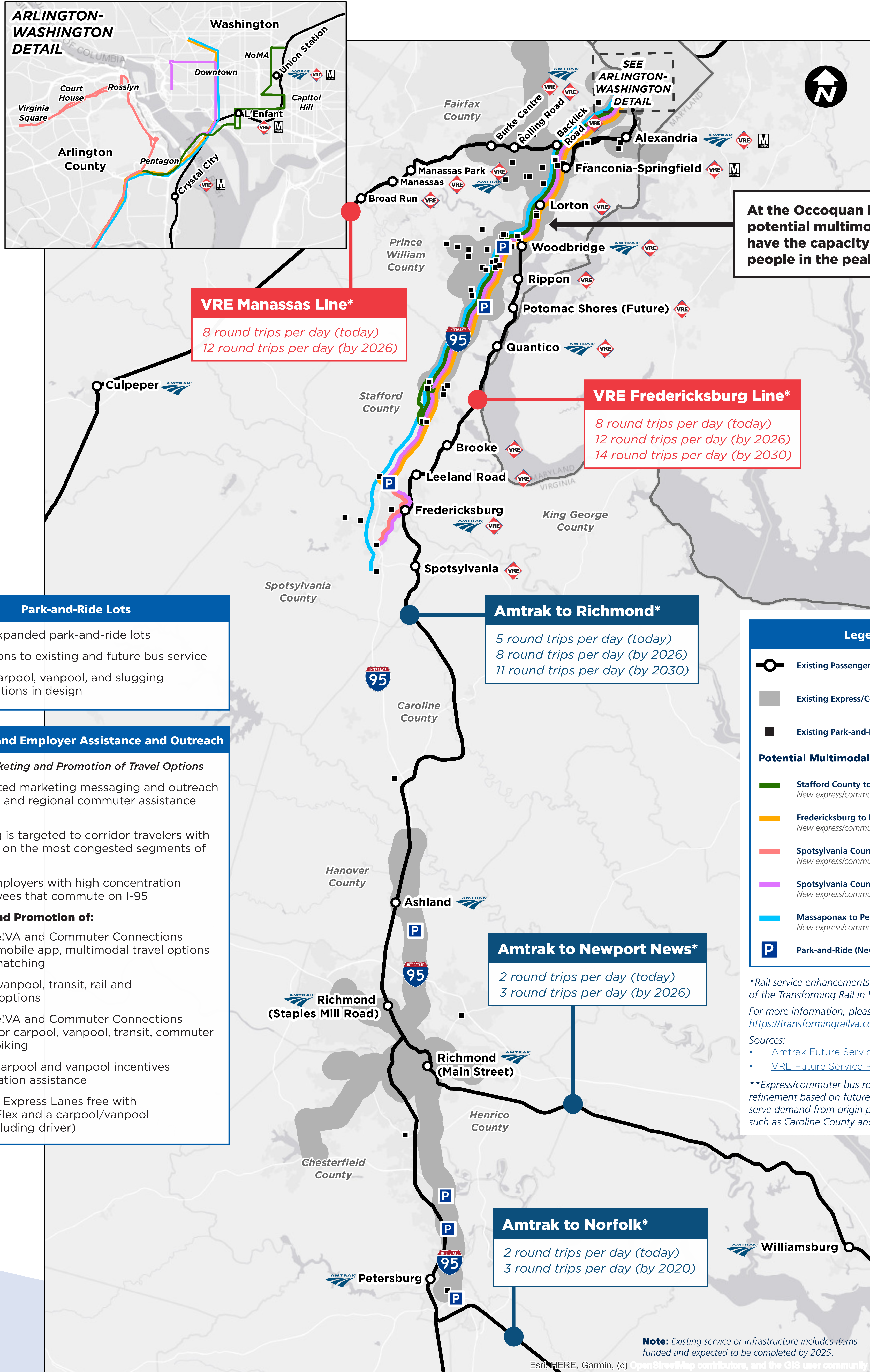




I-95 Corridor Improvement Plan

Potential Multimodal Improvements



At the Occoquan River, the potential multimodal improvements have the capacity to move more people in the peak period

VRE Manassas Line*
 8 round trips per day (today)
 12 round trips per day (by 2026)

VRE Fredericksburg Line*
 8 round trips per day (today)
 12 round trips per day (by 2026)
 14 round trips per day (by 2030)

Amtrak to Richmond*
 5 round trips per day (today)
 8 round trips per day (by 2026)
 11 round trips per day (by 2030)

Amtrak to Newport News*
 2 round trips per day (today)
 3 round trips per day (by 2026)

Amtrak to Norfolk*
 2 round trips per day (today)
 3 round trips per day (by 2020)

- Park-and-Ride Lots**
- New or expanded park-and-ride lots
 - Connections to existing and future bus service
 - Include carpool, vanpool, and slugging considerations in design

- Commuter and Employer Assistance and Outreach**
- Strategic Marketing and Promotion of Travel Options*
- Coordinated marketing messaging and outreach with local and regional commuter assistance programs
 - Marketing is targeted to corridor travelers with emphasis on the most congested segments of I-95
 - Target employers with high concentration of employees that commute on I-95
- Marketing and Promotion of:**
- Commute!VA and Commuter Connections website, mobile app, multimodal travel options and ridematching
 - Carpool, vanpool, transit, rail and telework options
 - Commute!VA and Commuter Connections rewards for carpool, vanpool, transit, commuter rail, and biking
 - Existing carpool and vanpool incentives and formation assistance
 - Using the Express Lanes free with EZ-Pass Flex and a carpool/vanpool of 3+ (including driver)

Legend

- Existing Passenger Rail & Station
- Existing Express/Commuter Bus Coverage
- Existing Park-and-Ride

Potential Multimodal Improvements**

- Stafford County to Washington DC
New express/commuter bus route
- Fredericksburg to Pentagon/Washington DC
New express/commuter bus route
- Spotsylvania County to Rosslyn
New express/commuter bus route
- Spotsylvania County to Washington DC
New express/commuter bus route
- Massaponax to Pentagon/Washington DC
New express/commuter bus route
- Park-and-Ride (New or Expanded)

*Rail service enhancements to be funded as part of the Transforming Rail in Virginia program.
 For more information, please visit the website: <https://transformingrailva.com/>
 Sources:
 • Amtrak Future Service Plan
 • VRE Future Service Plan
 **Express/commuter bus routes subject to further refinement based on future planning. Routes would serve demand from origin points and nearby areas such as Caroline County and King George County.

Note: Existing service or infrastructure includes items funded and expected to be completed by 2025.

Esri, HERE, Garmin, (c) OpenStreetMap contributors, and the GIS user community