

Virginia's Highway Safety Corridor Program

Commonwealth Transportation Board
November 19th, 2003

Highway Safety Corridor Program



Purpose

Reduce highway deaths and injuries

Highway Safety Corridor Program



Background

- In 2002, 913 people died, 78,896 more were injured in highway crashes
- New VA Law helps State Police, VDOT, & DMV address safety in high crash locations
 - Increased fines-in most cases doubled

Highway Safety Corridor Program



First Steps

- Hold public hearings on selection criteria
- Match selected criteria to “crash prone” locations
- Hold public hearings on proposed designated crash prone zones
 - Interstates addressed first-2003-2004
 - Primaries addressed next-2005-2006
- Hold regional focus groups for “best message” to change driving behavior

Highway Safety Corridor Regions

INTERSTATE CRASHES BY REGION

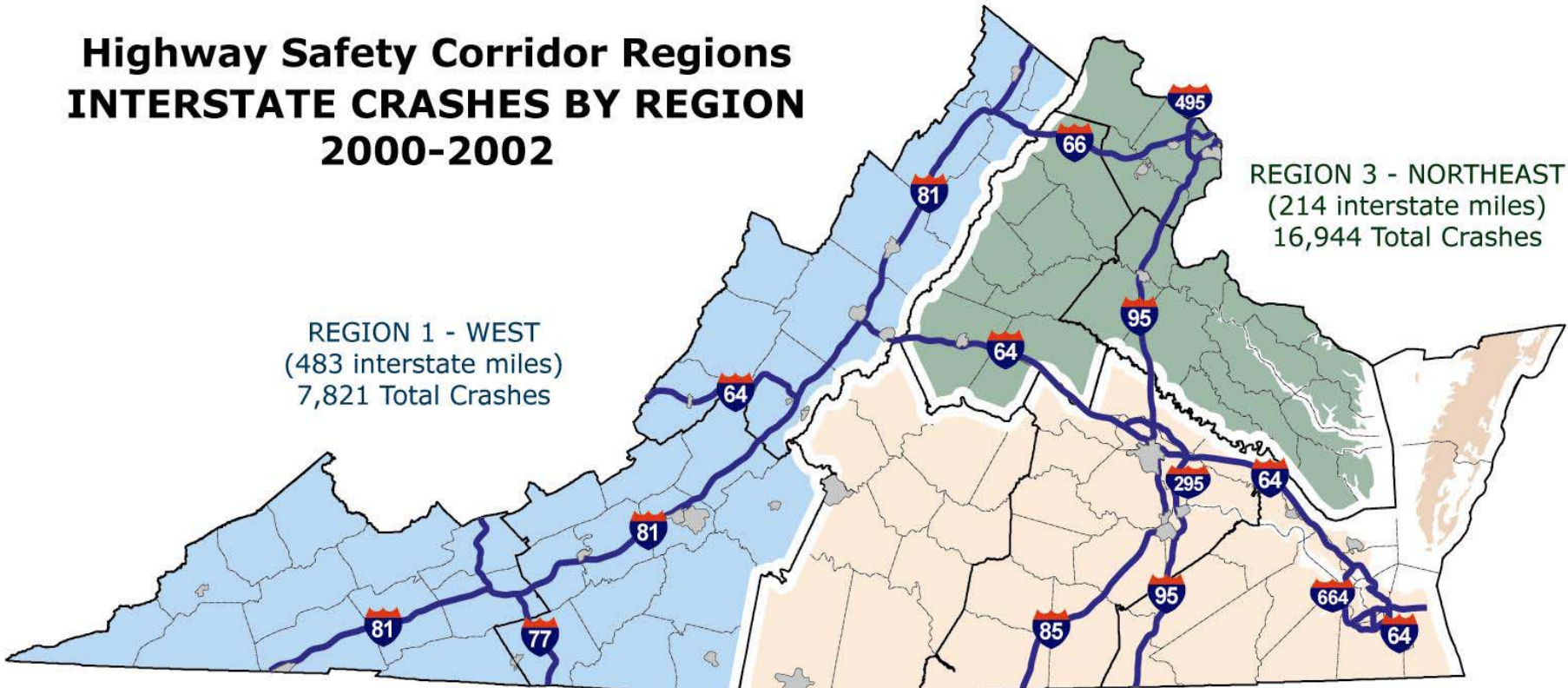
2000-2002

REGION 1 - WEST
(483 interstate miles)
7,821 Total Crashes

REGION 3 - NORTHEAST
(214 interstate miles)
16,944 Total Crashes

REGION 2 - SOUTHEAST
(432 interstate miles)
21,714 Total Crashes

A 'Crash' is a reported accident with \$1,000 or more of damage.



Highway Safety Corridor Program



Criteria Designated by Law

- Review of crash data
- Accident reports
- Type and volume of traffic
- Engineering and traffic studies

Highway Safety Corridor Program



I-81 Crash Frequency

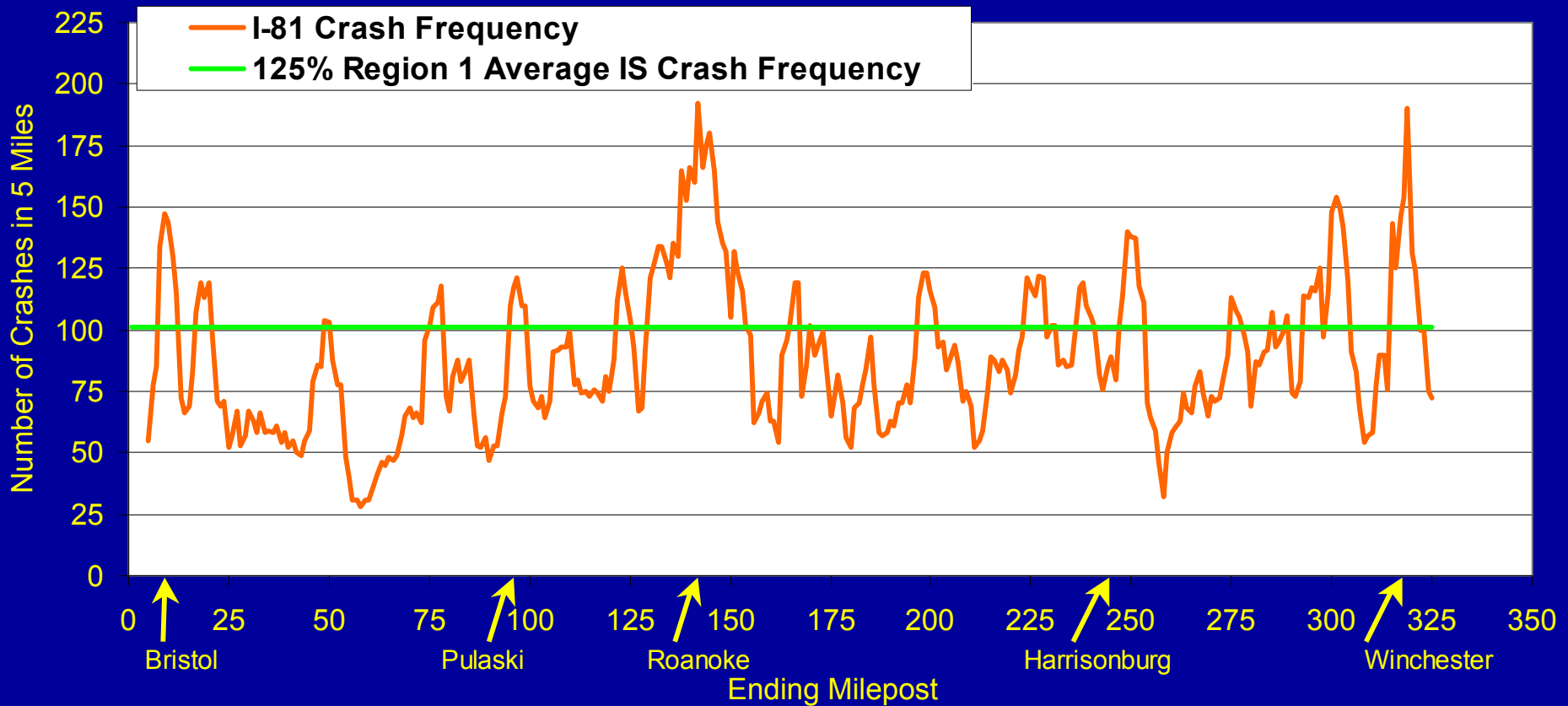
- # Crashes along I-81 by mile-point
- Tennessee state line at left
- West Virginia state line at right
- Look at height and width of peaks
- Where above 125% of regional average

Highway Safety Corridor Program



I-81 Crash Frequency

(2000-2002 Crashes)



Highway Safety Corridor Program

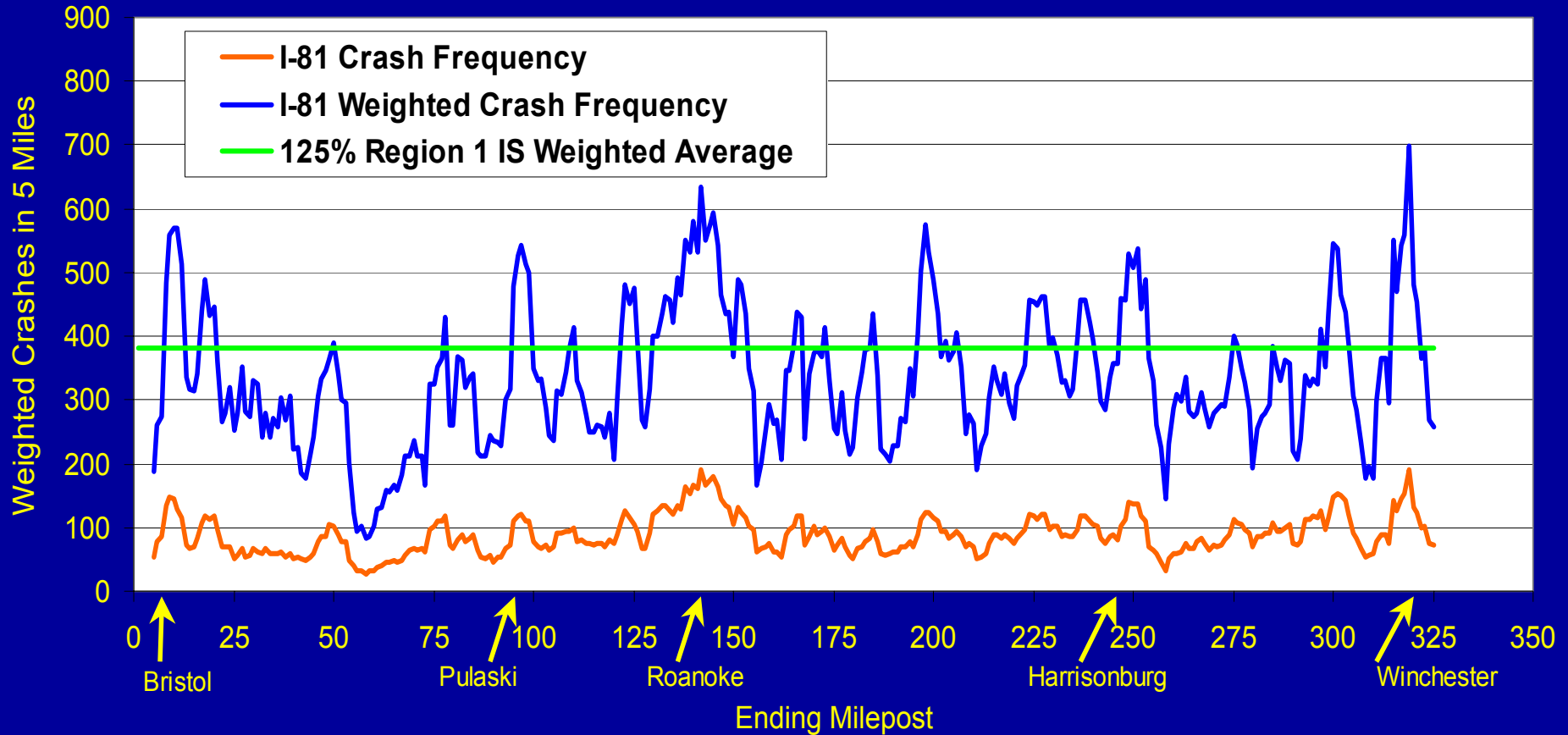


I-81 Crash Frequency Weighted by Severity

- Previous slide – total # crashes
- Also need to consider severity of crash
- Give added emphasis to injury and fatal crashes
- Look at peaks where above 125% of regional average

I-81 Crash Frequency Weighted by Severity

(2000-2002 Crashes, PDO=1, Injury=8, Fatal = 20)



Highway Safety Corridor Program



I-81 Vehicle Mix

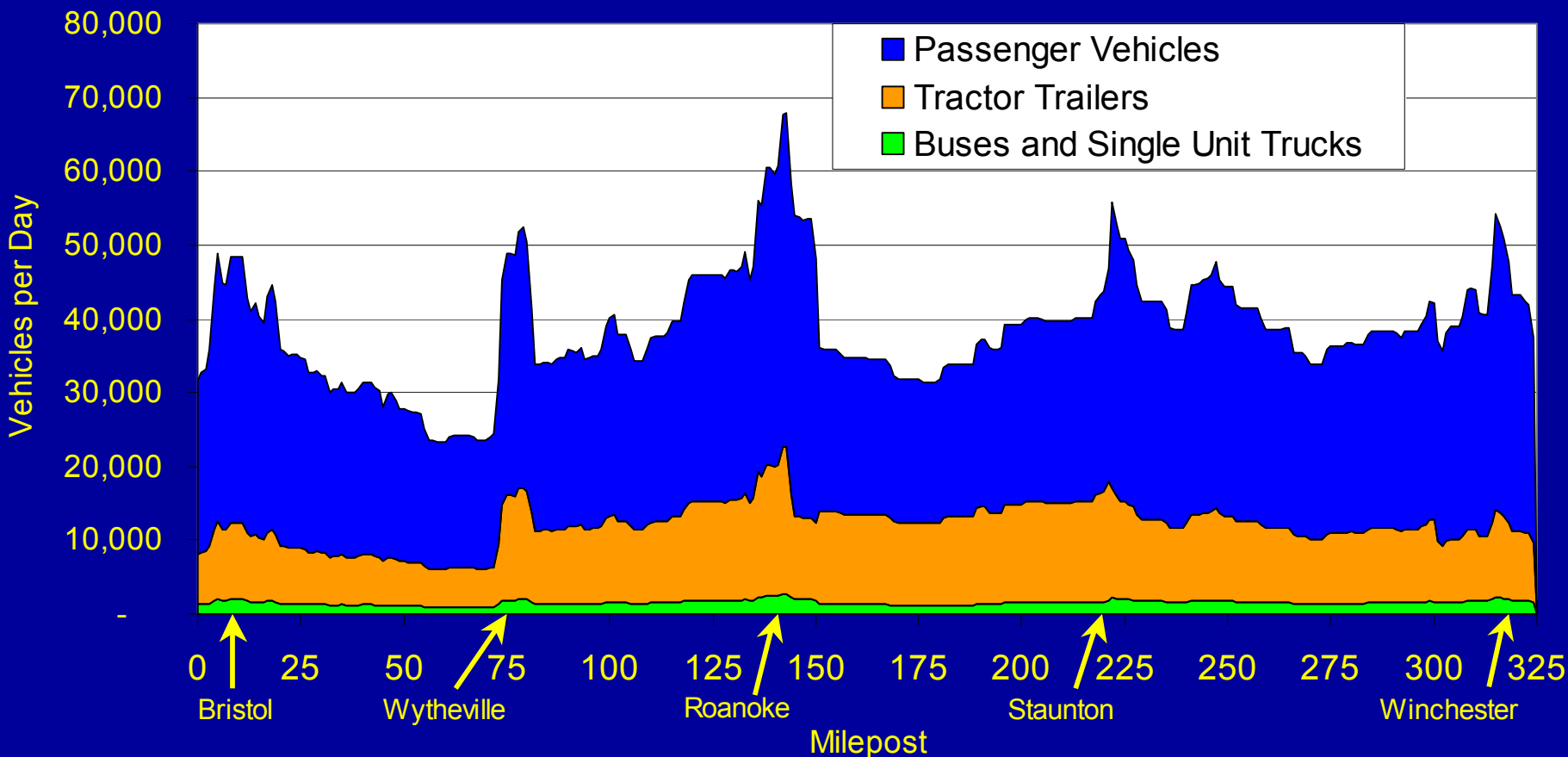
- Tractor-trailers
- Other trucks and buses
- Passenger vehicles

Highway Safety Corridor Program



I-81 Vehicle Mix

I-81 Average Daily Traffic by Vehicle Type (2000-2002)



Highway Safety Corridor Program

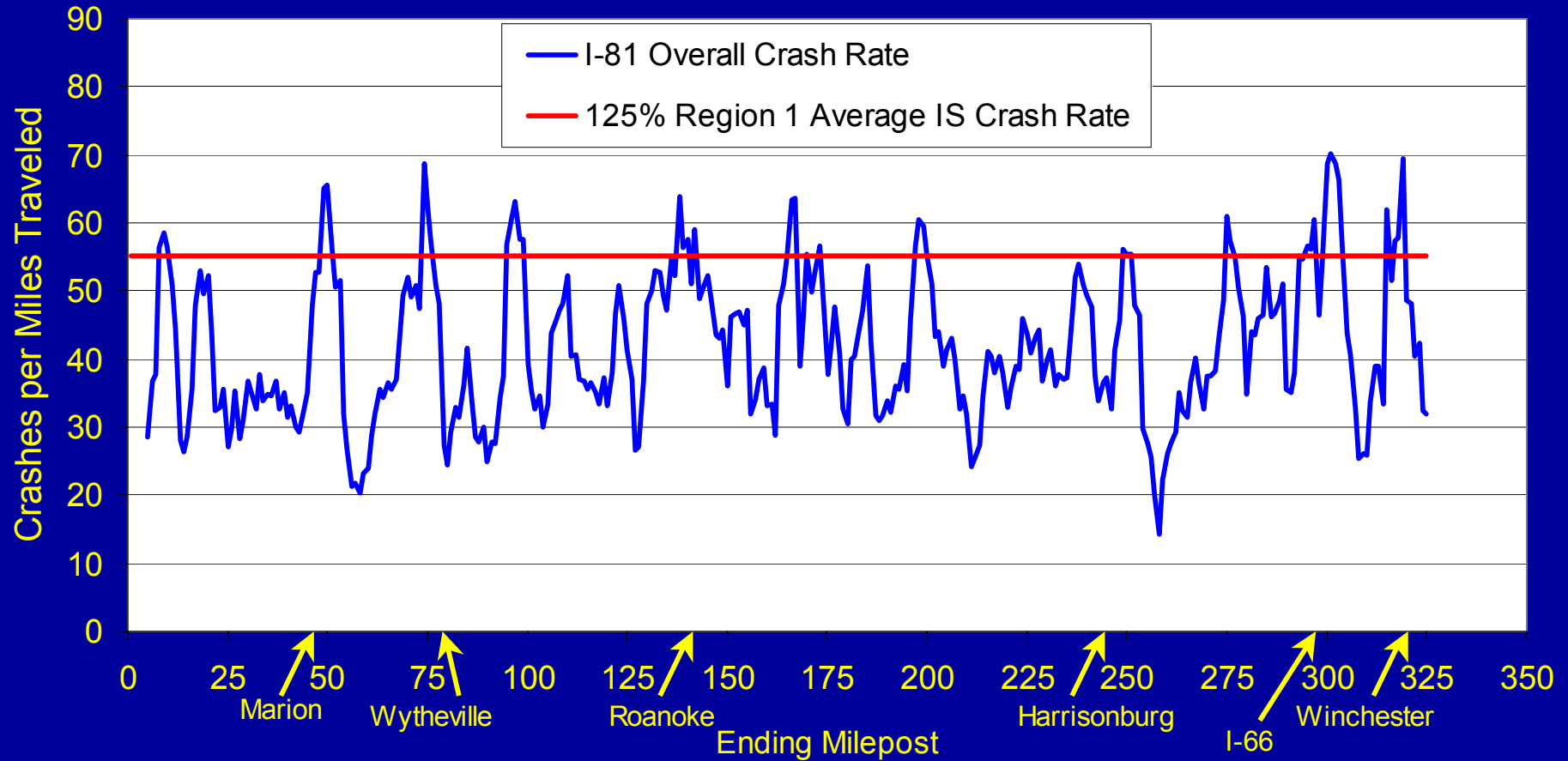


I-81 Crash Rates

- Adjust # crashes for # vehicles on road
- Compare high crash / high volume locations with lower crash / lower volume locations on more even basis

I-81 Crash Rates

(2000-2002 Crashes)



Highway Safety Corridor Program

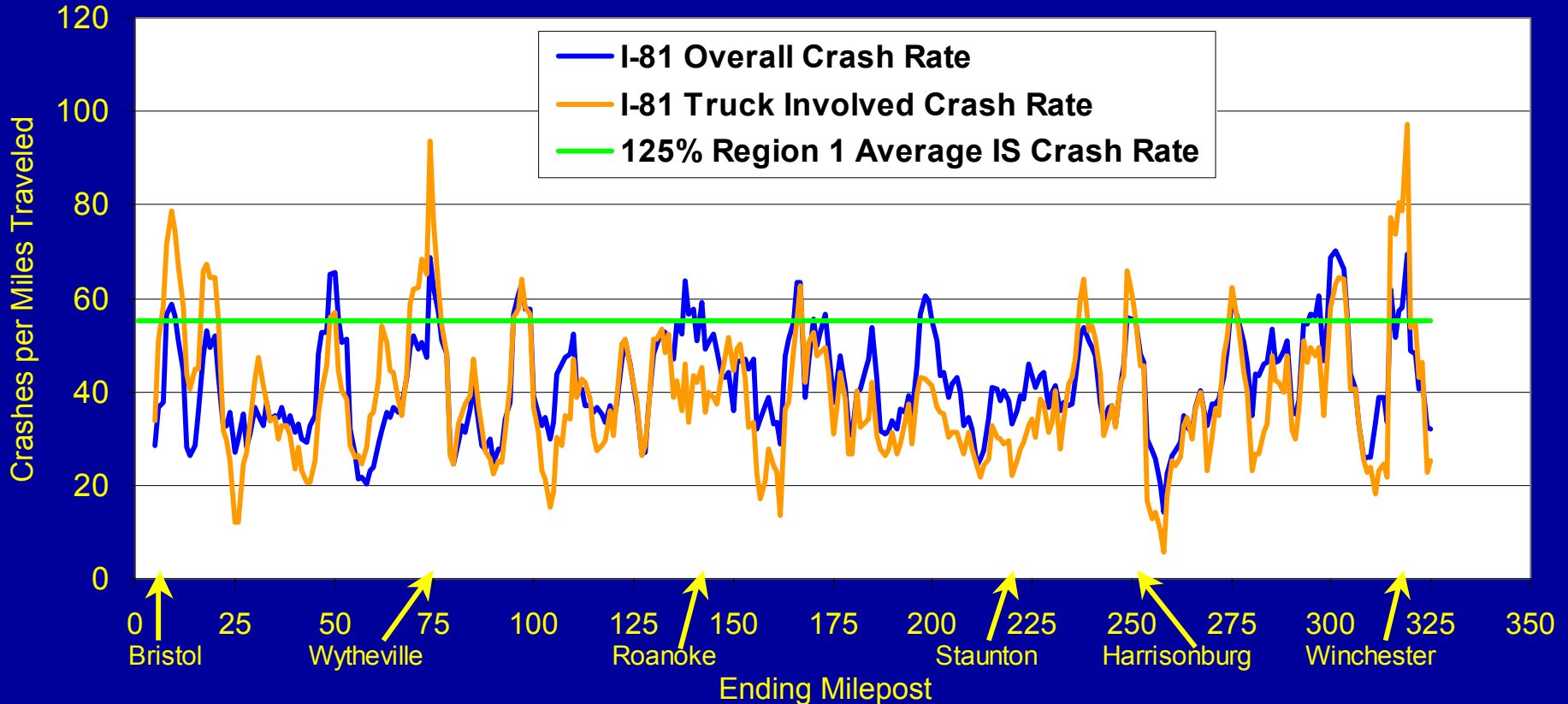


Comparing Rates for Traffic Mix

- Overall crash rate versus truck-involved crash rate
- NOTE: Truck involved crash does not mean truck caused crash

Comparing Rates for Traffic Mix

I-81 Crash Rate Comparison:
All Traffic and Truck Involved (2000-2002 Crashes)



Highway Safety Corridor Program






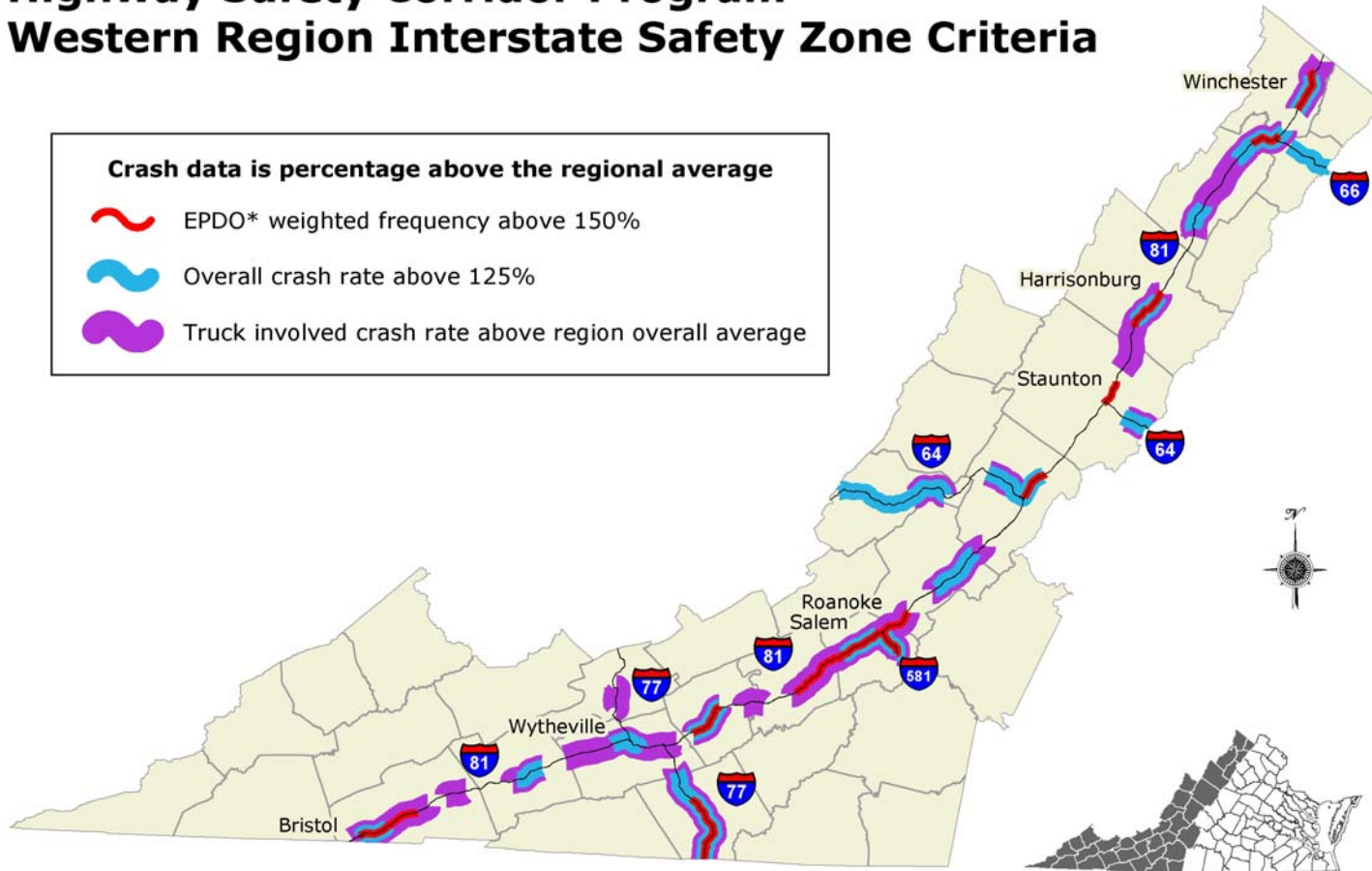
Proposed Safety Criteria

- Crash frequency
- Overall vehicle crash rate
- Truck involved crash rate
- Enforcement capability

Highway Safety Corridor Program Western Region Interstate Safety Zone Criteria

Crash data is percentage above the regional average

-  EPDO* weighted frequency above 150%
-  Overall crash rate above 125%
-  Truck involved crash rate above region overall average



EPDO* is equivalent property damage only crashes (PDO = 1, injury = 8, fatal = 20)

VDOT - Cartography Section - 10/03 - #32

Highway Safety Corridor Program



Next Steps

- **Jan. - Dec. 2004**
 - Designate regional interstate zones
 - Hold public hearings for additional interstate zones
 - Launch public awareness campaign
- **Jan. - Dec. 2005**
 - Analyze potential primary highway zones
 - Monitor, evaluate & report annually

Virginia's Highway Safety Corridor Program

Working Together To Make A Difference

Highway Safety Corridor Program

