



# Rail Industrial Access

Ashton Creek Industrial Park, LLC

Michael Todd, Director of Rail Programs

January 17, 2023





## Ashton Creek Industrial Park, LLC

- **Location:** Chesterfield County
- **Purpose:** Lessee, Commonwealth Building Materials (CBM) is the largest provider of construction products in Virginia. Ashton Creek Industrial Park is CBM's 8<sup>th</sup> location in VA.
- **Activity:** Rail is used to import sheetrock/drywall in mass quantities for distribution.





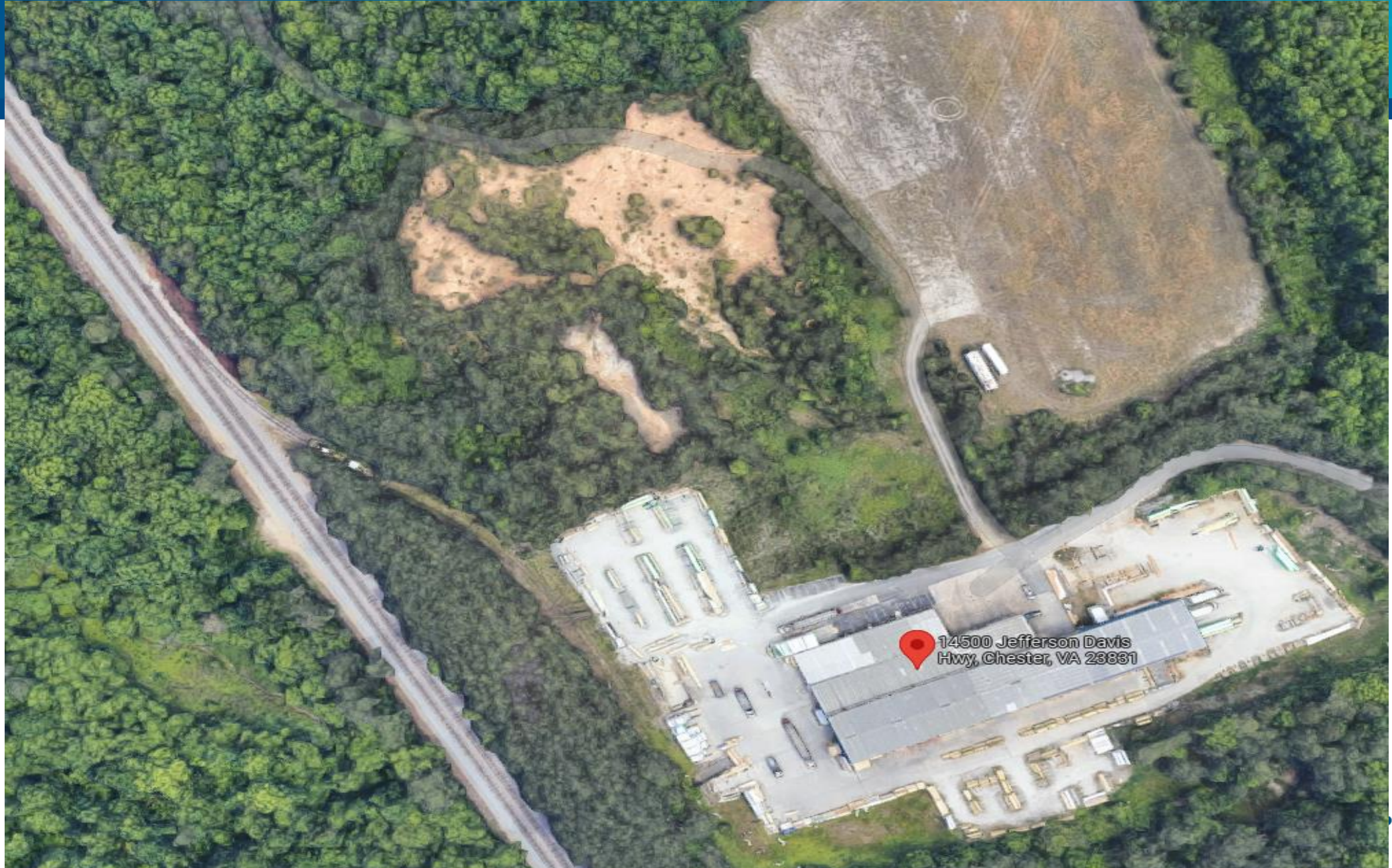
## Ashton Creek Industrial Park, LLC

### Request:

- \$450,000 (\$850,000 total rail cost)
- 1,320 feet of rehabilitation and installation of a new turnout
- \$3.55M Total Investment



# Site Location





NORTH

3050'±  
TO M.P. 15

4+00 END TRK  
A15.6(3)  
3+69.15 P.T.

$\Delta = 32^{\circ}20'27''$   
 $D = 120$   
 $L = 269.51'$   
 $T = 138.70'$   
 $E = 19.70'$

$\Delta = 18^{\circ}52'30''$   
 $D = 120$   
 $L = 157.29'$   
 $T = 79.51'$

1+20 P.C.

0+00 PROP.  
P.S. TRK. A15.6(1)  
INC. MP'S

P.O.T.O

1+50 C.S.  
F = 6.56'  
DERAIL 1+70

GRADE  
36" C.M.P.

$\Delta = 24^{\circ}35'59''$   
 $D = 120$   
 $L = 205.0'$   
 $T = 104.29'$   
 $E = 11.24'$

3+42.29 P.C.

2+00 P.C.

6+47 = 0+00  
PROP. P.S.  
TRK. A15.6(3)

7+87.5  
PROP. P.S.  
PIT

9+08.5 TRK. A15.6(1)  
BUMP. POST

4+101 R/W

CSX R/W

TO ROCKY MT. →

← TO RICHMOND

CSX R/W

100'

100'

E M.L. N.B.  
E M.L. S.B.

~ LEGEND ~

**CSX** TRANSPORTATION ENGINEERING DEPARTMENT

REVISIONS	PROPOSED TRACK'S
-----------	------------------



# Project Benefits

- Carloads: 1,365 annual (0 existing)
- Employment: 18 new jobs  
Existing Economic Development Area  
Above Avg. Unemployment
- Funding: 47% private match for Rail Construction



# Project Score

Categories	Score
Carloads	20
Jobs	8
Transportation % of Total Investment	4
Private % of Rail Investment	8
Local Unemployment	8
Economic Development Area	10
Shortline	0
<b>TOTAL</b>	<b>58</b>



# Recommendation

