

Virginia Highway Safety Update

Virginia's Final Crash and Fatality Data for 2020 with Comparisons to Previous Years

*George W. Bishop IV
Deputy Commissioner
Department of Motor Vehicles*

TREDS Data Comparison: 2020 vs. 2019

Category	2020	2019	+/-	% Change
Fatalities - All crashes	847	827	20	2.42%
Alcohol Related	272	264	8	3.03%
Speed Related	406	349	57	16.33%
Unrestrained	343	304	39	12.83%
Distracted	121	120	1	0.83%
Pedestrian	114	124	-10	-8.06%
Motorcycle	87	89	-2	-2.25%
Teen Driver Involved	72	65	7	10.77%
Mature Driver Involved	179	201	-22	-10.95%
Moped	12	13	-1	-7.69%
Bicycle	8	13	-5	-38.46%
Large Truck Involved	65	52	13	25%
Work Zones	11	17	-6	-35.29%
Serious Injuries - All Crashes	6,798	7,182	-384	-5.35%

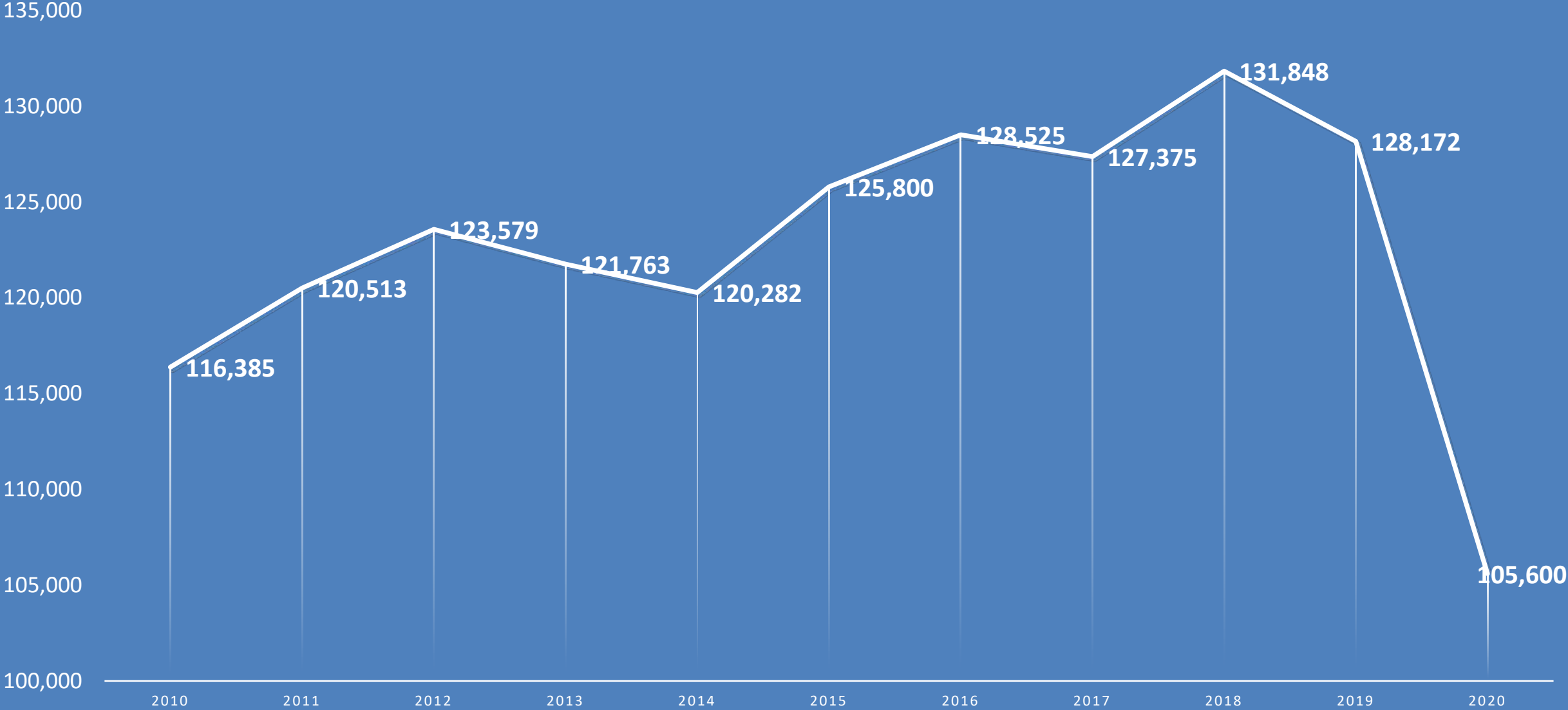


TREDS Data Comparison: 2020 vs. 2019

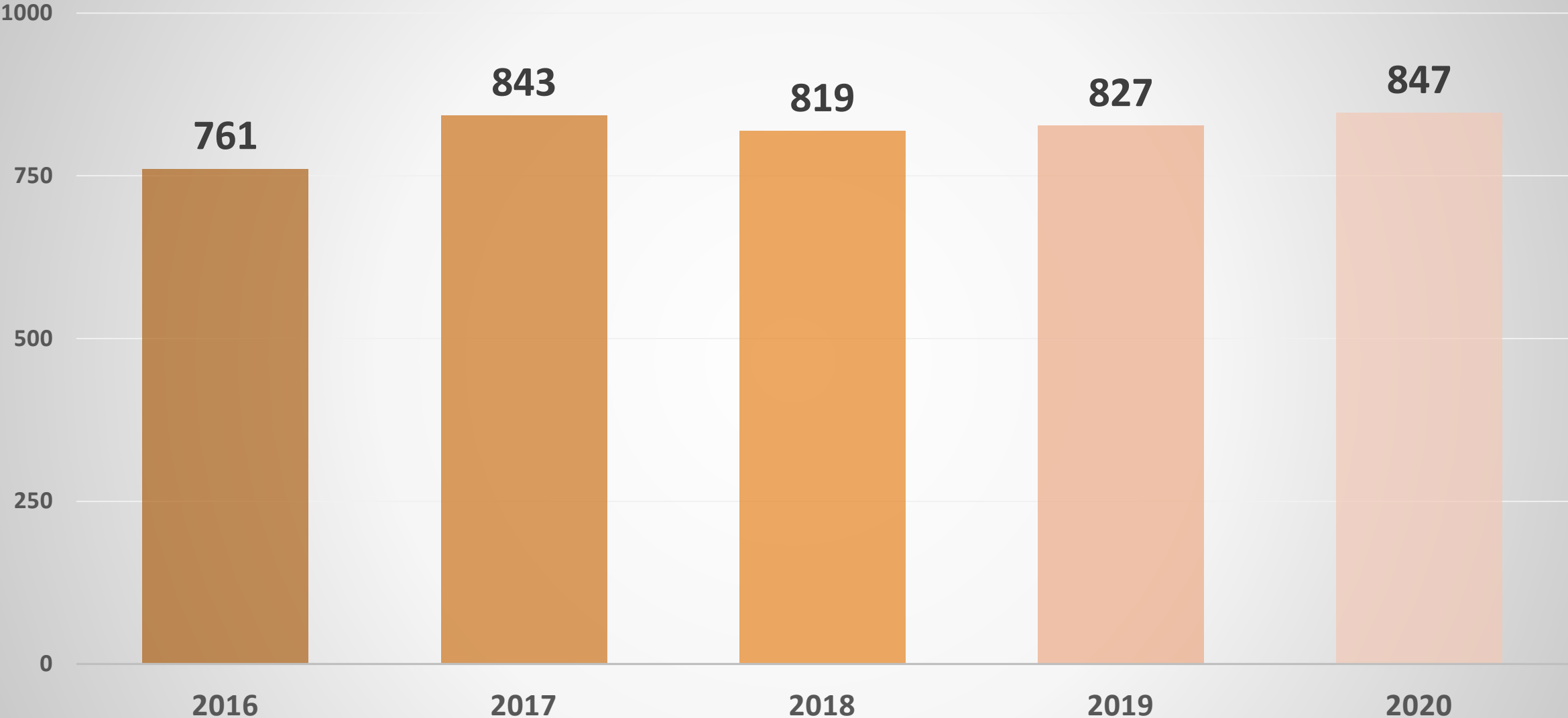
Category	2020	2019	+/-	% Change
Fatalities - All crashes	847	827	20	2.42%
Alcohol Related	272	264	8	3.03%
Speed Related	406	349	57	16.33%
Unrestrained	343	304	39	12.83%
Distracted	121	120	1	0.83%
Pedestrian	114	124	-10	-8.06%
Motorcycle	87	89	-2	-2.25%
Teen Driver Involved	72	65	7	10.77%
Mature Driver Involved	179	201	-22	-10.95%
Moped	12	13	-1	-7.69%
Bicycle	8	13	-5	-38.46%
Large Truck Involved	14	52	-38	-73.08%
Work Zones	11	17	-6	-35.29%
Serious Injuries - All Crashes	6,798	7,182	-384	-5.35%



CRASH TOTALS: 2010 - 2020

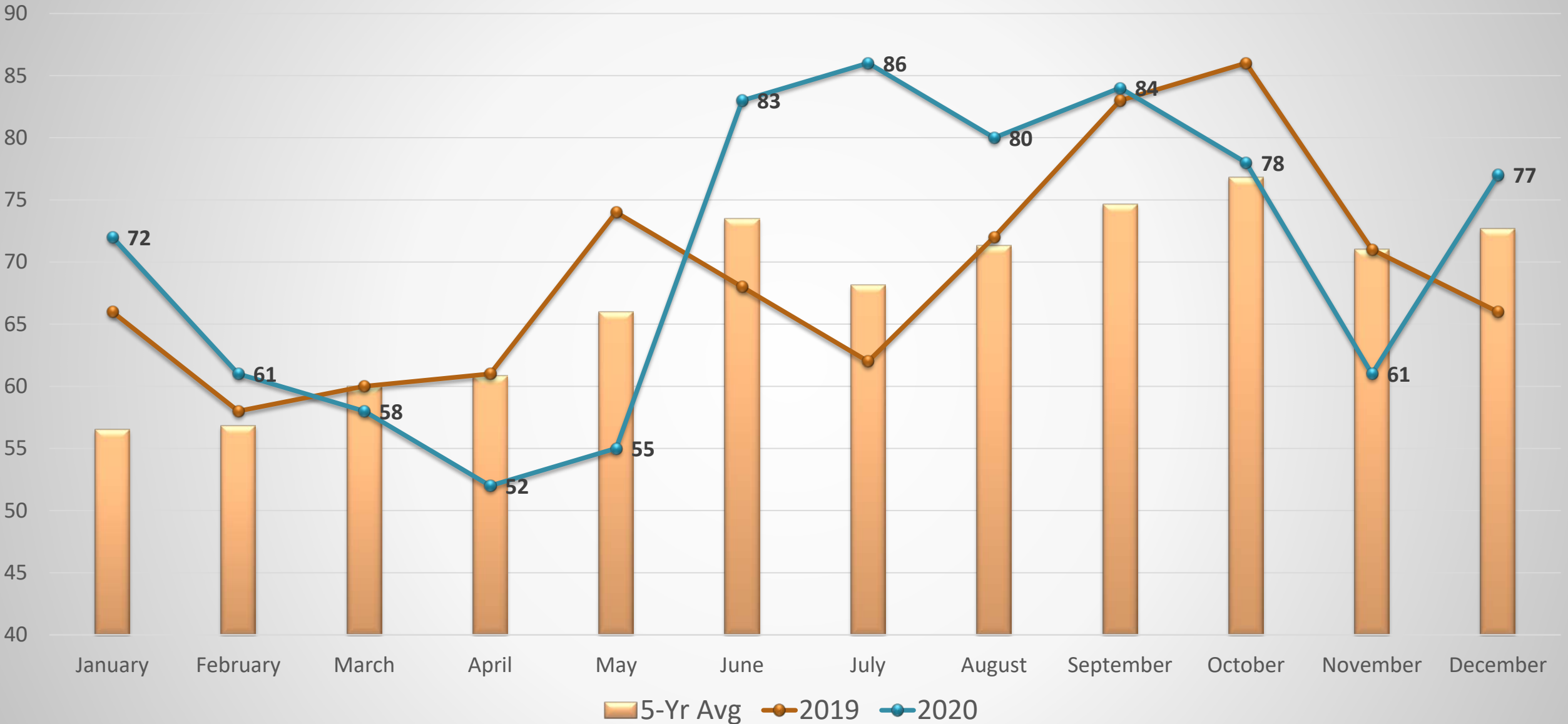


Total Fatalities: 2016 - 2020



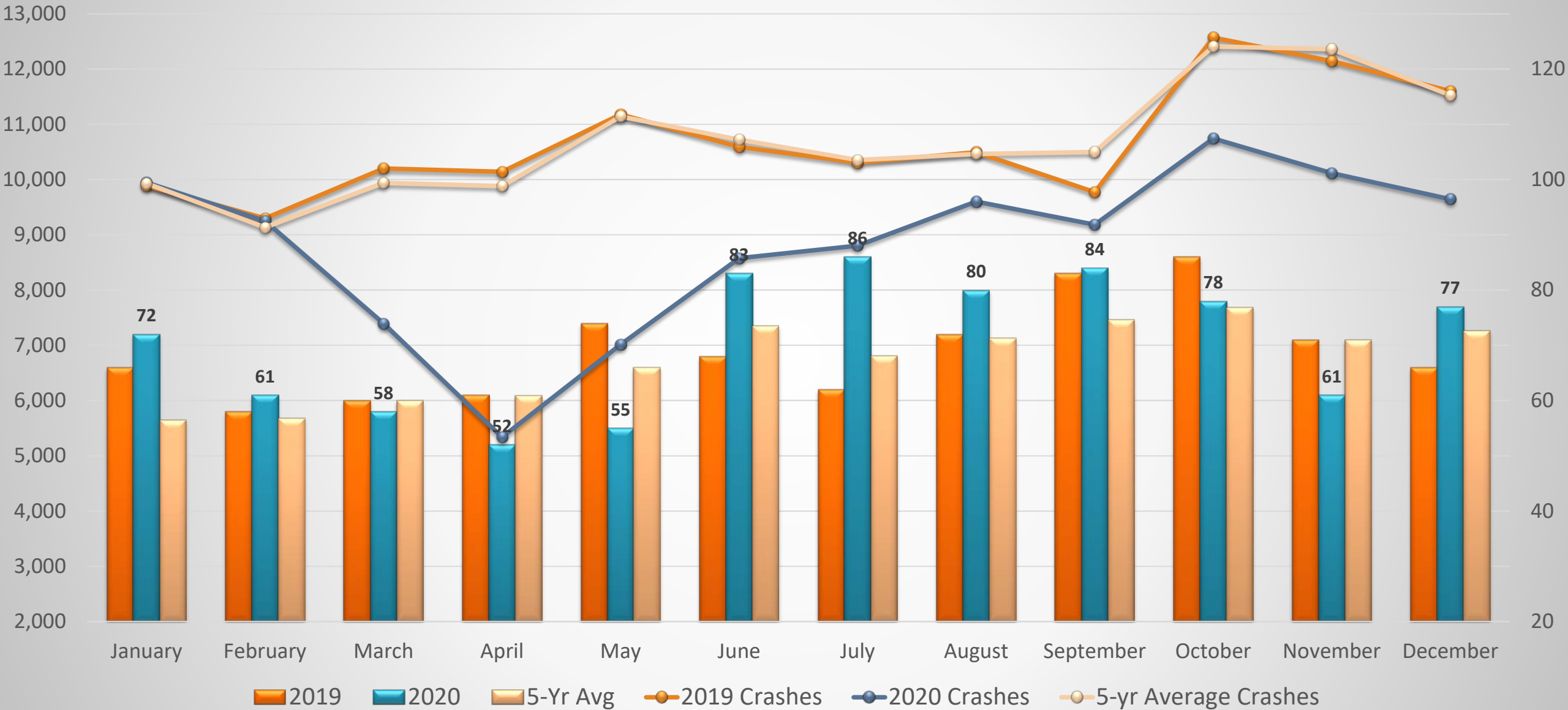
Monthly Fatalities: All Crashes

2020 Compared to 2019 & 5-yr Average (2015-19)

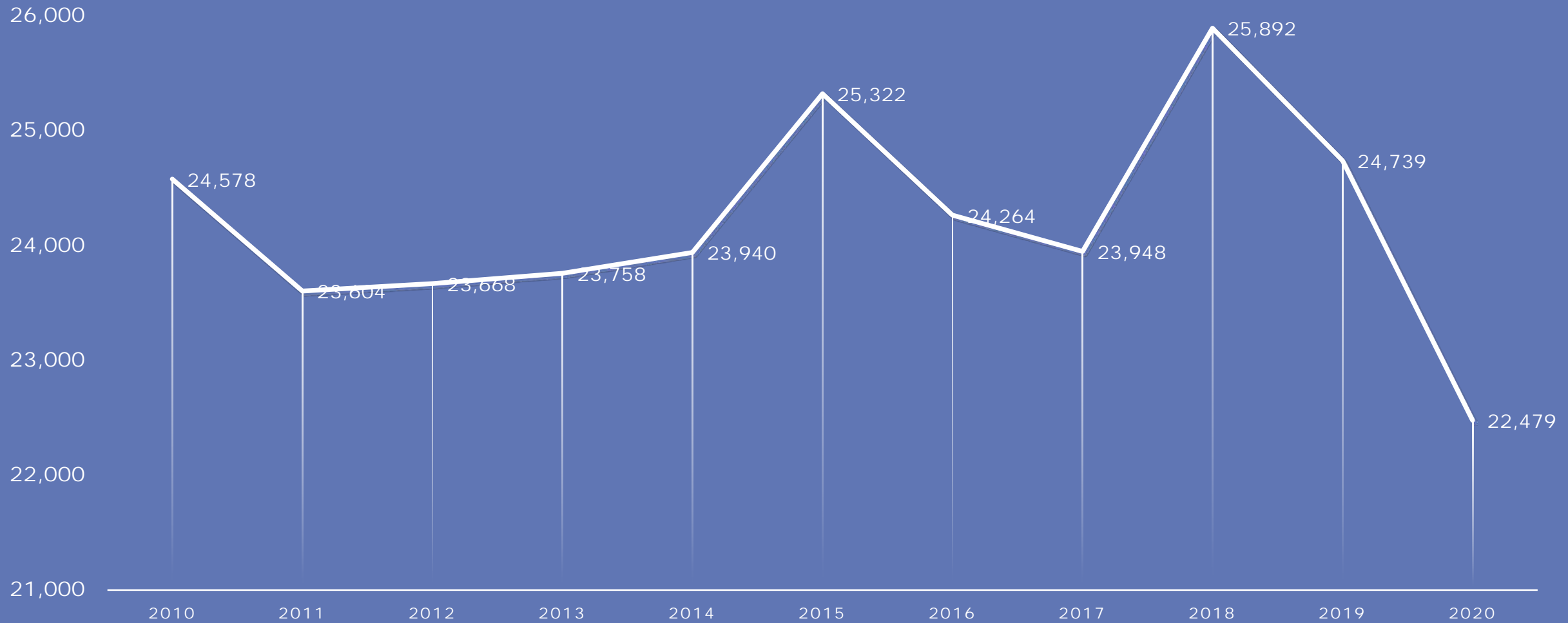


Monthly Crashes & Fatalities: All Crashes

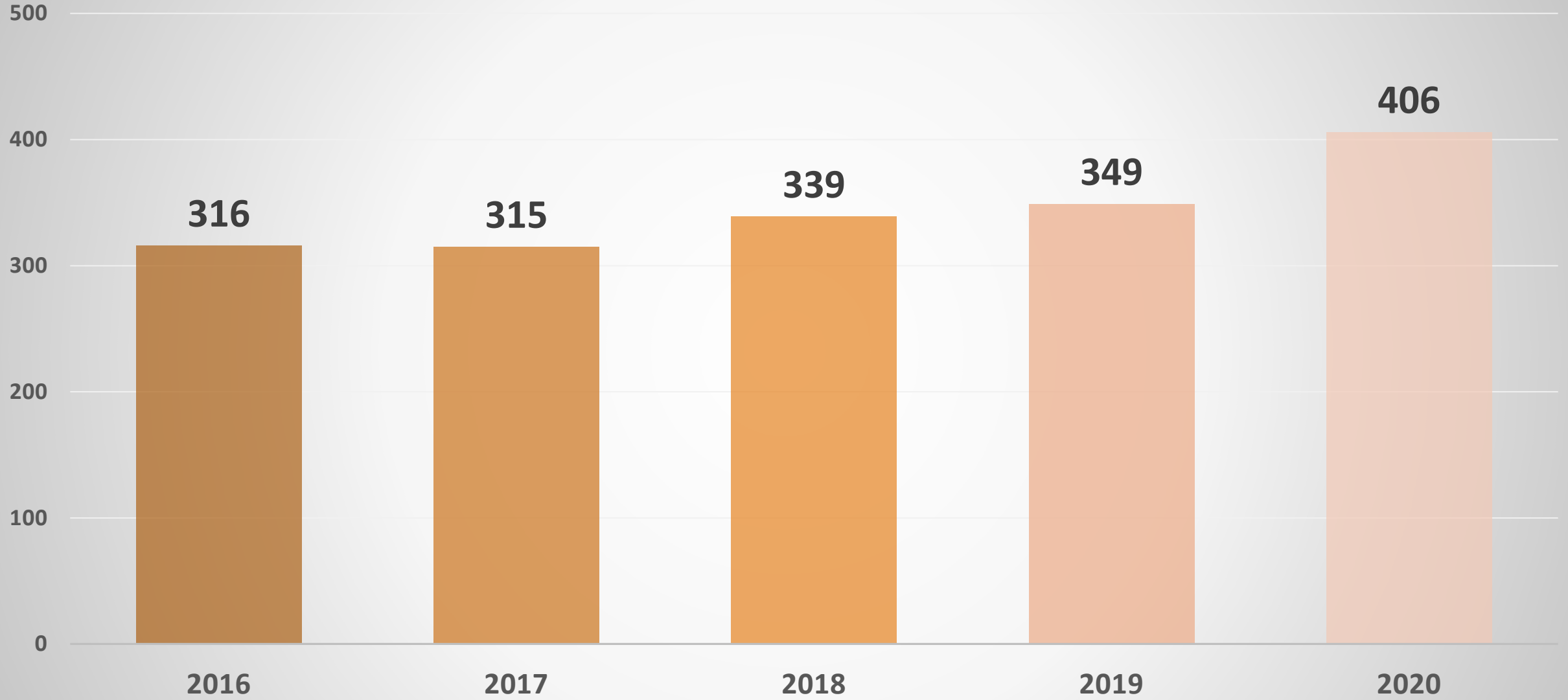
2020 Compared to 2019 & 5-yr Average (2015-19)



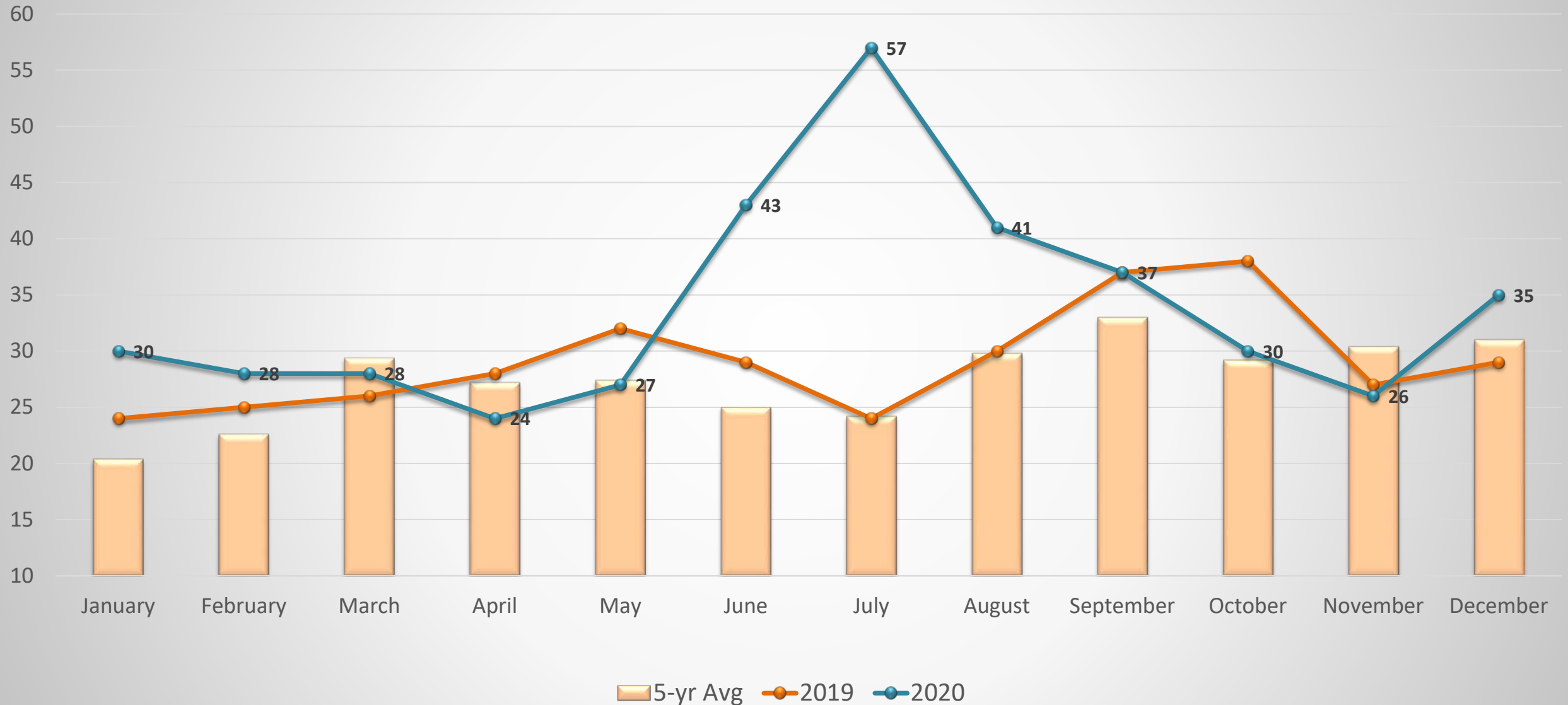
SPEED RELATED CRASHES: 2010 - 2020



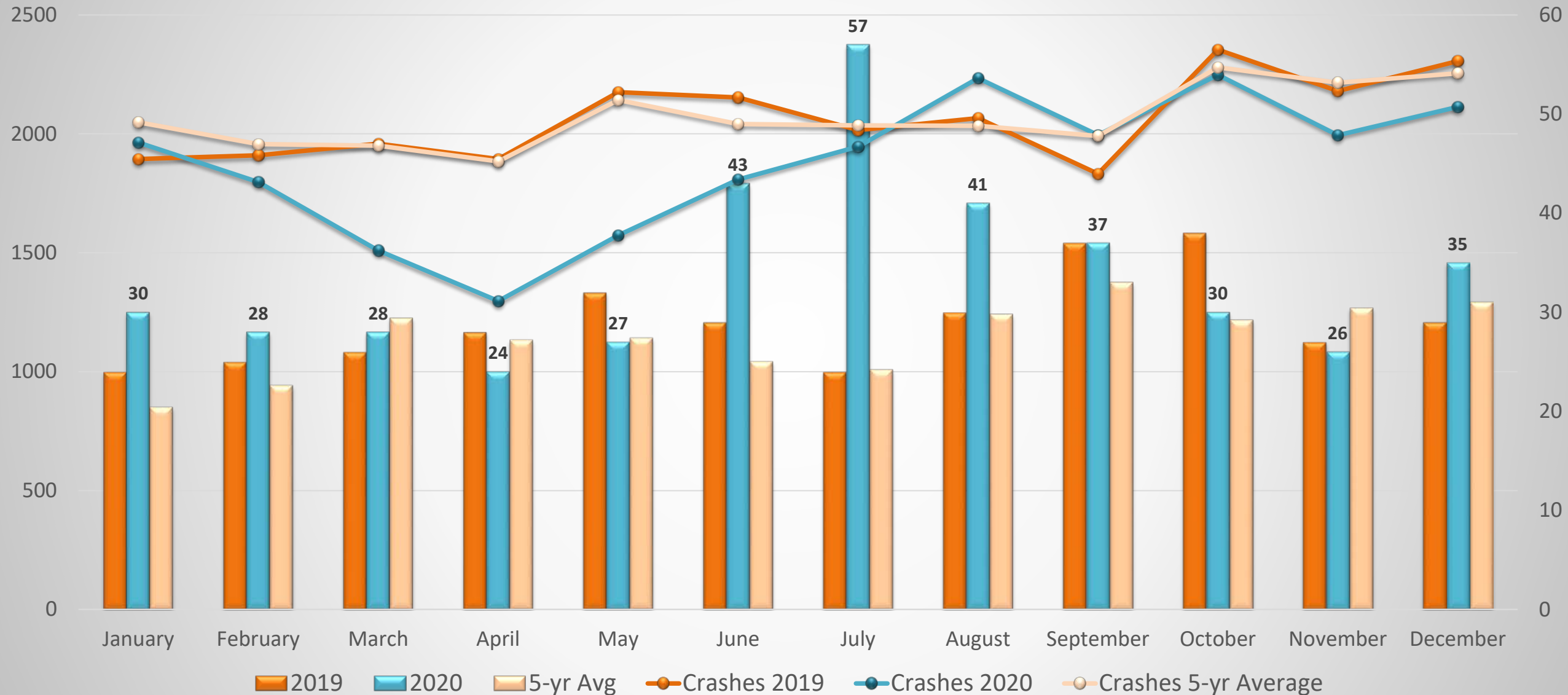
Speed Related Fatalities: 2016 - 2020



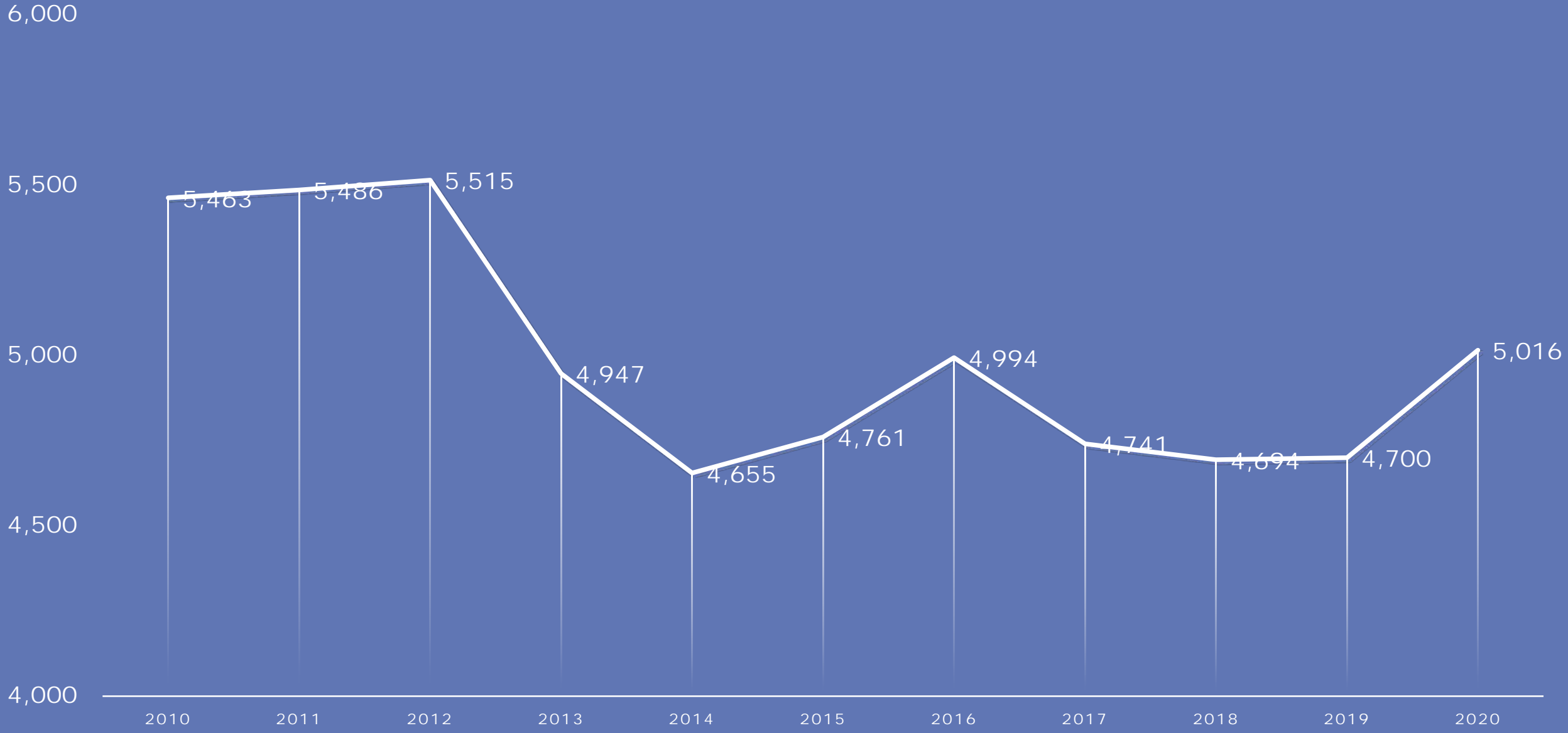
Monthly Fatalities: Speed Related 2020 Compared to 2019 & 5-yr Avg



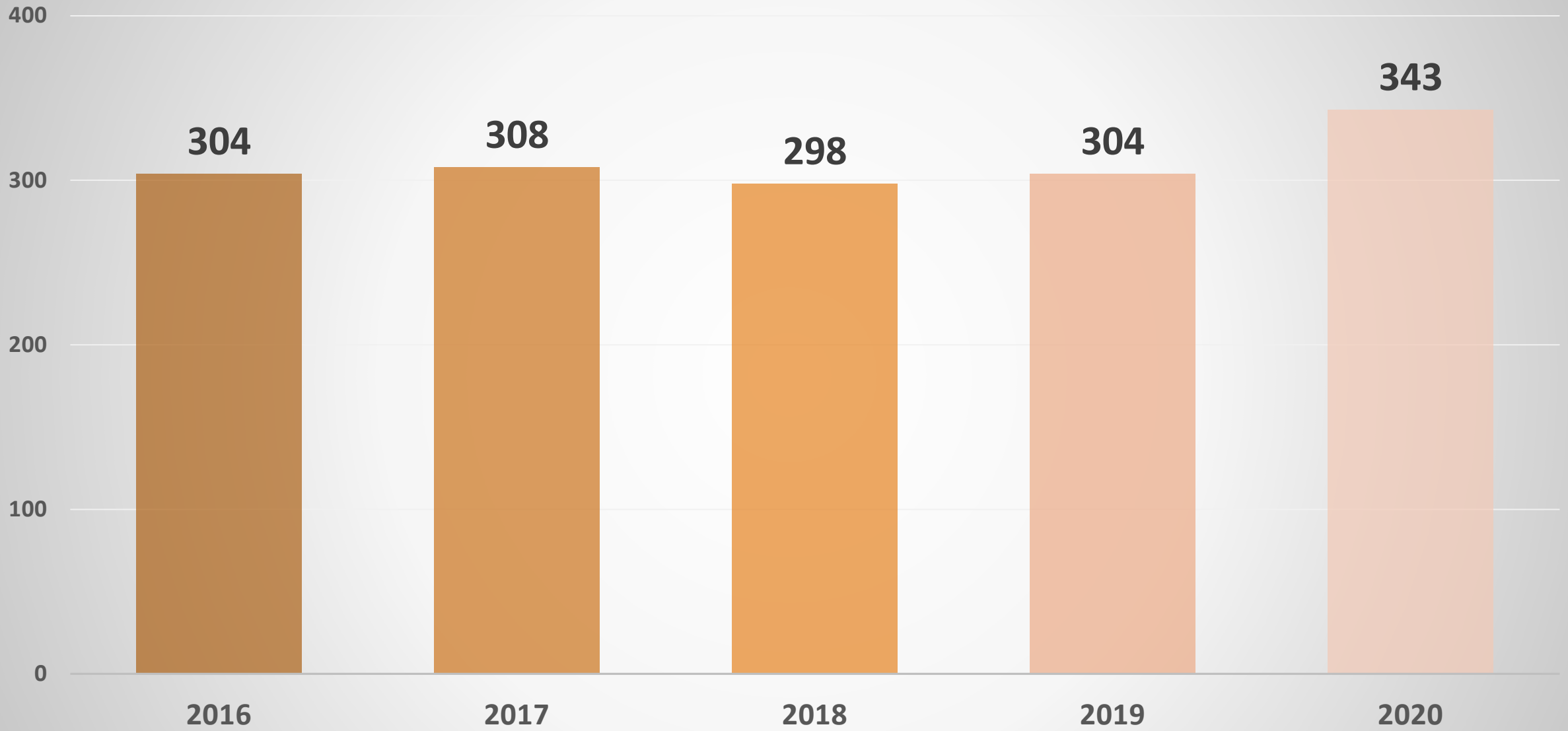
Monthly Crashes & Fatalities: Speed Related 2020 Compared to 2019 & 5-yr Average (2015-19)



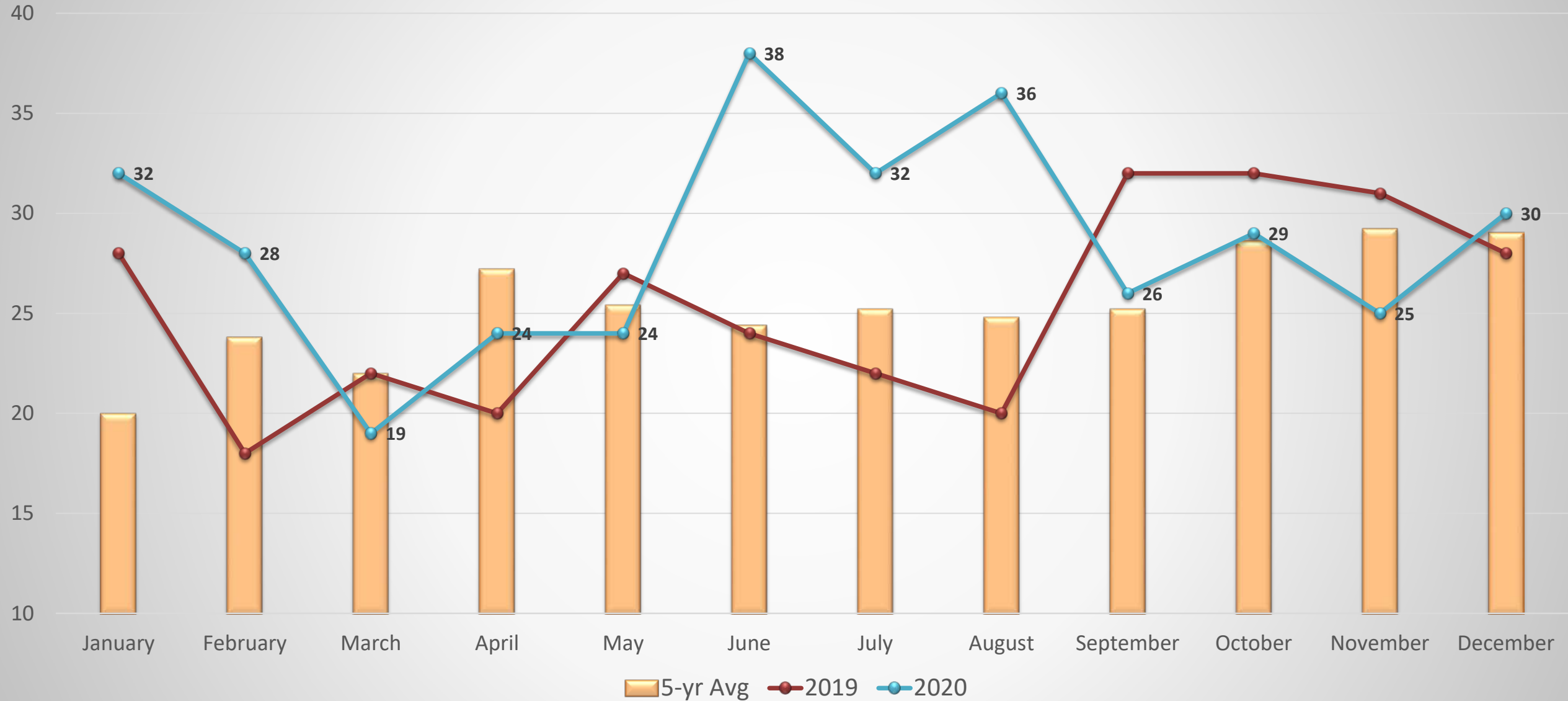
UNRESTRAINED CRASHES: 2010 - 2020



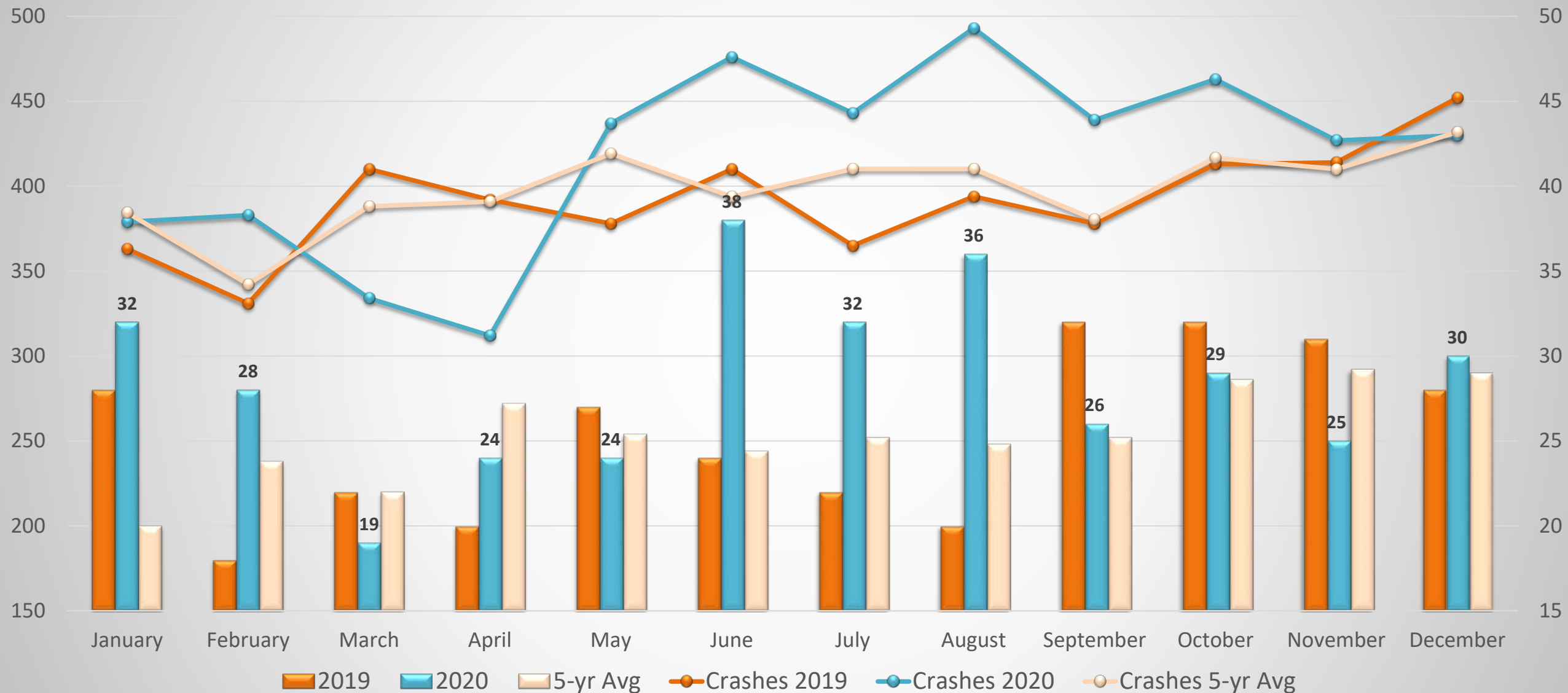
Unrestrained Fatalities: 2016 - 2020



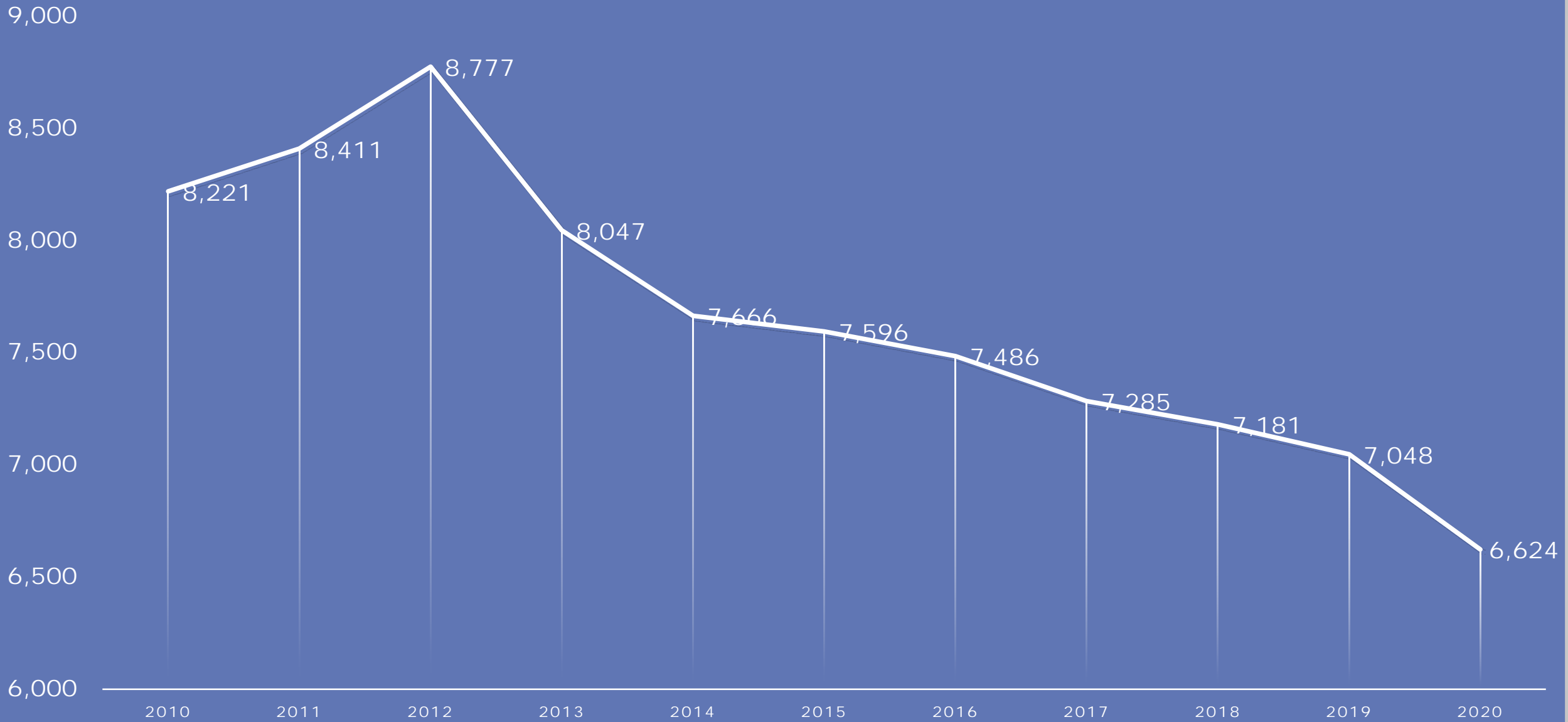
Monthly Fatalities: Unrestrained 2020 Compared to 2019 & 5-yr Avg



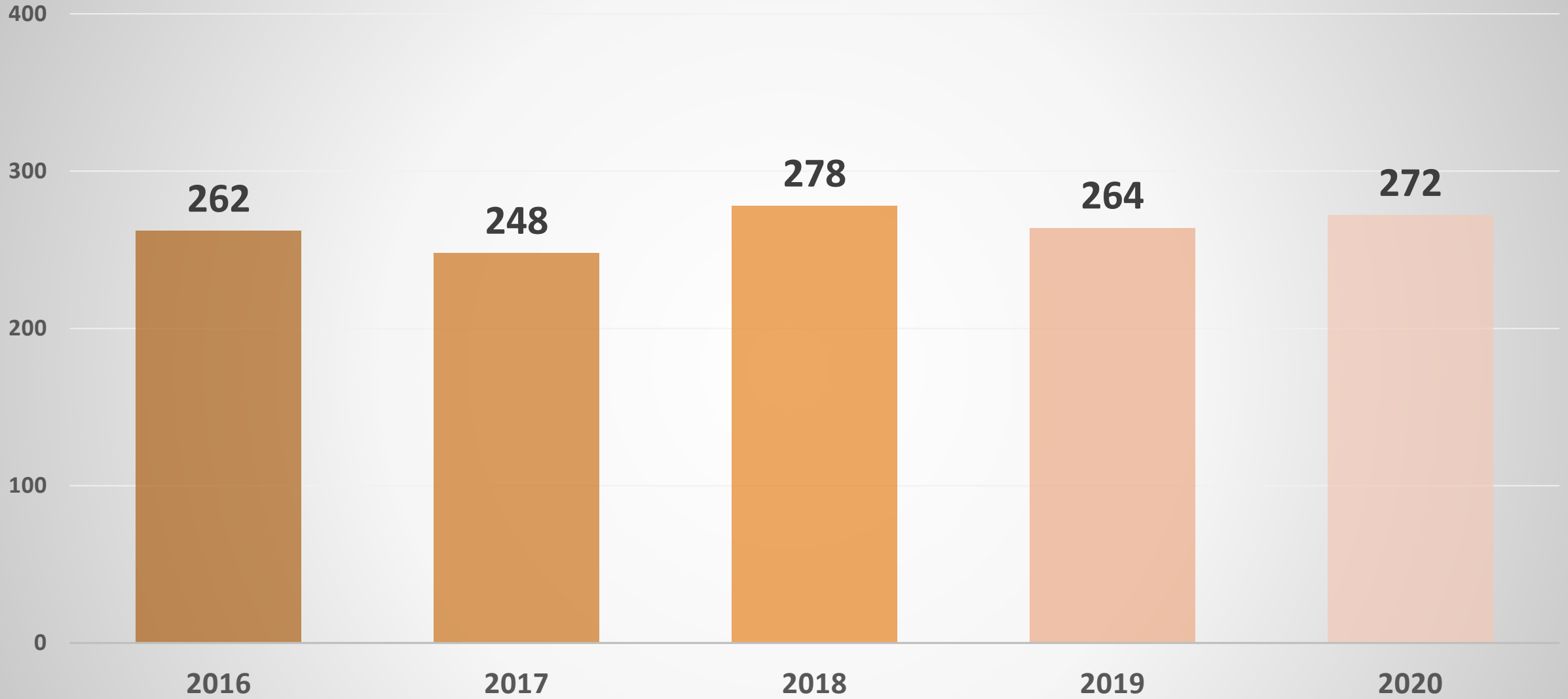
Monthly Crashes & Fatalities: Unrestrained 2020 Compared to 2019 & 5-yr Average (2015-19)



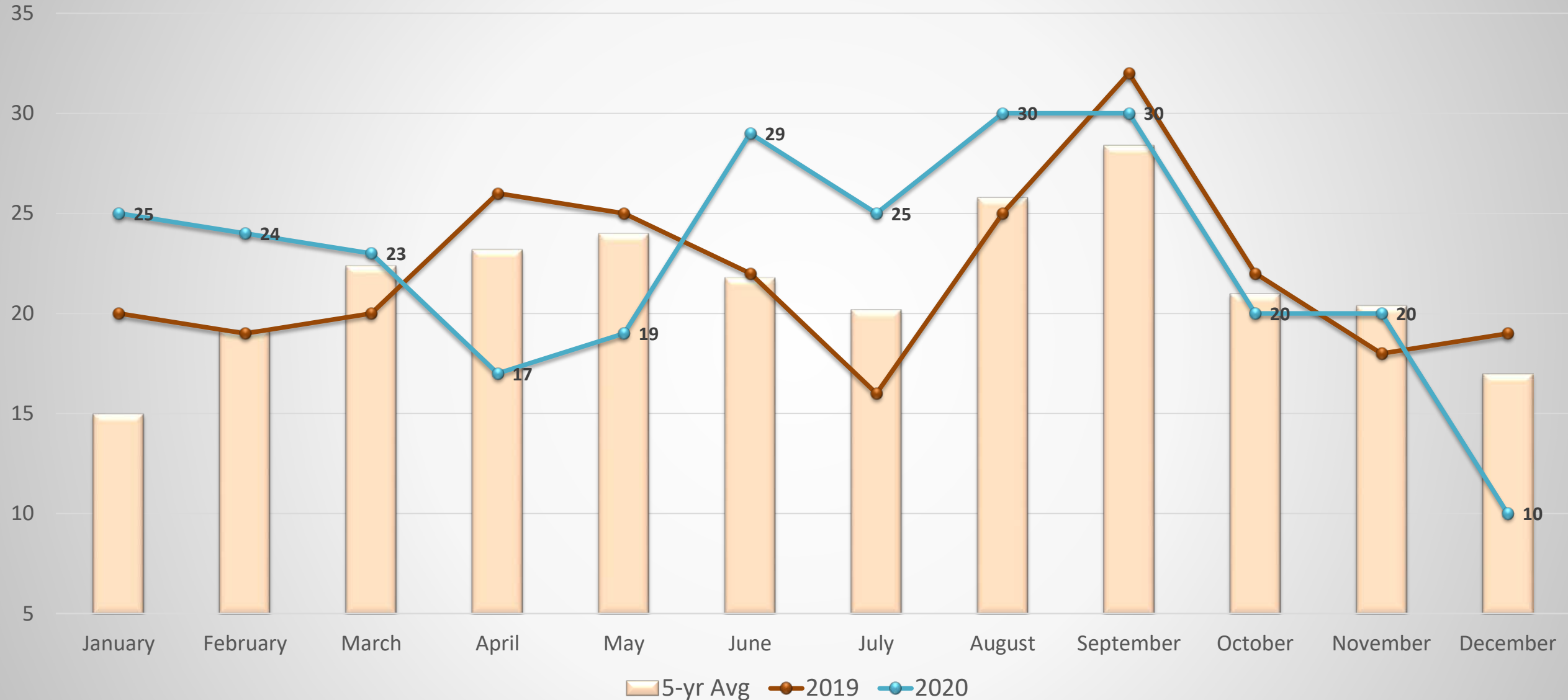
ALCOHOL RELATED CRASHES: 2010 - 2020



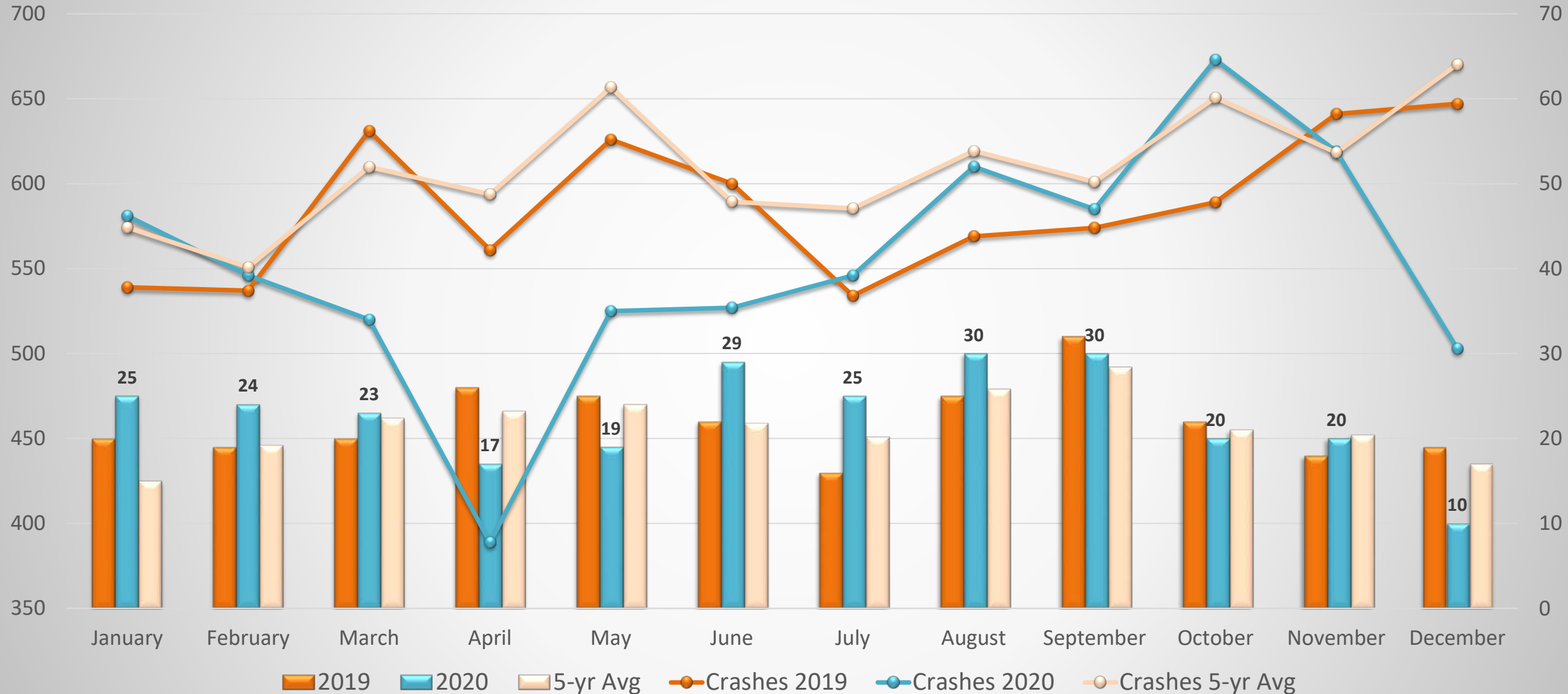
Alcohol Related Fatalities: 2016 - 2020



Monthly Fatalities: Alcohol Related 2020 Compared to 2019 & 5-yr Avg



Monthly Crashes & Fatalities: Unrestrained 2020 Compared to 2019 & 5-yr Average (2015-19)



Calendar Years 2019-2020 % Comparisons	% of Total Fatalities 2020	% of Total Fatalities 2019
Unrestrained Fatalities	56.14%	52.6%
Speed-Related Fatalities	47.93%	42.20%
Alcohol-Related Fatalities	32.11%	31.92%
Distracted Driving Fatalities	14.29%	14.51%
Mature Driver Involved Fatalities	21.13%	24.30%
Pedestrian Fatalities	13.46%	14.99%
Motorcycle Fatalities	10.27%	10.76%

Virginia Highway Safety Update

Questions?

George Bishop

Deputy Commissioner, DMV

george.bishop@dmv.virginia.gov

804-474-2284