



## COMMONWEALTH of VIRGINIA

### *Commonwealth Transportation Board*

Shannon Valentine  
Chairperson

1401 East Broad Street  
Richmond, Virginia 23219

(804) 786-2701  
Fax: (804) 786-2940

*Agenda item # 2*

### **RESOLUTION OF THE COMMONWEALTH TRANSPORTATION BOARD**

**June 17, 2020**

### **MOTION**

**Made By: Ms. Hynes, Seconded By: Mr. Rucker**

**Action: Motion Carried, Unanimously**

**Title: Limited Access Control Changes (LACCs) for Route 28 (Centreville Road) Widening  
from South of Compton Road (Route 665) to South of Route 29 (Lee Highway)  
Fairfax County**

**WHEREAS**, on July 19, 1984, the State Highway and Transportation Commission, predecessor the Commonwealth Transportation Board (CTB), designated State Route 28 (Centreville Road) from 0.12 mile north of Fairfax-Prince William County Line to 0.10 mile south of the intersection of U.S. Route 29 (Lee Highway) in Fairfax County, State Highway Project 0028-029-106, C502, as a Limited Access Highway in accordance with Article 4, Chapter 1, Title 33.1 of the 1950 *Code of Virginia* and with State Highway and Transportation Commission Policy; and

**WHEREAS**, on April 21, 1988, the CTB in connection with Route 28 (Centreville Road), State Highway Project 0028-029-106, RW-202 revised a 50-foot break in the limited access located opposite Station 466+39.42 (SBL centerline) for a private driveway. The revision reflected a limited access break approximately 95 feet south of the original location; and

**WHEREAS**, Fairfax County Department of Transportation (FCDOT) Project 2G40-100-000; State Highway Project 0028-029-269, P101, R201, C501; UPC# 108720 (the "Project") provides for the widening of Route 28 (Centreville Road) from four lanes to six lanes to include curb and gutter, intersection improvements, and construction of a shared-use path on both sides of Route 28 (Centreville Road) within the areas designated as limited access; and,

Resolution of the Board  
Proposed Limited Access Control Change (LACCs)  
Route 28 (Centreville Road) Widening from South of Compton Road (Route 665) to South of  
Route 29 (Lee Highway)  
Fairfax County  
June 17, 2020  
Page 2 of 3

**WHEREAS**, the widening of Route 28 (Centreville Road) from 0.10 mile south of Compton Road (Route 665) to 0.20 mile south of Route 29 (Lee Highway) requires outward shift of the limited access lines at various locations, requires adjustments to the limited access lines to reflect the current location of intersecting public roadways, and requires elimination of several breaks in the limited access lines to enhance traffic safety and operations, as shown on the Limited Access Line Exhibits and the Limited Access Control Point Stations and Offset Table (attached); and

**WHEREAS**, FCDOT held a Design Public Hearing (“Hearing”) for the Project, including the current and proposed locations of the limited access lines, on September 23, 2019, between 6:30 pm and 9:00 pm at Centreville Elementary School, 14440 Green Trails Blvd., Centreville, Virginia 20121, and allowed public input to be collected concerning the request; and

**WHEREAS**, proper notice of the Hearing was given in advance, and all those present were given a full opportunity to express their opinions and recommendations for or against the Project as presented; their statements being duly recorded; and

**WHEREAS**, the economic, social and environmental effects of the Project have been duly examined and given proper consideration and this evidence, along with all other relevant evidence, has been carefully reviewed; and

**WHEREAS**, the Virginia Department of Transportation (VDOT) Northern Virginia District Office has reviewed and approved the traffic analysis report completed in July 2019 and found that it adequately addresses the impacts from the Project and the proposed LACCs; and

**WHEREAS**, the Project is in compliance with National Environmental Policy Act (NEPA) requirements and a Categorical Exclusion (CE) was prepared under an agreement between the VDOT and Federal Highway Administration (FHWA). The FHWA approved the Final CE on October 30, 2019; and

**WHEREAS**, the Project is located in a non-attainment area for ozone. The Project is included in the currently conforming FY 2017-2022 Transportation Improvement Program (TIP) and the Northern Virginia Transportation Authority (NVTA) TransAction 2040 Plan. The NVTA 2040 Plan and TIP are developed by the Metropolitan Planning Organization for the region. The project was included in the most recent conformity analysis completed in October 2018 (Project 737-VP6N); and

**WHEREAS**, the Project is in Fairfax County and is supported by letters from the Director of the FDOT dated February 12, 2020, indicating the County Board of Supervisors support of the Project and the proposed LACCs; and

Resolution of the Board  
Proposed Limited Access Control Change (LACCs)  
Route 28 (Centreville Road) Widening from South of Compton Road (Route 665) to South of  
Route 29 (Lee Highway)  
Fairfax County  
June 17, 2020  
Page 3 of 3

**WHEREAS**, the Chief Engineer has determined that the proposed LACCs will not adversely affect the safety or operation of the highways; and

**WHEREAS**, the VDOT has reviewed the requested LACCs and determined that all are in compliance with §33.2-401 of the *Code of Virginia* and that the requirements of 24 VAC 30-401-20 have been met; and

**WHEREAS**, the VDOT recommends approval of the LACCs as shown on the Limited Access Line Exhibits and the Limited Access Control Point Stations and Offset Table (attached).

**NOW, THEREFORE, BE IT RESOLVED**, in accordance with §33.2-401 of the *Code of Virginia* and Title 24, Agency 30, Chapter 401 of the *Virginia Administrative Code*, that the CTB hereby finds and concurs in the determinations and recommendations of the VDOT made herein, and directs that Route 28 (Centreville Road) from 0.12 mile north of Fairfax-Prince William County Line to 0.10 mile south of the intersection of U.S. Route 29 (Lee Highway) in Fairfax County continue to be designated as a limited access control area, with the boundaries of limited access control being modified from the current locations as shown on the Limited Access Line Exhibits and the Limited Access Control Point Stations and Offset Table (attached).

**BE IT FURTHER RESOLVED**, the location of the shared-use path within the area designated as limited access and its construction and maintenance is approved as proposed and presented to the public by FCDOT, as the same may be modified during ongoing design review.

**BE IT FURTHER RESOLVED**, that pedestrians and bicyclists are authorized to use the proposed shared use path on both sides Route 28 within the areas designated as limited access.

**BE IT FURTHER RESOLVED**, the Commissioner of Highways is authorized to take all actions and execute any and all documents necessary to implement such changes.

#####

**CTB Decision Brief**  
**Proposed Limited Access Control Changes (LACCs)**  
**Route 28 (Centreville Road) Widening from South of Compton Road (Route 665) to South**  
**of Route 29 (Lee Highway)**  
**Fairfax County Department of Transportation Project 2G40-100-000;**  
**Project 0028-029-269, P101, R201, C501**  
**UPC# 108720**  
**Fairfax County**

**Issues:** The area designated as limited access previously approved for Route 28 (Centreville Road) needs to be modified to accommodate the widening of Route 28 (Centreville Road) from four lanes to six lanes to include curb and gutter, intersection improvements, and construction of a shared-use path on both sides of Route 28 (Centreville Road) within the areas designated as limited access. The limited access lines also require adjustments to reflect the current location of intersecting public roadways and to eliminate existing breaks in the limited access lines to enhance traffic safety and operations. These changes require the approval of the Commonwealth Transportation Board (CTB) pursuant to §33.2-401 of the *Code of Virginia*, and Title 24, Agency 30, Chapter 401 of the *Virginia Administrative Code*.

**Facts:**

- The State Highway and Transportation Commission, predecessor the Commonwealth Transportation Board (CTB), designated State Route 28 (Centreville Road) from 0.12 mile north of Fairfax-Prince William County Line to 0.10 mile south of the intersection of U.S. Route 29 (Lee Highway) in Fairfax County, State Highway Project 0028-029-106, C502, as a Limited Access Highway on July 19, 1984 in accordance with Article 4, Chapter 1, Title 33.1 of the 1950 *Code of Virginia* and with State Highway and Transportation Commission Policy.
- The CTB, in connection with Route 28 (Centreville Road), State Highway Project 0028-029-106, RW-202 revised a 50-foot break in the limited access located opposite Station 466+39.42 (SBL centerline) for a private driveway on April 21, 1988. The revision reflected a limited access break approximately 95 feet south of the original location.
- Fairfax County Department of Transportation (FCDOT) Project 2G40-100-000; State Highway Project 0028-029-269, P101, R201, C501; UPC# 108720 (the “Project”) provides for the widening of Route 28 (Centreville Road) from four lanes to six lanes to include curb and gutter, intersection improvements, and construction of a shared-use path on both sides Route 28 (Centreville Road) within the areas designated as limited access.
- The widening of Route 28 (Centreville Road) from 0.10 mile south of Compton Road (Route 665) to 0.20 mile south of Route 29 (Lee Highway) requires outward shift of the limited access line at various locations, requires adjustments to the limited access line to reflect the current location of intersecting public roadways, and requires elimination of several breaks in the limited access lines to enhance traffic safety and operations, as shown on the Limited Access Line Exhibits and the Limited Access Control Point Stations and Offset Table (attached).

CTB Decision Brief

Proposed Limited Access Control Change (LACCs)

Route 28 (Centreville Road) Widening from South of Compton Road (Route 665) to South of Route 29 (Lee Highway)

Fairfax County

June 17, 2020

Page 2 of 3

- FCDOT held a Design Public Hearing (“Hearing”) for the Project, including the current and proposed locations of the limited access lines, on September 23, 2019, between 6:30 pm and 9:00 pm at Centreville Elementary School, 14440 Green Trails Blvd., Centreville, Virginia 20121, and allowed public input to be collected concerning the request.
- Proper notice of the Hearing was given in advance, and all those present were given a full opportunity to express their opinions and recommendations for or against the Project as presented; their statements being duly recorded.
- The economic, social, and environmental effects of the Project have been duly examined and given proper consideration, and this evidence, along with all other relevant evidence, has been carefully reviewed.
- The Virginia Department of Transportation (VDOT) Northern Virginia District Office has reviewed and approved the traffic analysis report completed in July 2019 and found that it adequately addresses the impacts from the Project and the proposed LACCs.
- The Project is in compliance with National Environmental Policy Act (NEPA) requirements and a Categorical Exclusion (CE) was prepared under an agreement between the VDOT and Federal Highway Administration (FHWA). The FHWA approved the Final CE on October 30, 2019.
- The Project is located in a non-attainment area for ozone. The Project is included in the currently conforming FY 2017-2022 Transportation Improvement Program (TIP) and the Northern Virginia Transportation Authority (NVTA) TransAction 2040 Plan. The NVTA 2040 Plan and TIP are developed by the Metropolitan Planning Organization for the region. The project was included in the most recent conformity analysis completed in October 2018 (Project 737-VP6N).
- The Project is in Fairfax County and is supported by letters from the Director of the FCDOT dated February 12, 2020, indicating the County Board of Supervisors support of the Project and the proposed LACCs.
- The Chief Engineer has determined that the proposed LACCs will not adversely affect the safety or operation of the highways.
- The proposed LACCs are in compliance with §33.2-401 of the *Code of Virginia* and with the policies and requirements of the CTB contained in Title 24, Agency 30, Chapter 401 of the *Virginia Administrative Code*.

CTB Decision Brief

Proposed Limited Access Control Change (LACCs)

Route 28 (Centreville Road) Widening from South of Compton Road (Route 665) to South of Route 29 (Lee Highway)

Fairfax County

June 17, 2020

Page 3 of 3

**Recommendations:** It is recommended, pursuant to §33.2-401 of the *Code of Virginia*, and Title 24, Agency 30, Chapter 401 of the *Virginia Administrative Code*, that Route 28 (Centreville Road) from 0.12 mile north of Fairfax-Prince William County Line to 0.10 mile south of the intersection of U.S. Route 29 (Lee Highway) in Fairfax County continue to be designated as a Limited Access Highway with the LACCs modified and/or established as shown on the Limited Access Line Exhibits and the Limited Access Control Point Stations and Offset Table (attached).

**Action Required by CTB:** The *Code of Virginia* §33.2-401 and Title 24, Agency 30, Chapter 401 of the *Virginia Administrative Code* require a majority vote of the CTB to approve the recommended LACCs. The CTB will be presented with a resolution for a formal vote to approve the LACCs for the proposed Project and to provide the Commissioner of Highways the requisite authority to execute all documents necessary to implement the LACCs.

**Result, if Approved:** The Commissioner of Highways will be authorized to execute any and all documents needed to comply with the resolution, and the Route 28 Widening Project will move forward.

**Options:** Approve, Deny, or Defer.

**Public Comments/Reactions:** Forty-nine (49) citizens attended the Design Public Hearing. Four (4) written comments and nineteen (19) oral comments (from the citizens that spoke at the Public Hearing presentation) were received for the record. None of the comments offered a position for the project.



# COMMONWEALTH of VIRGINIA

## DEPARTMENT OF TRANSPORTATION

Stephen C. Brich, P.E.  
Commissioner

1401 East Broad Street  
Richmond, Virginia 23219

(804) 786-2701  
Fax: (804) 786-2940

June 1, 2020

The Honorable Shannon Valentine  
The Honorable Stephen C. Brich, P. E.  
The Honorable Jennifer Mitchell  
The Honorable Jerry L. Stinson II  
The Honorable Mary Hughes Hynes  
The Honorable Allison DeTuncq  
The Honorable Bert Dodson, Jr.  
The Honorable W. Sheppard Miller III  
The Honorable Carlos M. Brown  
The Honorable Cedric Bernard Rucker  
The Honorable Stephen A. Johnsen  
The Honorable F. Dixon Whitworth, Jr.  
The Honorable E. Scott Kasprowicz  
The Honorable Raymond D. Smoot, Jr.  
The Honorable Marty Williams  
The Honorable John Malbon  
The Honorable Greg Yates

Subject: Approval of Limited Access Control Changes (LACCs) for Route 28 (Centreville Road) Widening from South of Compton Road (Route 665) to South of Route 29 (Lee Highway) in Fairfax County.

Dear Commonwealth Transportation Board Members:

The Department has initiated the above request for LACCs for your consideration. The proposed LACCs on Fairfax County Department of Transportation Project 2G40-100-000; State Highway Project 0028-029-269, P101, R201, C501 have been determined as a necessary design feature and recommended for approval by the Department's staff.

I have reviewed the staff's recommendations and determined that approving these LACC's will not adversely affect the safety or operations of the affected highway network. I have determined that this request should be considered by the Board.

Sincerely,

Barton A. Thrasher, P.E.  
Chief Engineer

## AGENDA

### MEETING OF THE COMMONWEALTH TRANSPORTATION BOARD Culpeper, Virginia April 21, 1988 10:00 A.M.

Moved by Mr. Guiffre, seconded by Hr. Musselwhlte, that

**WHEREAS**, in connection with Route 28, State Highway Project 0028-029-106, RW-202, the Commonwealth acquired limited access rights and right of way from J. M. Hurst and Victoria J. Hurst by deed dated April 28, 1986, recorded in Deed Book 6364, Page 1712 in the Office of the Clerk of the Circuit Court of Fairfax County; and

**WHEREAS**, a 50-foot break was allowed in the limited access, the center of which was located opposite approximate Station 466+39.42 (SBL centerline) for a private driveway; and

**WHEREAS**, upon the construction of the roadway, the grade was changed by 17 feet making entry to this driveway impossible; and

**WHEREAS**, at a later date, it was determined that the lands, so acquired, would be more suitable for the driveway; and

**WHEREAS**, the plans have been revised to reflect a proposed shift in the limited access break approximately 95 feet south of the original location; and

**WHEREAS**, it is also necessary to release by deed to Glenn Barker Poe and Doris Ann Poe the limited access rights between approximate Station 494+95 and approximate Station 495+45, left: and

**WHEREAS**, the Commonwealth Transportation Commissioner has certified in writing that the limited access rights and the excess lends lying northwest of and adjacent to the northwest normal right of way limits of Route 28, from a point approximately 60 feet left of approximate Station 464+84 (Route 28 SBL centerline) to a point approximately 69 feet left of approximate Station 466+14 (Route 28 SBL centerline), containing 0.5311 acre, more or less , does not constitute a section of the public road and is deemed by him no longer necessary for the uses of the State Highway System.

**NOW, THEREFORE**, in accordance with the provisions of Section 33.1- 149 of the Code of Virginia ( 1950 ) , as amended , the conveyance of the limited access rights and excess land , so certified, is approved and the Commonwealth Transportation Commissioner is hereby authorized to execute a deed without warranty conveying same for a consideration satisfactory to the State Right of Way Engineer , subject to such restrictions and conditions as may be deemed requisite.

Motion carried.



**MINUTES  
OF  
MEETING OF STATE HIGHWAY AND TRANSPORTATION COMMISSION  
Richmond, Virginia**

**July 19, 1984**

Moved by Mr. Guiffre, seconded by Mr. Humphreys, that

**WHEREAS**, in accordance with the provisions of Section 128 of Title 23 - Highways, United States Code, and FHPM 7-7-5, a Location and Design Public Hearing was held in the London Towne Elementary School, Centreville, Virginia, on August 24, 1983, at 8:00 p.m., for the purpose of considering the proposed location and major design features of State Route 28 (Centreville Road) from 0.12 mile north of Fairfax-Prince William County Line to 0.10 mile south of the intersection of U. S. Route 29 (Lee Highway) in Fairfax County, State Project 0028-029-106, C-502; Federal F-107-1( ), and

**WHEREAS**, proper notice was given in advance and all those present were given a full opportunity to express their opinions and recommendations for or against the proposed project as presented, and their statements being duly recorded, and

**WHEREAS**, the economic, social and environmental effects of the proposed project have been examined and given proper consideration, and this evidence, along with all other, has been carefully reviewed, and

**NOW, THEREFORE, BE IT RESOLVED**, that the locations and major design features of this project be approved in accordance with the plan as proposed and presented at the said Location and Design Public Hearing by the Department's Engineers, and

**BE IT FURTHER RESOLVED**, that State Route 28, Project 0028-029-106, C-502 be designated as a Limited Access Highway in accordance with Article 4, Chapter 1, Title 33.1 of the 1950 Code of Virginia and in accordance with Article 4, Chapter 1, Title 33.1 of the Code of Virginia and in accordance with State Highway and Transportation Commission Policy, and

**BE IT FURTHER RESOLVED**, that access points along this limited access facility be established after completion of a joint study by officials from Fairfax County and the Department.

Motion carried.



# County of Fairfax, Virginia

To protect and enrich the quality of life for the people, neighborhoods and diverse communities of Fairfax County

February 12, 2020

Ms. Helen L. Cuervo, P.E.  
District Administrator  
Northern Virginia District  
Virginia Department of Transportation  
4975 Alliance Drive  
Fairfax, Virginia 22030

Subject: Board Endorsement of Route 28 Limited Access Control Change (LACC)  
UPC 108720

Dear Ms. Cuervo:

On February 11, 2020, the Fairfax County Board of Supervisors endorsed the proposed Limited Access Control Change for Route 28, which provides for:

- Elimination of seven existing breaks in the Limited Access line
- Correction of existing errors in the Limited Access line
- Adjustment of the Limited Access line to the existing Route 28 right-of-way

The proposed Limited Access Control Change was presented at the September 23, 2019, Design Public Hearing.

FCDOT's Route 28 project will maintain all existing intersections and driveway accesses to Route 28 and will not add any new intersections or driveway access.

Please call Jim Beall at (703) 877-5673, if you have any questions or need additional information. Thank you for your assistance with this important project.

Sincerely,

Tom Biesiadny  
Director

cc: Board of Supervisors  
Bryan J. Hill, County Executive  
Rachel Flynn, Deputy County Executive

---

Fairfax County Department of Transportation  
4050 Legato Road, Suite 400  
Fairfax, VA 22033-2895  
Phone: (703) 877-5600 TTY: 711  
Fax: (703) 877-5723  
[www.fairfaxcounty.gov/fcdot](http://www.fairfaxcounty.gov/fcdot)



Ms. Helen L. Cuervo, P.E.  
February 11, 2020  
Page 2 of 2

Rhoderick Undan, Virginia Department of Transportation (VDOT)  
W. Todd Minnix, Chief, Transportation Design Division, FCDOT  
Jim Beall, Section Chief, FCDOT



# County of Fairfax, Virginia

To protect and enrich the quality of life for the people, neighborhoods and diverse communities of Fairfax County

February 12, 2020

Ms. Helen L. Cuervo, P.E.  
District Administrator  
Northern Virginia District  
Virginia Department of Transportation  
4975 Alliance Drive  
Fairfax, Virginia 22030

Subject: Board Endorsement of Route 28 (Centreville Road) Widening Project from the Prince William County/ Fairfax County line to Route 29, UPC 108720

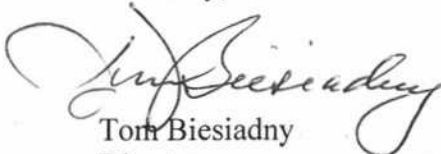
Dear Ms. Cuervo: *Helen*

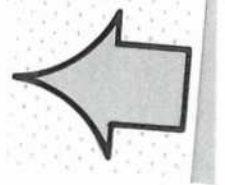
On February 11, 2020, the Fairfax County Board of Supervisors endorsed the design plans to widen 2.3 miles of Route 28 (Centreville Road) between the Prince William County/ Fairfax County line and Route 29 from four to six lanes with shared use paths for pedestrians and bicyclists, as generally presented at the September 23, 2019, Design Public Hearing.

The plans presented at the September 23, 2019, Design Public Hearing provided a six-foot curb abutted concrete sidewalk (in lieu of a ten foot shared use path) on the southbound roadway between Machen Road and Upperridge Drive (approximate Stations 211+00 to 224+00), in order to avoid impacts to the adjacent properties. The public had no comments on the sidewalk, either at the hearing or during the 15-day comment period following the hearing. FCDOT has since revised the plans to provide an eight-foot asphalt curb abutted sidewalk in this location, which will be consistent, to the maximum extent possible, with the shared use path on the rest of the project. Since this eight-foot asphalt sidewalk does not meet VDOT standards for a SUP, the County will be required to maintain this 1,200-foot-long section. The remainder of both SUPs will be maintained by VDOT.

Please call Jim Beall at (703) 877-5673, if you have any questions or need additional information. Thank you for your assistance with this important project.

Sincerely,

  
Tom Biesiadny  
Director



Ms. Helen L. Cuervo, P.E.  
February 11, 2020  
Page 2 of 2

cc: Board of Supervisors

Bryan J. Hill, County Executive

Rachel Flynn, Deputy County Executive

Rhoderick Undan, Virginia Department of Transportation (VDOT)

W. Todd Minnix, Chief, Transportation Design Division, FCDOT

Jim Beall, Section Chief, FCDOT

Proposed Limited Access Location			
Begin Station		End Station	
Sta		to Sta	
301+04.87 (Compton Rd)	N 6979872.08 E 11782178.30 OFF 37.4168	136+52.00	N 6980950.70 E 11782760.84 OFF -103.5624
133+35.55	N 6980558.26 E 11782808.80 OFF 133.4382	133+85.55	N 6980601.62 E 11782833.70 OFF 133.4381
137+85.73	N 6981066.67 E 11782827.43 OFF -103.5627	138+35.73	N 6981110.04 E 11782852.32 OFF -103.5628
138+55.40	N 6981008.90 E 11783067.98 OFF 133.8152	140+29.55	N 6981157.62 E 11783158.70 OFF 138.4368
143+99.56	N 6981602.32 E 11783127.29 OFF -110.2305	144+49.56	N 6981643.60 E 11783155.80 OFF -106.0640
156+99.55	N 6982605.87 E 11783990.25 OFF 138.4336	157+49.55	N 6982649.24 E 11784015.14 OFF 138.4335
157+19.37	N 6982736.54 E 11783802.49 OFF -89.46	159+19.41	N 6982910.07 E 11783902.09 OFF -89.46
160+39.56	N 6983014.21 E 11783961.92 OFF -89.46	167+60.85	N 6983639.72 E 11784321.07 OFF -89.46
167+86.02	N 6983661.55 E 11784333.60 OFF -89.46	176+94.94	N 6984439.36 E 11784804.34 OFF -68.52
176+44.55	N 6984297.59 E 11784950.05 OFF 128.4298	176+95.35	N 6984341.64 E 11784975.34 OFF 128.4298
179+40.52	N 6984652.30 E 11784926.67 OFF -68.46	195+39.04	N 6986057.50 E 11785689.64 OFF -106.5000
185+17.55	N 6985057.16 E 11785380.41 OFF 123.4282	185+67.55	N 6985100.52 E 11785405.30 OFF 123.4281
194+34.55	N 6985825.01 E 11785884.71 OFF 178.4264	195+69.37	N 6985964.24 E 11785912.97 OFF 133.6087
198+62.06	N 6986224.91 E 11786046.78 OFF 119.8562	200+30.20	N 6986376.40 E 11786120.63 OFF 108.4710
206+23.86	N 6986986.15 E 11786250.52 OFF -82.50	207+40.82	N 6987088.80 E 11786307.04 OFF -84.60
209+20.12	N 6987246.98 E 11786391.62 OFF -90.00	223+21.15	N 6988473.01 E 11786988.43 OFF -86.16
221+17.74	N 6988227.52 E 11787133.11 OFF 111.1190	222+32.77	N 6988344.68 E 11787170.96 OFF 117.9081

Existing Limited Access Abandonment			
Begin Station		End Station	
Sta		to Sta	
301+04.87 (Compton Rd)	N 6979864.82 E 11782169.79 OFF 26.2305	136+52.00	N 6980950.70 E 11782760.84 OFF -103.5624
137+55.52	N 6981066.67 E 11783004.91 OFF 118.4374	137+91.16	N 6980960.85 E 11783022.66 OFF 118.4373
138+41.16	N 6980996.74 E 11783060.56 OFF 133.4372	140+29.55	N 6981157.62 E 11783158.70 OFF 138.4368
157+19.37	N 6982736.54 E 11783802.49 OFF -89.46	159+29.56	N 6982908.41 E 11783925.26 OFF -68.5668
160+29.56	N 6982995.13 E 11783975.05 OFF -68.5670	176+94.94	N 6984439.36 E 11784804.34 OFF -68.52
179+40.52	N 6984652.3024 E 11784926.67 OFF -68.46	182+28.07	N 6984901.72 E 11785069.76 OFF -68.57
182+78.07	N 6984945.08 E 11785094.65 OFF -68.5714	194+29.56	N 6985956.12 E 11785646.34 OFF -93.5736
195+23.21	N 6985901.90 E 11785928.85 OFF 178.4262	195+69.37	N 6985964.24 E 11785912.97 OFF 133.6087
195+79.56	N 6986101.14 E 11785695.01 OFF -123.5739	197+21.01	N 6981066.67 E 11785750.64 OFF -140.6469
196+91.73	N 6986068.76 E 11785976.66 OFF 136.8026	200+30.20	N 6986376.40 E 11786120.63 OFF 108.4710
206+23.86	N 6986986.15 E 11786250.52 OFF -82.50	208+04.56	N 6987136.09 E 11786352.67 OFF -68.5763
208+54.56	N 6987179.45 E 11786377.57 OFF -68.5764	215+64.79	N 6987795.38 E 11786731.21 OFF -68.5777
221+17.74	N 6988227.52 E 11787133.11 OFF 111.1190	222+32.77	N 6988344.68 E 11787170.96 OFF 117.9081

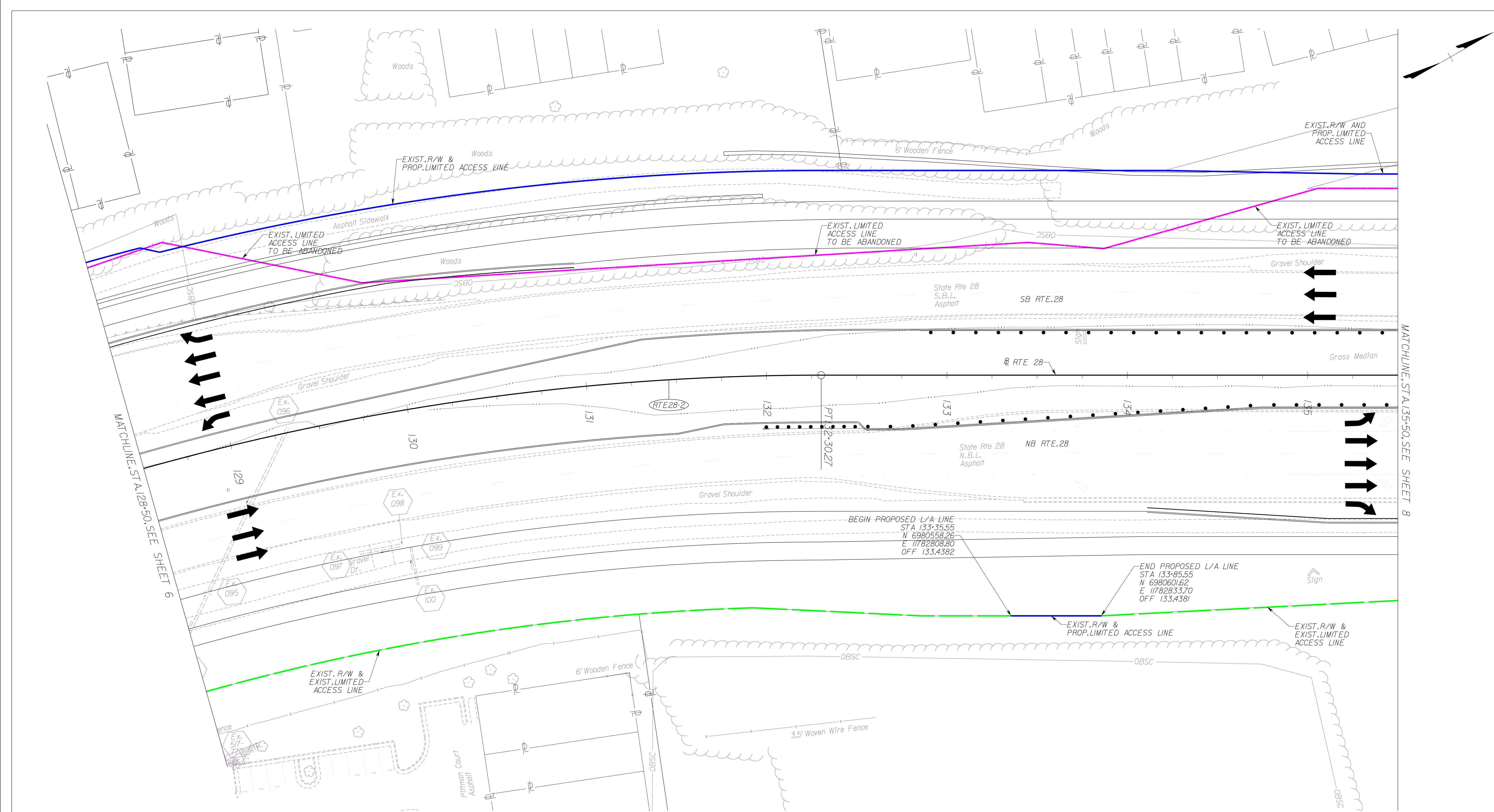
Route 28 Widening South of Compton Road to South of Route 29

VDOT Project 0028-029-269, P101, R201, C501, UPC 108720





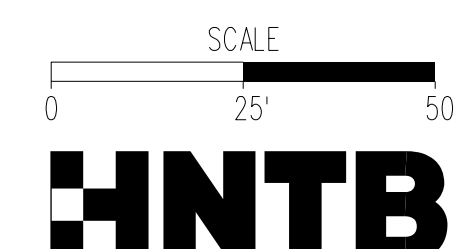




**LEGEND**

	PROPOSED LIMITED ACCESS
	EXISTING LIMITED ACCESS
	EXISTING RIGHT OF WAY
	EXISTING LIMITED ACCESS TO BE ABANDONED

THESE PLANS ARE UNFINISHED AND UNAPPROVED AND ARE NOT TO BE USED FOR ANY TYPE OF CONSTRUCTION OR THE ACQUISITION OF RIGHT OF WAY.

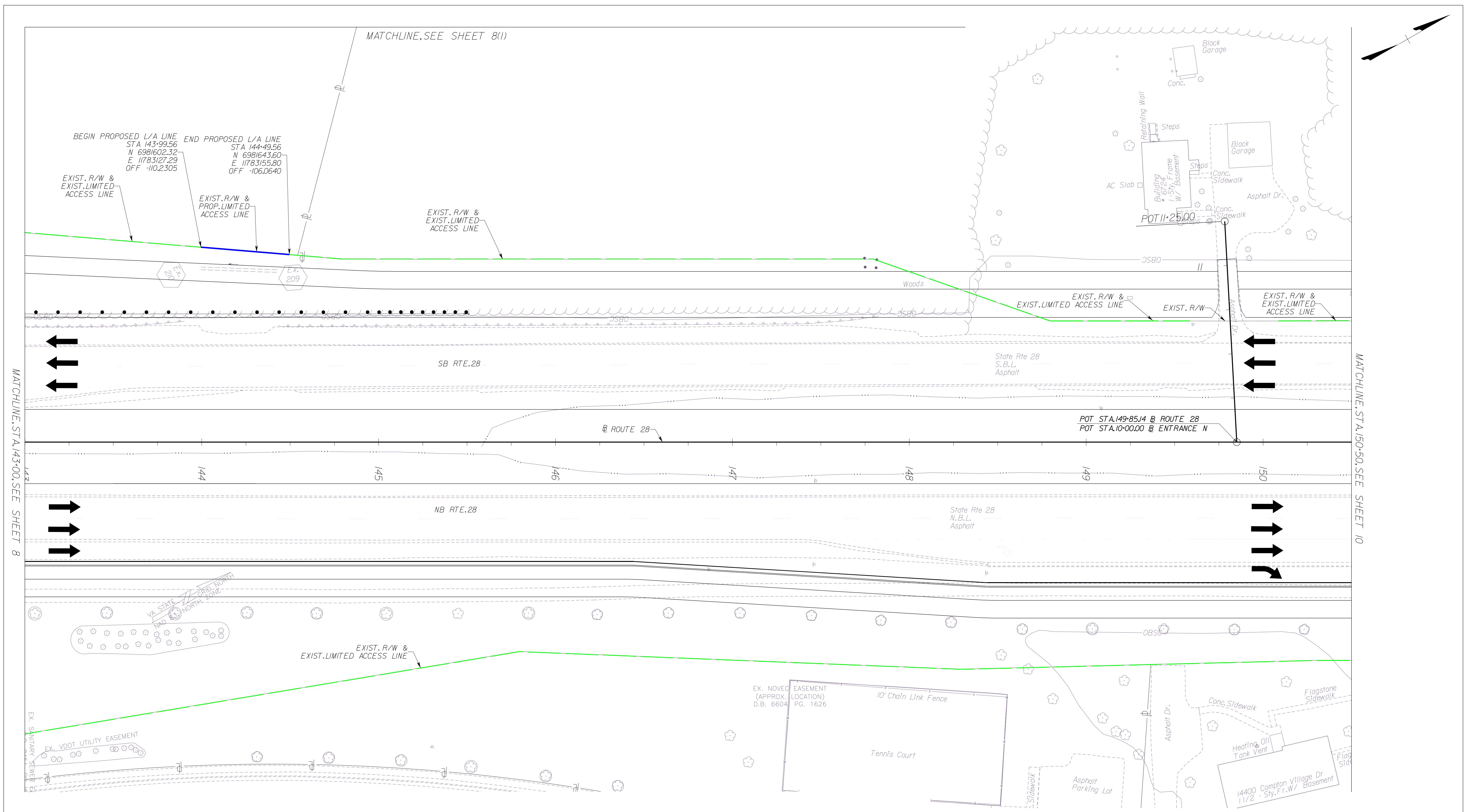


EMERGENCY POLICE - FIRE - RESCUE 911 FAIRFAX COUNTY, VIRGINIA DEPARTMENT OF PUBLIC WORKS AND ENVIRONMENTAL SERVICES UTILITIES DESIGN & CONSTRUCTION DIVISION 12000 GOVERNMENT CENTER PARKWAY, SUITE 463 FAIRFAX, VA., 22035-0052				
OFFICE OF CAPITAL FACILITIES 703-324-5800				
ROUTE 28 WIDENING PRINCE WILLIAM CO. LINE TO ROUTE 29 LIMITED ACCESS EXHIBIT STA. 128+50.00 TO STA. 1354+50.00				
CONTRACT NO.		PROJECT NO.		
SCALE	DESIGNED BY: TW	TW	SHEET	
	DRAFTED BY: DB	DB	7	
	CHECKED BY: SDF	SDF		
FUND #				





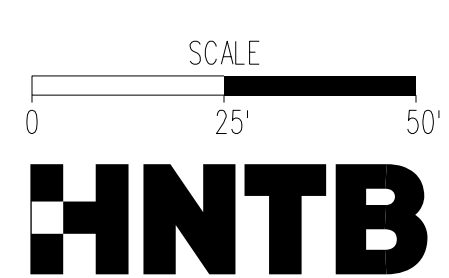




**LEGEND**

- PROPOSED LIMITED ACCESS
- - - - - EXISTING LIMITED ACCESS
- - - - - EXISTING RIGHT OF WAY
- - - - - EXISTING LIMITED ACCESS TO BE ABANDONED

THESE PLANS ARE UNFINISHED AND UNAPPROVED AND ARE NOT TO BE USED FOR ANY TYPE OF CONSTRUCTION OR THE ACQUISITION OF RIGHT OF WAY.



**EMERGENCY POLICE - FIRE - RESCUE 911**  
**FAIRFAX COUNTY, VIRGINIA**  
 DEPARTMENT OF PUBLIC WORKS AND ENVIRONMENTAL SERVICES  
 UTILITIES DESIGN & CONSTRUCTION DIVISION  
 12000 GOVERNMENT CENTER PARKWAY, SUITE 463 FAIRFAX, VA., 22035-0052

OFFICE OF CAPITAL FACILITIES 703-324-5800	
ROUTE 28 WIDENING PRINCE WILLIAM CO. LINE TO ROUTE 29 LIMITED ACCESS EXHIBIT STA. 143+00.00 TO STA. 150+50.00	
CONTRACT NO.	PROJECT NO.
SCALE	DESIGNED BY: TW DRAFTED BY: DB CHECKED BY: SDF
SHEET	9
FUND #	

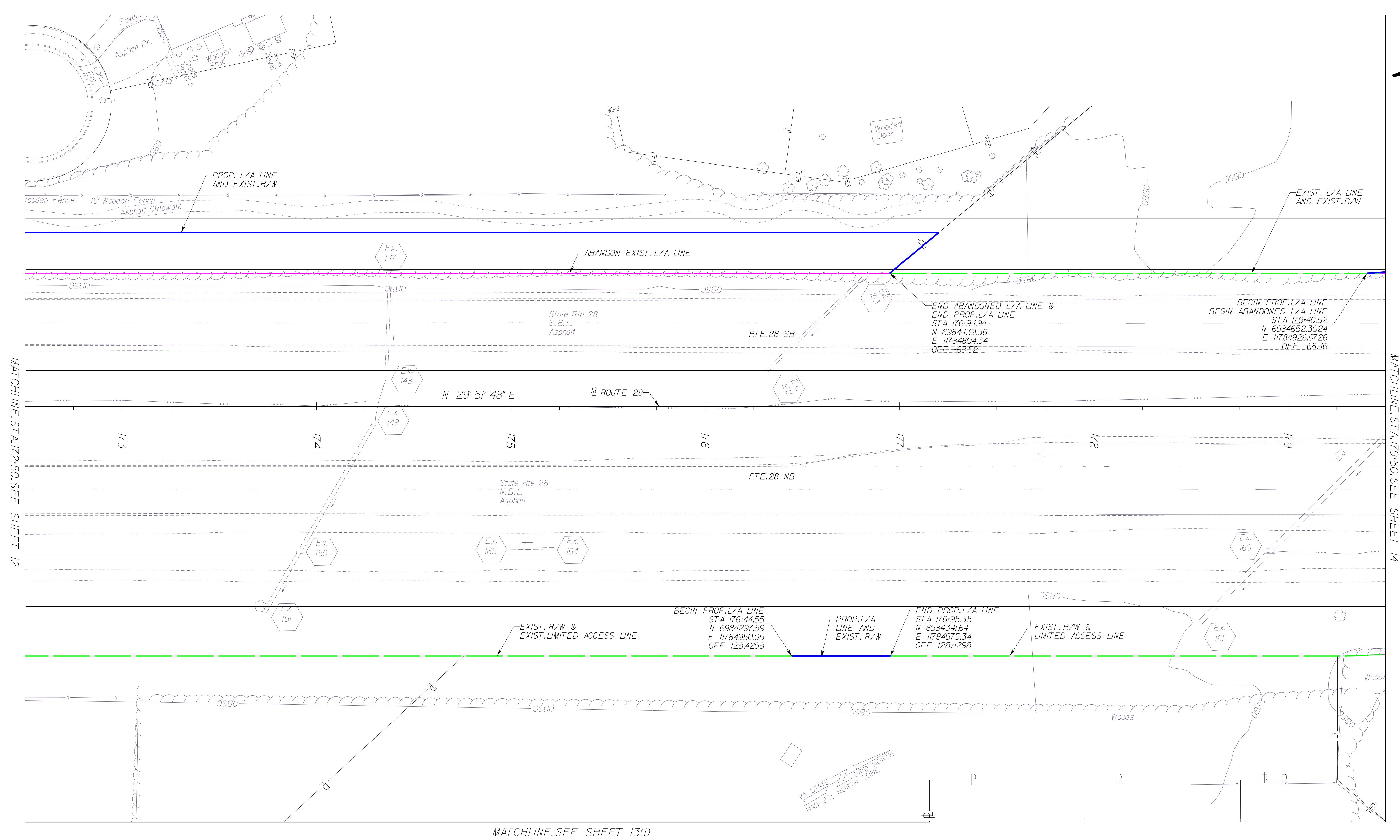












MATCHLINE, STA. 172+50, SEE SHEET 12

MATCHLINE, STA. 179+50, SEE SHEET 14

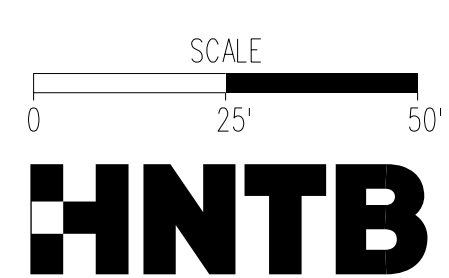
MATCHLINE, SEE SHEET 13(1)

VA STATE GRID NORTH  
NAD 83, NORTH ZONE

**LEGEND**

<span style="color: blue;">———</span>	PROPOSED LIMITED ACCESS
<span style="color: green;">- - - - -</span>	EXISTING LIMITED ACCESS
<span style="color: red;">- - - - -</span>	EXISTING RIGHT OF WAY
<span style="color: magenta;">- - - - -</span>	EXISTING LIMITED ACCESS TO BE ABANDONED

THESE PLANS ARE UNFINISHED AND UNAPPROVED AND ARE NOT TO BE USED FOR ANY TYPE OF CONSTRUCTION OR THE ACQUISITION OF RIGHT OF WAY.

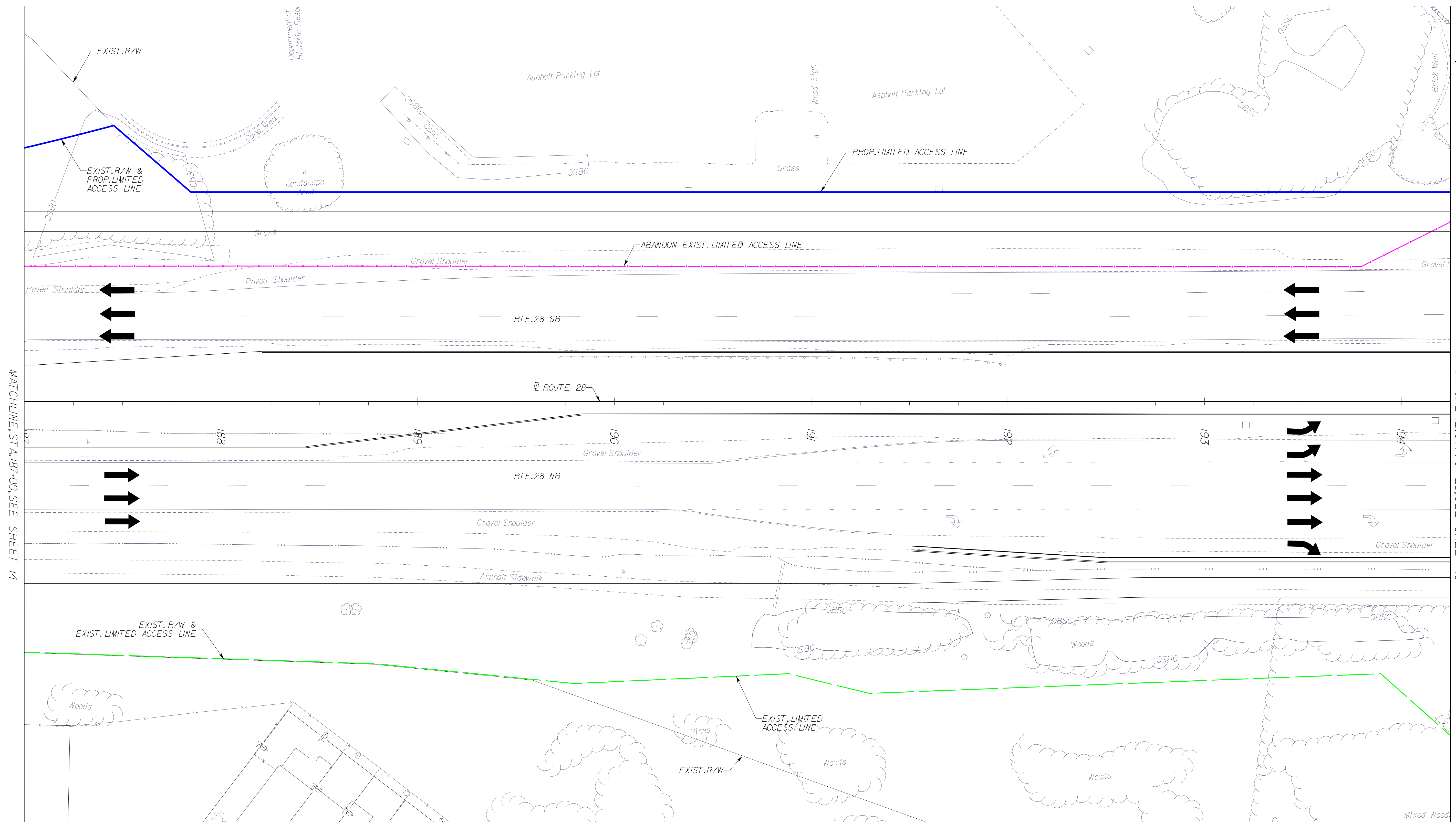


EMERGENCY POLICE - FIRE - RESCUE 911 FAIRFAX COUNTY, VIRGINIA DEPARTMENT OF PUBLIC WORKS AND ENVIRONMENTAL SERVICES UTILITIES DESIGN & CONSTRUCTION DIVISION 12000 GOVERNMENT CENTER PARKWAY, SUITE 463 FAIRFAX, VA., 22035-0052				
		OFFICE OF CAPITAL FACILITIES 703-324-5800		
		ROUTE 28 WIDENING PRINCE WILLIAM CO. LINE TO ROUTE 29 LIMITED ACCESS EXHIBIT STA. 172+50.00 TO STA. 179+50.00		
		CONTRACT NO. PROJECT NO.		
		SCALE DESIGNED BY: TW SHEET DRAFTED BY: DB 13 CHECKED BY: SDF		
		FUND #		
R	E	V	I	S
I	L	O	N	S
△#	DESCRIPTION	BY	APPROVED	DATE









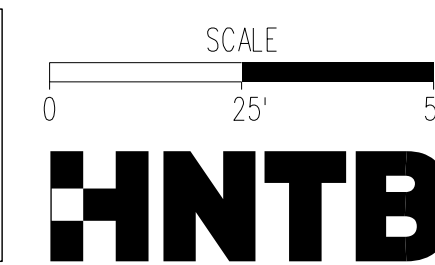
MATCHLINE, STA. 187+00, SEE SHEET 14

MATCHLINE, STA. 194+25, SEE SHEET 16

LEGEND

- PROPOSED LIMITED ACCESS
- - - - - EXISTING LIMITED ACCESS
- - - - - EXISTING RIGHT OF WAY
- - - - - EXISTING LIMITED ACCESS TO BE ABANDONED

THESE PLANS ARE UNFINISHED AND UNAPPROVED AND ARE NOT TO BE USED FOR ANY TYPE OF CONSTRUCTION OR THE ACQUISITION OF RIGHT OF WAY.



EMERGENCY POLICE - FIRE - RESCUE 911 FAIRFAX COUNTY, VIRGINIA DEPARTMENT OF PUBLIC WORKS AND ENVIRONMENTAL SERVICES UTILITIES DESIGN & CONSTRUCTION DIVISION 12000 GOVERNMENT CENTER PARKWAY, SUITE 463 FAIRFAX, VA., 22035-0052				
OFFICE OF CAPITAL FACILITIES 703-324-5800				
ROUTE 28 WIDENING PRINCE WILLIAM CO. LINE TO ROUTE 29 LIMITED ACCESS EXHIBIT STA. 187+00.00 TO STA. 194+25.00				
CONTRACT NO.		PROJECT NO.		
SCALE	DESIGNED BY: TW	TW	SHEET	
	DRAFTED BY: DB	DB	15	
	CHECKED BY: SDF	SDF	FUND #	

R				
E				
V				
I				
S				
I				
O				
N				
S	△#	DESCRIPTION	BY	APPROVED DATE

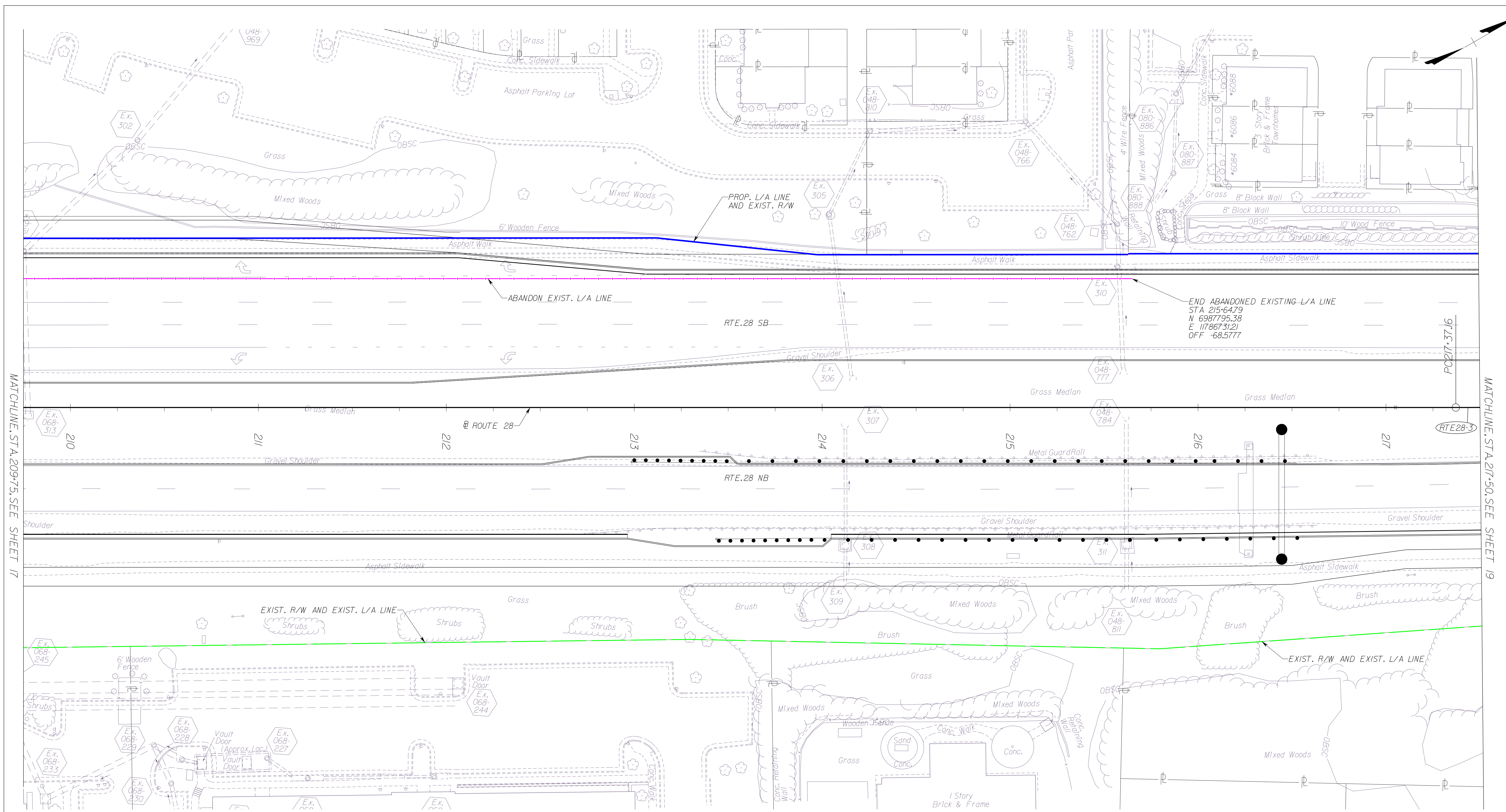












MATCHLINE, STA. 209+75, SEE SHEET 17

MATCHLINE, STA. 217+50, SEE SHEET 19

**LEGEND**

- PROPOSED LIMITED ACCESS
- EXISTING LIMITED ACCESS
- EXISTING RIGHT OF WAY
- EXISTING LIMITED ACCESS TO BE ABANDONED

THESE PLANS ARE UNFINISHED AND UNAPPROVED AND ARE NOT TO BE USED FOR ANY TYPE OF CONSTRUCTION OR THE ACQUISITION OF RIGHT OF WAY.



EMERGENCY POLICE - FIRE - RESCUE 911 FAIRFAX COUNTY, VIRGINIA DEPARTMENT OF PUBLIC WORKS AND ENVIRONMENTAL SERVICES UTILITIES DESIGN & CONSTRUCTION DIVISION 12000 GOVERNMENT CENTER PARKWAY, SUITE 463 FAIRFAX, VA., 22035-0052				
OFFICE OF CAPITAL FACILITIES 703-324-5800				
ROUTE 28 WIDENING PRINCE WILLIAM CO. LINE TO ROUTE 29 LIMITED ACCESS EXHIBIT STA. 209+75.00 TO STA. 217+50.00				
CONTRACT NO.		PROJECT NO.		
SCALE	DESIGNED BY: TW	DRAWN BY: DB	SHEET 18	
S	CHECKED BY: SDF			
R				
E				
V				
I				
S				
I				
O				
N				
S	△#	DESCRIPTION	BY	APPROVED DATE

FUND #

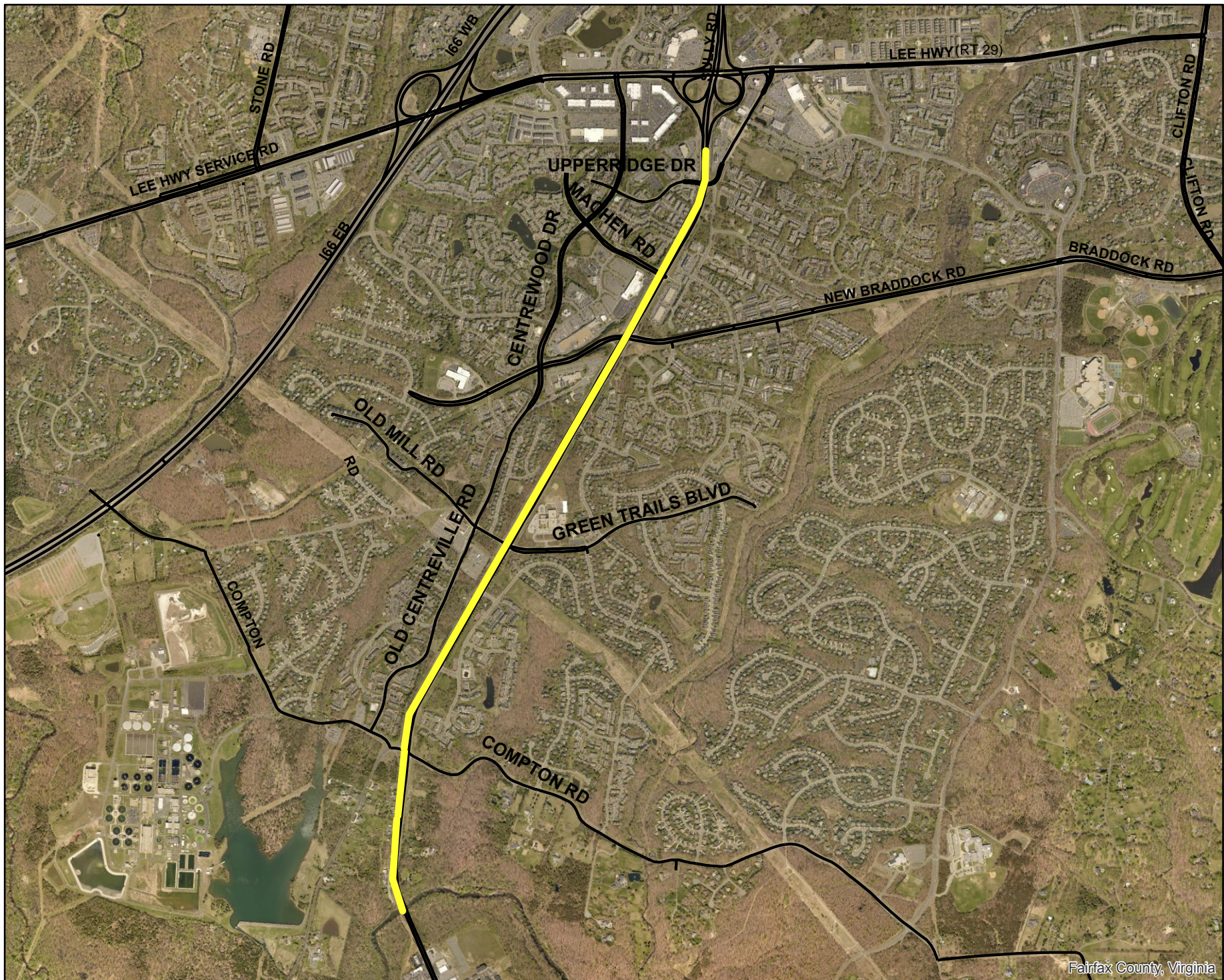












Fairfax County, Virginia

**ROUTE 28 WIDENING SOUTH OF COMPTON ROAD TO SOUTH OF ROUTE 29  
VDOT PROJECT 0028-029-269, PE101, R201, C501 UPC 108720**