



COMMONWEALTH of VIRGINIA

Commonwealth Transportation Board

Shannon Valentine
Chairperson

1401 East Broad Street
Richmond, Virginia 23219

(804) 786-2701
Fax: (804) 786-2940

Agenda item # 2

RESOLUTION OF THE COMMONWEALTH TRANSPORTATION BOARD

July 14, 2020

MOTION

Made By: Ms. Hynes, Seconded By: Mr. Rucker
Action: Motion Carried, Unanimously

Title: Limited Access Control Changes (LACCs) for Route 286 (Fairfax County Parkway) Widening and the Popes Head Road Interchange Fairfax County

WHEREAS, on July 16, 1987, the Commonwealth Transportation Board (CTB) designated the Springfield Bypass between Route 7 (near Dranesville) and U.S. Route 1 (near Fort Belvoir) as a Limited Access Highway; and

WHEREAS, the Springfield Bypass was renamed as the Fairfax County Parkway and designated Route 7100; and

WHEREAS, on February 15, 2012, the CTB approved the transfer of Route 7100 (Fairfax County Parkway) located in Fairfax County from the Secondary System of Highways to the Primary System of Highways; and

WHEREAS, on February 16, 2012 the Virginia Department of Transportation (VDOT) published a press release announcing that the CTB had renamed Route 7100, as Route 286; and

WHEREAS, State Highway Project 0286-029-259, P101, R201, C501, B621, B622, B623, B624, B625, B627, B628, B629, B630, B631, B632, D604, D605 (UPC# 107937) provides for the widening of Route 286 (Fairfax County Parkway) from four to six lanes

from 0.62 miles north of Route 29 (Lee Highway) to 0.15 miles south of Route 123 (Ox Road), improvements to the Route 123 (Ox Road) interchange, improvements to the Route 286 (Fairfax County Parkway)/Route 643 (Burke Centre Parkway) intersection, and to provide a continuous shared-use path along Route 286 (Fairfax County Parkway) by constructing missing segments within the areas designated as limited access from Route 643 (Burke Centre Parkway) to Route 123 (Ox Road). State Highway Project 0286-029-365, P101, R201, C501, B619, B620 (UPC# 111725) will construct an interchange at Popes Head Road and the future Shirley Gate Road extension (collectively, the “Project”); and

WHEREAS, the widening of Route 286 (Fairfax County Parkway) requires an adjustment to the limited access line on the northbound and southbound sides of Route 286 (Fairfax County Parkway) shown on the Limited Access Line Exhibits and the Limited Access Control Point Stations and Offsets (attached); and

WHEREAS, the VDOT held a Design Public Hearing (“Hearing”) for the Project, including the current and proposed locations of the limited access lines, on December 12, 2019, between 6:30 pm and 8:30 pm at James W. Robinson, Jr. Secondary School, 5035 Sideburn Road, Fairfax, Virginia 22032, and allowed public input to be collected concerning the request; and

WHEREAS, proper notice of the Hearing was given in advance, and all those present were given a full opportunity to express their opinions and recommendations for or against the Project as presented, their statements being duly recorded; and

WHEREAS, the economic, social and environmental effects of the Project have been duly examined and given proper consideration and this evidence, along with all other relevant evidence, has been carefully reviewed; and

WHEREAS, the VDOT Northern Virginia District Office has reviewed the Interchange Justification Report (IJR) and found that it adequately addresses the impacts from the Project and proposed LACCs, and recommended the IJR for approval on June 8, 2020; and the Deputy Chief Engineer approved the IJR on June 23, 2020; and

WHEREAS, the Project is in compliance with National Environmental Policy Act (NEPA) requirements and an Environmental Assessment was prepared under an agreement between the VDOT and the Federal Highway Administration and approved on November 14, 2019; and

WHEREAS, the Project is located within an 8-hour Ozone non-attainment area. Based on an air quality conformity review performed by VDOT in October 17, 2019, it was determined that the Project will not cause or contribute to a violation of any air quality standard, is compliant with all NEPA and transportation conformity requirements, and will not have an adverse impact on air quality; and

Resolution of the Board
Proposed Limited Access Control Change (LACCs)
Route 286 (Fairfax County Parkway) Widening and Popes Head Road Interchange
Fairfax County
July 14, 2020
Page 3 of 3

WHEREAS, the Project is in Fairfax County and is supported by a letter from the Director of the Fairfax County Department of Transportation dated April 17, 2020; and

WHEREAS, the Chief Engineer has determined that the proposed LACCs will not adversely affect the safety or operation of the highways; and

WHEREAS, the VDOT has reviewed the requested LACCs and determined that all are in compliance with §33.2-401 of the *Code of Virginia* and that the requirements of 24 VAC 30-401-20 have been met; and

WHEREAS, the VDOT recommends approval of the proposed LACCs as shown on the Limited Access Line Exhibits and the Limited Access Control Point Stations and Offsets (attached).

NOW, THEREFORE, BE IT RESOLVED, in accordance with §33.2-401 of the *Code of Virginia* and Title 24, Agency 30, Chapter 401 of the *Virginia Administrative Code*, that the CTB hereby finds and concurs in the determinations and recommendations of the VDOT made herein, and directs that the Route 286 (Fairfax County Parkway) continue to be designated as a limited access control area, with the boundaries of limited access control being modified from the current locations as shown on the Limited Access Line Exhibits and the Limited Access Control Point Stations and Offsets (attached).

BE IT FURTHER RESOLVED, that the location of the shared use path within the areas designated as limited access and its construction and maintenance, is approved as proposed and shown in the plans for the Project as presented to the public by the County of Fairfax, as the same may be modified during ongoing design review.

BE IT FURTHER RESOLVED, that pedestrians and bicyclists are authorized to use the shared use path within the areas designated as limited access along Route 286 (Fairfax County Parkway).

BE IT FURTHER RESOLVED, the Commissioner of Highways is authorized to take all actions and execute any and all documents necessary to implement such changes.

#####

CTB Decision Brief
Proposed Limited Access Control Changes (LACCs)
Route 286 (Fairfax County Parkway) Widening and the Popes Head Road Interchange
Project 0286-029-259, P101, R201, C501, B621, B622, B623, B624, B625, B627, B628, B629,
B630, B631, B632, D604, D605 (UPC# 107937);
Project 0286-029-365, P101, R201, C501, B619, B620 (UPC# 111725)
Fairfax County

Issues: The area designated as limited access previously approved for Route 286 (Fairfax County Parkway) needs to be modified to accommodate the widening of Route 286 (Fairfax County Parkway), improvements to the Route 123 (Ox Road) interchange, improvements to the Route 286 (Fairfax County Parkway)/Route 643 (Burke Centre Parkway) intersection, and to provide a continuous shared-use path along Route 286 (Fairfax County Parkway) by constructing missing segments within the areas designated as limited access from Route 643 (Burke Centre Parkway) to Route 123 (Ox Road). These changes require the approval of the Commonwealth Transportation Board (CTB) pursuant to §33.2-401 of the *Code of Virginia*, and Title 24, Agency 30, Chapter 401 of the *Virginia Administrative Code*.

Facts:

- Limited access control for the Springfield Bypass between Route 7 (near Dranesville) and U.S. Route 1 (near Fort Belvoir) was previously established by the CTB on July 16, 1987.
- The Springfield Bypass was renamed as the Fairfax County Parkway and designated Route 7100.
- Route 7100 (Fairfax County Parkway) was transferred from the Secondary System of Highways to the Primary System of Highways by the CTB on February 15, 2012.
- The Virginia Department of Transportation (VDOT) published a press release on February 16, 2012 announcing that the CTB had renamed Route 7100, as Route 286.
- State Highway Project 0286-029-259, P101, R201, C501, B621, B622, B623, B624, B625, B627, B628, B629, B630, B631, B632, D604, D605 (UPC# 107937) provides for the widening of Route 286 (Fairfax County Parkway) from four to six lanes from 0.62 miles north of Route 29 (Lee Highway) to 0.15 miles south of Route 123 (Ox Road), improvements to the Route 123 (Ox Road) interchange, improvements to the Route 286 (Fairfax County Parkway)/Route 643 (Burke Centre Parkway) intersection, and to provide a continuous shared-use path along Route 286 (Fairfax County Parkway) by constructing missing segments within the areas designated as limited access from Route 643 (Burke Centre Parkway) to Route 123 (Ox Road). State Highway Project 0286-029-365, P101, R201, C501, B619, B620 (UPC# 111725) will construct an interchange at Popes Head Road and the future Shirley Gate Road extension (collectively, the “Project”). These improvements will impact the existing limited access control lines, as shown on the Limited Access Line Exhibits and the Limited Access Control Point Stations and Offsets (attached).

CTB Decision Brief

Proposed Limited Access Control Changes (LACCs)

Route 286 (Fairfax County Parkway) Widening and Popes Head Road Interchange

Fairfax County

July 14, 2020

Page 2 of 3

- The VDOT held a Design Public Hearing (“Hearing”) for the Project, including the current and proposed locations of the limited access lines, on December 12, 2019, between 6:30 pm and 8:30 pm at James W. Robinson, Jr. Secondary School, 5035 Sideburn Road, Fairfax, Virginia 22032, and allowed public input to be collected concerning the request.
- Proper notice of the Hearing was given in advance, and all those present were given a full opportunity to express their opinions and recommendations for or against the Project as presented, their statements being duly recorded.
- The economic, social, and environmental effects of the Project have been duly examined and given proper consideration, and this evidence, along with all other relevant evidence, has been carefully reviewed.
- The VDOT Northern Virginia District Office has reviewed the Interchange Justification Report (IJR) and found that it adequately addresses the impacts from the Project and proposed LACCs. The District recommended the IJR for approval on June 8, 2020. The Deputy Chief Engineer approved the IJR on June 23, 2020.
- The Project is in compliance with National Environmental Policy Act (NEPA) requirements and an Environmental Assessment was prepared under an agreement between the VDOT and the Federal Highway Administration and approved on November 14, 2019.
- The Project is located within an 8-hour ozone non-attainment area. Based on an air quality conformity review performed by VDOT in October 17, 2019, it was determined that the project will not cause or contribute to a violation of any air quality standard, and is compliant with all NEPA and transportation conformity requirements, and will not have an adverse impact on air quality.
- The Project is in Fairfax County and is supported by a letter from the Director of the Fairfax County Department of Transportation dated April 17, 2020.
- The Chief Engineer has determined that the proposed LACCs will not adversely affect the safety or operation of the highways.
- The proposed LACCs are in compliance with §33.2-401 of the *Code of Virginia* and with the polices and requirements of the CTB contained in Title 24, Agency 30, Chapter 401 of the *Virginia Administrative Code*.

Recommendations: It is recommended, pursuant to §33.2-401 of the *Code of Virginia*, and Title 24, Agency 30, Chapter 401 of the *Virginia Administrative Code*, that Route 286 (Fairfax County

Parkway) continue to be designated as a Limited Access Highway with the limited access control lines modified and/or established as shown on the Limited Access Line Exhibits and the Limited Access Control Point Stations and Offsets (attached). This action will modify the limited access line and right of way previously approved by the CTB on July 16, 1987.

Action Required by CTB: The *Code of Virginia* §33.2-401 and Title 24, Agency 30, Chapter 401 of the *Virginia Administrative Code* require a majority vote of the CTB to approve the recommended LACCs. The CTB will be presented with a resolution for a formal vote to approve the LACCs for the Project and to provide the Commissioner of Highways the requisite authority to execute all documents necessary to implement the LACCs.

Result, if Approved: The Commissioner of Highways will be authorized to execute any and all documents needed to comply with the resolution, and the Route 286 (Fairfax County Parkway) Widening and Popes Head Road Interchange Project will move forward.

Options: Approve, Deny, or Defer.

Public Comments/Reactions: There were one hundred and fourteen (114) citizens that attended the meeting per the sign in sheets. A total of twenty-six (26) written/mailed comments and twenty-four (24) oral comments were received for the record.



COMMONWEALTH of VIRGINIA

Commonwealth Transportation Board

Sean T. Connaughton
Chairman

1401 East Broad Street - Policy Division - CTB Section - #1106
Richmond, Virginia 23219

(804) 786-1830
Fax: (804) 225-4700

Agenda item # 3

RESOLUTION OF THE COMMONWEALTH TRANSPORTATION BOARD

February 15, 2012

MOTION

Made By: Mr. Garczynski Seconded By: Mr. Koelemay

Action: Motion Carried, Unanimously

Title: Transfer of Selected Secondary Highways to Primary Highway System

WHEREAS, in accordance with Item 4.2.2 of the 2012 Virginia Department of Transportation Strategic Business Plan (the "Plan"), selected routes were reviewed for possible transfer from the Secondary System of Highways to the Primary System of Highways; and,

WHEREAS, the highways identified for the Plan's review were as follows: Route 3000, Prince William County Parkway located in Prince William County; Route 7100, Fairfax County Parkway located in Fairfax County; and, Route 7900, Franconia-Springfield Parkway located in Fairfax County; and,

WHEREAS, transfers of highways from the Secondary System of Highways to the Primary System of Highways by the Commonwealth Transportation Board are governed by §33.1-34.A, Code of Virginia, 1950, as amended, and Department Policy Memorandum (DPM) 8-1; and,

WHEREAS, Routes 3000, 7100 and 7900 each appear to have at least one section that meets many of the criteria laid out in DPM 8-1 for transfer to the Primary System of Highways; and ,

NOW, THEREFORE, BE IT RESOLVED, pursuant to § 33.1-34(A), Code of Virginia, this Board hereby orders the transfer of the below listed segments of Route 3000, Route 7100 and Route 7900, a combined distance of less than 50 miles, from the Secondary System of Highways to the Primary System of Highways.

Fairfax County - Route 7100 – Fairfax County Parkway

CTB Transfers to Primary System:

From: Route 1 to Routes 617 & 877	2.80 Mi.
From: Route 7900 @ Rolling Road to 0.19 Mi. West Ramp from Route 636, Hoes Road	2.56 Mi.
From: 0.12 Mi. Southeast Ramp from Route 123 to Ramps To & From Route 267	14.60 Mi.
From: 0.04 Mi. So. Ramps to & From Spring Street to Route 6220 @ Route 7	4.0 Mi.
From: 0.19 Mi. West Ramp From Route 636, Hoes Road To 0.12 Mi. Southeast Ramp from Route 123	4.71 Mi.
From: Ramps To & From Route 267 to 0.04 Mi. So. Ramps To & From Spring Street	0.24 Mi.
From: Route 877 to Route 617, approximately	0.30 Mi.
Approximate Mileage For CTB Transfers:	29.21 Mi.

Fairfax County - Route 7900 – Franconia-Springfield Parkway

CTB Transfers to Primary System:

From: Route 7100 @ Rolling Road to 0.47 Mi. East Bonnie Mill Lane	1.72 Mi.
From: 0.32 Mi. West Frontier Drive Ramps to Frontier Dr.	0.50 Mi.
From: Frontier Drive to Route 613 – Beulah Road	0.86 Mi.
From: 0.47 Mi. East Bonnie Mill Lane to 0.32 Mi. West Frontier Drive Ramps	0.60 Mi.
Approximate Mileage for CTB Transfers to Primary System	3.68 Mi.

Prince William County - Route 3000 – Prince William Parkway

CTB Transfers to Primary System:

From: Route 234 to SCL Manassas @ Hastings Drive	1.89 Mi.
From: Liberia Drive & Wellington Road @ ECL Manassas to To Route 1	14.02 Mi.
Approximate Mileage for CTB Transfers to Primary System	15.91 Mi.

Total Approximate Mileage for Transfer to Primary System by CTB in 2012: 48.80 Mi.



COMMONWEALTH of VIRGINIA

DEPARTMENT OF TRANSPORTATION

Stephen C. Brich, P.E.
Commissioner

1401 East Broad Street
Richmond, Virginia 23219

(804) 786-2701
Fax: (804) 786-2940

July 1, 2020

The Honorable Shannon Valentine
The Honorable Stephen C. Brich, P. E.
The Honorable Jennifer Mitchell
The Honorable Jerry L. Stinson
The Honorable Mary Hughes Hynes
The Honorable Allison DeTuncq
The Honorable Bert Dodson, Jr.
The Honorable W. Sheppard Miller III
The Honorable Carlos M. Brown
The Honorable Cedric Bernard Rucker
The Honorable Stephen A. Johnsen
The Honorable F. Dixon Whitworth, Jr.
The Honorable E. Scott Kasprovicz
The Honorable Raymond D. Smoot, Jr.
The Honorable Marty Williams
The Honorable John Malbon
The Honorable Greg Yates

Subject: Approval of Limited Access Control Changes (LACCs) for the Route 286 (Fairfax County Parkway) Widening and Popes Head Road Interchange projects in Fairfax County.

Dear Commonwealth Transportation Board Members:

The Department has initiated the above request for LACCs for your consideration. The proposed LACCs on State Highway Projects 0286-029-259, P101, R201, C501, B621, B622, B623, B624, B625, B627, B628, B629, B630, B631, B632, D604, D605 and 0286-029-365, P101, R201, C501, B619, B620 have been determined as a necessary design feature and recommended for approval by the Department's staff.

I have reviewed the staff's recommendations and determined that approving these LACC's will not adversely affect the safety or operation of the affected highway network. I have determined that this request should be considered by the Board.

Sincerely,

Barton A. Thrasher, P.E.
Chief Engineer



County of Fairfax, Virginia

To protect and enrich the quality of life for the people, neighborhoods and diverse communities of Fairfax

April 17, 2020

Ms. Helen L. Cuervo, P.E.
District Administrator
Northern Virginia District
Virginia Department of Transportation
4975 Alliance Drive
Fairfax, Virginia 22030

Subject: Board of Supervisors Endorsement of Fairfax County Parkway Widening and
Popes Head Interchange, UPC 107937 and 111725

Dear Ms. Cuervo: *Helen*

On April 14, 2020, the Fairfax County Board of Supervisors endorsed the design plans to widen approximately 5.5 miles of the Fairfax County Parkway (Route 286) from four to six lanes between Ox Road (Route 123) and Lee Highway (U.S. 29), as presented at the December 12, 2020, public hearing. This multimodal project is intended to reduce congestion, improve safety, enhance traffic operations, and provide facilities for pedestrians and bicyclists. This project also includes a change in limited access control. It will be completed in three phases. The first phase is an interchange at Pope's Head Road; the second phase is the widening from U.S. 29 to Nomes Court; and the third phase is the widening from Nomes Court to Route 123.

Please call Nick Alexandrow at (703) 877-5754 or me at (703) 877-5663, if you have any questions or need additional information. Thank you for your assistance with this important project.

Sincerely,

Tom Biesiadny
Director

cc: Members, Board of Supervisors
Bryan J. Hill, County Executive
Rachel Flynn, Deputy County Executive
Sitaram Kodali, P.E., Project Manager, VDOT
Nicholas Roper, P.E., Project Development, VDOT
Andrew Beacher, Manager, Preliminary Engineering, VDOT

Fairfax County Department of Transportation
4050 Legato Road, Suite 400
Fairfax, VA 22033-2895
Phone: (703) 877-5600 TTY: 711
Fax: (703) 877-5723
www.fairfaxcounty.gov/fcdot



Ms. Helen Cuervo
April 17, 2020
Page 2 of 2

Eric M. Teitelman, Chief, Capital Projects and Traffic Engineering Division, FCDOT
Michael J. Guarino, Chief, Capital Projects Section, FCDOT
Tad Borkowski, Capital Projects Section, FCDOT
Nick Alexandrow, Capital Projects Section, FCDOT

Re: LACC UPC 107937 and 111725 - ROUTE 286
(FAIRFAX COUNTY PARKWAY) WIDENING & POPES
HEAD ROAD INTERCHANGE



Rogerson, George <george.rogerson@vdot.virginia.gov>

10:40 AM (4
minutes ago)

to Lori, Neil

Lori and Neil,

Thank you very much for your review and approval.

George
(804) 350-1571 (cell)

On Mon, Jun 8, 2020 at 10:30 AM Snider, Lori <lori.snider@vdot.virginia.gov> wrote:

I approve the proposed LACC from a right of way & utilities perspective.

Lori

On Mon, Jun 8, 2020, 10:02 AM Hord, Neil <neil.hord@vdot.virginia.gov> wrote:

Lori,

I have reviewed the attached project related LACC. It is for a shift in the limited access line to accommodate a shared use path. I recommend your approval from a right of way and utilities perspective. If you concur please reply back to George so that he can advance this item for the June CTB meeting. Thank you.

Neil

7/16/87

Moved by Mr. Guiffre, seconded by Mr. Beyer, that

WHEREAS, in accordance with the statutes of the Commonwealth of Virginia and policies of the Commonwealth Transportation Board, Design Public Hearings were held between October 7 and November 20, 1986 in various locations in Fairfax County for the purpose of considering the proposed design of the Springfield Bypass* from Route 7 (near Dranesville) to Route 1 (near Fort Belvoir), in Fairfax County, excluding a section from Intersection 66 to Braddock Road and including the proposed Franconia Spur between Rolling Road and Beulah Street, State Project R000-029-249, PE-103, PE-104, PE-105, PE-106; Federal Project M-5401(), and

WHEREAS, proper notice was given in advance and all those present were given a full opportunity to express their opinions and recommendations for or against the proposed project as presented, and their statements being duly recorded, and

WHEREAS, the economic, social and environmental effects of the proposed project have been examined and given proper consideration, and this evidence, along with all other, has been carefully reviewed.

NOW, THEREFORE, BE IT RESOLVED, that the major design features of this project be approved in accordance with the plan as proposed and presented at the said Design Public Hearing by the Department's engineers along alternatives that do not adversely impact Pope's Head Park, Burke Lake Park, South Run Park or Huntsman Park unless Federal approval is obtained with the following modifications:

* IKA FAIRFAX COUNTY PARKWAY
RTE. 7100

7/16/87

1. provide a grade separation with no access at Pinecrest Road,
2. provide an additional one way, northbound access only to the Fair Oaks Hospital,
3. eliminate access to Fairfax Station Road,
4. provide access for the extension of the Burke Center Parkway,
5. provide a grade separation with no access at Clara Barton Drive,
6. shift ramp alignment in the southwest quadrant of the Rolling Road interchange to reduce impacts on the adjacent community, and
7. provide minor adjustments where prudent and feasible to minimize or eliminate individual concerns; and

BE IT FURTHER RESOLVED, that the Springfield Bypass, in accordance with the statutes of the Commonwealth of Virginia and policies of the Commonwealth Transportation Board be designated as a limited access highway as presented at the said hearing with modifications as included herein.

Motion carried.

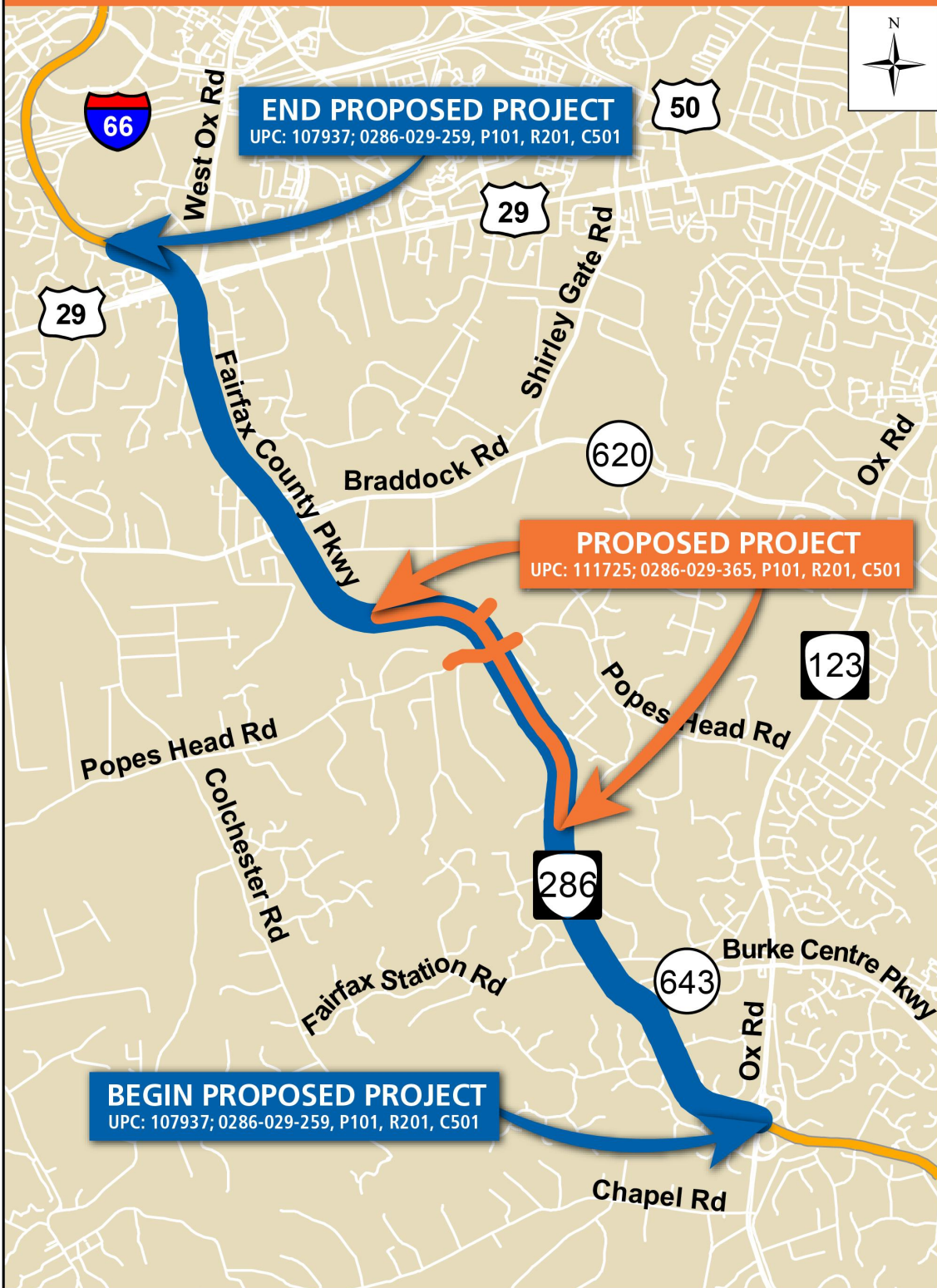
Moved by Mrs. Kincheloe, seconded by Mr. Bacon, that

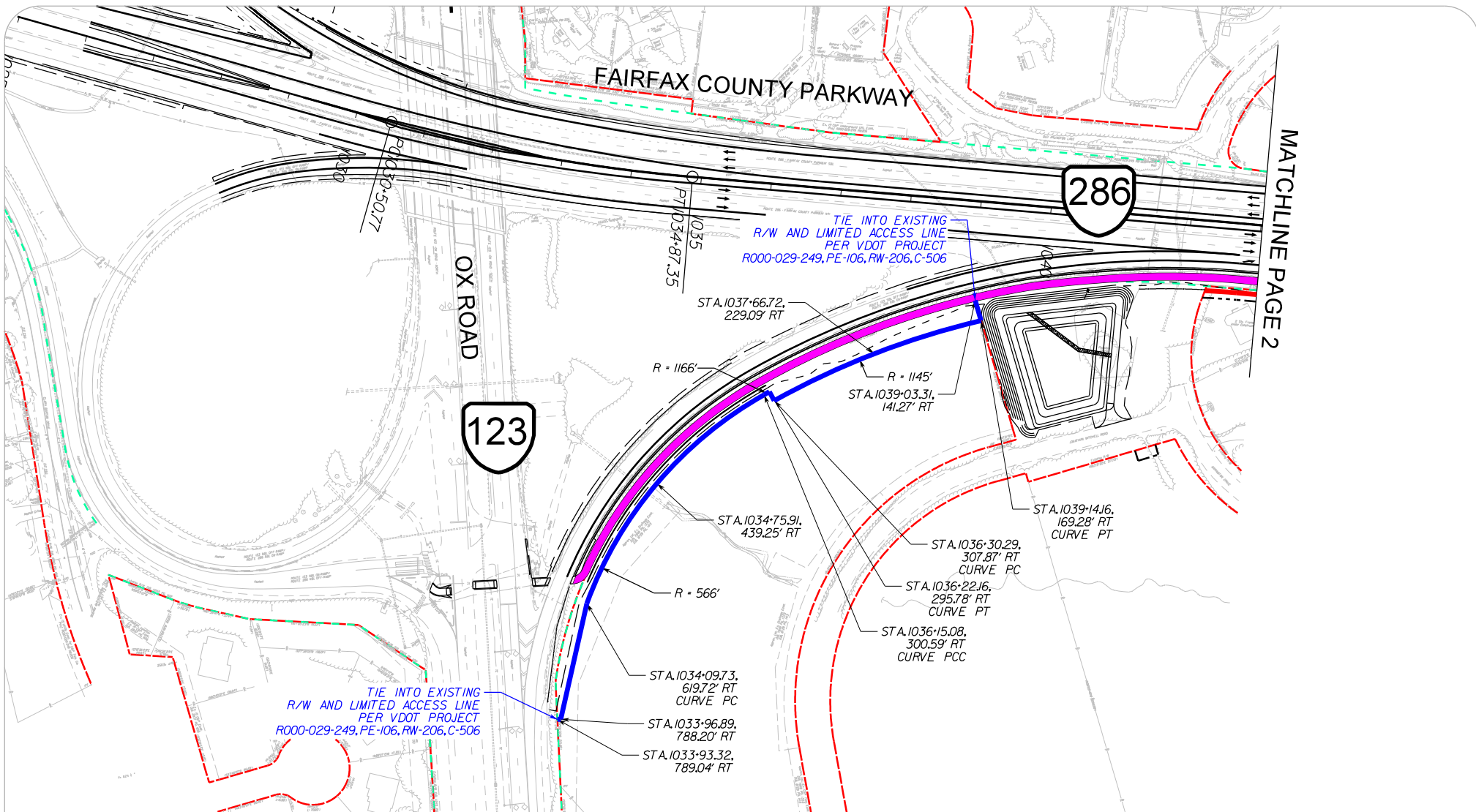
WHEREAS, under the authority of Section 33.1-62 of the Code of Virginia (1950), as amended, the Commonwealth Transportation Board is authorized to designate Virginia Byways as recommended by the Department of Conservation and Historic Resources after providing the opportunity for public hearings; and


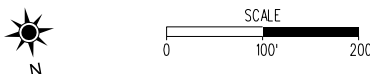
WHEREAS, the staffs of the Division of Parks and Recreation and the Virginia Department of Transportation have reviewed and determined that Routes 601, 676, and 614 in Albemarle County from U.S. Routes 29/250 to the Community of Owensville where Route 601 changes to 676 then to 614 and extends to the intersection with Route 810 at the Community of White Hall, substantially meets the adopted criteria for Virginia Byways; and

LOCATION MAP

Fairfax County

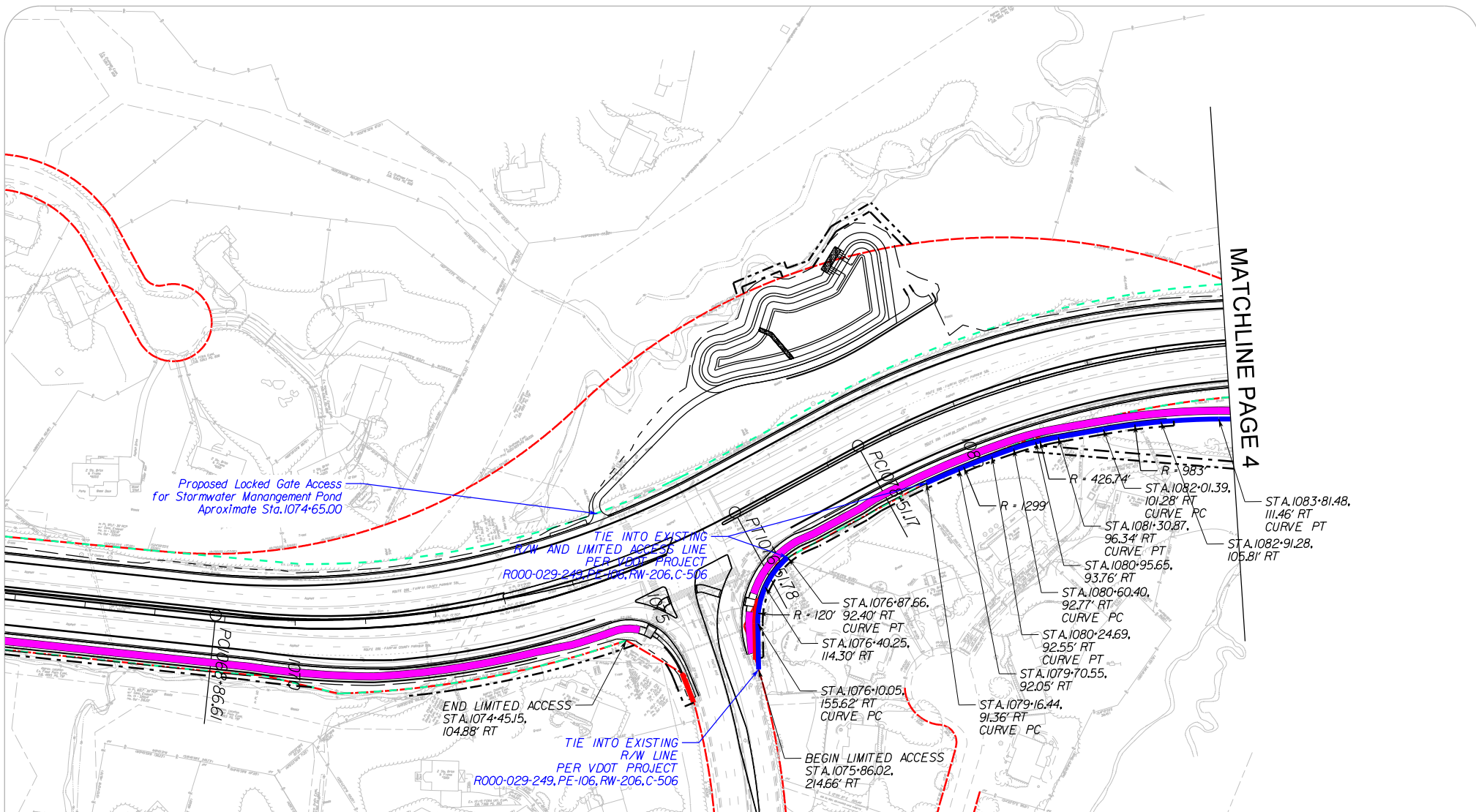




Notes	Legend	Project Location
<p>LIMITED ACCESS CONTROL MODIFICATIONS APPROVED BY THE COMMONWEALTH TRANSPORTATION BOARD BY RESOLUTION DATED July 16, 1987</p> <p>ALL STATIONS AND OFFSETS SHOWN ARE BASED ON THE RTE.286 CONSTRUCTION BASELINE.</p>	<ul style="list-style-type: none"> --- Exist. R/W & Limited Access Line --- Exist. Right of Way --- Exist. Limited Access Line --- Prop. R/W & Limited Access Line --- Prop. R/W --- Prop. Limited Access Line --- Prop. Fairfax County Parkway Trail --- Exist. Fairfax County Parkway Trail 	<p>Fairfax County</p>  <p>North Arrow and Scale</p> 
<p>Disclaimer</p> <p>These plans are unfinished and unapproved and are not to be used for any type of construction or the acquisition of Right of Way. Additional Easement for Right of Way may be required beyond the proposed right-of-way shown on these plans.</p>		



ROUTE 286 (FAIRFAX COUNTY PARKWAY)
 WIDENING AND POPES HEAD ROAD
 INTERCHANGE
 PAGE 1 OF 13



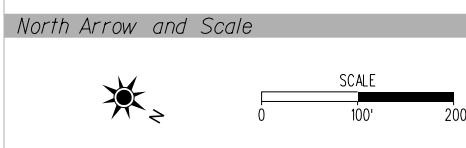
MATCHLINE PAGE 4

Notes **Legend** **Project Location**

LIMITED ACCESS CONTROL MODIFICATIONS APPROVED BY THE COMMONWEALTH TRANSPORTATION BOARD BY RESOLUTION DATED July 16, 1987

ALL STATIONS AND OFFSETS SHOWN ARE BASED ON THE RTE. 286 CONSTRUCTION BASELINE.

- Exist. R/W & Limited Access Line
- Exist. Right of Way
- Exist. Limited Access Line
- Prop. R/W & Limited Access Line
- Prop. R/W
- Prop. Limited Access Line
- Prop. Fairfax County Parkway Trail
- Exist. Fairfax County Parkway Trail

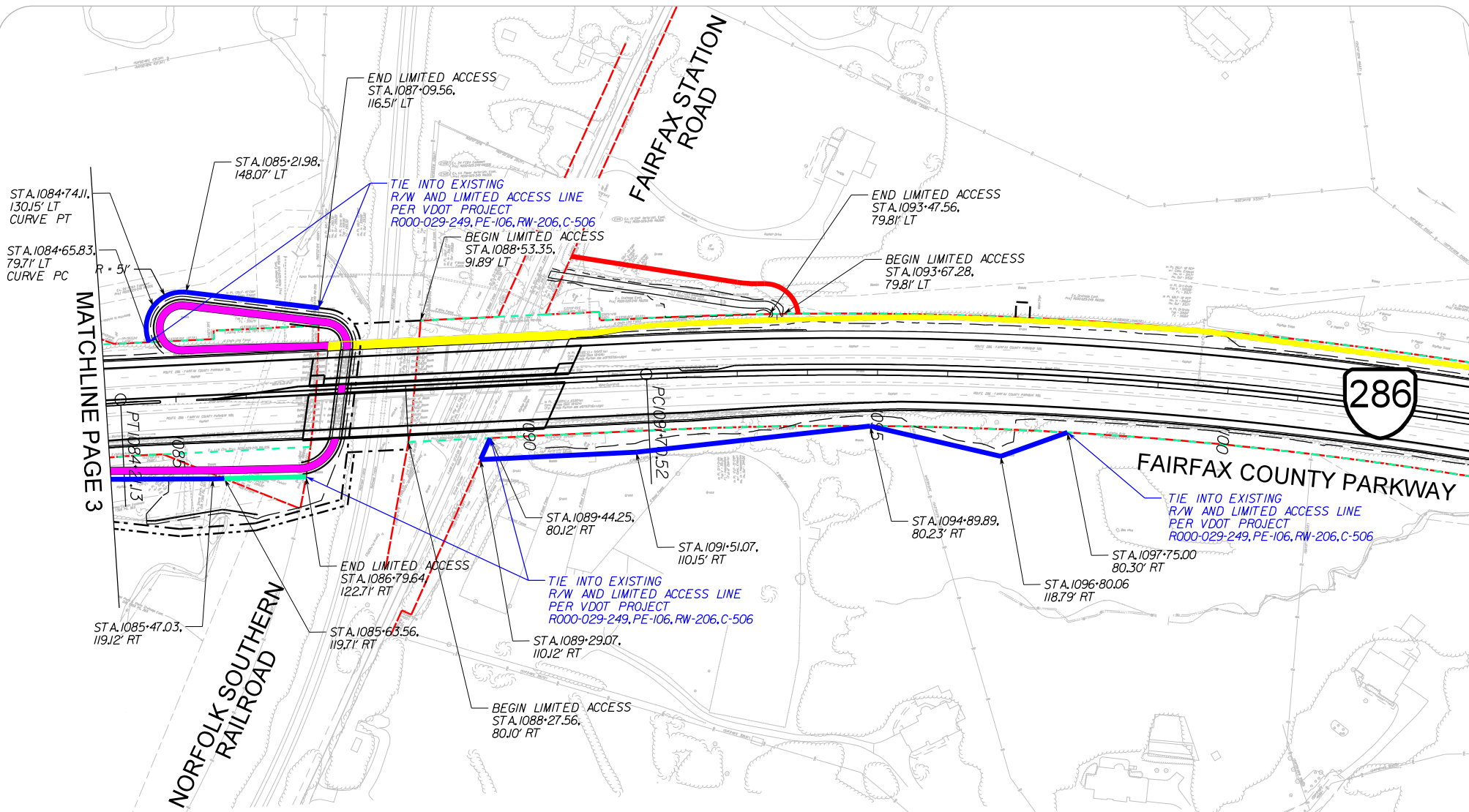


Disclaimer

These plans are unfinished and unapproved and are not to be used for any type of construction or the acquisition of Right of Way. Additional Easement for Right of Way may be required beyond the proposed right-of-way shown on these plans.



ROUTE 286 (FAIRFAX COUNTY PARKWAY) WIDENING AND POPES HEAD ROAD INTERCHANGE



Notes

LIMITED ACCESS CONTROL MODIFICATIONS APPROVED BY THE COMMONWEALTH TRANSPORTATION BOARD BY RESOLUTION DATED July 16, 1987

ALL STATIONS AND OFFSETS SHOWN ARE BASED ON THE RTE. 286 CONSTRUCTION BASELINE.

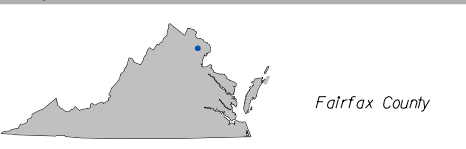
Disclaimer

These plans are unfinished and unapproved and are not to be used for any type of construction or the acquisition of Right of Way. Additional Easement for Right of Way may be required beyond the proposed right-of-way shown on these plans.

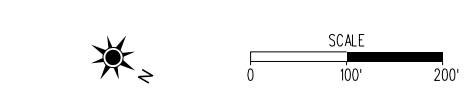
Legend

- Exist.R/W & Limited Access Line
- Exist.Right of Way
- Exist.Limited Access Line
- Prop.R/W & Limited Access Line
- Prop.R/W
- Prop.Limited Access Line
- Prop.Fairfax County Parkway Trail
- Exist.Fairfax County Parkway Trail

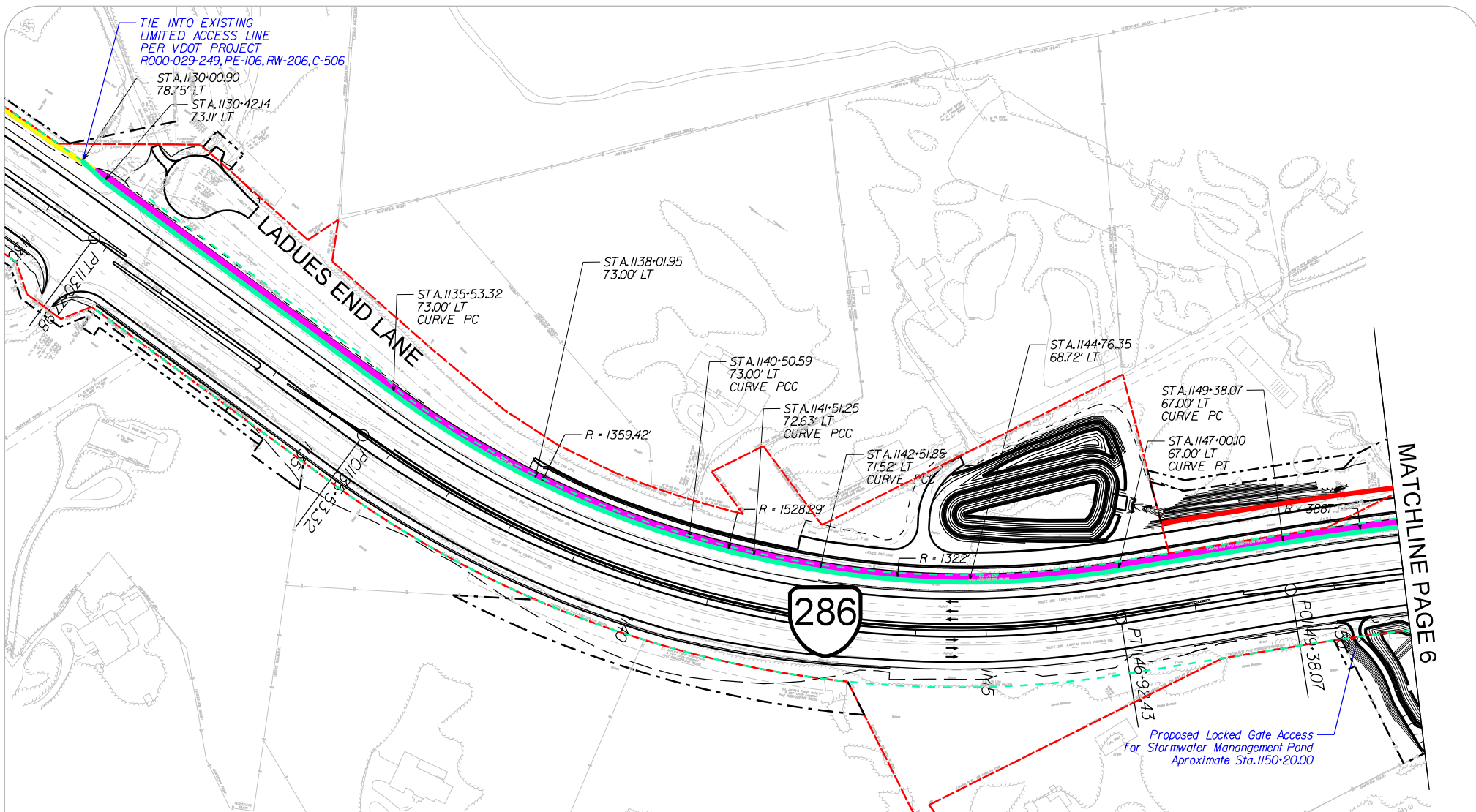
Project Location



North Arrow and Scale



**ROUTE 286 (FAIRFAX COUNTY PARKWAY)
WIDENING AND POPES HEAD ROAD
INTERCHANGE**



MATCHLINE PAGE 6

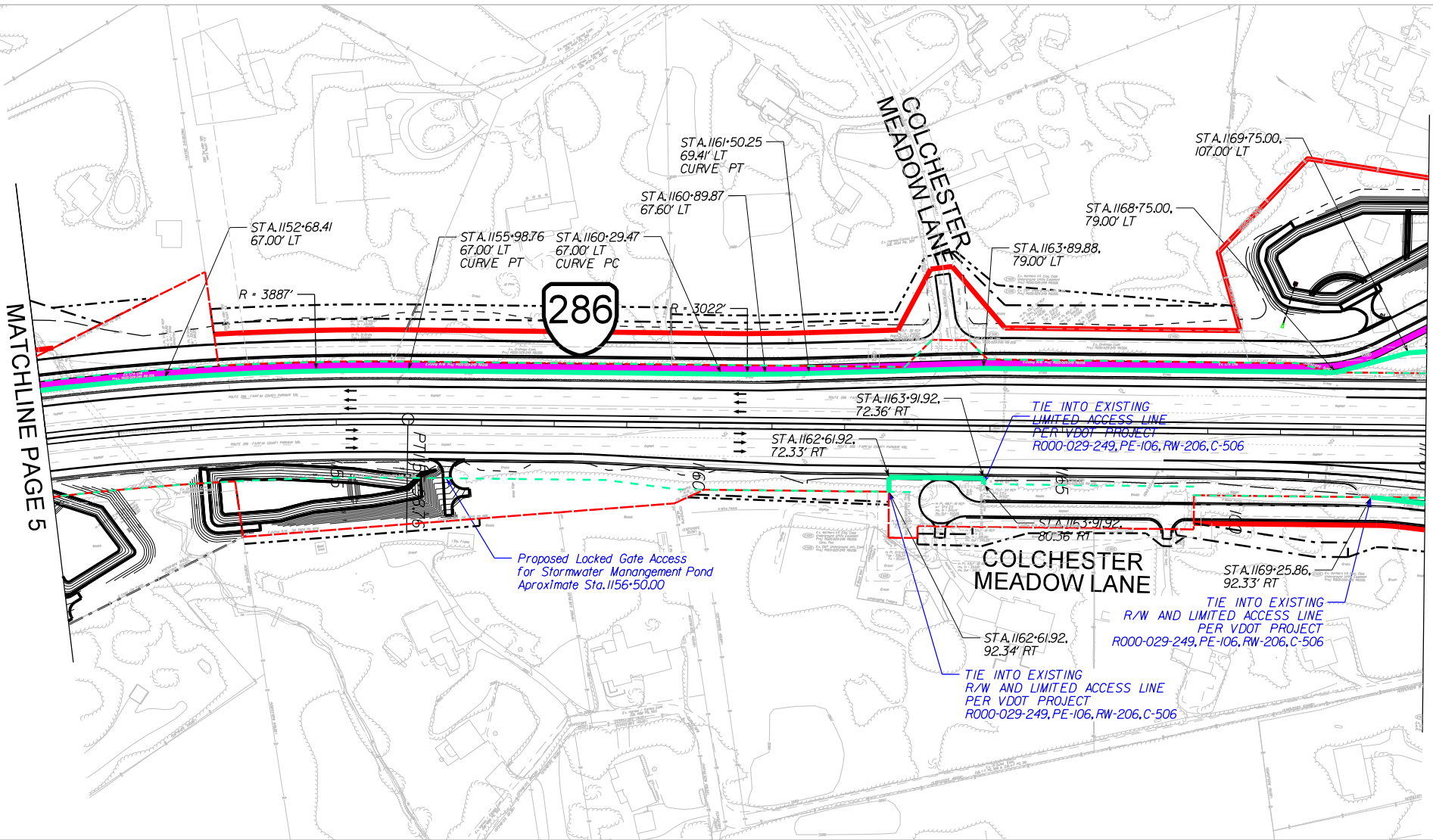
Notes	Legend	Project Location
<p>LIMITED ACCESS CONTROL MODIFICATIONS APPROVED BY THE COMMONWEALTH TRANSPORTATION BOARD BY RESOLUTION DATED July 16, 1987</p> <p>ALL STATIONS AND OFFSETS SHOWN ARE BASED ON THE RTE. 286 CONSTRUCTION BASELINE.</p>	<ul style="list-style-type: none"> Exist. R/W & Limited Access Line Exist. Right of Way Exist. Limited Access Line Prop. R/W & Limited Access Line Prop. R/W Prop. Limited Access Line Prop. Fairfax County Parkway Trail Exist. Fairfax County Parkway Trail 	<p>North Arrow and Scale</p>
<p>Disclaimer</p> <p>These plans are unfinished and unapproved and are not to be used for any type of construction or the acquisition of Right of Way. Additional Easement for Right of Way may be required beyond the proposed right-of-way shown on these plans.</p>		



ROUTE 286 (FAIRFAX COUNTY PARKWAY)
WIDENING AND POPES HEAD ROAD
INTERCHANGE

MATCHLINE PAGE 5

MATCHLINE PAGE 7



Notes

LIMITED ACCESS CONTROL MODIFICATIONS APPROVED BY THE COMMONWEALTH TRANSPORTATION BOARD BY RESOLUTION DATED July 16, 1987

ALL STATIONS AND OFFSETS SHOWN ARE BASED ON THE RTE. 286 CONSTRUCTION BASELINE.

Disclaimer

These plans are unfinished and unapproved and are not to be used for any type of construction or the acquisition of Right of Way. Additional Easement for Right of Way may be required beyond the proposed right-of-way shown on these plans.

Legend

- Exist. R/W & Limited Access Line
- Exist. Right of Way
- Exist. Limited Access Line
- Prop. R/W & Limited Access Line
- Prop. R/W
- Prop. Limited Access Line
- Prop. Fairfax County Parkway Trail
- Exist. Fairfax County Parkway Trail

Project Location

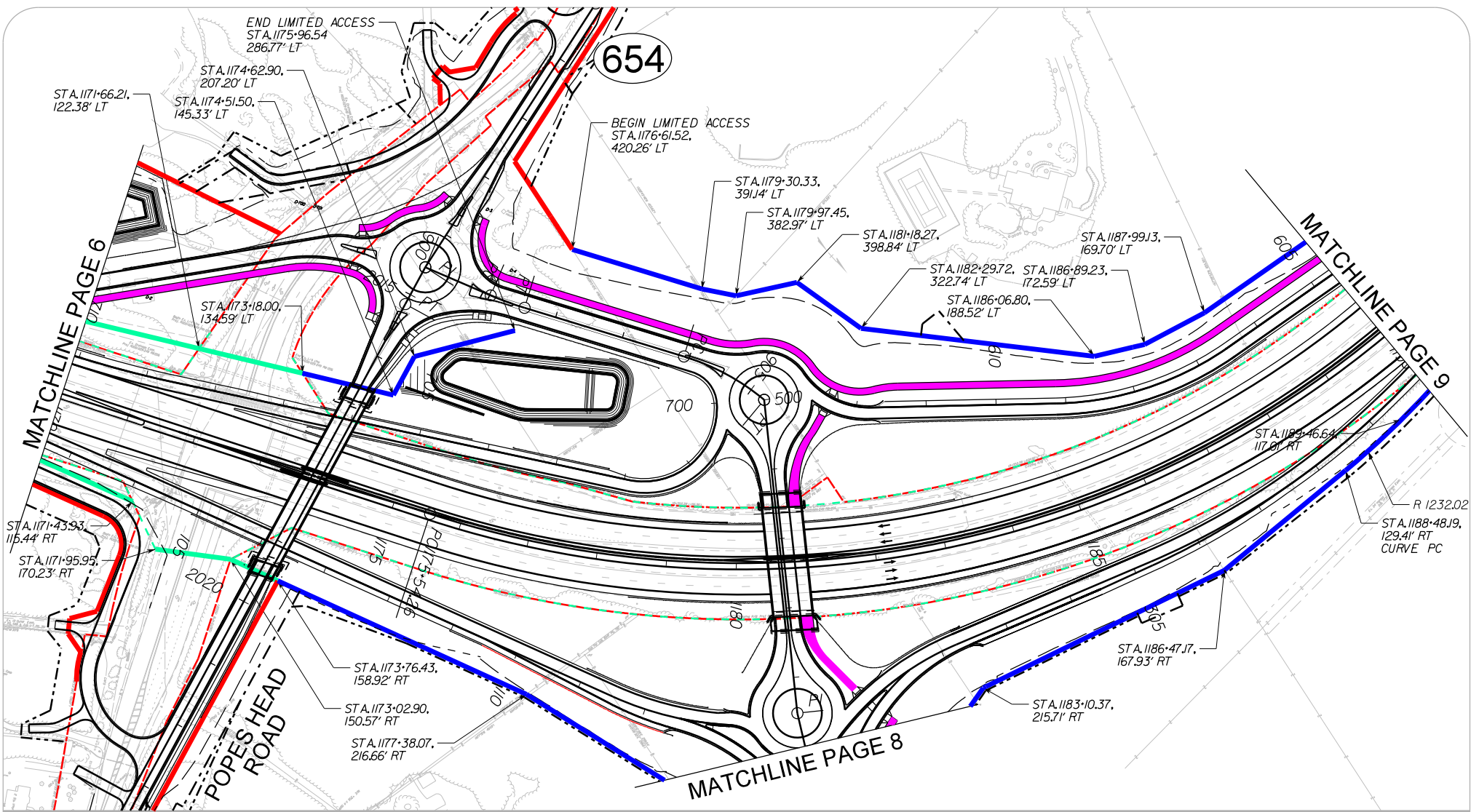


North Arrow and Scale



ROUTE 286 (FAIRFAX COUNTY PARKWAY)
WIDENING AND POPES HEAD ROAD
INTERCHANGE

PAGE 6 OF 13



Notes

LIMITED ACCESS CONTROL MODIFICATIONS APPROVED BY THE COMMONWEALTH TRANSPORTATION BOARD BY RESOLUTION DATED July 16, 1987

ALL STATIONS AND OFFSETS SHOWN ARE BASED ON THE RTE. 286 CONSTRUCTION BASELINE.

Disclaimer

These plans are unfinished and unapproved and are not to be used for any type of construction or the acquisition of Right of Way. Additional Easement for Right of Way may be required beyond the proposed right-of-way shown on these plans.

Legend

- Exist.R/W & Limited Access Line
- Exist.Right of Way
- Exist.Limited Access Line
- Prop.R/W & Limited Access Line
- Prop.R/W
- Prop.Limited Access Line
- Prop.Fairfax County Parkway Trail
- Exist.Fairfax County Parkway Trail

Project Location

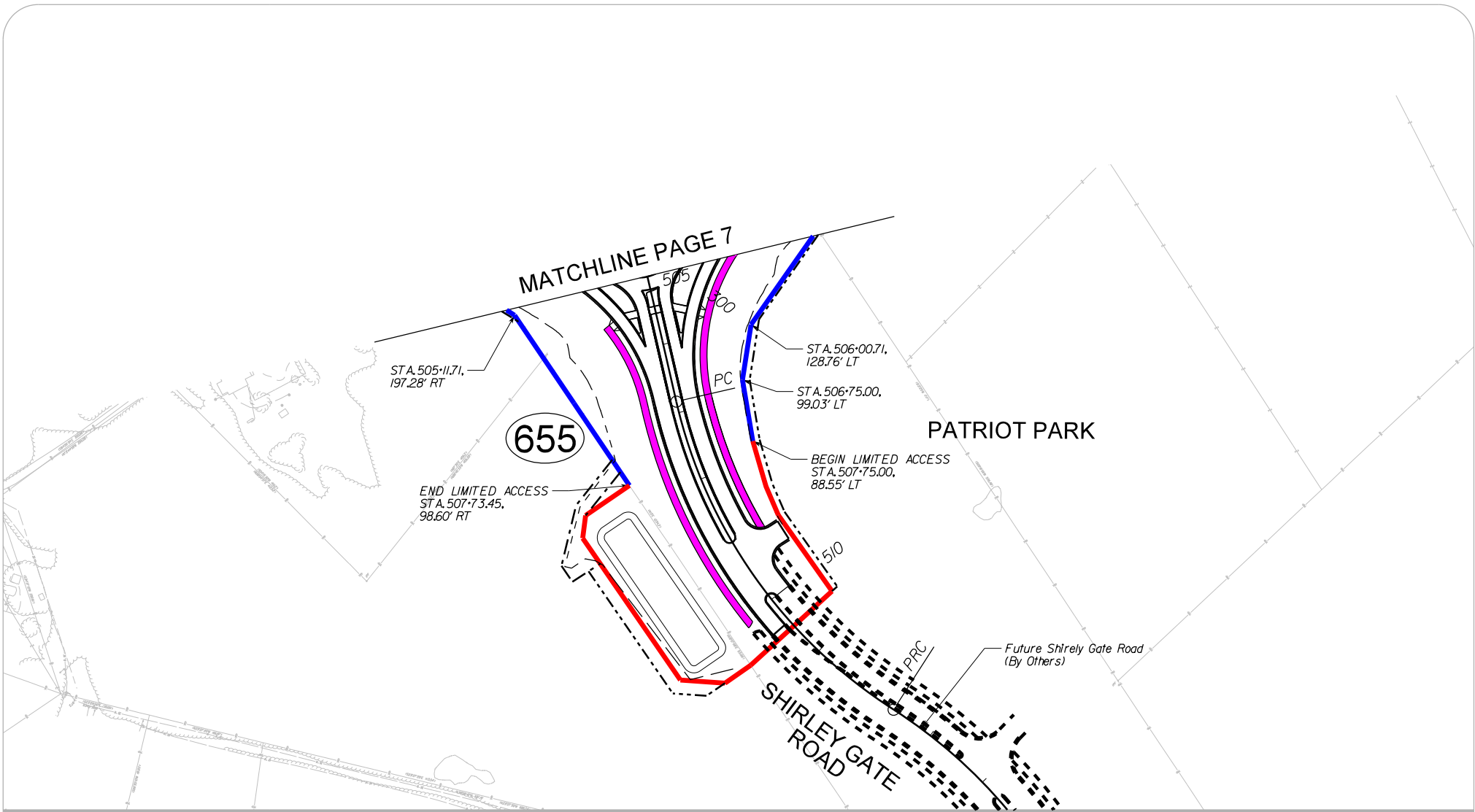


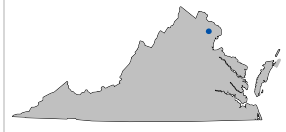
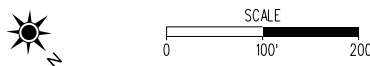
North Arrow and Scale



ROUTE 286 (FAIRFAX COUNTY PARKWAY)
WIDENING AND POPE'S HEAD ROAD
INTERCHANGE

PAGE 7 OF 13

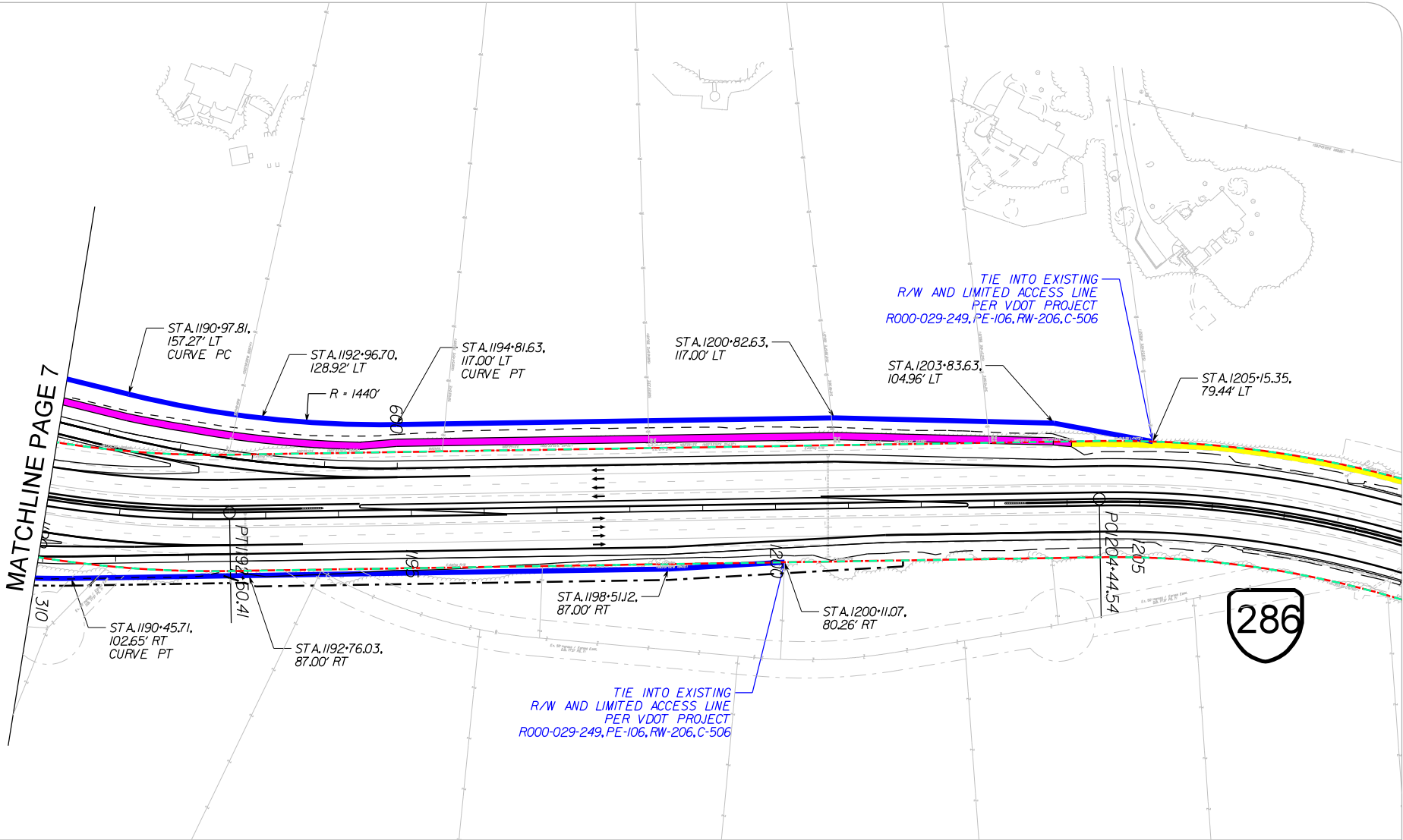


Notes	Legend	Project Location
<p>LIMITED ACCESS CONTROL MODIFICATIONS APPROVED BY THE COMMONWEALTH TRANSPORTATION BOARD BY RESOLUTION DATED July 16, 1987</p> <p>ALL STATIONS AND OFFSETS SHOWN ARE BASED ON THE RTE.655 CONSTRUCTION BASELINE.</p>	<ul style="list-style-type: none"> --- Exist.R/W & Limited Access Line --- Exist.Right of Way --- Exist.Limited Access Line --- Prop.R/W & Limited Access Line --- Prop.R/W --- Prop.Limited Access Line --- Prop.Fairfax County Parkway Trail --- Exist.Fairfax County Parkway Trail 	<p>North Arrow and Scale</p>  <p>Fairfax County</p> 
<p>Disclaimer</p> <p>These plans are unfinished and unapproved and are not to be used for any type of construction or the acquisition of Right of Way. Additional Easement for Right of Way may be required beyond the proposed right-of-way shown on these plans.</p>		



ROUTE 286 (FAIRFAX COUNTY PARKWAY)
WIDENING AND POPES HEAD ROAD
INTERCHANGE

MATCHLINE PAGE 7



Notes

LIMITED ACCESS CONTROL MODIFICATIONS APPROVED BY THE COMMONWEALTH TRANSPORTATION BOARD BY RESOLUTION DATED July 16, 1987

ALL STATIONS AND OFFSETS SHOWN ARE BASED ON THE RTE. 286 CONSTRUCTION BASELINE.

Disclaimer

These plans are unfinished and unapproved and are not to be used for any type of construction or the acquisition of Right of Way. Additional Easement for Right of Way may be required beyond the proposed right-of-way shown on these plans.

Legend

- Exist. R/W & Limited Access Line
- Exist. Right of Way
- Exist. Limited Access Line
- Prop. R/W & Limited Access Line
- Prop. R/W
- Prop. Limited Access Line
- Prop. Fairfax County Parkway Trail
- Exist. Fairfax County Parkway Trail

Project Location

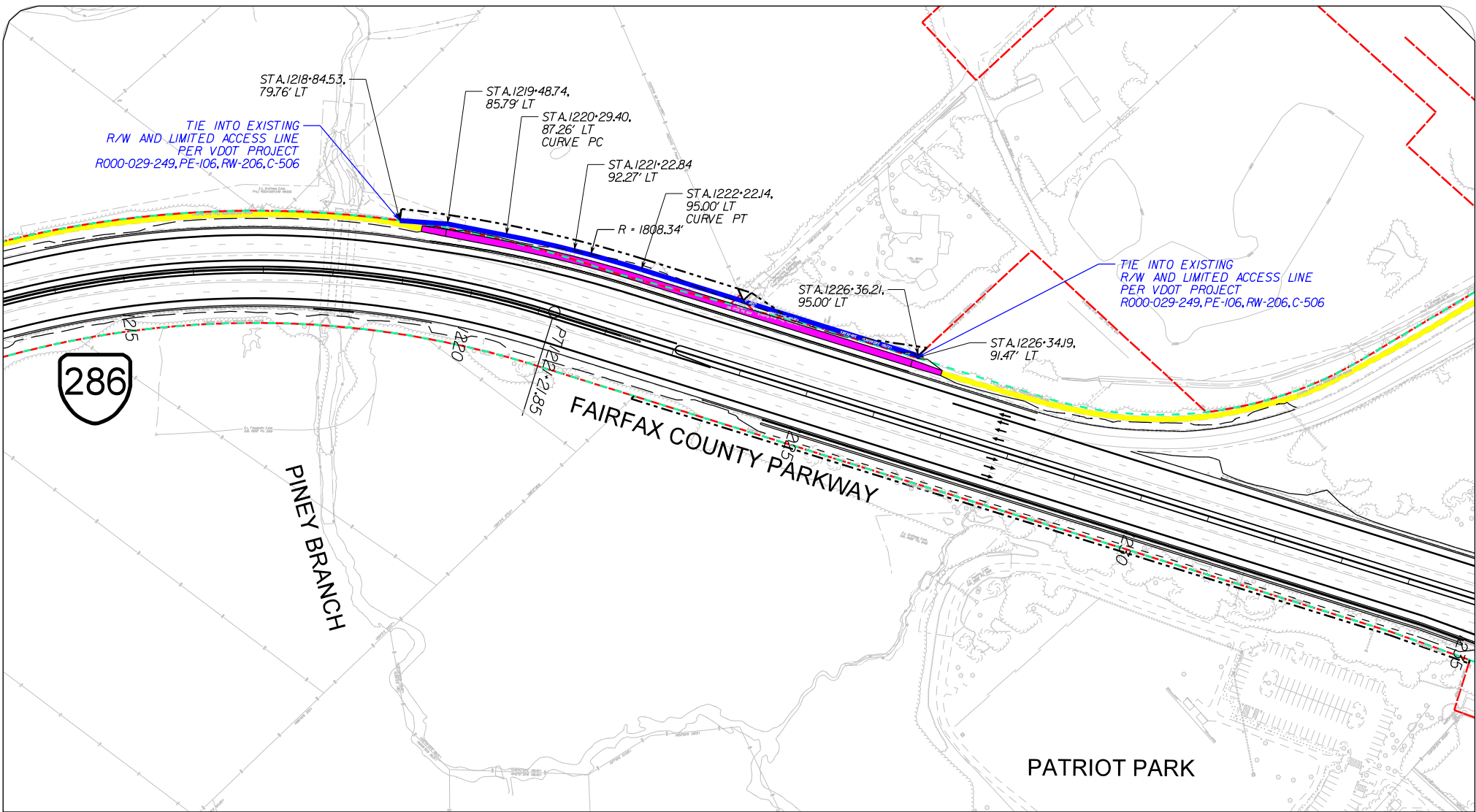


North Arrow and Scale



ROUTE 286 (FAIRFAX COUNTY PARKWAY)
WIDENING AND POPES HEAD ROAD
INTERCHANGE

PAGE 9 OF 13



Notes

LIMITED ACCESS CONTROL MODIFICATIONS APPROVED BY THE COMMONWEALTH TRANSPORTATION BOARD BY RESOLUTION DATED July 16, 1987

ALL STATIONS AND OFFSETS SHOWN ARE BASED ON THE RTE. 286 CONSTRUCTION BASELINE.

Disclaimer

These plans are unfinished and unapproved and are not to be used for any type of construction or the acquisition of Right of Way. Additional Easement for Right of Way may be required beyond the proposed right-of-way shown on these plans.

Legend

- Exist. R/W & Limited Access Line
- Exist. Right of Way
- Exist. Limited Access Line
- Prop. R/W & Limited Access Line
- Prop. R/W
- Prop. Limited Access Line
- Prop. Fairfax County Parkway Trail
- Exist. Fairfax County Parkway Trail

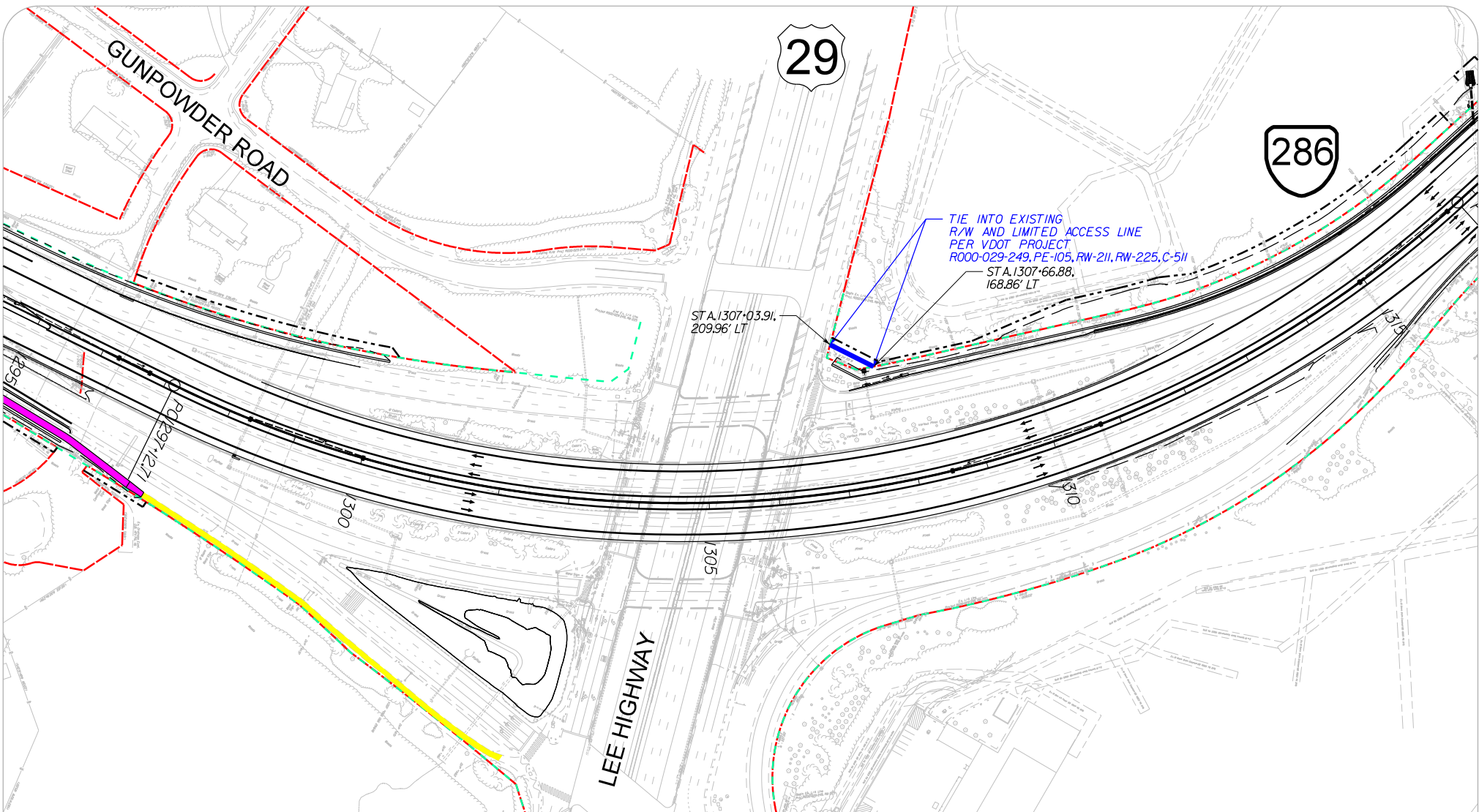
Project Location



North Arrow and Scale



ROUTE 286 (FAIRFAX COUNTY PARKWAY)
WIDENING AND POPES HEAD ROAD
INTERCHANGE



Notes

LIMITED ACCESS CONTROL MODIFICATIONS APPROVED BY THE COMMONWEALTH TRANSPORTATION BOARD BY RESOLUTION DATED July 16, 1987

ALL STATIONS AND OFFSETS SHOWN ARE BASED ON THE RTE. 286 CONSTRUCTION BASELINE.

Disclaimer

These plans are unfinished and unapproved and are not to be used for any type of construction or the acquisition of Right of Way. Additional Easement for Right of Way may be required beyond the proposed right-of-way shown on these plans.

Legend

- Exist. R/W & Limited Access Line
- Exist. Right of Way
- Exist. Limited Access Line
- Prop. R/W & Limited Access Line
- Prop. R/W
- Prop. Limited Access Line
- Prop. Fairfax County Parkway Trail
- Exist. Fairfax County Parkway Trail

Project Location



North Arrow and Scale



ROUTE 286 (FAIRFAX COUNTY PARKWAY)
WIDENING AND POPES HEAD ROAD
INTERCHANGE

Proposed Right of Way and Limited Access

Fairfax County Parkway Widening and Interchange at Popes Head Road
 Project No. 0286-029-259, UPC 107937 / Project No. 0286-029-365, UPC 111725
 Commonwealth Transportation Board Meeting July 2020

Roadway B/L	Station	Offset (ft)	Radius (ft)	Direction	Type	Notes
RTE. 286	1033+93.32	789.04 RT	- -		Proposed R/W and Limited Access	Tie Into Ex. R/W and Limited Access
RTE. 286	1033+96.89	788.20 RT	- -		Proposed R/W and Limited Access	
RTE. 286	1034+09.73	619.72 RT	- -		Proposed R/W and Limited Access	
RTE. 286	1034+75.91	439.25 RT	566 CW		Proposed R/W and Limited Access	
RTE. 286	1036+15.08	300.59 RT	1166 CW		Proposed R/W and Limited Access	
RTE. 286	1036+22.16	295.78 RT	- -		Proposed R/W and Limited Access	
RTE. 286	1036+30.29	307.87 RT	- -		Proposed R/W and Limited Access	
RTE. 286	1037+66.72	229.09 RT	1145 CW		Proposed R/W and Limited Access	
RTE. 286	1039+03.31	141.27 RT	- -		Proposed R/W and Limited Access	
RTE. 286	1039+14.16	169.28 RT	- -		Proposed R/W and Limited Access	
RTE. 286	1039+03.31	141.27 RT	- -		Proposed R/W and Limited Access	Tie Into Ex. R/W and Limited Access
RTE. 286	1074+45.15	104.88 RT	- -		Existing R/W and Limited Access	End Limited Access
RTE. 286	1075+86.02	214.66 RT	- -		Proposed R/W and Limited Access	Begin Limited Access
RTE. 286	1076+10.05	155.62 RT	- -		Proposed R/W and Limited Access	
RTE. 286	1076+40.25	114.30 RT	120 CW		Proposed R/W and Limited Access	
RTE. 286	1076+87.66	92.40 RT	- -		Proposed R/W and Limited Access	Tie Into Ex. R/W and Limited Access
RTE. 286	1079+16.44	91.36 RT	- -		Proposed R/W and Limited Access	Tie Into Ex. R/W and Limited Access
RTE. 286	1079+70.55	92.05 RT	1299 CW		Proposed R/W and Limited Access	
RTE. 286	1080+24.69	92.55 RT	- -		Proposed R/W and Limited Access	
RTE. 286	1080+60.40	92.77 RT	- -		Proposed R/W and Limited Access	
RTE. 286	1080+95.65	93.76 RT	426.74 CW		Proposed R/W and Limited Access	
RTE. 286	1081+30.87	96.34 RT	- -		Proposed R/W and Limited Access	
RTE. 286	1082+01.39	101.28 RT	- -		Proposed R/W and Limited Access	
RTE. 286	1082+91.28	105.81 RT	983 CW		Proposed R/W and Limited Access	
RTE. 286	1083+81.48	111.46 RT	- -		Proposed R/W and Limited Access	
RTE. 286	1085+47.03	119.12 RT	- -		Proposed R/W and Limited Access	
RTE. 286	1085+63.56	119.71 RT	- -		Proposed Limited Access	Tie Into Ex. R/W
RTE. 286	1086+79.64	122.71 RT	- -		Proposed Limited Access	End Limited Access
RTE. 286	1084+65.83	79.71 LT	- -		Proposed R/W and Limited Access	Tie Into Ex. R/W and Limited Access
RTE. 286	1084+74.11	130.15 LT	51 CW		Proposed R/W and Limited Access	

Proposed Right of Way and Limited Access

Fairfax County Parkway Widening and Interchange at Popes Head Road

Project No. 0286-029-259, UPC 107937 / Project No. 0286-029-365, UPC 111725

Commonwealth Transportation Board Meeting July 2020

Roadway B/L	Station	Offset (ft)	Radius (ft)	Direction	Type	Notes
RTE. 286	1085+21.98	148.07 LT	- -	- -	Proposed R/W and Limited Access	
RTE. 286	1087+09.56	116.51 LT	- -	- -	Proposed R/W and Limited Access	End Limited Access
RTE. 286	1088+53.35	91.89 LT	- -	- -	Existing R/W and Limited Access	Begin Limited Access
RTE. 286	1093+47.56	79.81 LT	- -	- -	Existing R/W and Limited Access	End Limited Access
RTE. 286	1093+67.28	79.81 LT	- -	- -	Existing R/W and Limited Access	Begin Limited Access
RTE. 286	1088+27.56	80.10 RT	- -	- -	Existing R/W and Limited Access	Begin Limited Access
RTE. 286	1089+44.25	80.12 RT	- -	- -	Proposed R/W and Limited Access	Tie Into Ex. R/W and Limited Access
RTE. 286	1089+29.07	110.12 RT	- -	- -	Proposed R/W and Limited Access	
RTE. 286	1091+51.07	110.15 RT	- -	- -	Proposed R/W and Limited Access	
RTE. 286	1094+89.89	80.23 RT	- -	- -	Proposed R/W and Limited Access	
RTE. 286	1096+80.06	118.79 RT	- -	- -	Proposed R/W and Limited Access	
RTE. 286	1097+75.00	80.30 RT	- -	- -	Proposed R/W and Limited Access	Tie Into Ex. R/W and Limited Access
RTE. 286	1130+00.90	78.75 LT	- -	- -	Proposed Limited Access	Tie Into Ex. Limited Access
RTE. 286	1130+42.14	73.11 LT	- -	- -	Proposed Limited Access	
RTE. 286	1135+53.32	73.00 LT	- -	- -	Proposed Limited Access	
RTE. 286	1138+01.95	73.00 LT	1359.42	CCW	Proposed Limited Access	
RTE. 286	1140+50.59	73.00 LT	- -	- -	Proposed Limited Access	
RTE. 286	1141+51.25	72.63 LT	1528.29	CCW	Proposed Limited Access	
RTE. 286	1142+51.85	71.52 LT	- -	- -	Proposed Limited Access	
RTE. 286	1144+76.35	68.72 LT	1322	CCW	Proposed Limited Access	
RTE. 286	1147+00.10	67.00 LT	- -	- -	Proposed Limited Access	
RTE. 286	1149+38.07	67.00 LT	- -	- -	Proposed Limited Access	
RTE. 286	1152+68.41	67.00 LT	3887	CW	Proposed Limited Access	
RTE. 286	1155+98.76	67.00 LT	- -	- -	Proposed Limited Access	
RTE. 286	1160+29.47	67.00 LT	- -	- -	Proposed Limited Access	
RTE. 286	1160+89.87	67.60 LT	3022	CCW	Proposed Limited Access	
RTE. 286	1161+50.25	69.41 LT	- -	- -	Proposed Limited Access	
RTE. 286	1163+89.88	79.00 LT	- -	- -	Proposed Limited Access	
RTE. 286	1168+75.00	79.00 LT	- -	- -	Proposed Limited Access	
RTE. 286	1169+75.00	107.00 LT	- -	- -	Proposed Limited Access	

Proposed Right of Way and Limited Access

Fairfax County Parkway Widening and Interchange at Popes Head Road
 Project No. 0286-029-259, UPC 107937 / Project No. 0286-029-365, UPC 111725
 Commonwealth Transportation Board Meeting July 2020

Roadway B/L	Station	Offset (ft)	Radius (ft)	Direction	Type	Notes
RTE. 286	1171+66.21	122.38 LT	--	--	Proposed Limited Access	
RTE. 286	1173+18.00	134.59 LT	--	--	Proposed Limited Access	Tie Into Ex. R/W and Limited Access
RTE. 286	1174+51.50	145.33 LT	--	--	Proposed R/W and Limited Access	
RTE. 286	1174+62.90	207.20 LT	--	--	Proposed R/W and Limited Access	
RTE. 286	1175+96.54	286.77 LT	--	--	Proposed R/W and Limited Access	End Limited Access
RTE. 286	1176+61.52	420.26 LT	--	--	Proposed R/W and Limited Access	Begin Limited Access
RTE. 286	1179+30.33	391.14 LT	--	--	Proposed R/W and Limited Access	
RTE. 286	1179+97.45	382.97 LT	--	--	Proposed R/W and Limited Access	
RTE. 286	1181+18.27	398.84 LT	--	--	Proposed R/W and Limited Access	
RTE. 286	1182+29.72	322.74 LT	--	--	Proposed R/W and Limited Access	
RTE. 286	1186+06.80	188.52 LT	--	--	Proposed R/W and Limited Access	
RTE. 286	1186+89.23	172.59 LT	--	--	Proposed R/W and Limited Access	
RTE. 286	1187+99.13	169.70 LT	--	--	Proposed R/W and Limited Access	
RTE. 286	1190+97.81	157.27 LT	--	--	Proposed R/W and Limited Access	
RTE. 286	1192+96.70	128.92 LT	1440	CCW	Proposed R/W and Limited Access	
RTE. 286	1194+81.63	117.00 LT	--	--	Proposed R/W and Limited Access	
RTE. 286	1200+82.63	117.00 LT	--	--	Proposed R/W and Limited Access	
RTE. 286	1203+83.63	104.96 LT	--	--	Proposed R/W and Limited Access	
RTE. 286	1205+15.35	79.44 LT	--	--	Proposed R/W and Limited Access	Tie Into Ex. R/W and Limited Access
RTE. 286	1162+61.92	92.34 RT	--	--	Proposed Limited Access	Tie Into Ex. R/W and Limited Access
RTE. 286	1162+61.92	72.33 RT	--	--	Proposed Limited Access	
RTE. 286	1163+91.92	72.36 RT	--	--	Proposed Limited Access	
RTE. 286	1163+91.92	80.36 RT	--	--	Proposed Limited Access	Tie Into Ex. Limited Access
RTE. 286	1169+25.86	92.33 RT	--	--	Proposed Limited Access	Tie Into Ex. R/W and Limited Access
RTE. 286	1171+43.93	115.44 RT	--	--	Proposed Limited Access	Tie Into Ex. R/W and Limited Access
RTE. 286	1171+95.95	170.23 RT	--	--	Proposed Limited Access	Tie Into Ex. R/W and Limited Access
RTE. 286	1173+02.90	150.57 RT	--	--	Proposed Limited Access	Tie Into Ex. R/W
RTE. 286	1173+76.43	158.92 RT	--	--	Proposed Right of Way and Limited Access	
RTE. 286	1177+38.07	216.66 RT	--	--	Proposed Right of Way and Limited Access	

Proposed Right of Way and Limited Access

Fairfax County Parkway Widening and Interchange at Popes Head Road
 Project No. 0286-029-259, UPC 107937 / Project No. 0286-029-365, UPC 111725
 Commonwealth Transportation Board Meeting July 2020

Roadway B/L	Station	Offset (ft)	Radius (ft)	Direction	Type	Notes
RTE. 655	505+11.71	197.28 RT	- -	- -	Proposed Right of Way and Limited Access	
RTE. 655	507+73.45	98.60 RT	- -	- -	Proposed Right of Way and Limited Access	End Limited Access
RTE. 655	507+75.00	88.55 LT	- -	- -	Proposed Right of Way and Limited Access	Begin Limited Access
RTE. 655	506+75.00	99.03 LT	- -	- -	Proposed Right of Way and Limited Access	
RTE. 655	506+00.71	128.76 LT	- -	- -	Proposed Right of Way and Limited Access	
RTE. 286	1183+10.37	215.71 RT	- -	- -	Proposed Right of Way and Limited Access	
RTE. 286	1186+47.17	167.93 RT	- -	- -	Proposed Right of Way and Limited Access	
RTE. 286	1188+48.19	129.41 RT	- -	- -	Proposed Right of Way and Limited Access	
RTE. 286	1189+46.64	117.01 RT	1232.02	CCW	Proposed Right of Way and Limited Access	
RTE. 286	1190+45.71	102.65 RT	- -	- -	Proposed Right of Way and Limited Access	
RTE. 286	1192+76.03	87.00 RT	- -	- -	Proposed Right of Way and Limited Access	
RTE. 286	1198+51.12	87.00 RT	- -	- -	Proposed Right of Way and Limited Access	
RTE. 286	1200+11.07	80.26 RT	- -	- -	Proposed Right of Way and Limited Access	Tie Into Ex. R/W and Limited Access
RTE. 286	1218+84.53	79.76 LT	- -	- -	Proposed Right of Way and Limited Access	Tie Into Ex. R/W and Limited Access
RTE. 286	1219+48.74	85.79 LT	- -	- -	Proposed Right of Way and Limited Access	
RTE. 286	1220+29.40	87.26 LT	- -	- -	Proposed Right of Way and Limited Access	
RTE. 286	1221+22.84	92.27 LT	1808.34	CW	Proposed Right of Way and Limited Access	
RTE. 286	1222+22.14	95.00 LT	- -	- -	Proposed Right of Way and Limited Access	
RTE. 286	1226+36.21	95.00 LT	- -	- -	Proposed Right of Way and Limited Access	
RTE. 286	1226+34.19	91.47 LT	- -	- -	Proposed Right of Way and Limited Access	Tie Into Ex. R/W and Limited Access
RTE. 286	1307+03.91	209.96 LT	- -	- -	Proposed Right of Way and Limited Access	Tie Into Ex. R/W and Limited Access
RTE. 286	1307+66.88	168.86 LT	- -	- -	Proposed Right of Way and Limited Access	Tie Into Ex. R/W and Limited Access

THREE MAJOR PARKWAYS NOW PRIMARY ROADS

New route numbers and funding for Fairfax County, Prince William, and Franconia-Springfield parkways

FAIRFAX—The Commonwealth Transportation Board approved the transfer yesterday of the Fairfax County Parkway, Prince William Parkway and Franconia-Springfield Parkway to primary roads, making them eligible for new funding and maintenance priorities.

As primary roads, the routes can receive federal funding for paving, guardrail, bridge improvements and other projects. Federal funding typically covers 80 percent of the cost to maintain interstates and primary roads, with the remaining 20 percent from state funds.

The **Fairfax County Parkway** (Route 7100), which runs from Route 1 to Route 7, will be renamed **Route 286**. The 32-mile road carries between 22,000 and 75,000 vehicles per day.

The **Franconia-Springfield Parkway** (Route 7900), which runs from Beulah Road to the Fairfax County Parkway, will be renamed **Route 289**. The 4-mile road carries between 53,000 and 57,000 vehicles per day.

The **Prince William Parkway** (Route 3000), which runs from Route 1 to Route 234, will be renamed **Route 294**. The 16-mile road carries between 25,000 and 54,000 vehicles per day.

Over the next three months, VDOT will replace signs with the new route numbers and add additional signs indicating “Old Route 7100,” “Old Route 3000,” and “Old Route 7900.” Drivers will see the old route number alongside the new route number for about a year so that hotels, businesses, map companies, etc. have ample time to update their materials.

Roads may be considered for the transfer from secondary to primary when they meet a majority of certain criteria, such as carrying a minimum traffic volume; carrying a minimum percentage of out-of-state, truck, tractor-trailer, or bus traffic; and serving as a link for highways, county seats or sites of historic or scenic interest.

There are now about 470 miles of primary roads in northern Virginia, and 8,000 miles of primary roads statewide.

Information in VDOT news releases was accurate at the time the release was published. For the most current information about projects or programs, please visit the project or program Web pages. You may find those by searching by keyword in the search Virginia DOT box above.