



# Environmental Division

**CTB Overview**  
**January 14, 2020**

Angel Deem  
Environmental Division Director

# MISSION

## VDOT Mission:

**Our mission is to plan, deliver, operate, maintain, and support a transportation system that is safe, enables easy movement of people and goods, enhances the economy and improves our quality of life.**

## Environmental Division Mission:

**Our mission is to facilitate regulatory compliance and environmental protection through leadership, accountability and continuous improvement while delivering the Commonwealth's transportation program.**

# DIVISION STRUCTURE

Division Director  
Angel Deem

Asst. Director – Project Development <i>Cooper Wamsley</i>	Asst. Director – Project Delivery Ed Wallingford	Contracts & Business Support Patrick Hughes
NEPA Programs	Compliance	Procurement
Cultural Resources	Water Quality Permitting	Contract Management
Air & Noise	Threatened & Endangered Species	Administrative & Training Budgets
Procedures Management	MS4 Support	Data Administration

## Central Office – 43 staff

- Procedures, Program Development
- Guidance, Technical Assistance
- Complex Project Management

## 9 District Offices – approx. 100 staff

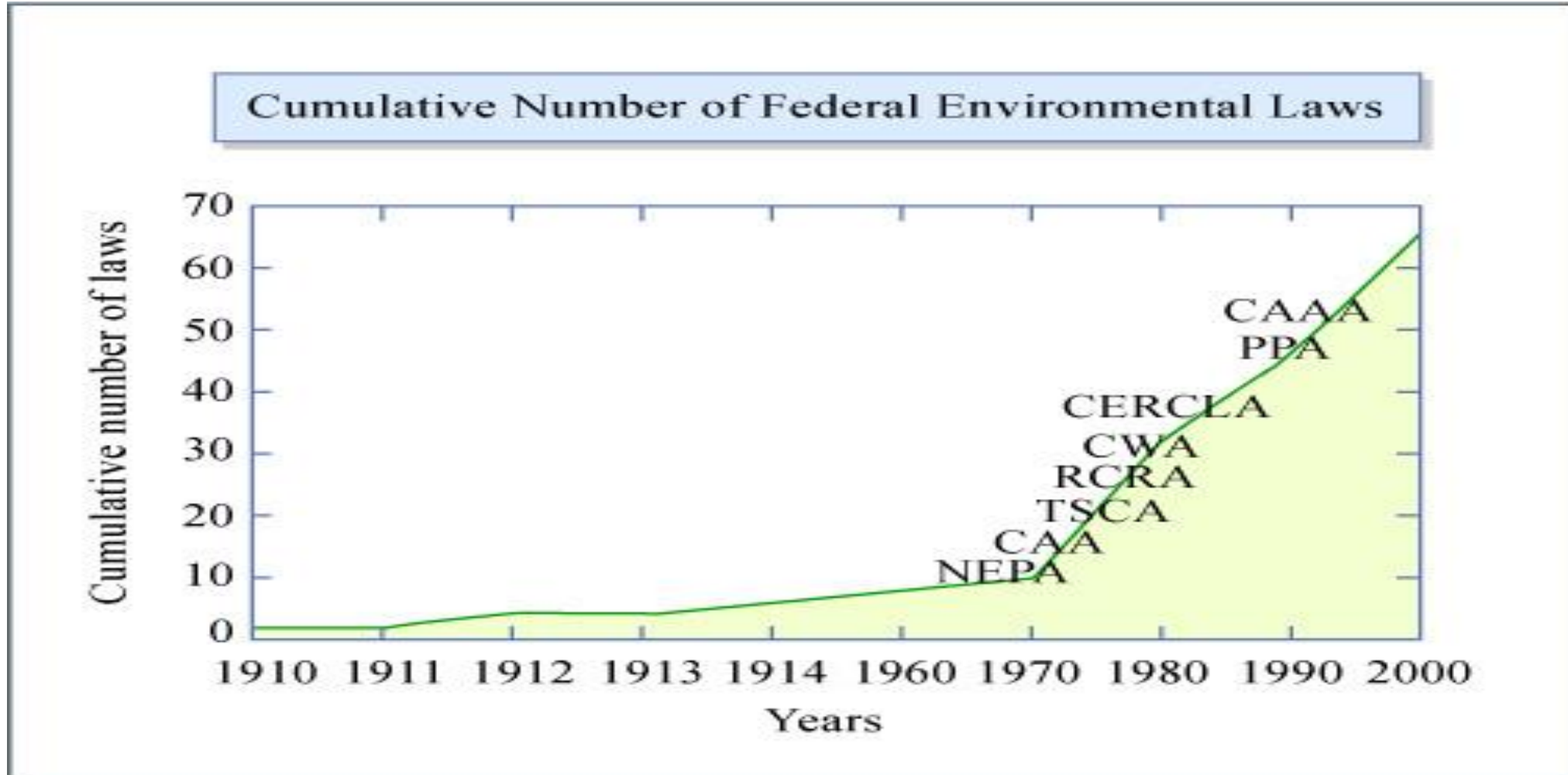
- Project Reviews & Clearances: NEPA, Water Quality Permitting, T&E Clearance, Compliance
- Regional Staff for Cultural Resource & Hazardous Materials

# Products and Services

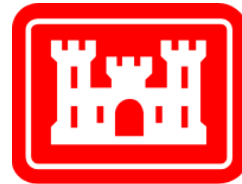
- **Regulatory Clearances**
- **Negotiate and Manage Efficiencies**
- **Statewide Environmental Business Tools & Products**
- **Environmental Program Administration**
- **Technical Assistance and Coordination**



# Regulatory Clearances



# Regulatory Partners



**US Army Corps  
of Engineers®**



**DHR** | Virginia Department of Historic Resources



# Identification – Avoidance – Minimization - Documentation

## Resources:



Existing Traffic



Future Traffic Patterns



Communities



Community Facilities



Farmland



Forested Areas



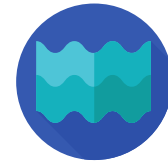
Noise



Wetlands & Streams



Water Quality



Floodplains



Wildlife & Habitat



Threatened & Endangered Species



Historic Structures



Archaeological Resources



Parks & Recreation Areas



Hazardous Materials



Air Quality



Property



# Clearances & Commitments

- NEPA Document Approval
- Permit Acquisition - Conditions
- Project Design
- Time of Year Restrictions
- Contract Special Provisions & Copied Notes  
(R&B Specs)



# Negotiate and Manage Efficiencies

- **Streamlining Agreements with State Agencies**
- **Federal Agency Liaisons**
- **Programmatic Agreements**
- **Process Efficiencies**
- **State Agency Assistance**



# Statewide Environmental Business Tools & Products



Navigation: PROJECTS GIS REPORTS DOCUMENTS CONTRACTS

Comprehensive Environmental Data

Projects

Show: All Construction Projects

Project Identifier	State Project	Jurisdiction
<b>All Active Construction Projects</b>		
Wythe Creek Road- Additional Soil Borings	00172-147-23653848	Poquoson
Work Order 1: Beam End Repair- BRDG-966-333	00017-088-23741583	Spotsylvania
Woodrow Wilson Bridge Mitigation Sites	00000-909-18973848	Northern V
Wise Region Gateway Signs Phase 2	00000-000-10001584	VA State

**CEDAR branches out with new functionality**

**SUCCESSES IN STEWARDSHIP**

U.S. Department of Transportation  
Federal Highway Administration

February 2019

**CEDAR Helps States Increase Process Efficiencies in Project Development to Improve Environmental Compliance**

Construction	✦
Construction	✦
Construction	✦
Construction	✦
Construction	✦
Construction	✦

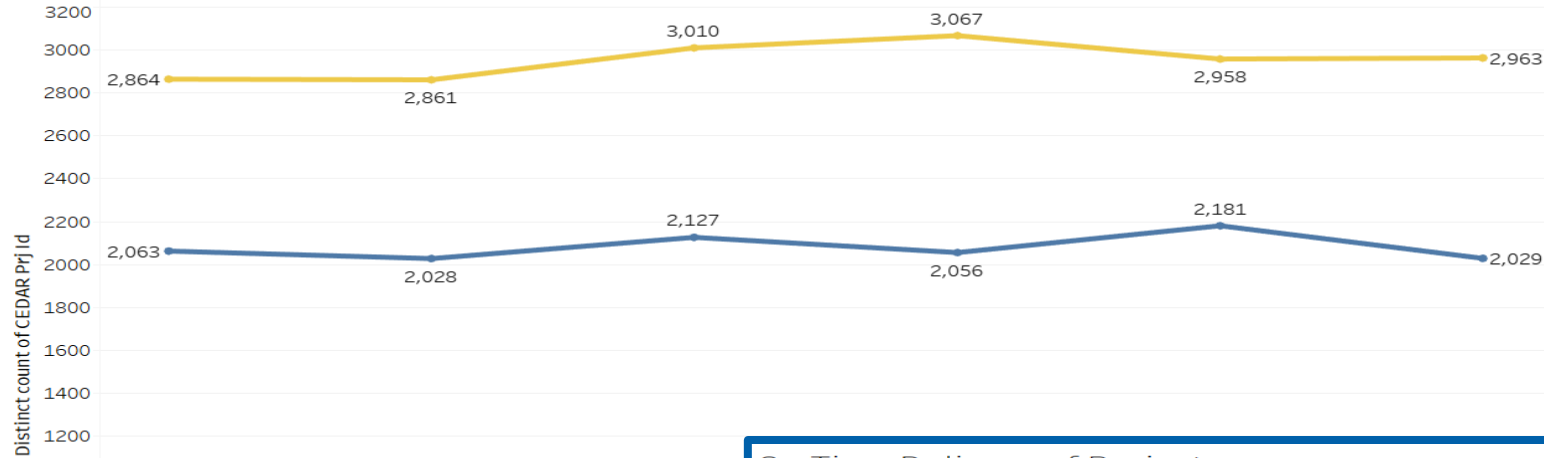
# Environmental Program Administration

- **Environmental Memoranda**
- **Performance Metrics**
- **General Assembly**
- **Reviews of Proposed Regulation**



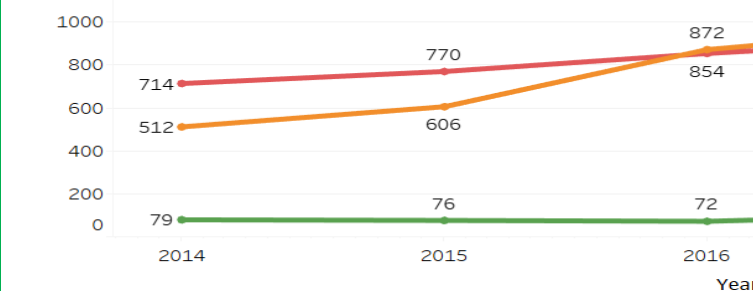
# Performance Metrics

Trend of Activities over 5 years

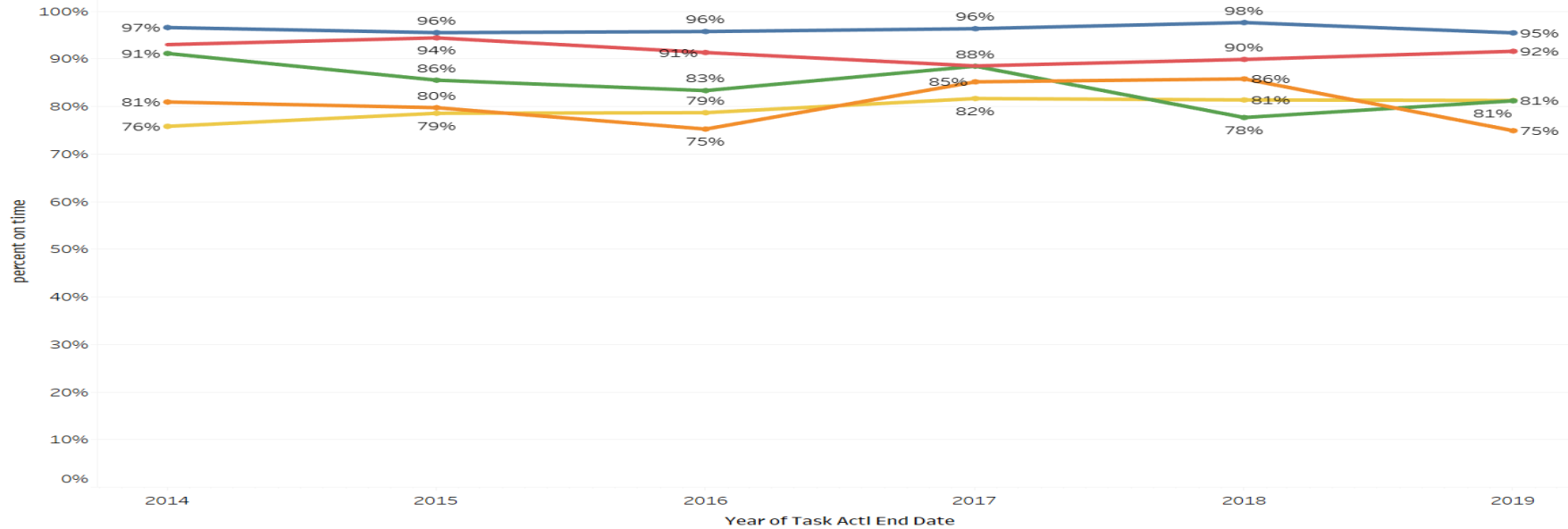


## Program Area

- Cultural Resources
- Documents
- Hazardous Materials
- Noise
- Water Quality Permits



On Time Delivery of Projects

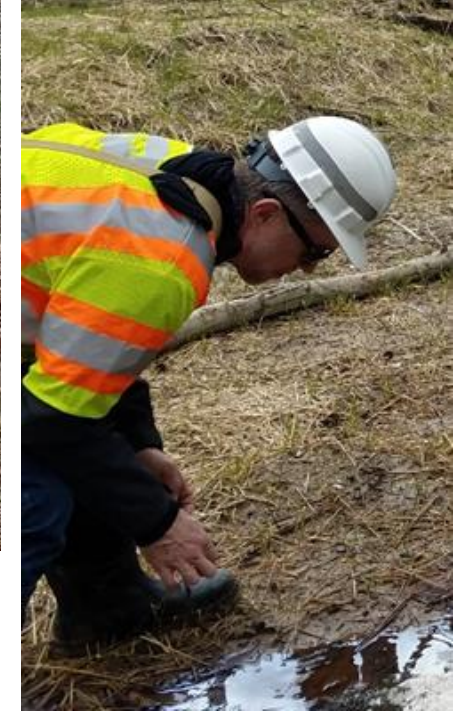
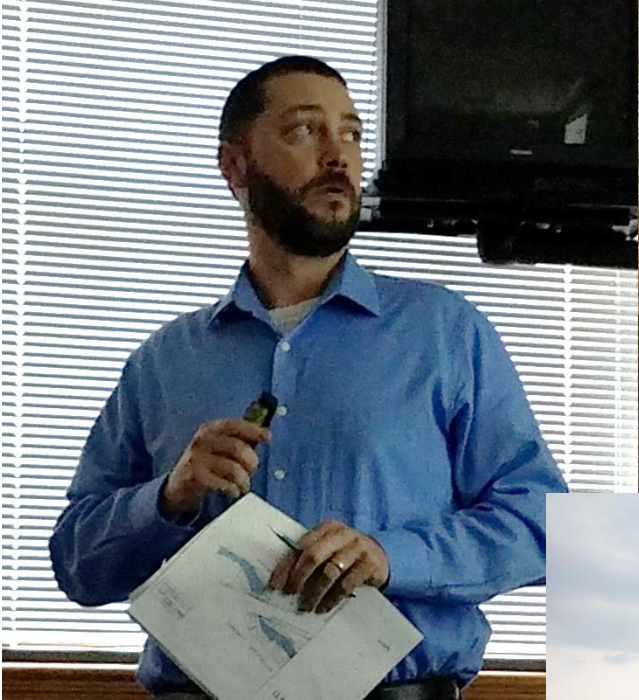


# Technical Assistance & Coordination

- **SME Resource for District Staff**
- **Specialized Programs (Chesapeake Bay TMDL, Air & Noise)**
- **Technical Advisor on Design-Build and P3**
- **Tools/Guidance for Locally Administered Projects**
- **Environmental Research**



# Environmental Staff in Action





# Environmental Staff in Action

