



COMMONWEALTH of VIRGINIA

Commonwealth Transportation Board

Aubrey L. Layne, Jr.
Chairman

1401 East Broad Street
Richmond, Virginia 23219

(804) 786-2701
Fax: (804) 786-2940

Agenda item # 4

RESOLUTION OF THE COMMONWEALTH TRANSPORTATION BOARD

February 16, 2017

MOTION

Made By: Mr. Malbon, Seconded By: Ms. DeTuncq
Action: Motion Carried, Unanimously

**Title: Approval of Proposed Limited Access Control Changes
(LACCs) for Interstate 64 Capacity Improvements – Segment II
City of Newport News, James City County, and York County**

WHEREAS, on October 4, 1956, the State Highway Commission, predecessor to the Commonwealth Transportation Board (CTB), designated the Interstate Highway System to be Limited Access Highways and in accordance with §33.2-401 of the *Code of Virginia*, established that the limited access line locations and limits shall be as shown on the final engineering plans for the original highway project construction on the interstates, including I-64; and

WHEREAS, a Design Public Hearing was held at the Double Tree Hotel Williamsburg, 50 Kingsmill Road, Williamsburg, VA 23185 on Thursday April 30, 2015, between 4:00 pm and 7:00 pm for the purpose of considering the proposed State Highway Project 0064-965-264, P101, R201, C501, B627, B628, B629, B630, B631, B632, B633, B634, B635, D603, D604, D605, D606, D607, D608 UPC 106665 (“64 Peninsula Widening – Segment II Project” or “Project”); and

WHEREAS, the proposed Project involves design and construction of one additional lane and full shoulder in each direction, with the widening occurring in the median of the existing Interstate 64 from 1.05 miles west of Route 199 (Humelsine Parkway/Marquis Center Parkway) to 0.54 miles east of Route 238 (Yorktown Road); and

Resolution of the Board
Interstate 64 Capacity Improvements
Segment II
Proposed Limited Access Control Changes (LACC)
City of Newport News, James City County, and York County
February 16, 2017
Page Two

WHEREAS, the proposed Project includes the addition of one lane and full shoulder in each direction, with widening occurring in the median of the existing Interstate and widening of existing bridges within the corridor to the inside, resulting in a need to modify the Limited Access Control Line along I-64, (Limited Access Control Change or LACC) in the City of Newport News and in York County; and

WHEREAS, proper notice of the Design Public Hearing was given in advance, and all those present were given a full opportunity to express their opinions and recommendations for or against the proposed project as presented, and their statements being duly recorded; and

WHEREAS, plans presented at the Design Public Hearing indicated that the changes in the limited access control lines as shown could be adjusted to accommodate the final location of all facilities shown on the plans as built; and

WHEREAS, the economic, social and environmental effects of the proposed project have been duly examined and given proper consideration, and this evidence, along with all other, approved by the Federal Highway Administration (FHWA) has been carefully reviewed; and

WHEREAS, the traffic analysis for the project was completed by VDOT and included in the Interstate 64 Peninsula Study, Environmental Impact Statement, approved November 26, 2013 and the Traffic Technical Memorandum, dated December 2013; and

WHEREAS, the Interchange and Mainline Operational Analysis was completed by VDOT for this segment of Interstate I-64 on the peninsula in the City of Newport News, York County and James City County, Virginia. This is in accordance with the previously approved Interstate 64 Peninsula Final Environmental Impact Statement (FEIS). This was completed March 9, 2015 and approved April 8, 2015; and

WHEREAS, this project is in compliance with the National Environmental Policy Act (NEPA) requirements and an Environmental Impact Statement has been developed in cooperation with the Federal Highway Administration (FHWA) and in accordance with federal guidelines and the Record of Decision provided by FHWA on April 21, 2014; and

WHEREAS, the City of Newport News City Manager has, by letter dated January 28, 2015, endorsed the project and the proposed LACCs as presented by the Design-Build Team; and

WHEREAS, the County of York County Administrator has, by letter dated January 4, 2017, endorsed the project and the proposed LACCs as presented by the Design-Build Team; and

Resolution of the Board
Interstate 64 Capacity Improvements
Segment II
Proposed Limited Access Control Changes (LACC)
City of Newport News, James City County, and York County
February 16, 2017
Page Three

WHEREAS, the Hampton Roads Transportation Planning Organization has endorsed this Project by resolution dated June 20, 2013; and

WHEREAS, the FHWA has provided the requisite approval for State Highway Project 0064-965-264, P101, R201, C501, B627, B628, B629, B630, B631, B632, B633, B634, B635, D603, D604, D605, D606, D607, D608 UPC 106665 and the proposed Design-Build Team LACCs; and

WHEREAS, the Chief Engineer has determined that the proposed change will not adversely affect the safety or operation of the highways; and

WHEREAS, this project is located in an area designated as attainment for air quality; and

WHEREAS, the Department has reviewed the requested change and determined that all requirements of 24 VAC 30-401-20 have been met; and

WHEREAS, VDOT recommends approval of the modification of the Limited Access Control along I-64 and the additional right of way needed for drainage and storm water management facilities as shown on the Design-Build Team plans, Limited Access Line Adjustment Exhibit and the Limited Access Control Point table.

NOW, THEREFORE, BE IT RESOLVED, in accordance with the statutes of the Commonwealth of Virginia and policies of the CTB, that the CTB hereby finds and concurs in the determinations and recommendations of VDOT made herein and directs that the I-64 corridor continue to be designated as a Limited Access Highway with the limited access control being modified and/or established as proposed by the Design Build Team shown on the attached exhibits and the limited access control point table.

BE IT FURTHER RESOLVED, the Commissioner of Highways is authorized to execute any and all documents necessary to implement such changes.

#####

CTB Decision Brief
Proposed Limited Access Control Changes
I-64 Capacity Improvements Segment II
Project 0064-965-264, P101, R201, C501, B627, B628, B629, B630, B631, B632, B633, B634,
B635, D603, D604, D605, D606, D607, D608;
UPC 106665
City of Newport News, James City County, and York County

Issues: The Interstate 64 in the Newport News area is congested. This project will improve capacity.

The proposed project, consisting of State Highway Project 0064-965-264, P101, R201, C501, B627, B628, B629, B630, B631, B632, B633, B634, B635, D603, D604, D605, D606, D607, D608; UPC 106665 (“I-64 Capacity Improvements Segment II” or “Project”) will include the addition of one lane and full shoulder in each direction, with widening occurring in the median of the existing Interstate. Existing bridges within the corridor will be widened to the inside.

The project will require modification to the Limited Access Control Line along I-64, (Limited Access Control Change or LACC) in the City of Newport News and in York County, as proposed and noted in the attachment. Pursuant to §33.2-401, the Commonwealth Transportation Board (CTB) must approve this LACC and the Virginia Department of Transportation (VDOT) recommends that the CTB approve said LACC.

Facts:

- This change is not covered by the General Rules and Regulations of the CTB or by the Land Use Permit Regulations, thus requiring action by the CTB.
- The written determination of the Chief Engineer regarding this proposed project is attached for your consideration.
- A Design Public Hearing was held on Thursday April 30, 2015, between 4:00 pm and 7:00 pm at the Double Tree Hotel Williamsburg, 50 Kingsmill Road, Williamsburg, VA 23185.
- Proper notice was given in advance, and all those present were given a full opportunity to express their opinions and recommendations for or against the proposed Project as presented, and their statements being duly recorded in emails and comment sheets.
- The traffic analysis for the project was completed by VDOT and included in the December 2013 Interstate 64 Peninsula Study Environmental Impact Statement and the Traffic Technical Memorandum, dated December 2013.
- The Interchange and Mainline Operational Analysis was completed by VDOT for this segment of Interstate I-64 on the peninsula in the City of Newport News, York County and James City County, Virginia. This was completed March 9, 2015 and approved April 8, 2015.
- In cooperation with the Federal Highway Administration (FHWA) VDOT has evaluated the I-64 corridor from the City of Richmond to the City of Hampton through the Interstate 64 Peninsula Study Environmental Impact Statement.

- The City of Newport News' City Manager has, by letter dated January 28, 2015, endorsed the Project and the proposed limited access control changes as presented by the Design Build Team.
- The County of York County Administrator has, by letter dated January 4, 2017, endorsed the Project and the proposed limited access control changes as presented by the Design Build Team.
- The Hampton Roads Transportation Planning Organization has endorsed this Project by resolution dated June 20, 2013.
- The FHWA has provided the requisite approval December 3, 2015, for the proposed LACCs based on the design of the Design Build Team.
- The Chief Engineer has determined that the proposed change will not adversely affect the safety or operation of the highways.
- This project is located in an area designated as attainment for air quality.
- The proposed LACC is in compliance with the polices and requirements of the CTB contained in Title 24, Agency 30, Chapter 401 of the *Virginia Administrative Code*.

Recommendations: It is recommended that, pursuant to §33.2-401 of the *Code of Virginia*, and policies of the CTB, that the I-64 corridor continue to be designated as a Limited Access Highway as described in the resolution and that the CTB approve, by resolution, the limited access right of way as modified by the LACC, developed by the Design Build Team. This action will modify the limited access line and right of way previously approved by the CTB's predecessor, the State Highway Commission, on October 4, 1956.

Action Required by CTB: Virginia Code § 33.2-401 requires a majority vote of the CTB to approve the recommended LACC. The CTB will be presented with a resolution for a formal vote to approve the limited access right of way modification, developed by the Design Build Team, and to provide the Commissioner of Highways the requisite authority to execute all documents necessary to implement the LACC.

Result, if Approved: The Commissioner of Highways will be authorized to execute any and all documents needed to comply with the resolution, and the I-64 Capacity Improvement Project will move forward.

Options: Approve, Deny, or Defer.

Public Comments/Reactions: There were approximately sixty-three (63) citizens in attendance at the public hearing and twenty (20) submitted written comments during the meeting. There were also three (3) email comments submitted to VDOT. A brief analysis of the responses indicates that the majority eleven (11) of those commenting on the plans are in favor of the project; nine (9) supported the project with recommended changes, two (2) were not in favor of the project.



COMMONWEALTH of VIRGINIA

DEPARTMENT OF TRANSPORTATION
1401 EAST BROAD STREET
RICHMOND, VIRGINIA 23219 2000

Charles A. Kilpatrick, P.E.
Commissioner

February 16, 2017

The Honorable Aubrey L. Layne, Jr.
The Honorable Charles A. Kilpatrick, P. E.
The Honorable Jennifer Mitchell
The Honorable Jerry L. Stinson II
The Honorable Henry "Hap" Conners, Jr.
The Honorable Mary H. Hynes
The Honorable Alison DeTuncq
The Honorable Shannon Valentine
The Honorable Gary Garczynski
The Honorable Carlos M. Brown
The Honorable William H. Fralin, Jr.
The Honorable F. Dixon Whitworth, Jr.
The Honorable E. Scott Kasprowicz
The Honorable Court G. Rosen
The Honorable Marty Williams
The Honorable John Malbon
The Honorable Greg Yates

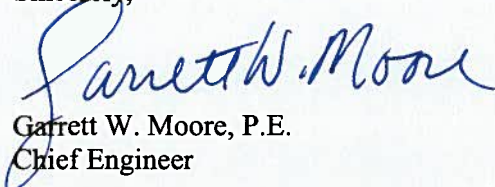
Subject: Approval of Limited Access Control Changes (LACCs) for I-64 Capacity Improvement Segment II Project in the City of Newport News.

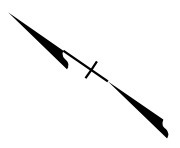
Dear Commonwealth Transportation Board Members:

The Department initiated the above request for limited access control changes for your consideration. The proposed limited access control changes shown above on the plans for State Project 0064-965-264, P101, R201, C501, B627, B628, B629, B630, B631, B632, B633, B634, B635, D603, D604, D605, D606, D607, D608; UPC 106665 has been determined as a necessary design features and approved by the Department's staff in conjunction with the proposed improvements on Interstate 64 to provide congestion relief through capacity improvements on Interstate 64 in the City of Newport News, York County and James City County as part of said Project to serve the traveling public.

I have reviewed the Department's staff recommendations and determined that approving this modification of the limited access control will not adversely affect the safety or operation of the affected highway network. I have determined that this request should be considered by the Board.

Sincerely,


Garrett W. Moore, P.E.
Chief Engineer



Exst. R/W & Limited Access

2125

2126

2127

2128

2129

2130

2131

2132

2133

2134

I-64 WB

1125

1126

1127

1128

1129

1130

1131

1132

1133

I-64 EB

Exst. R/W & Limited Access

R • 22825.56' L • 2792.37'

R • 22825.56' L • 141.67'

R • 22754.12' L • 116.74'

S29°08'25"E 200.04'

S39°42'12"E 150.28'

97.47' -75.45'

59.97' -18.37' S22°E

139.31' -18.63' N32°27'19"W 122.87'

143.73' -42.18'

N39°42'12"W 292.87'

114.58' -35.25'

(N31° 27' 30"W 150.19') 150.38'

Proposed R/W & Limited Access Line
Begin Prop. R/W & Limited Access Sta. 1127+75.45

End Prop. R/W & Limited Access
Sta. 1132+35.25

001

ROBERT TRAVIS ARMISTEAD, JR.
& KAY ARMISTEAD, TRUSTEES
INSTR. #150002397
D.B. 539, PG. 36
P.B. 6, PG. 125
GPIN# G14b-3985-2606
4.67 AC.

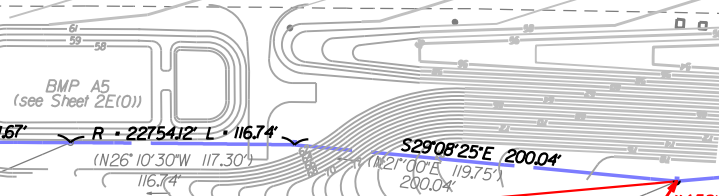
002

SAMUEL E. BROWN
INSTR. #040005211
P.B. 8, PG. 423
GPIN# G14d-4000-2284
4.68 AC.

SAMUEL E. BROWN
INSTR. #040005211
P.B. 8, PG. 423
GPIN# G14d-4133-2086
2.39 AC.

JOYCE M. JACKSON
INSTR. #12000010975
GPIN# G14D-4111-2020
3.34 AC.

HELEN D. LEE EST.
DB. 879 P. 138
PB. 5 P. 203
GPIN# G14D-4261-1782
5.46 AC.



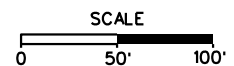
Pipe - 36.44 (E.B.L) 66.51'

R/W Mon - 53.18 (E.B.L) 65.34'

R/W Mon - 52.66 (E.B.L) 80.27'

(S55° 39' 4" E 2602.6')

(S5° 00' E 1941.04') 1940.52'



I-64 Capacity Improvements Segment II Change In Limited Access York County		
UPC 106665	PROJECT 0064-965-264	SHEET NO. 1 of 9

CIVIL WAR PRESERVATION TRUST
 D.B. 765, PG. 99
 P.B. II, PG. 686
 GPIN*H14c-0514-1246
 23.89 Ac.

R/W Mon +4.48(WBL) 66.88'

R/W Mon +5.49(WBL) 82.31'

R/W Mon +5.66(WBL) 66.00'

Var. Width
 Va. Power Easement

Exist. R/W & Limited Access

Exist. R/W & Limited Access

2141

2142

2143

2144

2145

2146

2147

2148

2149

I-64 WB

1140

1141

1142

1143

1144

1145

1146

1147

1148

1149

N-3,625,469.59
 E-12,020,658.24

S31°24'35"E

I-64 EB

N-3,626,048.20
 E-12,020,304.91

(S20°29'45"E 233.71')
 233.81'

N31°27'40"W
 81.23'

S31°27'40"E 495.05'
 (see Sheet 22.10)

S31°27'40"E
 403.98'

IP -92.71(E)BL
 67.84'

IP -70.92(E)BL
 68.21'

IP -26.51(E)BL
 68.43'

(S48°45'40"W 359.48')
 (N31°45'51"W 359.47')

142.51'
 99.20'
 -92.11'
 141.71'
 -92.18'

141.71'
 -92.18'

181.71'
 -92.30'

181.71'
 -92.30'

(205.50')
 -92.28'

N31°35'16"W 494.99'

End Prop. R/W & Limited Access Sta. 1147+87.16

140.18'
 -87.16'

140.18'
 -87.16'

180.18'
 -87.28'

(205.48')
 -87.16'

(205.48')
 -87.16'

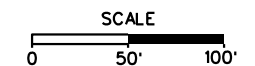
Proposed Permanent Drainage Easement
 Temporary Construction Easement

004

**ECONOMIC DEV AUTHORITY
 OF YORK COUNTY VA**

Lot 3B
 INSTR. #140008763
 Plat. INSTR. # 160021226
 GPIN*H13a-0076-4610
 21.019 AC.

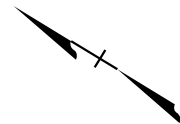
EDITH M. LEE
 D.B. 167, PG. 431
 D.B. 194, PG. 731
 GPIN*H14c-0029-0912
 3.4 AC.



I-64 Capacity Improvements Segment II Change In Limited Access York County		
UPC 106665	PROJECT 0064-965-264	SHEET NO. 2 of 9

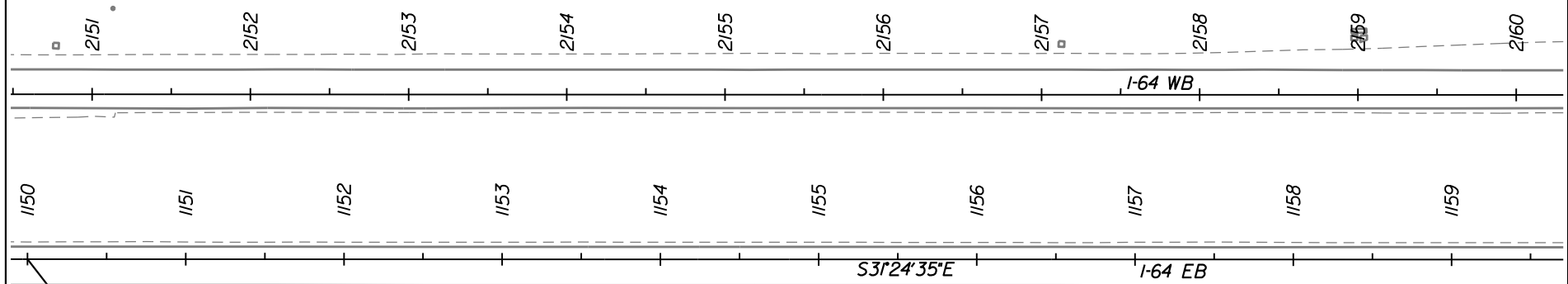
CIVIL WAR PRESERVATION TRUST

D.B. 765, PG. 99
 P.B. II, PG. 686
 GPIN*H14c-0514-1246
 23.89 Ac.

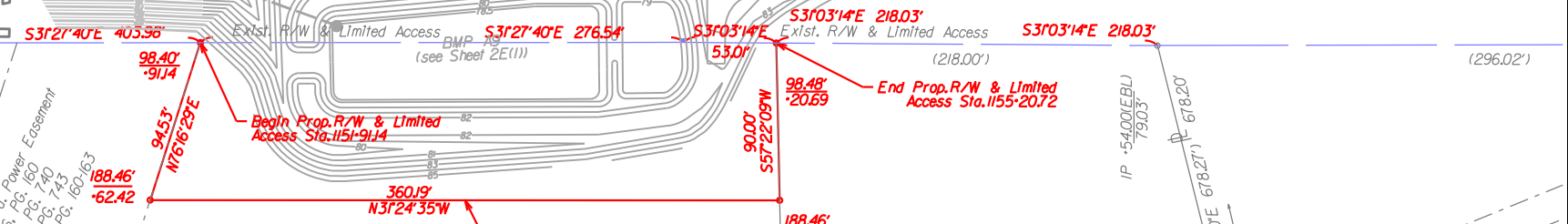


R/W Mon +54.24(WBL)
 67.35'

Access (S31°25'26"E 1950.00') → Exst. R/W & Limited Access



N=3,625,298.90
 E=12,020,762.47

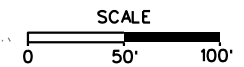


Var. Width & 100' Va. Power Easement
 D.B. 166, PG. 160
 D.B. 172, PG. 740
 Plat: SHPB 2, PG. 160-163

004
 ECONOMIC DEV AUTHORITY
 OF YORK COUNTY VA
 Lot 3B
 INSTR.*140008763
 Plat: INSTR.* 160021226
 GPIN*H13a-0076-4610
 21.019 AC.

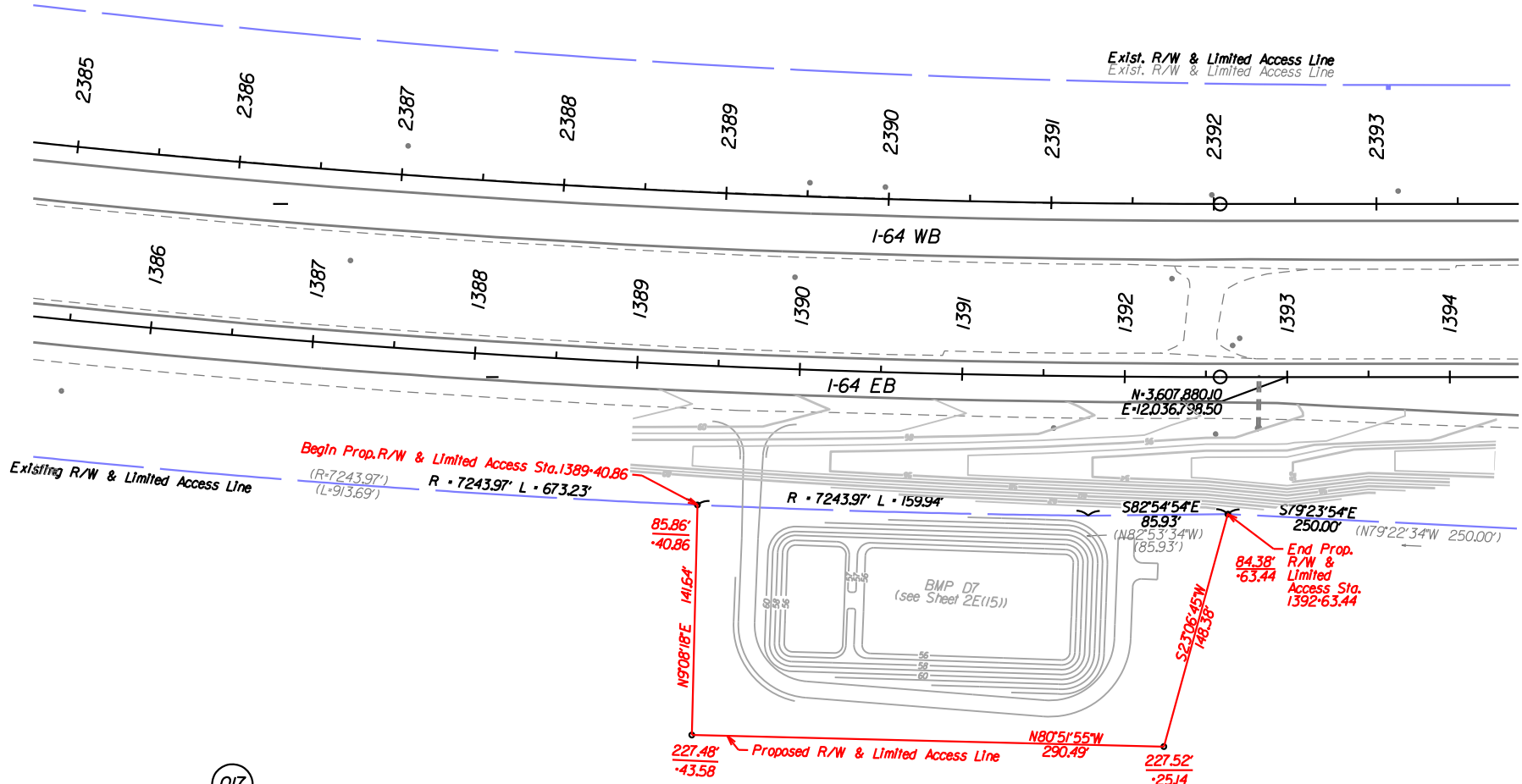
ECONOMIC DEV AUTHORITY
 OF YORK COUNTY VA
 Lot 3A
 INSTR.*140008763
 Plat: INSTR.* 160021226
 GPIN*H13a-0076-4610
 4.282 AC.

BA KERNER
 STAFFORD
 INSTR.*14
 INSTR.*14
 P.B. II, f
 GPIN*H13a-C
 4.05



I-64 Capacity Improvements Segment II Change In Limited Access York County		
UPC 106665	PROJECT 0064-965-264	SHEET NO. 3 of 9

UNITED STATES OF AMERICA
 9257 AC.
 Tax# K12b-4637-4291



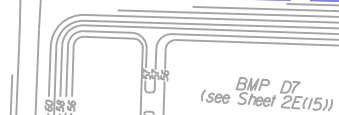
Existing R/W & Limited Access Line

Begin Prop. R/W & Limited Access Sta. 1389+40.86

R • 7243.97' L • 15994'

582°54'54"E 85.93'

S79°23'54"E 250.00'

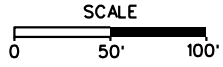


Proposed R/W & Limited Access Line

End Prop. R/W & Limited Access Sta. 1392+63.44

017

COMMONWEALTH OF VIRGINIA
 DB782 PG63
 34054 AC.
 Tax# 6010100012



I-64 Capacity Improvements Segment II		
Change In Limited Access City of Newport News		
UPC 106665	PROJECT 0064-965-264	SHEET NO. 4 of 9

011

CELLCO PARTNERSHIP
DBI693 PG536
11.181 AC.
Tax* 004000102

CELLCO PARTNERSHIP
DBI693 PG544
5.50 AC.
Tax* 003000303



IP-17-21(WBL) 85.00'
IP-21-09(WBL) 62.44'

Proposed R/W & Limited Access Line
S55°04'15"E 276.79'

208.24' -21.46'
144.04' -91.54'
S55°45'09"W

End Prop. R/W & Limited Access Sta. 2445+91.54

Begin Prop. R/W & Limited Access Sta. 2442+44.53

Exist. R/W & Limited Access Line

N55°00'34"W 44.54'

N55°00'34"W 347.00'

S55°00'34"E 294.46'

2438

2439

2440

2441

2442

2443

2444

2445

2446

2447

I-64 WB

N=3,605,564.37
E=12,041,505.98

1438

1439

1440

1441

1442

1443

1444

1445

1446

1447

I-64 EB

N54°39'32"W 94.40'

Exist. R/W & Limited Access Line
S54°39'32"E 334.31'

102.20' -32.07'

N34°55'47"E 72.71'

N55°04'13"W 214.20'

174.91' -32.07'

Proposed R/W & Limited Access Line

174.91' -46.27'

104.60' -66.37'

S34°55'47"W 44.81'

N67°03'26"W 122.78'

149.41' -66.37'

S54°39'32"E 78.48'

End Prop. R/W & Limited Access Sta. 1441+66.37

S55°22'0"E 670.16'

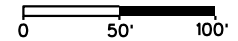
Begin Prop. R/W & Limited Access Sta. 1438+32.07

012

ECONOMIC DEVELOPMENT AUTHORITY
OF THE CITY OF NEWPORT NEWS

Inst.* 0013962155
143.6067 AC.
Tax* 008000102

SCALE



I-64 Capacity Improvements
Segment II

Change In Limited Access
City of Newport News

UPC
106665

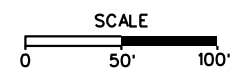
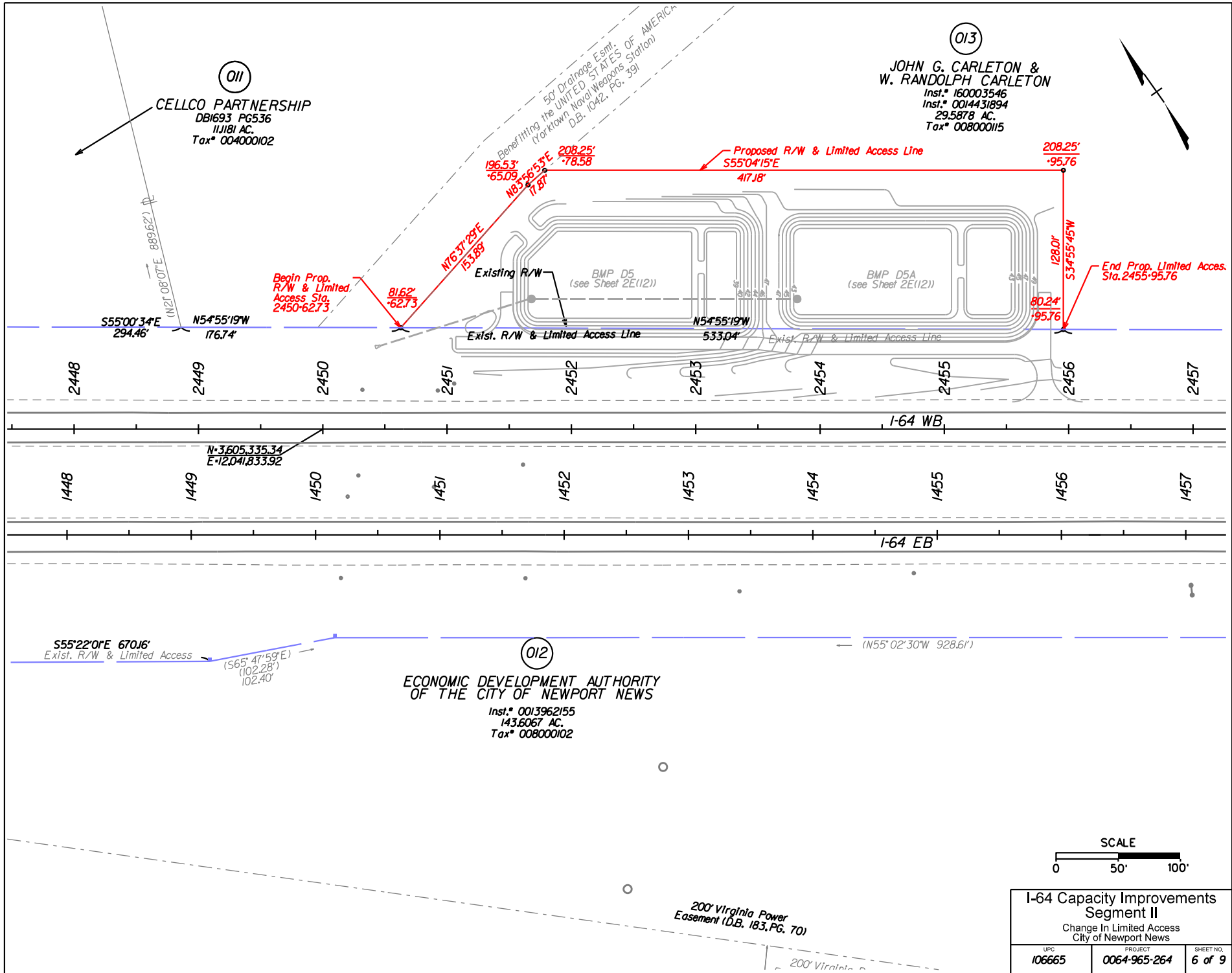
PROJECT
0064-965-264

SHEET NO.
5 of 9

011
CELLCO PARTNERSHIP
 DB1693 PG536
 11,181 AC.
 Tax* 004000102

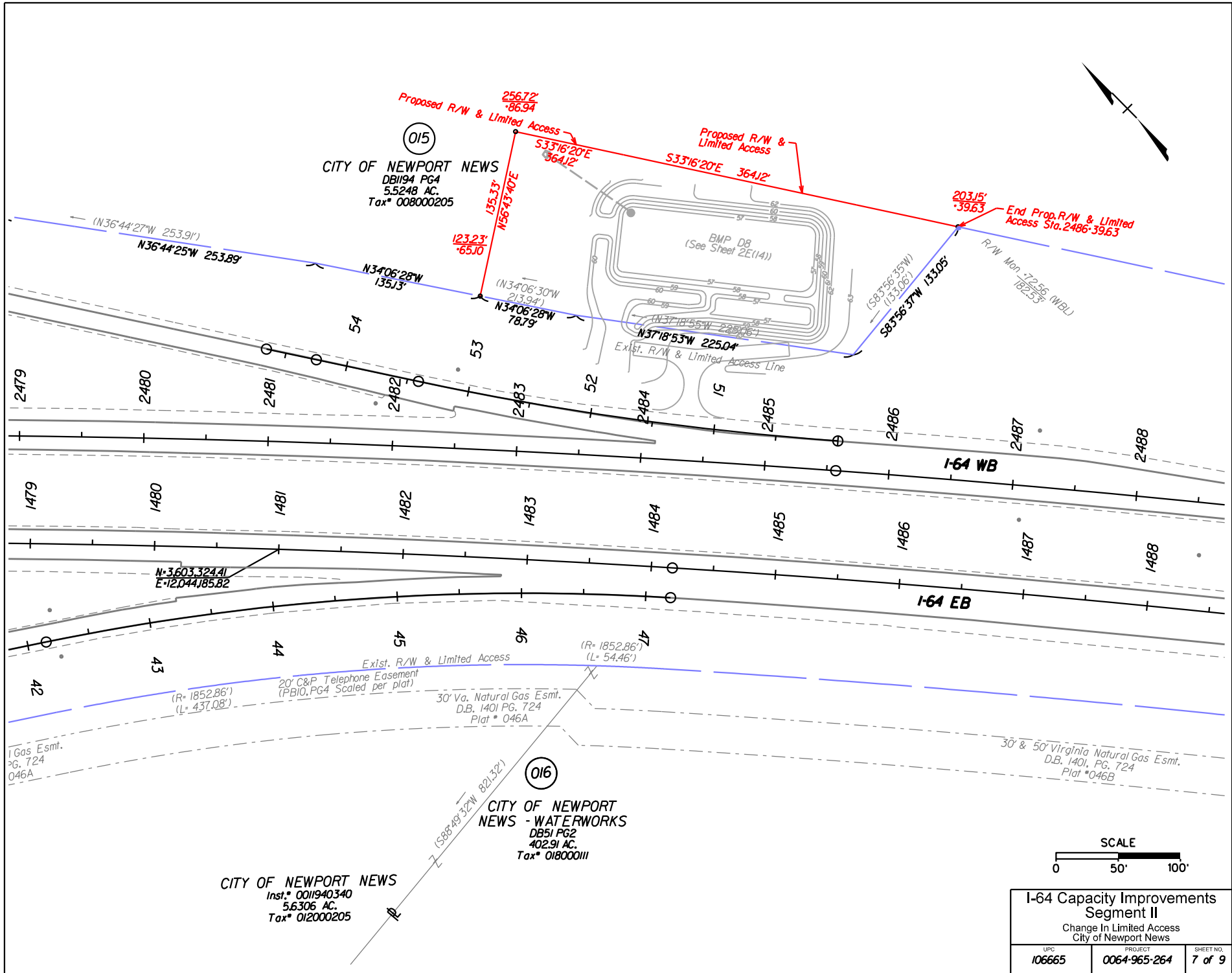
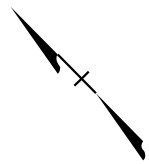
013
**JOHN G. CARLETON &
 W. RANDOLPH CARLETON**
 Inst.* 160003546
 Inst.* 0014431894
 29,5878 AC.
 Tax* 008000115

012
**ECONOMIC DEVELOPMENT AUTHORITY
 OF THE CITY OF NEWPORT NEWS**
 Inst.* 0013962155
 143,6067 AC.
 Tax* 008000102



I-64 Capacity Improvements Segment II		
Change In Limited Access City of Newport News		
UPC 106665	PROJECT 0064-965-264	SHEET NO. 6 of 9

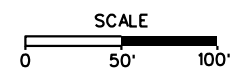
1/16/2007



015
 CITY OF NEWPORT NEWS
 DB1194 PG4
 5.5248 AC.
 Tax# 008000205

016
 CITY OF NEWPORT NEWS - WATERWORKS
 DB51 PG2
 402.91 AC.
 Tax# 018000111

CITY OF NEWPORT NEWS
 Inst.# 0011940340
 5.6306 AC.
 Tax# 012000205

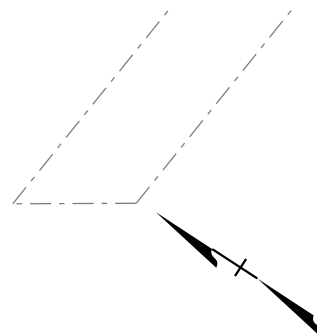


I-64 Capacity Improvements Segment II		
Change In Limited Access City of Newport News		
UPC 106665	PROJECT 0064-965-264	SHEET NO. 7 of 9

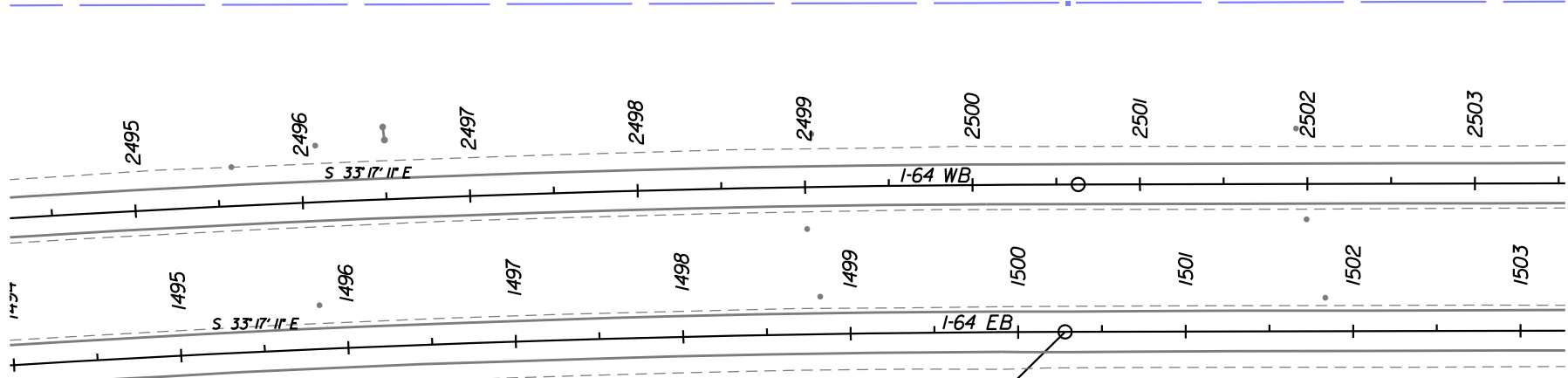
1/6/2017

CITY OF NEWPORT NEWS
 DB1194 PG4
 5.5248 AC.
 Tax# 008000205

R/W Mon -85.90 (WBL)
 91.55'



Exist. R/W & Limited Access Line



R • 10.662.50'
 L • 388.17'
 DELTA • 2° 05' 09"
 CB • S 35° 30' 04" E
 C • 388.15'

30' & 50' Virginia Natural Gas Esmt.
 D.B. 1401, PG. 724
 Plot #046B

S34°23'58"E 193.90'

N-3.601.815.90
 E-120.45.382.32

N27°04'57"W
 55.43'

S27°04'57"E 128.86'

S27°04'57"E
 159.78'

(S33°17'36"E 300.16')

Begin Prop. R/W & Limited Access Sta. 1498+70.76

145.31' -21.94'

147.95' -74.81'

End Prop. R/W & Limited Access Sta. 1500+00.08

N53°27'21"E 163.91'

309.31' -28.67'

Proposed R/W & Limited Access Line

N36°32'39"W 287.41'

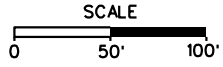
299.68' -24.30'

BMP D6
 (See Sheet 2E(113))

R/W Mon -77.00 (EBL)
 70.88'

016

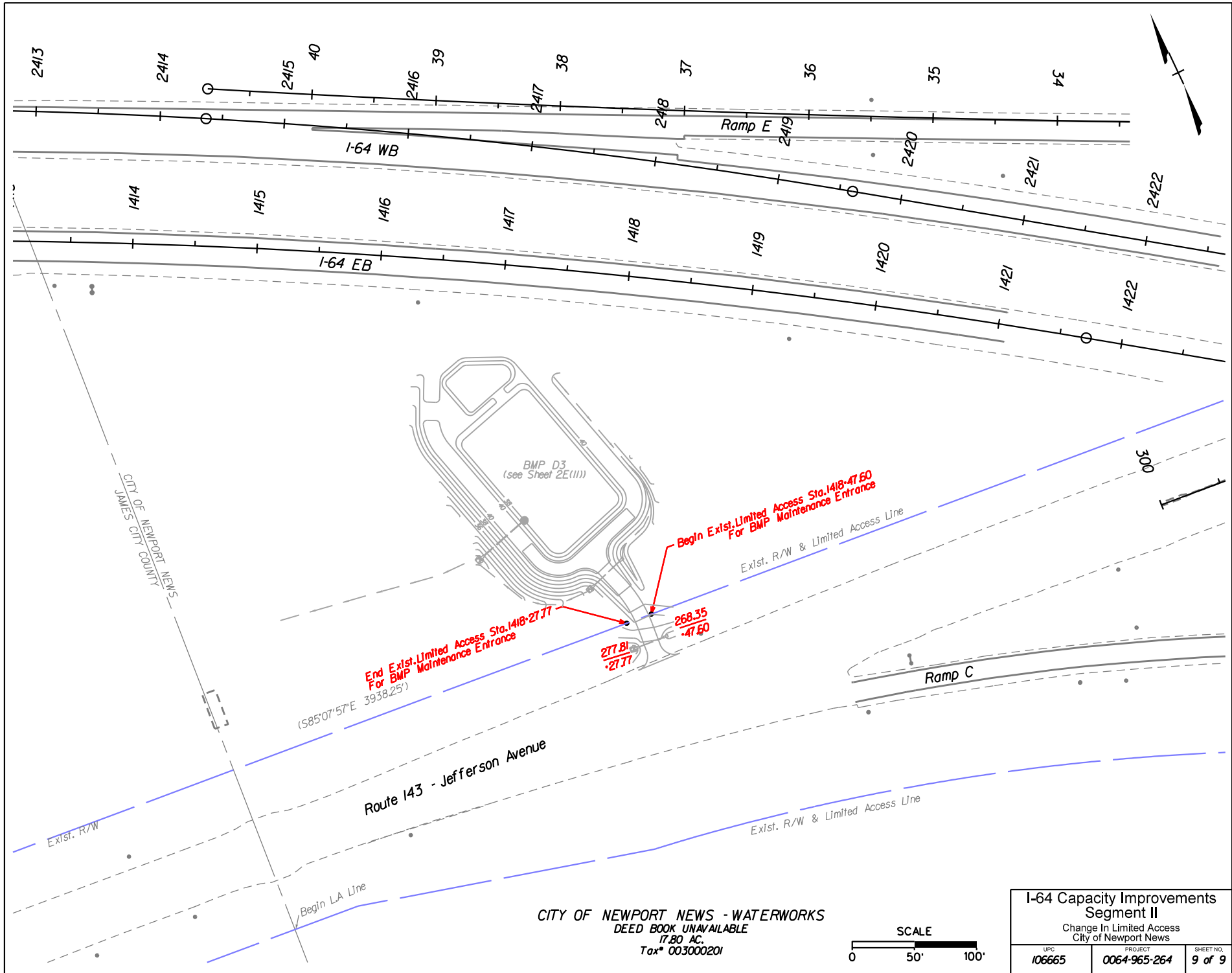
CITY OF NEWPORT NEWS - WATERWORKS
 DB51 PG2
 402.91 AC.
 Tax# 018000111



I-64 Capacity Improvements Segment II

Change In Limited Access
 City of Newport News

UPC 106665	PROJECT 0064-965-264	SHEET NO. 8 of 9
---------------	-------------------------	---------------------



End Exst. Limited Access Sta. 1418+27.77
For BMP Maintenance Entrance

Begin Exst. Limited Access Sta. 1418+47.60
For BMP Maintenance Entrance

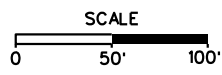
277.81
-27.77

268.35
-47.60

(S85°07'57"E 3938.25')

Route 143 - Jefferson Avenue

CITY OF NEWPORT NEWS - WATERWORKS
 DEED BOOK UNAVAILABLE
 17.80 AC.
 Tax# 003000201



I-64 Capacity Improvements Segment II		
Change In Limited Access City of Newport News		
UPC 106665	PROJECT 0064-965-264	SHEET NO. 9 of 9

1/16/2007

CIVIL WAR PRESERVATION TRUST
 D.B. 765, PG. 99
 P.B. II, PG. 686
 GPIN*H14c-0514-1246
 23.89 Ac.

R/W Mon +4.48(WBL) 66.88'

R/W Mon +5.49(WBL) 82.31'

R/W Mon +5.66(WBL) 66.00'

Var. Width
 Va. Power Easement

Exist. R/W & Limited Access

Exist. R/W & Limited Access

2141

2142

2143

2144

2145

2146

2147

2148

2149

I-64 WB

1140

1141

1142

1143

1144

1145

1146

1147

1148

1149

N-3,625,469.59
 E-12,020,658.24

S31°24'35"E

I-64 EB

N-3,626,048.20
 E-12,020,304.91

(S20°29'45"E 233.71')
 233.81'

N31°27'40"W
 81.23'

S31°27'40"E 495.05'

S31°27'40"E
 403.98'

IP +92.71(E)BL 67.84'

IP -70.92(E)BL 68.21'

IP -26.51(E)BL 68.43'

(S48°45'40"W 359.48')
 (N31°45'51"W 359.47')

EDITH M. LEE
 D.B. 167, PG. 431
 D.B. 194, PG. 731
 GPIN*H14c-0029-0912
 3.4 AC.

Var. Width Virginia
 Natural Gas Easement
 D.B. 636, PG. 648

Begin Prop. R/W & Limited Access
 -92.11 Sta. 1142+92.11

End Prop. R/W & Limited Access
 Sta. 1147+87.16

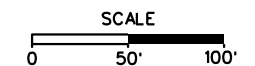
Proposed R/W & Limited Access Line

Proposed Permanent Drainage Easement
 Temporary Construction Easement

004

**ECONOMIC DEV AUTHORITY
 OF YORK COUNTY VA**

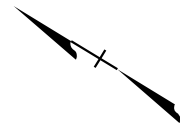
Lot 3B
 INSTR. #140008763
 Plat. INSTR. # 160021226
 GPIN*H13a-0076-4610
 21.019 AC.



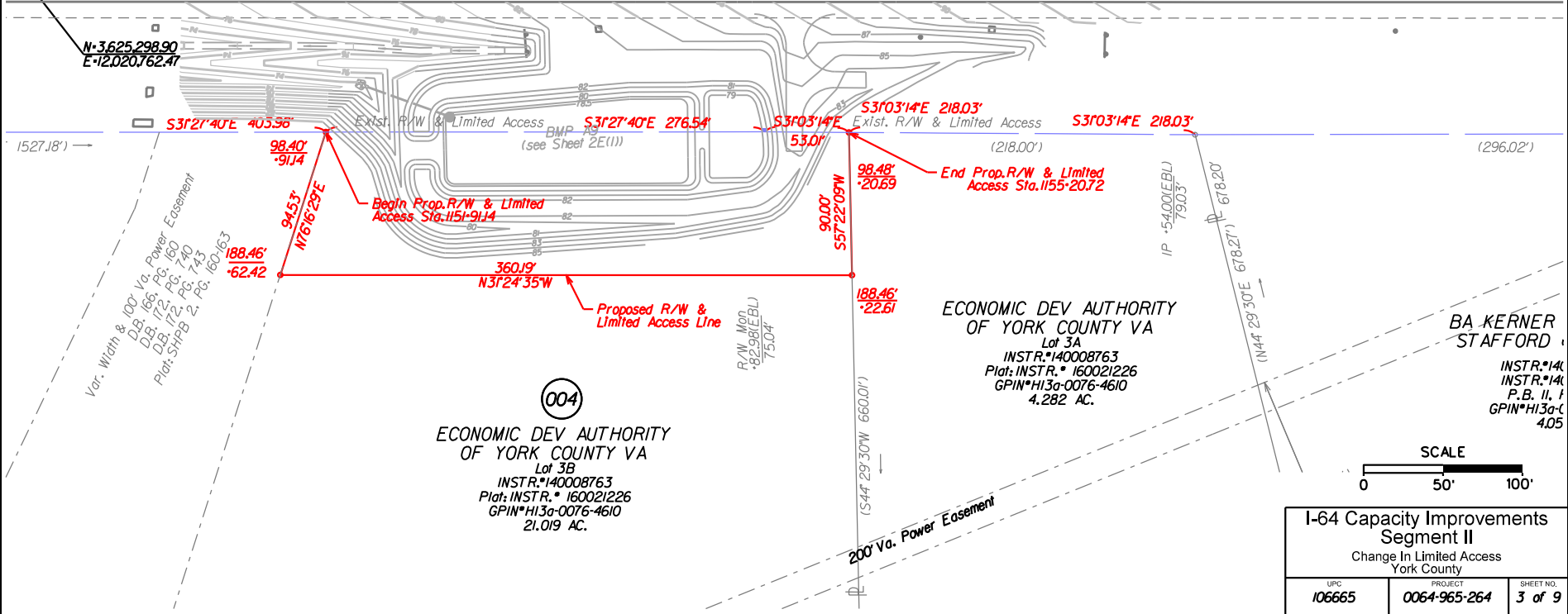
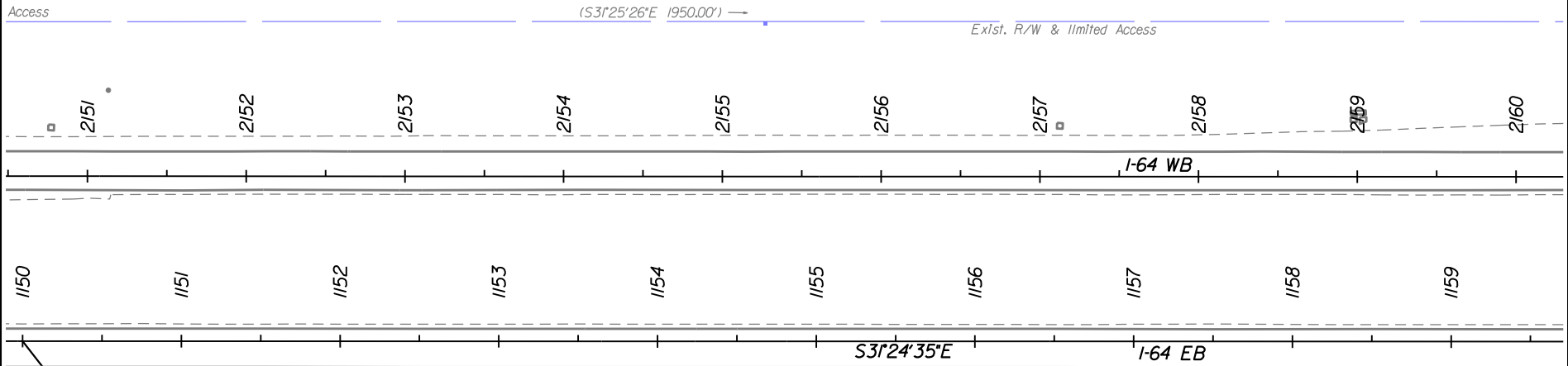
I-64 Capacity Improvements Segment II Change In Limited Access York County		
UPC 106665	PROJECT 0064-965-264	SHEET NO. 2 of 9

CIVIL WAR PRESERVATION TRUST

D.B. 765, PG. 99
 P.B. II, PG. 686
 GPIN*H14c-0514-1246
 23.89 Ac.



R/W Mon +54.24(WBL)
 67.35'



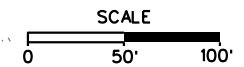
N=3,625,298.90
 E=12,020,762.47

Var. Width & 100' Va. Power Easement
 D.B. 166, PG. 160
 D.B. 172, PG. 740
 Plat: SHPB 2, PG. 160-163

004
 ECONOMIC DEV AUTHORITY
 OF YORK COUNTY VA
 Lot 3B
 INSTR.*140008763
 Plat: INSTR.* 160021226
 GPIN*H13a-0076-4610
 21.019 AC.

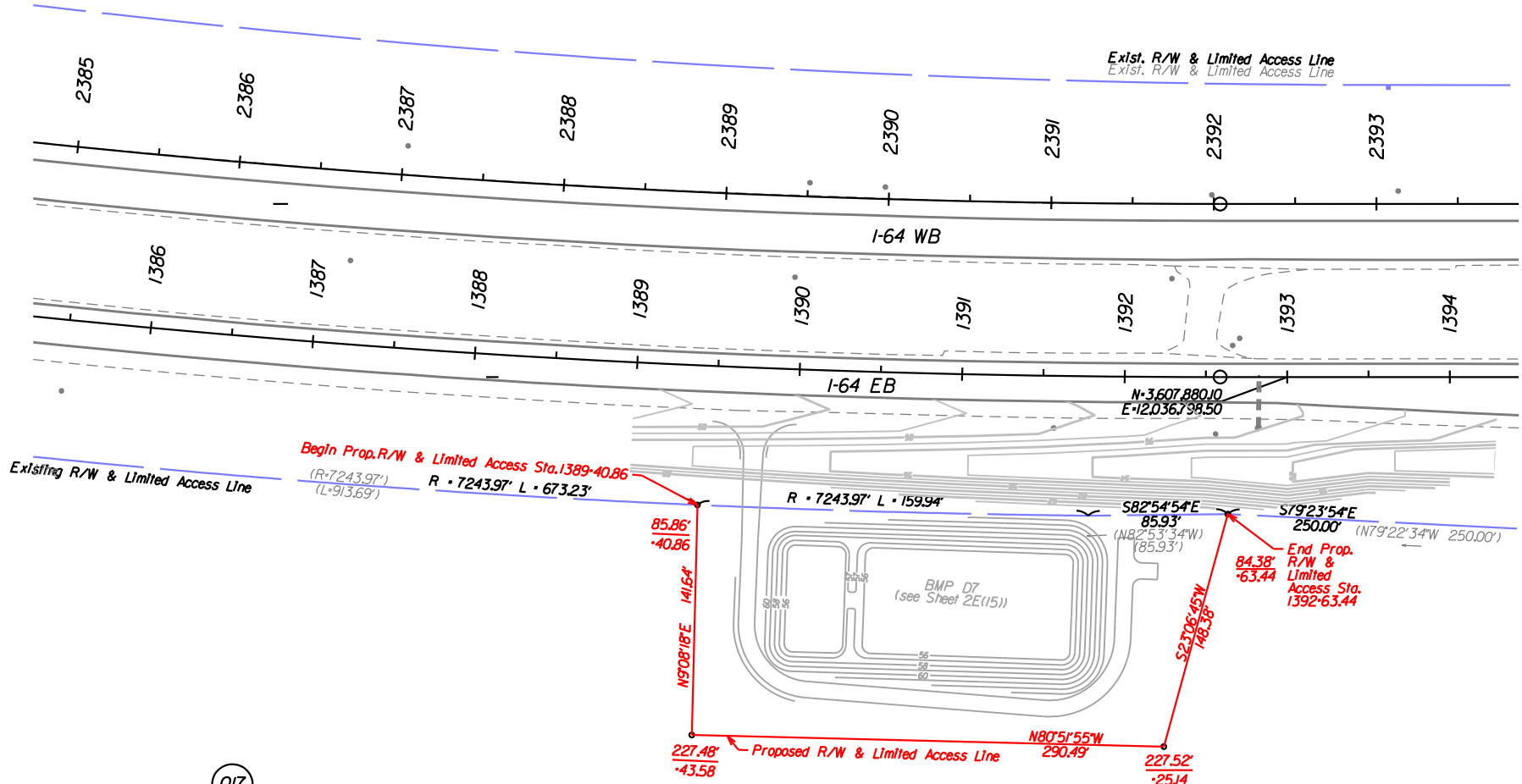
ECONOMIC DEV AUTHORITY
 OF YORK COUNTY VA
 Lot 3A
 INSTR.*140008763
 Plat: INSTR.* 160021226
 GPIN*H13a-0076-4610
 4.282 AC.

BA KERNER
 STAFFORD
 INSTR.*14
 INSTR.*14
 P.B. II, I
 GPIN*H13a-C
 4.05

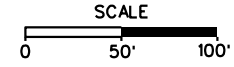


I-64 Capacity Improvements Segment II		
Change In Limited Access York County		
UPC 106665	PROJECT 0064-965-264	SHEET NO. 3 of 9

UNITED STATES OF AMERICA
 9257 AC.
 Tax# K12b-4637-4291



017
 COMMONWEALTH OF VIRGINIA
 DB782 PG63
 34054 AC.
 Tax# 6010100012



I-64 Capacity Improvements Segment II		
Change In Limited Access City of Newport News		
UPC 106665	PROJECT 0064-965-264	SHEET NO. 4 of 9

011

CELLCO PARTNERSHIP
DBI693 PG536
11.181 AC.
Tax* 004000102

CELLCO PARTNERSHIP
DBI693 PG544
5.50 AC.
Tax* 003000303



Proposed R/W & Limited Access Line
S55°04'15"E 276.79'

208.24' -21.46'
144.04' -91.54'
S55°46'09"W

End Prop. R/W & Limited Access Sta. 2445+91.54

Begin Prop. R/W & Limited Access Sta. 2442+44.53

Exst. R/W & Exst. R/W & Limited Access Line

N55°00'34"W 44.54'

N55°00'34"W 347.00'

S55°00'34"E 294.46'

2438

2439

2440

2441

2442

2443

2444

2445

2446

2447

I-64 WB

N=3,605,564.37
E=12,041,505.98

1438

1439

1440

1441

1442

1443

1444

1445

1446

1447

I-64 EB

N54°39'32"W 109.40'

Exst. R/W & Limited Access Line

S54°39'32"E 334.31'

S55°22'0"E 670.16'

102.31' -47.07'
N34°55'47"E 72.60'

174.91' -47.07'

N55°04'13"W 199.20'

174.91' -46.27'

Proposed R/W & Limited Access Line

104.60' -66.37'
S34°55'47"W 44.81'

122.78' -66.37'
N67°03'26"W

78.48'

S54°39'32"E

End Prop. R/W & Limited Access Sta. 1441+66.37

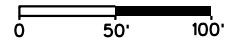
Begin Prop. R/W & Limited Access Sta. 1438+47.07

012

ECONOMIC DEVELOPMENT AUTHORITY
OF THE CITY OF NEWPORT NEWS

Inst.* 0013962155
143.6067 AC.
Tax* 008000102

SCALE



I-64 Capacity Improvements
Segment II

Change In Limited Access
City of Newport News

UPC
106665

PROJECT
0064-965-264

SHEET NO.
5 of 9