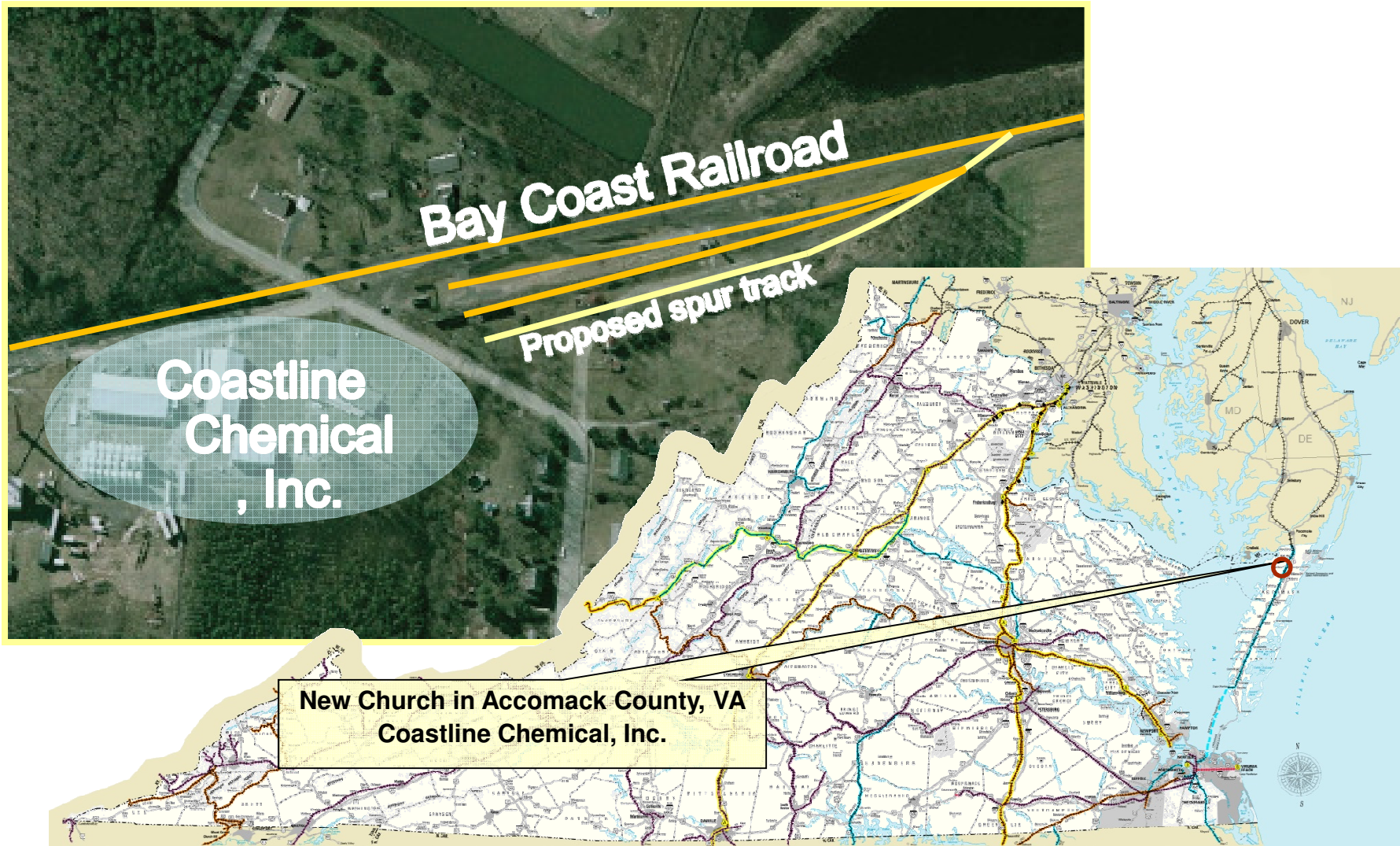


# **Rail Industrial Access Program Application Briefing**

**Coastline Chemical, Inc.  
Accomack County, VA**

**Kevin B. Page  
Chief Operating Officer**

# Project Location



# Project Summary

- ❑ Application for \$365,400
  - Construction of 754 feet of track
  - Served by Bay Coast Railroad
  - Secures rail access for increased rail car shipments
  - Enables business planned and future expansion
  
- ❑ Application details:
  - 75 additional railcars annually
  - \$2.6 Million total estimated project investment
  - \$430,800 estimated cost of rail construction
  - 12 new jobs associated with this expansion
  
- ❑ Application scores 55 of 100 points.
- ❑ Scores greater than 50 are referred to the CTB for consideration.

# Applicant Profile

- ❑ Coastline Chemical, Inc. began as a chemical brokering business in 1999 and has grown into a blending and packaging provider of antifreeze.
- ❑ Currently, CCI has an arrangement to use rail spur tracks owned by Bay Coast Railroad and leased to another local company. However, this is unsecured access and without reliable access prevents expansion of operations.
- ❑ Rail access is vital to expansion of the company to grow current operations and expand into other phases of the manufacturing process.

# Requested Project Funding

<b>Applicant</b>	<b>Fiscal Year of Allocation</b>	<b>Recommended for CTB Allocation</b>	<b>Local Match (Minimum)</b>
<b>Coastline Chemical, Inc.</b>	<b>2015</b>	<b>\$365,400</b>	<b>\$65,400</b>

- ❑ A grantee match is required for amounts above \$300,000
- ❑ Total capital investments in the facility expansion are estimated at \$2.6 Million.
- ❑ Total rail infrastructure costs are estimated at \$430,800.



[www.drpt.virginia.gov](http://www.drpt.virginia.gov)

drptpr@drpt.virginia.gov

804-786-4440