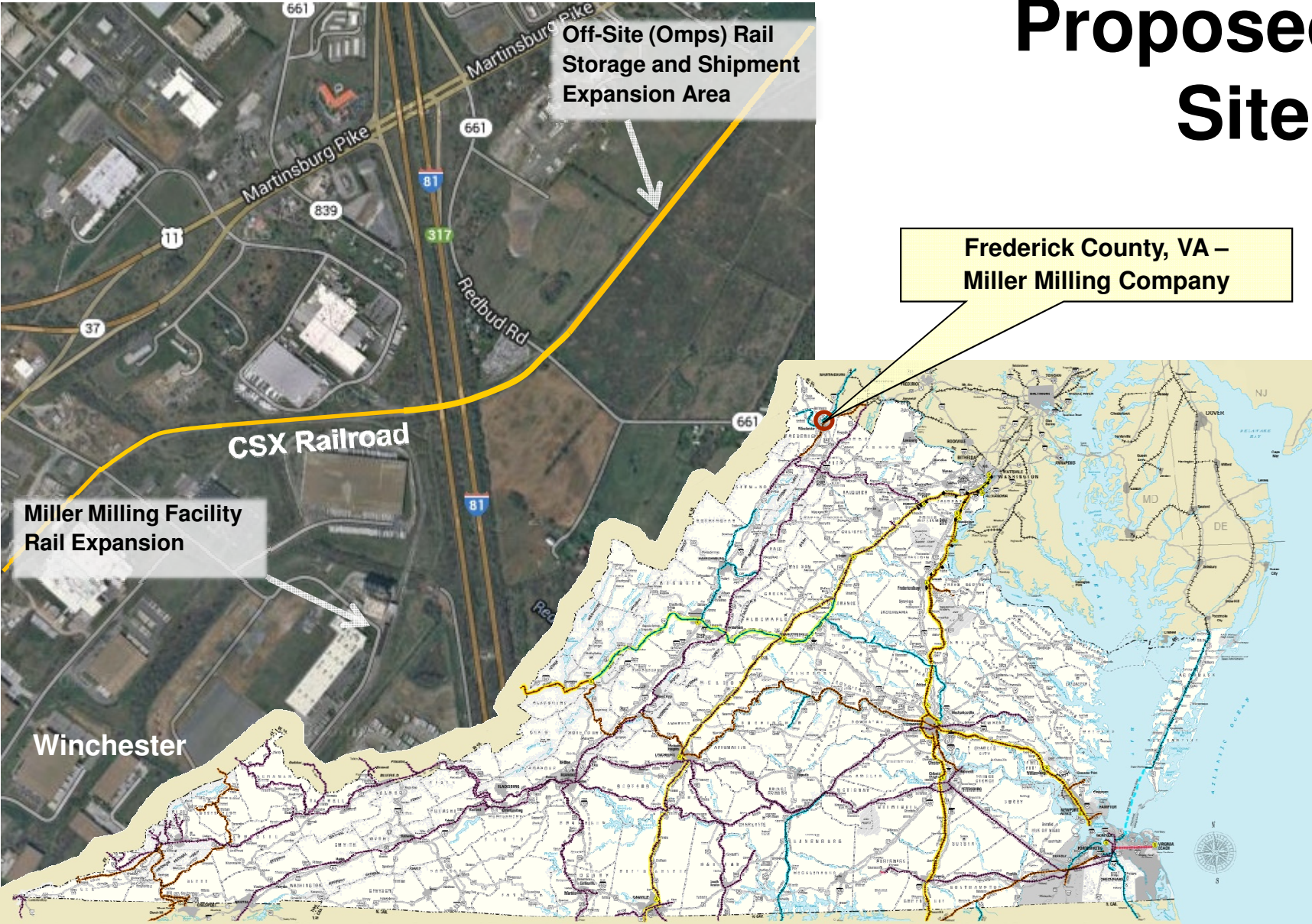


# **Rail Industrial Access Program Application Briefing**

**Miller Milling Company  
Frederick County, VA**

**Kevin B. Page  
Chief of Operating Officer**

# Proposed Sites



October 17, 2013

# Project Summary

- ❑ Application for \$450,000 towards construction of approximately 10,600 feet of track (total between the two sites).
  
- ❑ Application details:
  - 1,500 additional railcars annually
  - \$15.4 Million total estimated project investment
  - \$4.7 Million estimated cost of rail construction
  - 6-8 new jobs associated with this expansion
  
- ❑ Application scores 66 of 100 points. Scores greater than 50 are referred to the CTB for consideration.

# Applicant Profile

- ❑ 110 car shuttle trains are the most efficient means of transporting wheat grain from the Midwest.
- ❑ The expanded rail facilities will accommodate 110 rail car trains and improve competitiveness.
- ❑ The proposed expansion will equip the facility with a new unloading pit, transfer elevator and grain storage capacity.
- ❑ This project strengthens the food manufacturing cluster in northwestern Virginia.
- ❑ Existing businesses account for approximately 70% of new jobs and capital investment in the Commonwealth according to the Virginia Economic Development Partnership.

October 17, 2013

# Requested Project Funding

<b>Applicant</b>	<b>Fiscal Year of Allocation</b>	<b>Recommended for CTB Allocation</b>	<b>Local Match (Minimum)</b>
<b>Miller Milling Company</b>	<b>2013</b>	<b>\$450,000</b>	<b>\$150,000</b>

A grantee match is required for amounts above \$300,000. A dollar for dollar match is required up to the limit of an additional \$150,000. The Applicant will invest \$4.25 Million of their own funds in the rail project. Total capital investments in the facility expansion are estimated at \$15.4 Million.



[www.drpt.virginia.gov](http://www.drpt.virginia.gov)

drptpr@drpt.virginia.gov

804-786-4440