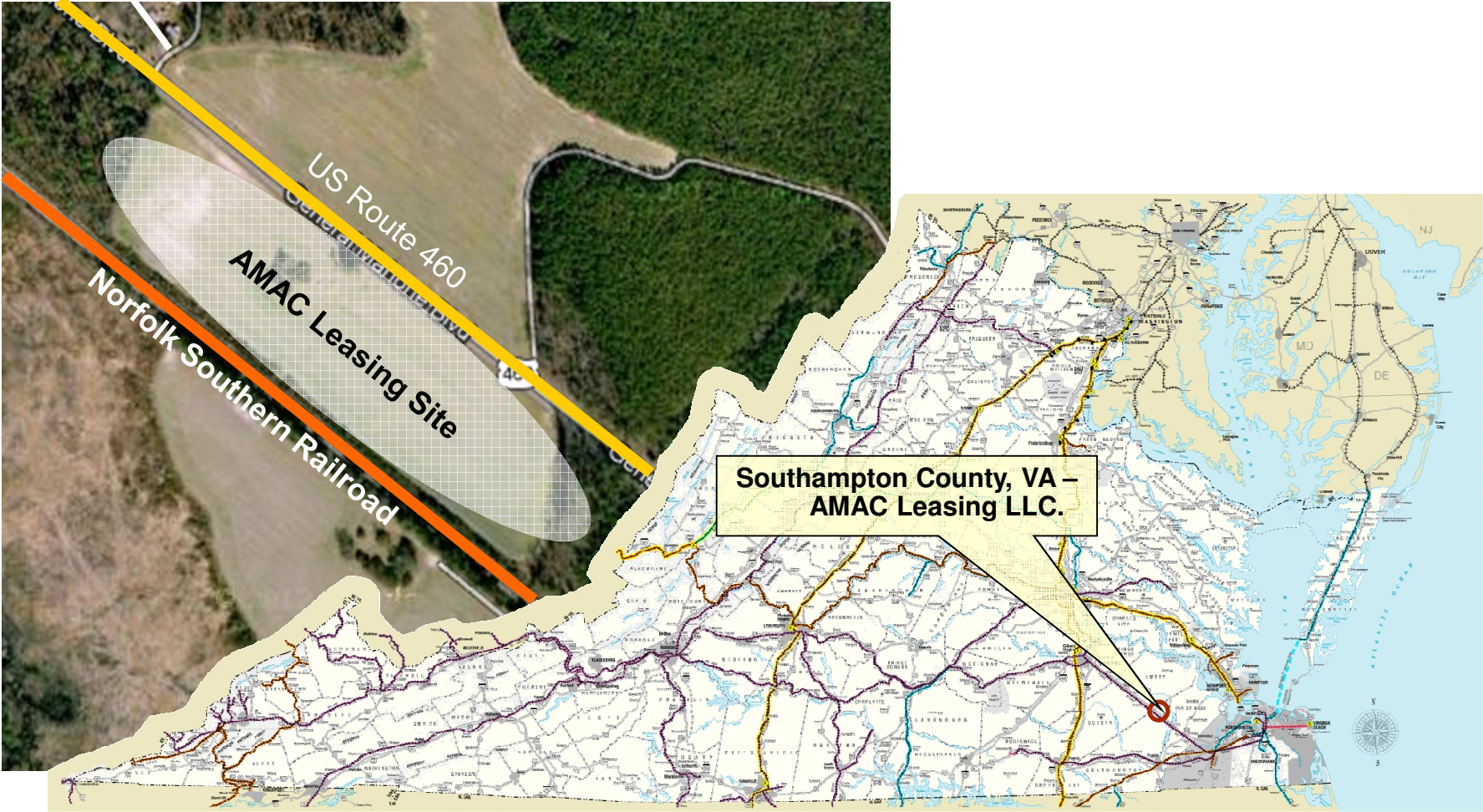


Rail Industrial Access Program Application Briefing

**AMAC Leasing, LLC
Southampton County, VA**

**Thelma Drake
Director**

Proposed Site



March 19-20, 2013

Project Summary

- ❑ Application for \$308,000 towards construction of approximately 2,088 feet of track.

- ❑ Application details:
 - 566 railcars annually
 - \$5,600,000 total estimated project investment
 - \$650,000 estimated cost of rail construction
 - 26 new jobs associated with this new facility

- ❑ Application scores 70 of 100 points. Scores greater than 50 are referred to the CTB for consideration.

Applicant Profile

- ❑ Rail access was important to selecting this location in Southampton County: economical transport of materials from quarries via railcar.
- ❑ The proposed facility would include the manufacture and sale of asphalt paving materials, concrete ready mix, cement treated aggregates and the distribution of commercial aggregates.
- ❑ \$142,000 was awarded to Greenwood RRST in July 2012, which leaves a maximum of \$308,000 available in Rail Industrial Access funds available for Southampton County in FY13.
- ❑ The expansion of AMAC Leasing, LLC to this area of Virginia will serve infrastructure development markets for roads, bridges, and buildings.

Requested Project Funding

Applicant	Fiscal Year of Allocation	Recommended for CTB Allocation	Local Match (Minimum)
AMAC Leasing, LLC	2013	\$308,000	\$8,000

A grantee match is required for amounts above \$300,000. A dollar for dollar match is required up to the limit of an additional \$150,000. The Applicant will invest \$342,000 of their own funds in the rail project. Total capital investments in the facility expansion are estimated at \$5.6 Million.



www.drpt.virginia.gov

drptpr@drpt.virginia.gov

804-786-4440