

Roanoke Valley Area

METROPOLITAN PLANNING ORGANIZATION

RVAMPO Update to the
Commonwealth Transportation Board

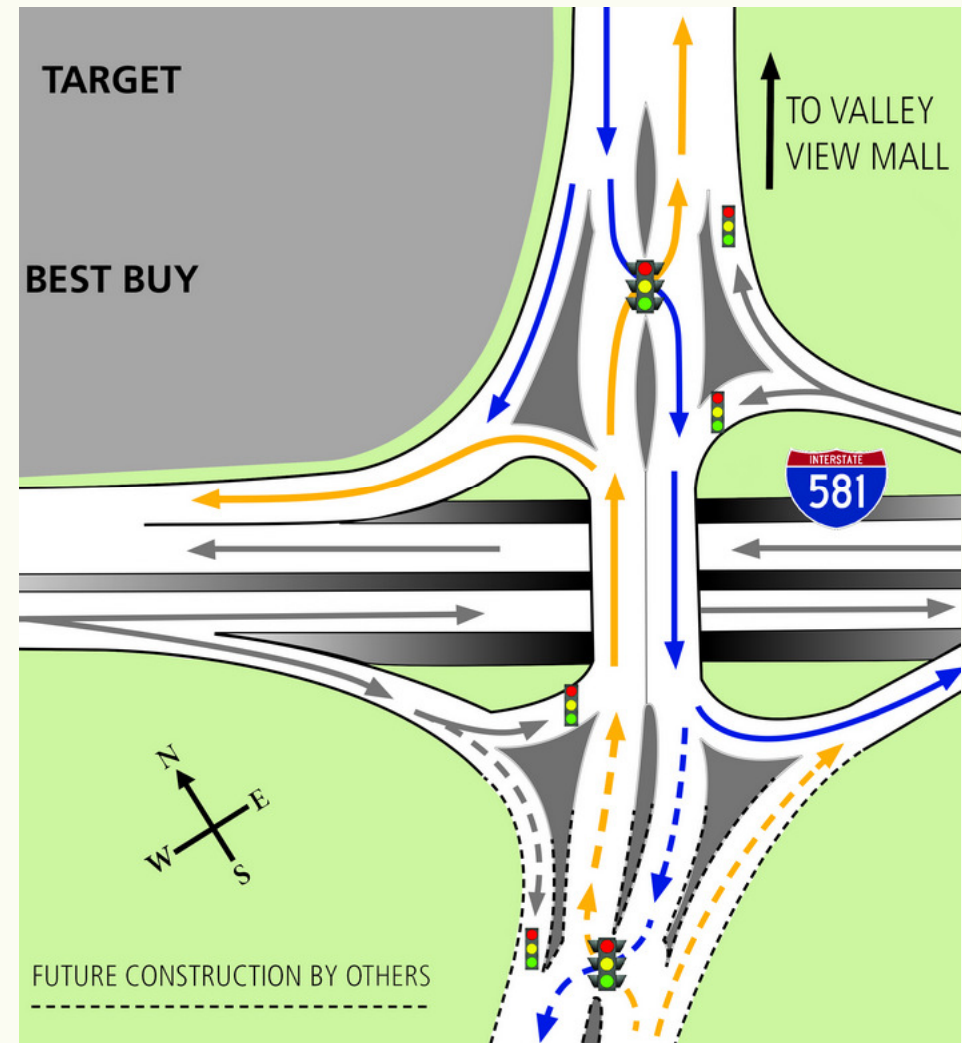
April 17, 2013

Overview

- Current Projects within MPO Study Area
- Transition to a TMA
- Expanding Passenger Rail to Roanoke
- Intermodal Facility in Elliston
- Roanoke Valley Greenway System

Current Projects within MPO

- I-581/Elm Avenue
 - Vehicle, pedestrian, bicycle, and ADA improvements
- I-581/Valley View
 - Diverging diamond design
 - Creates economic development opportunities



Current Projects within MPO

- I-81 Exit 150 Interchange
 - Botetourt County and RVAMPO to conduct an Area Plan
- U.S. 460 West of Salem
 - I-81 incident overflow
 - Economic development potential

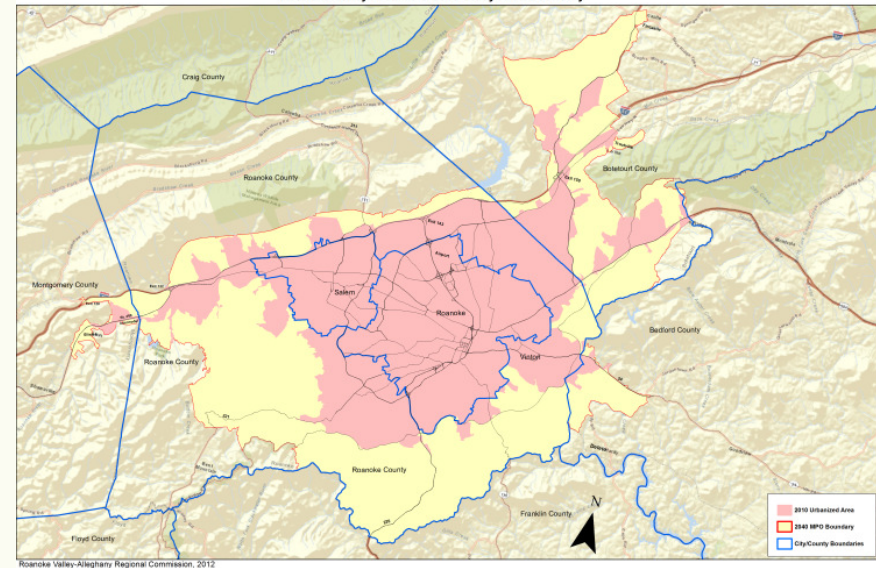


Transition to a TMA

- Congestion Management Process (CMP) Plan
- RSTP and TA Funding Allocation
- New voting members on the Policy Board
 - DRPT
 - Montgomery County



Roanoke Valley Area MPO 2040 Study Area Boundary



Expanding Passenger Rail to Roanoke

Planning for AMTRAK: station, parking, bus connections

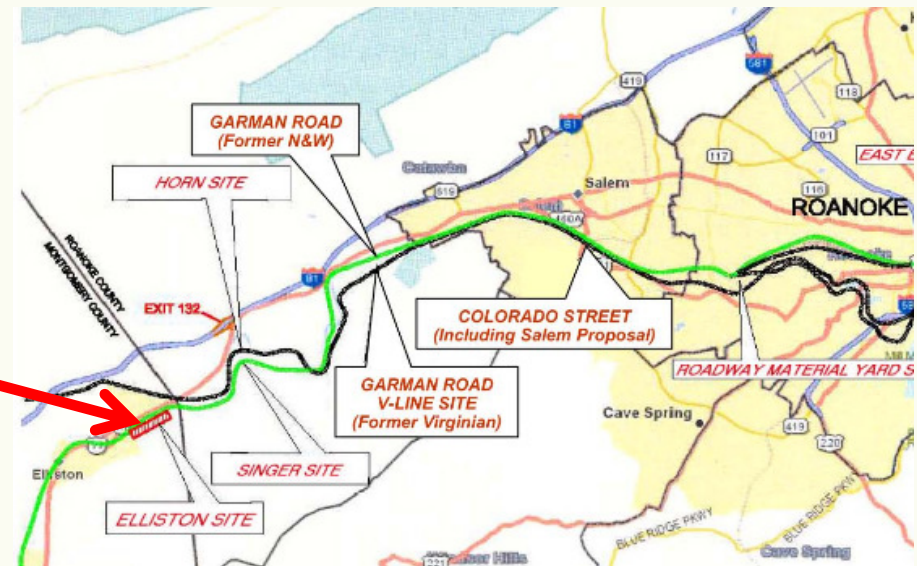


WWW.RVARC.ORG

Staffed by the
REGIONALcommission

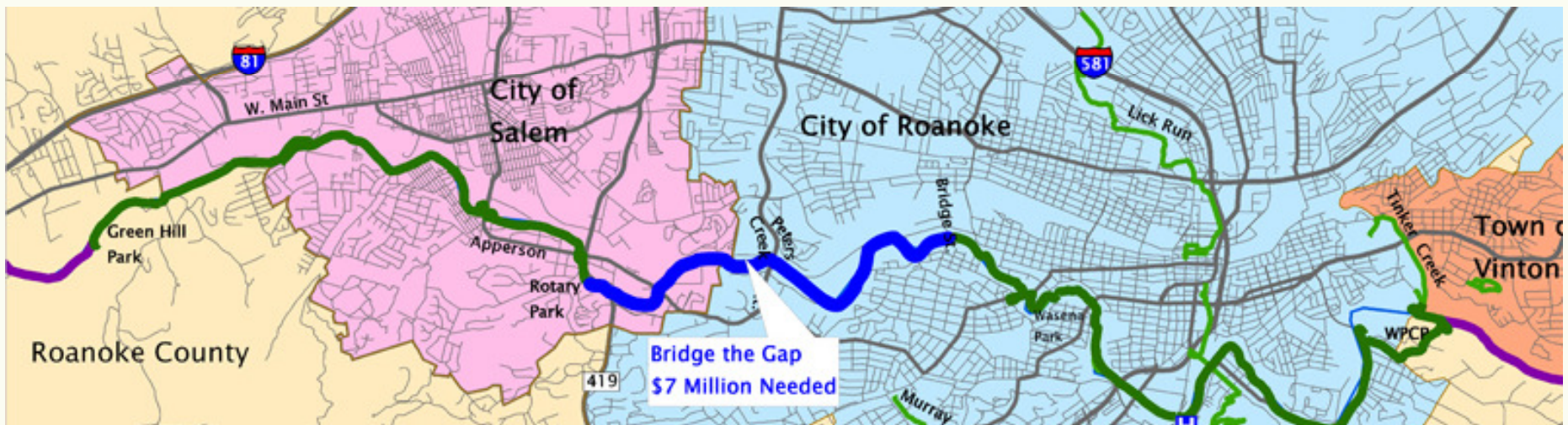
Intermodal Facility in Elliston

- Adjacent to RVAMPO Urbanized Boundary
- Included in CLRTTP 2040 Study Area Boundary



Roanoke Valley Greenway System

- Over 25 miles of greenways
- #1 Priority: Finish the Roanoke River Greenway
- 4-mile “Bridge the Gap” campaign



QUESTIONS?



Wayne G. Strickland
Secretary to the RVAMPO
wstrickland@rvarc.org
Ph 540.343.4417

WWW.RVARC.ORG

Staffed by the
REGIONALcommission