

Harrisonburg—Rockingham

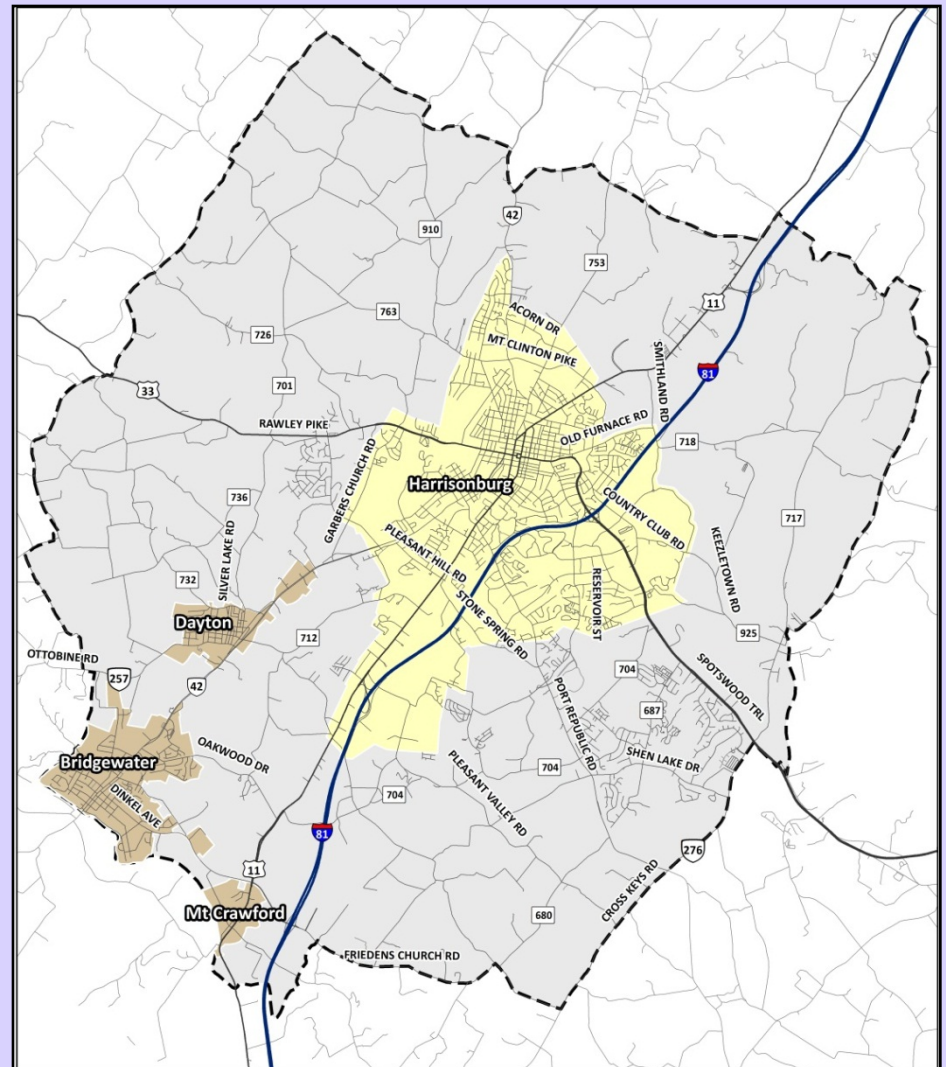
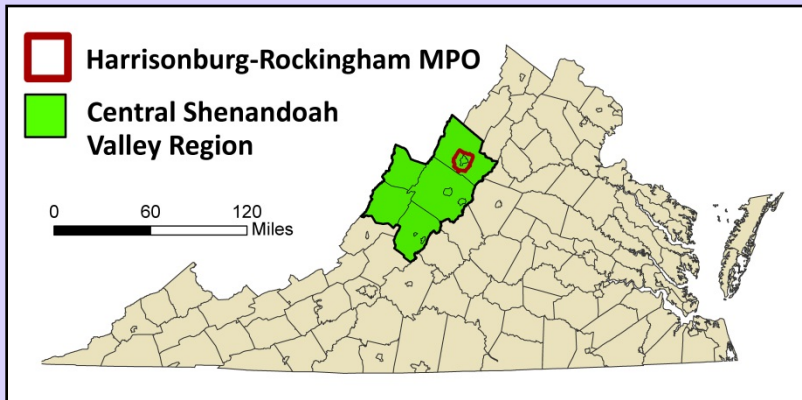
www.hrvampo.org

HRMPO

Metropolitan Planning Organization

Established in May of 2003 to implement continuing, cooperative and comprehensive transportation planning and programming.

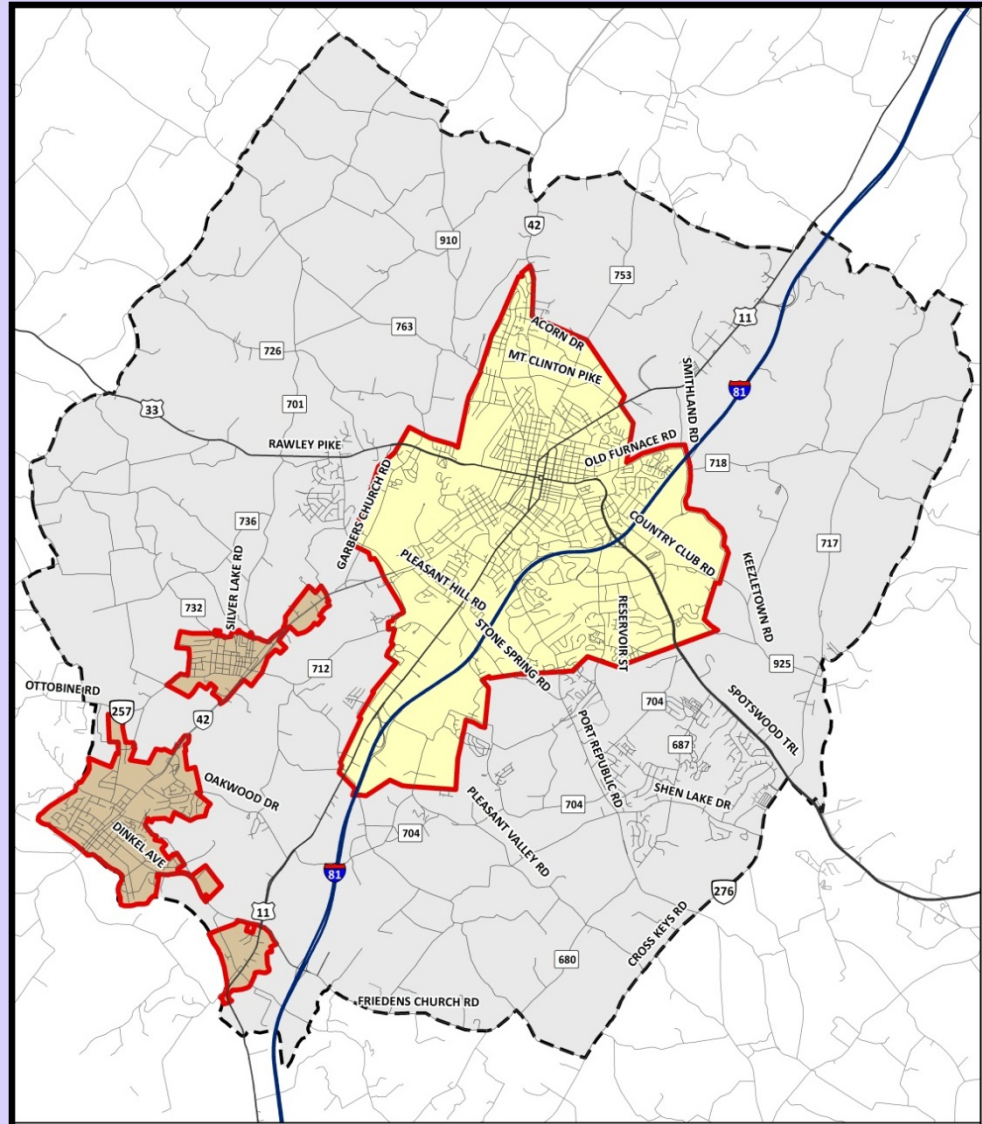
HRMPO Area



HRMPO Area

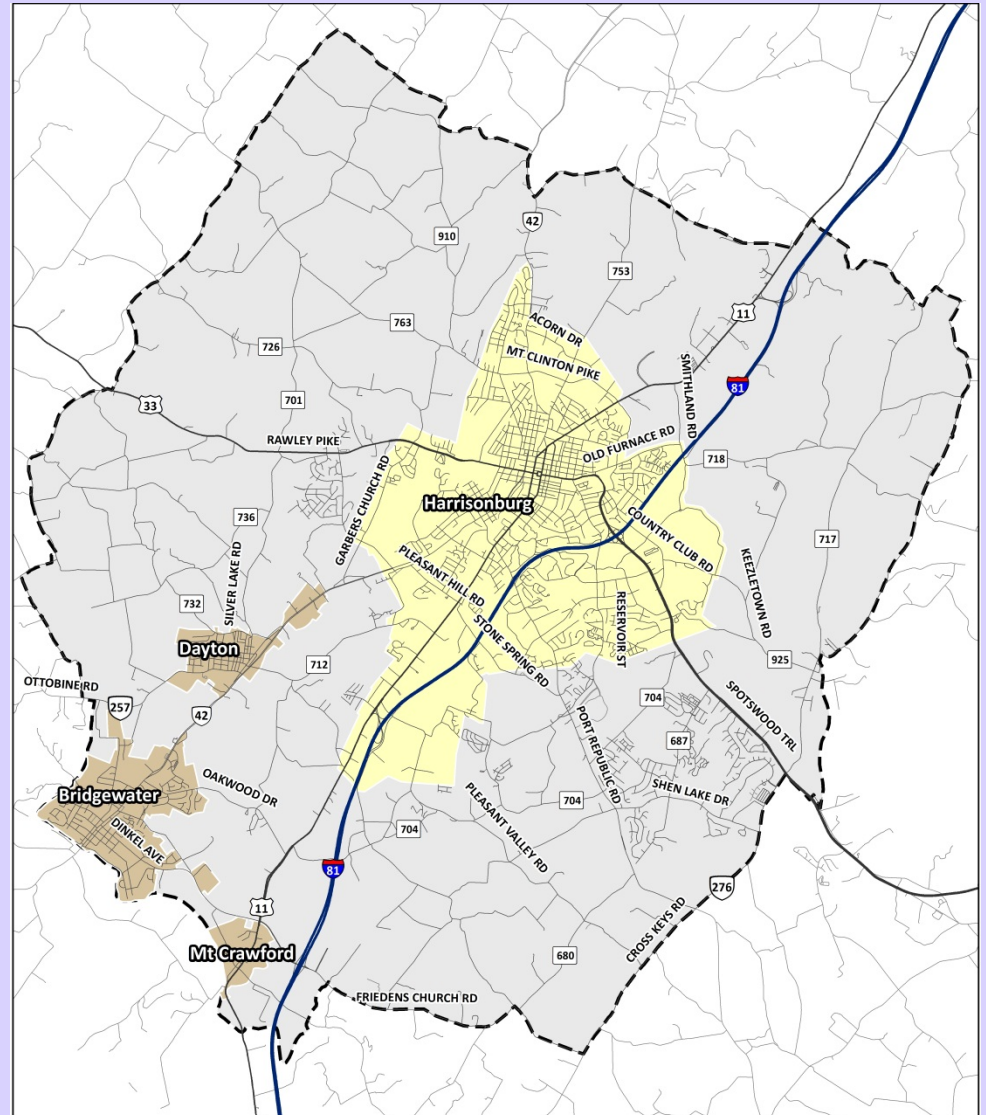
- **Localities:**

- City of Harrisonburg
- County of Rockingham
- Town of Bridgewater
- Town of Dayton
- Town of Mt. Crawford



HRMPO Area

- **Population:** 74,305
 - Led by the City of Harrisonburg which increased 8,461 between 2000 and 2010.
 - Since 2000, third highest growth rate (13.6%) of all Virginia metro areas behind NOVA and Winchester.
 - Growth both natural and in migration.
 - Forecasted to grow to 122,439 by 2035
- **Land Area:** 106mi²
 - Second smallest MPO in Virginia



Economic Climate

- #1 county in Virginia for agricultural sales (18.4% of state total)
- One of four metro areas with job growth (Danville, NOVA, Lynchburg)
- Healthcare (Rockingham Memorial Hospital)
- Bio-Sciences (SRI and Merck)
- Technology (Blue Ridge Data Center, Rosetta Stone)
- Rockingham County School Board
- JMU



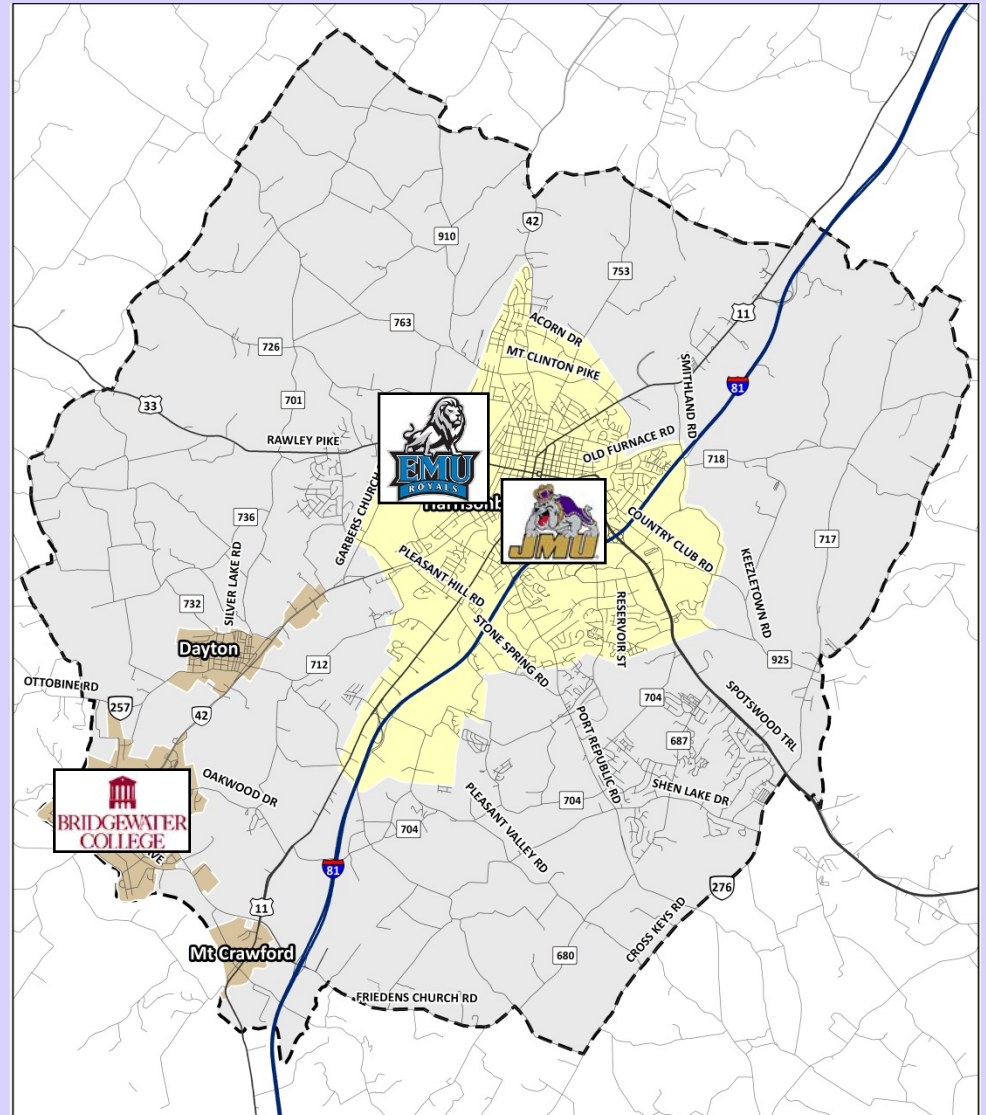
Education

- Higher Education

- James Madison University
- Bridgewater College
- Eastern Mennonite University

University Enrollment, 2002 - 2011

	James Madison University	Bridgewater College	Eastern Mennonite University
2002	15,965	1,363	1,352
2003	16,203	1,403	1,245
2004	16,108	1,532	1,297
2005	16,938	1,506	1,301
2006	17,393	1,514	1,324
2007	17,918	1,541	1,234
2008	18,454	1,514	1,387
2009	18,971	1,590	1,525
2010	19,434	1,688	1,537
2011	19,722	1,648	1,521

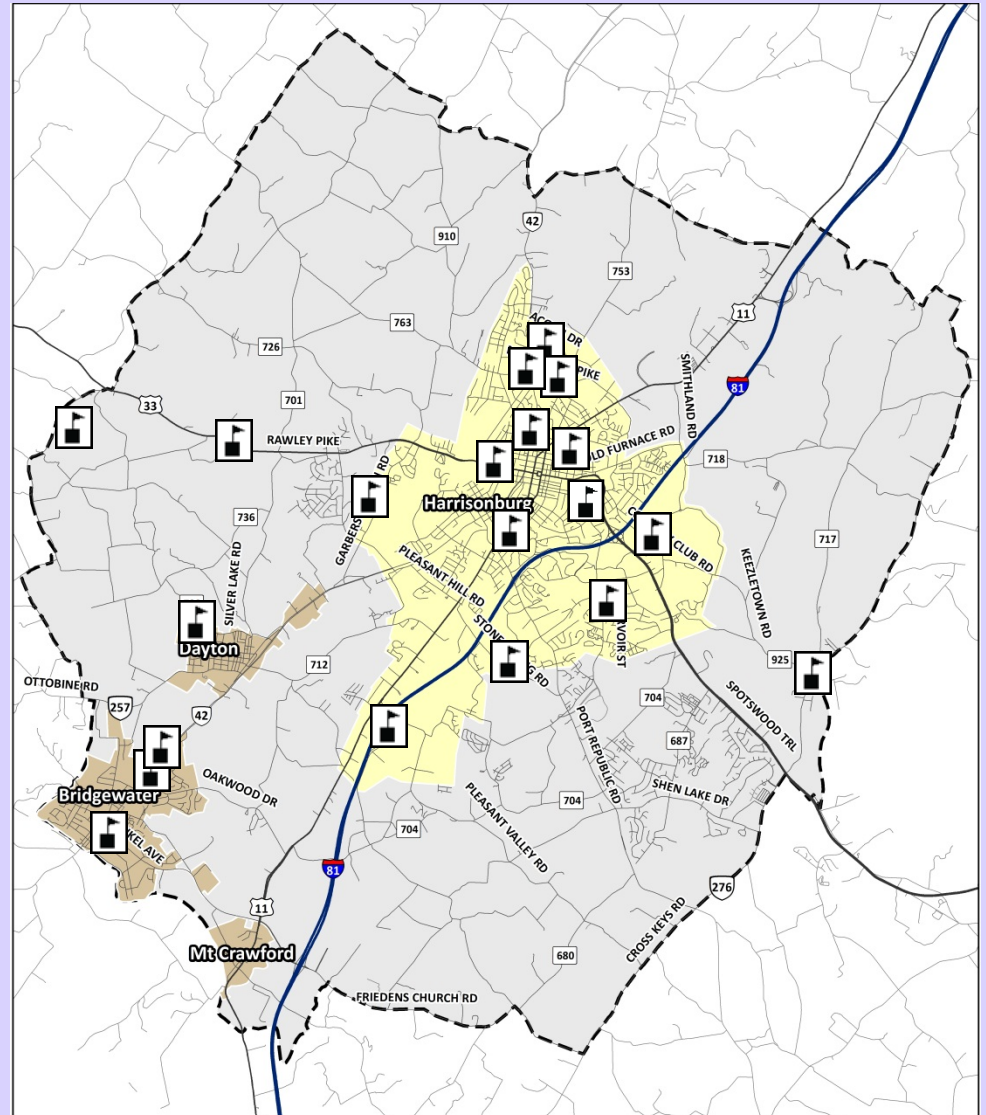


Education

- **School System**
 - 12 Elementary Schools
 - 4 Middle Schools
 - 4 High Schools
 - Massanutten Technical Center
 - Student enrollment – 8,493
 - 1,850 full-time employees



Eastern Mennonite High School



Transportation Network

- **Roadways:**
 - Interstate I-81 - 33 mi
 - US Highway: 34 mi.
 - Virginia Primary: 39 mi.
 - Secondary Urban: 443 mi.
- **Historic and Scenic Routes:**
 - Route 11, Valley Pike
 - Route 33
 - Scenic Byways
- **Public Transportation:**
 - Harrisonburg Transit
 - Carried over 2 million passengers in 2011
 - Virginia Regional Transit
 - Blue Ridge Community College (BRCC) Shuttle



Transportation Network

- **Aviation:**

- Shenandoah Valley Regional Airport
- Bridgewater Air Park

- **Rail:**

- Freight
 - Norfolk Southern
 - Chesapeake Western
 - Shenandoah Valley Railroads

- **Alternative Transportation:**

- Sidewalk Network
- Dayton/Bridgewater Buggy Path
- Bike Lanes and Shared-use Trails



Bicycle, Pedestrian and Transit Planning

- **City of Harrisonburg Bike-Ped Plan**
 - Adopted in 2010
- **City of Harrisonburg Transit**
 - Transit Administrative Feasibility Study
- **MPO-wide Bike-Ped Plan**
 - Currently underway



Bicycle/Pedestrian Safety and Education

- www.bikethevalley.org
 - Bicycle web resource for cyclists and tourism
 - Includes Maps and turn by turn directions for bike routes in the region
- Bike Like Ike campaign
 - Safety campaign geared for college-age kids
 - Includes campus brochures and bus advertisements



Bicycle/Pedestrian Safety and Education

- Rules of the Road Bicycle Safety
- Booklets distributed to:
 - High school students
 - Bicycle Safety Clinics
 - Boy Scout Troops
- Walk Smart, Bike Smart Campaign
- Helmet Give-a-ways
 - Police Departments
 - Safe Kids Central Shenandoah Valley Schools



Sharing the Road in VIRGINIA

Laws & Safety Tips for
Bicyclists & Pedestrians
plus, What Motorists Need to Know



www.SharingtheRoadinVirginia.org

MPO Studies

- **Current Studies**

- 2035 Long Range Transportation Plan - Finalized in March 2012
- Route 11 South Corridor Study - Completed in April 2012, awaiting adoption
- MPO-wide Bike-Ped Study – Currently underway

- **Previous Studies**

- Human Services Transit Coordination Study
- Harrisonburg Freight Mobility Evaluation
- Route 33 Access Management Study



Public workshop in January

Transportation Grant Programs

- **Transportation Enhancement Grants**

- Dayton Beautification Project
- Harrisonburg Streetscape Project
- Bridgewater Sidewalk Improvement Project



- **Safe Routes to Schools Grants**

- Mountain View Elementary
- Waterman Elementary
- Keister Elementary



Commuter Services



- Free commuter matching services
- Employer Services
 - Employee carpool matching
 - Vanpool start-up
- Guaranteed Ride Home Program
- Park and Ride Lot Inventory
- Call 1-888-974-5500 or www.rideshareinfo.org

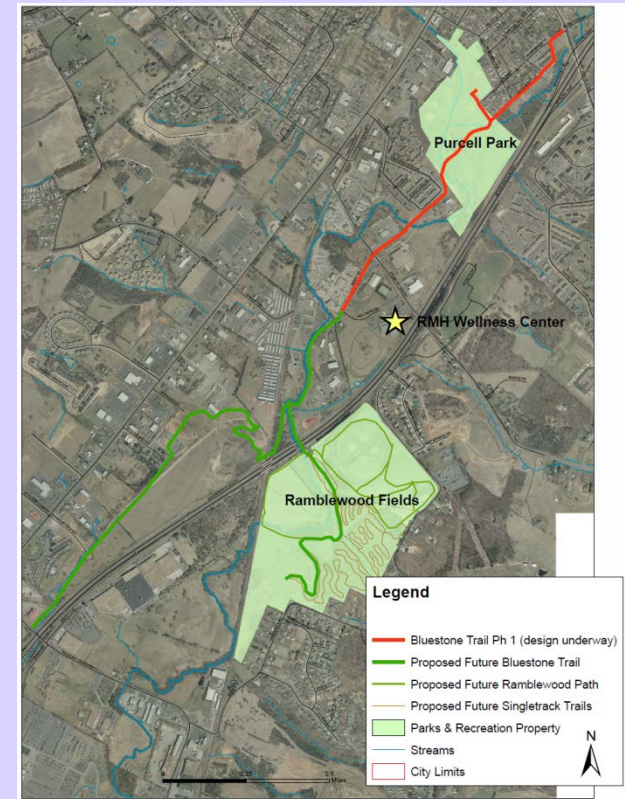


"It's great to share!"

Multi-use Trails

Blue Stone Trail

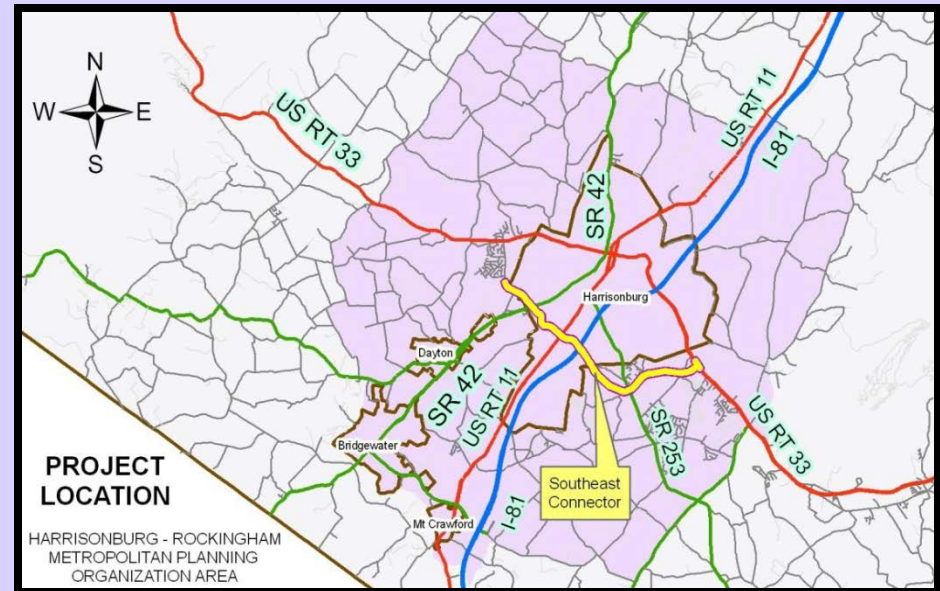
- A proposed 10-ft wide, off street, obstacle free route for transportation and recreation.
- Ideal for walkers, runners, bike riders, and children. Suitable for bicycle trailers and strollers.
- Provides greater connectivity between neighborhoods, parks, and other destinations.
- Located adjacent to the RMH Wellness Center.



Roadway Construction

Erickson Avenue - Stone Spring Road / SE Connector

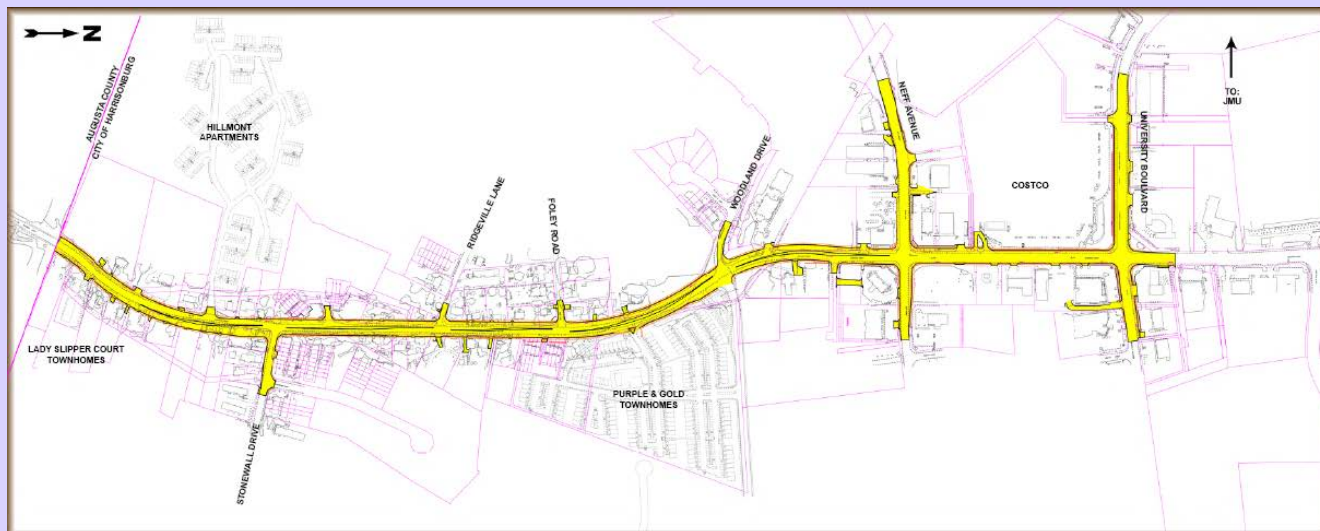
- Number one priority for Harrisonburg and Rockingham County
- Included in the City of Harrisonburg's 2004 Comprehensive Plan, HRMPO 2035 Transportation Plan, and current STIP and SYIP
- Four lane facility with curb and gutter and multimodal accommodations.
- Designed to improve east west mobility in Harrisonburg with substantial traffic capacity and safety improvements.
- Phase I completed in November 2010, Phase II under construction with an April 2013 estimated completion date. Phase III began in March 2012
- Facilitates access to Harrisonburg High School, Stone Spring Elementary School, Berea Christian School, City recreation facilities & the new Rockingham Memorial Hospital.



Roadway Construction

Reservoir Street

- Important link connecting Rockingham County and the southern end of the City with JMU and downtown Harrisonburg.
- Improves access to new Rockingham Memorial hospital
- Upgrade to four or five lane roadway with a raised curb median and bicycle and pedestrian facilities.
- In August 2010 City Council approved the right of way plans for the project.
- Improves capacity and mobility in a rapidly developing corridor.



Harrisonburg—Rockingham

www.hrvampo.org

HRMPO

Metropolitan Planning Organization

Central Shenandoah Planning District Commission

112 MacTanly Place ▪ Staunton, VA 24401 ▪ 540-885-5174