

National Museum of US Army (NMUSA)

Briefing to Virginia Commonwealth Transportation Board

Request for Limited Access Control Change (LACC) and
Access Management Exception for Intersection Spacing

Sheila Bergeron, P.E., PMP

Project Manager, New England District

Randy Rivinus, P.E.

Project Manager, Draper Aden Assoc.



US Army Corps of Engineers
BUILDING STRONG®



Agenda

- ▶ NMUSA Project Overview
 - Scope of Project
 - Project Status/Milestones
- ▶ NMUSA Strategic Vision
- ▶ Renderings and Plans
- ▶ Proposed Changes to VDOT Infrastructure
- ▶ Project Construction Schedule
- ▶ Questions

NMUSA Brief to Virginia CTB – LACC and Spacing Exception



NMUSA Project Overview

► Scope of Project

- Approximately 180,000 SF new multiple story museum building and campus including parade field, amphitheater, memorial garden, trail network, and parking
- To be located on 85 acre portion of Fort Belvoir – presently occupied by 5 holes of the Fort Belvoir Golf Course
- Projected visitation of 740,000 per year
- Construction funded by donated funds raised by Army Historical Foundation and FY12 MCA for infrastructure (roads, utilities, clearing and grading)
- Estimated Construction Cost for Phase I is ~ \$150 M.
- Future expansion in the long range planning for the NMUSA. Scope would include ~ 80,000 SF addition plus an outdoor education center and expansion of other site features

NMUSA Brief to Virginia CTB – LACC and Spacing Exception



NMUSA Project Overview

► Project Status/Milestones

- Design presently ongoing; 35% design completed in May 2011
- Design completed for the NMUSA exhibits – June 2011
- NCPC Preliminary Design Submission in April 2011; Commission Meeting held 7 July 2011
- Environmental Assessment/Finding of No Significant Impact (FMSI) signed 19 May 2011
- Formal designation by Secretary of the Army of the Golf Course site as the Site for the NMUSA – 16 Jun 2011
- Design completion for Intersection expected by end of 2011/early 2012.

NMUSA Brief to Virginia CTB – LACC and Spacing Exception



NMUSA Strategic Vision


- ▶ Honor the Service and Sacrifice of the Soldiers and their Families
- ▶ Preserve the Legacy of the U.S. Army's history
- ▶ Portray History Comprehensively and Objectively
- ▶ Educate the visiting public to the role and relationship of the U.S. Army to the Nation
- ▶ Engage visitors of all ages, immersing them in Army history and the Soldier's life
- ▶ Inspire Soldiers and promote esprit de corps
- ▶ Be the Capstone of the Army Museum System


NMUSA Brief to Virginia CTB – LACC and Spacing Exception



NMUSA Renderings

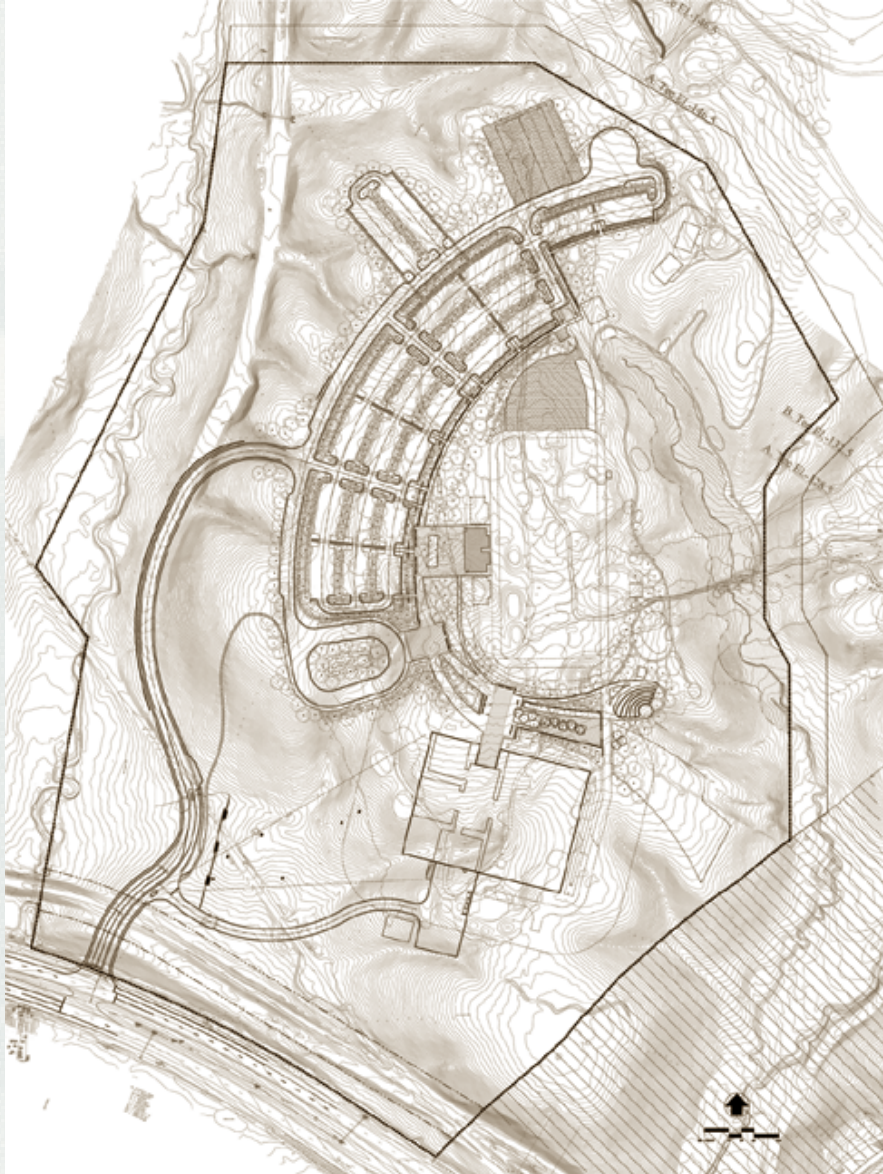


View of Building from Access Road 

 Rendered Site Plan



NMUSA Site Plan



Site Features:

- Museum Building
- Parade Field
- Grandstand
- Staging area
- Pedestrian promenade
- Memorial garden
- Amphitheater
- Army Trail
- Entry Plaza

Support Items:

- Access Road
- Parking
- Drop-off loop
- Service road
- Fire lane



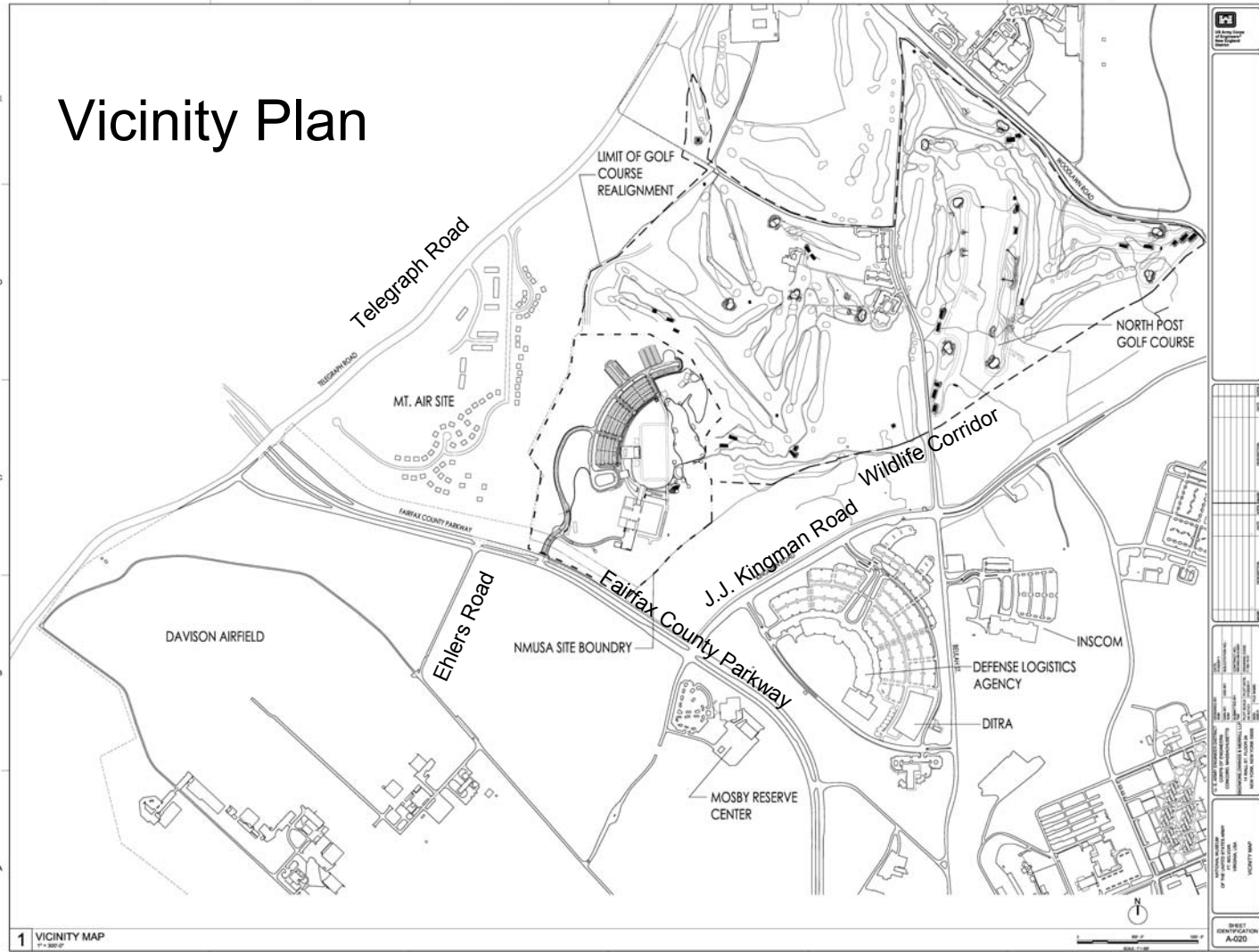
Location of Site

Need to include a general location plan showing site with relation to Rte 95 and Rte 1



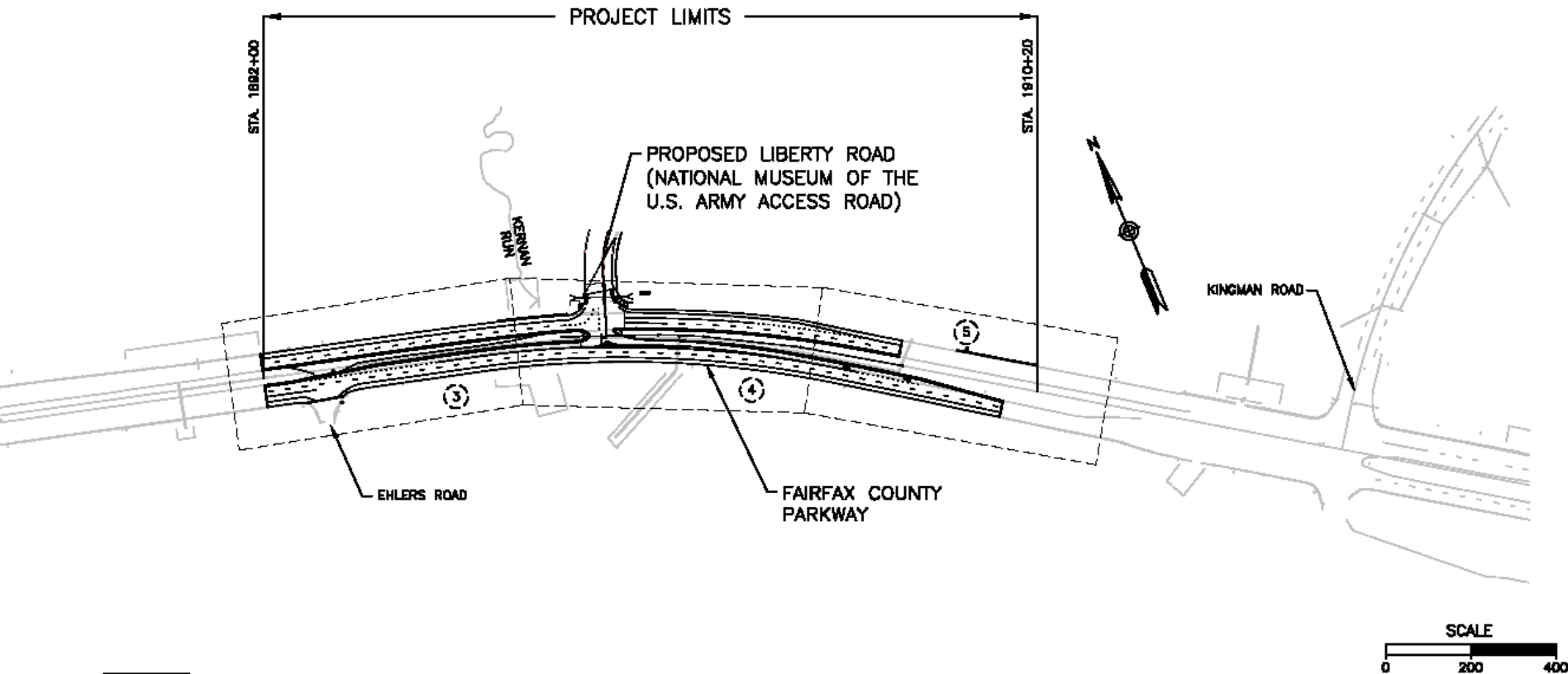
NMUSA Vicinity Plan

Vicinity Plan



Changes to VDOT Infrastructure

Project Limits

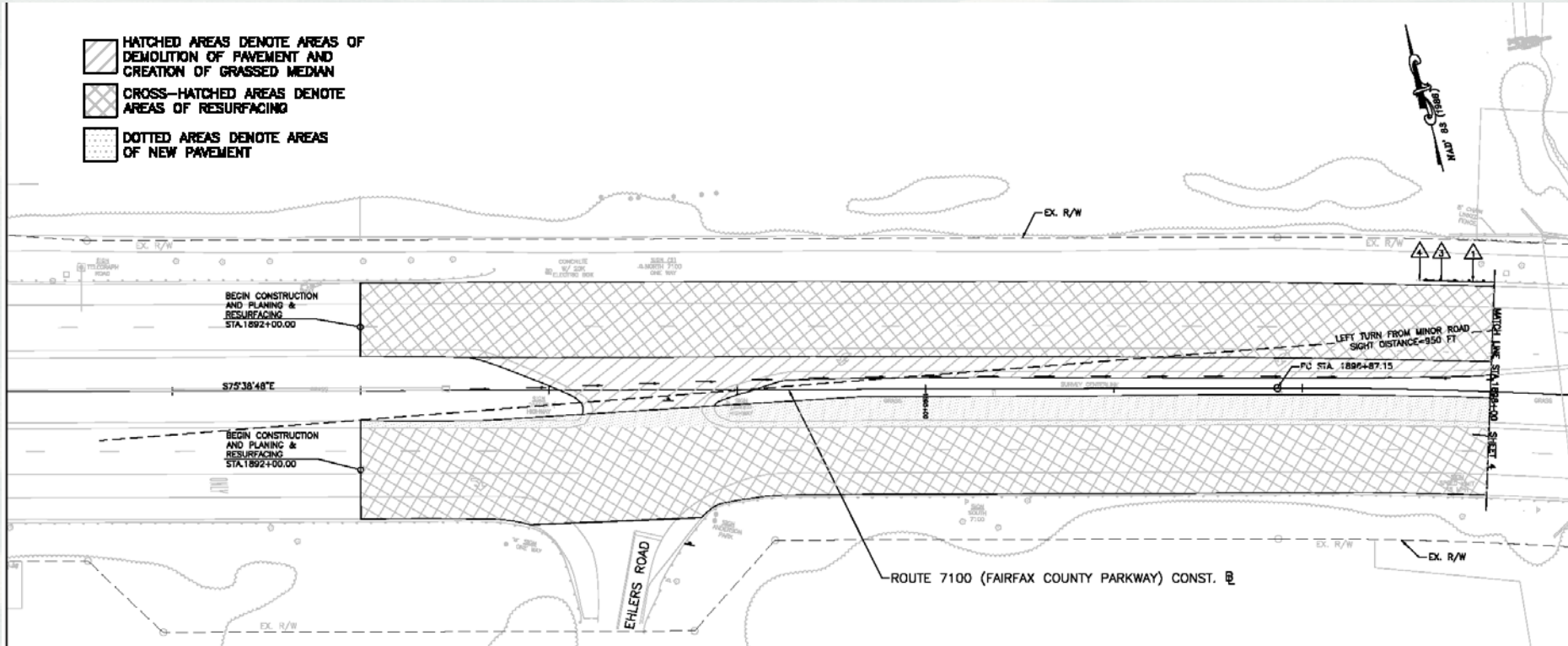


NMUSA Brief to Virginia CTB – LACC and Spacing Exception



Changes to VDOT Infrastructure

Details – Sheet 1 of 3

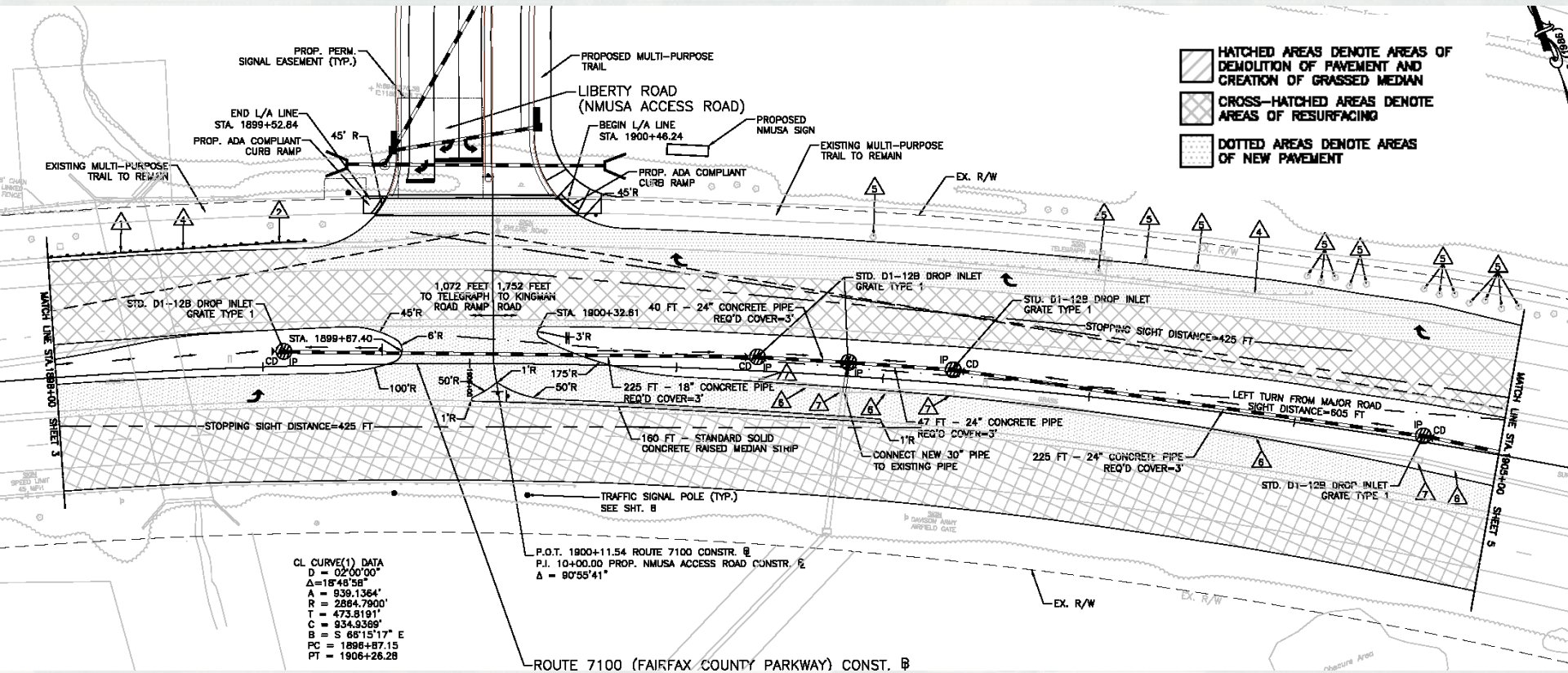


NMUSA Brief to Virginia CTB – LACC and Spacing Exception



Changes to VDOT Infrastructure

Details – Sheet 2 of 3

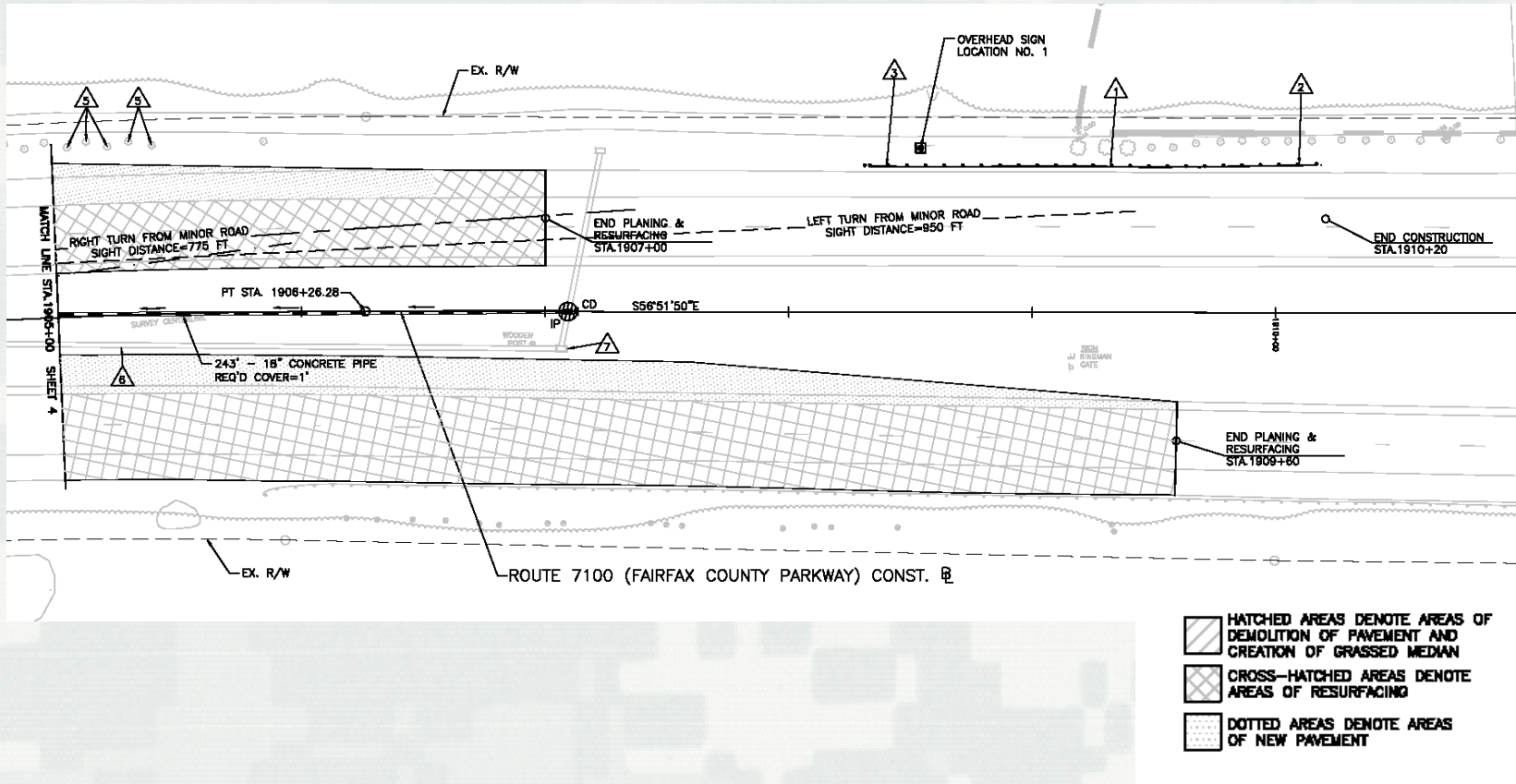


NMUSA Brief to Virginia CTB – LACC and Spacing Exception



Changes to VDOT Infrastructure

Details – Sheet 3 of 3

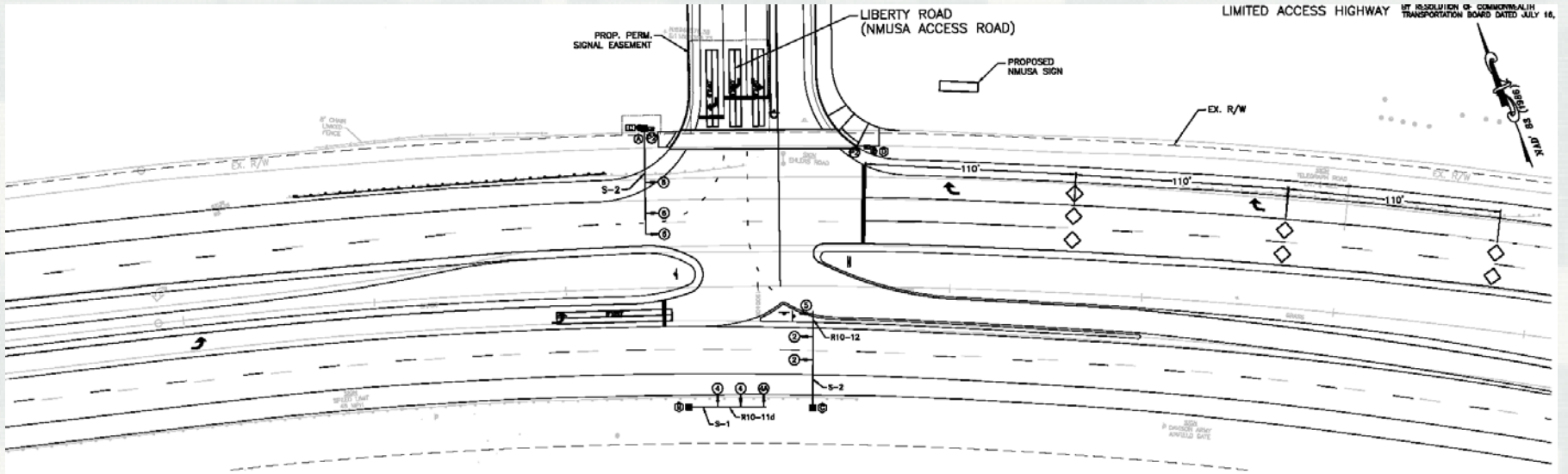


NMUSA Brief to Virginia CTB – LACC and Spacing Exception



Changes to VDOT Infrastructure

Signalization Plan



LIMITED ACCESS HIGHWAY BY RESOLUTION OF COMMONWEALTH TRANSPORTATION BOARD DATED JULY 16, 1988

PHASING DIAGRAM



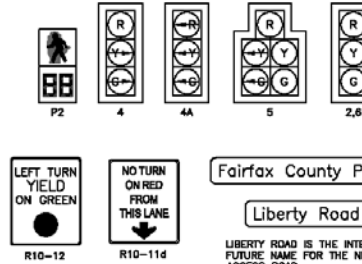
Note: The eastbound through movement shall remain green at all times, except during flash.

INITIAL TIMING CHART

APP #	MIN GRN	PHAS	YELLOW CHANGE	RED CLEAR	MAX 1	MAX 2	WALK	PEDEST	OPN	YTB	MIN GRN	RED REV	MODE	SWITCH
# 4	7.0	3	3.0	3.0	36.0						3.0			M
# 5	7.0	3	4.5	3.0	26.0						3.0			M
# 6	18.0	3	4.5	2.0	21.2	20.0	28.0				3.0			L

The speed limit on Fairfax County Parkway is posted at 45 mph.

SIGNS AND SIGNALS



TRAFFIC SIGNAL EQUIPMENT LEGEND

SYMBOL	DESCRIPTION
●	TRAFFIC SIGNAL PEDESTAL POLE AND FOUNDATION
■	MAST ARM TRAFFIC SIGNAL POST AND FOUNDATION
—	VEHICLE SIGNAL HEAD
—	PEDESTRIAN SIGNAL HEAD
◇	TRAFFIC DETECTORS LOOP
⊙	PEDESTRIAN DETECTOR - PUSH BUTTON WITH SIGN
⊠	CONTROLLER CABINET AND FOUNDATION

COLOR SEQUENCE CHART

PHASE	PHASES			L
	4	5	6	
2	G	G	G	Y
4	G	G		R
4A	G			R
5		G		R
6			G	Y
P1	OW	OW	W	Blank
P2	OW	OW	W	Blank

Blank lanes denote Red Indication.

SIGNAL POLE LEGEND:

ALL DIMENSIONS ARE FROM 0 OF POLE TO THE CENTER OF THE MEASURED OBJECT.

- ④ MAST ARM POLE
83' RT. STA. 1589+43 FCP R
50° ARM 80° ANGLE TO FCP R
SIGNAL PLACEMENTS: 28', 44', 30'
SIGN PLACEMENTS: 23'
23' MOUNTING HEIGHT
- ⑤ MAST ARM POLE
83' RT. STA. 1900+28 FCP R
50° ARM 27° ANGLE TO FCP R
SIGNAL PLACEMENTS: 28', 37', 46'
SIGN PLACEMENTS: 16'
23' MOUNTING HEIGHT
- ⑥ MAST ARM POLE
82' RT. STA. 1888+73 FCP R
40° ARM 180° ANGLE TO FCP R
SIGNAL PLACEMENTS: 10', 27', 29'
SIGN PLACEMENTS: 7', 21'
23' MOUNTING HEIGHT
- ⑦ PROP. 8' PEDESTAL POLE
73' LT. STA. 1900+50 FCP R

SIGNALIZATION PLAN

NMUSA Brief to Virginia CTB – LACC and Spacing Exception



Project Construction Schedule

- ▶ Construction work to be done in stages
 - Summer 2012: Start construction on access road to include median break
 - Fall 2012: Break ground on Golf Course site
 - Early 2013: Museum building construction starts
 - Fall 2014: Completion of initial Museum building component
 - Summer 2015: Museum Opening (not including exterior program elements)
 - 2017-2018: completion of all Phase 1 work



Questions?

Thank you very much for your time and consideration

NMUSA Brief to Virginia CTB – LACC and Spacing Exception

