

October 20, 2010

# Report to the Commonwealth Transportation Board



# Overview



- Began in 1975
- Regional public transportation system serving:
  - Charlottesville
  - Albemarle
  - Louisa
  - Nelson
  - Fluvanna
  - Buckingham
- Fleet of 65 vehicles over 2500 square miles



# Organization



- Owned by the local governments we serve
- Local governments appoint all Directors to Board
- Funded by federal, state and local governments
- Fares and human service agency payments provide revenue



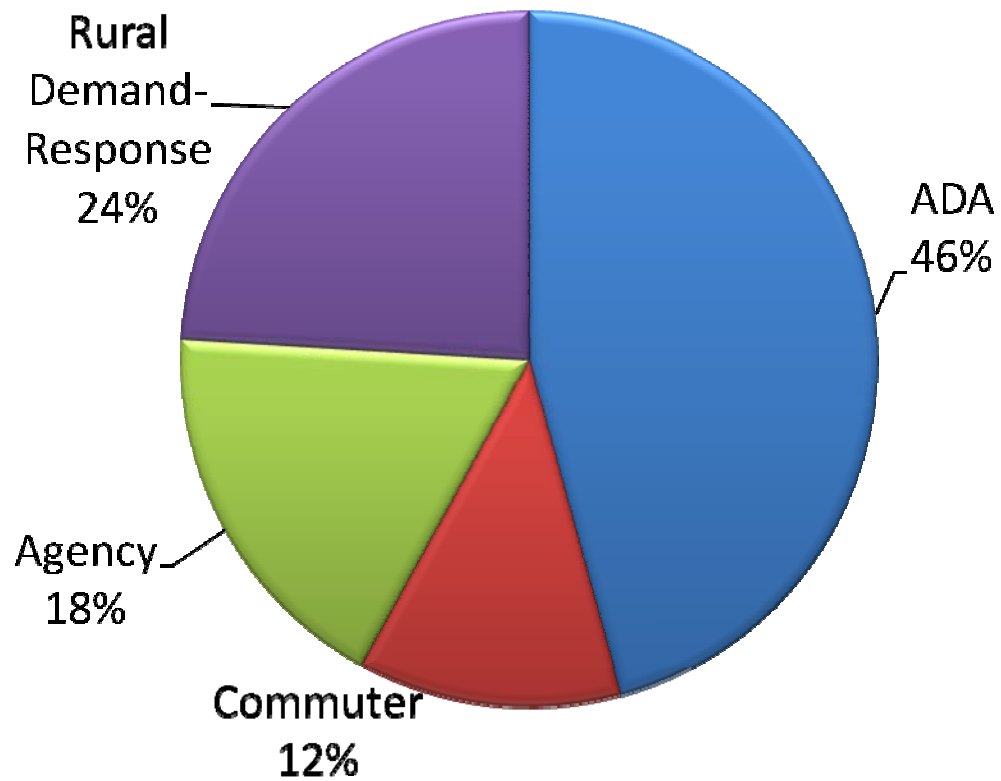
## Unique Mix of Services



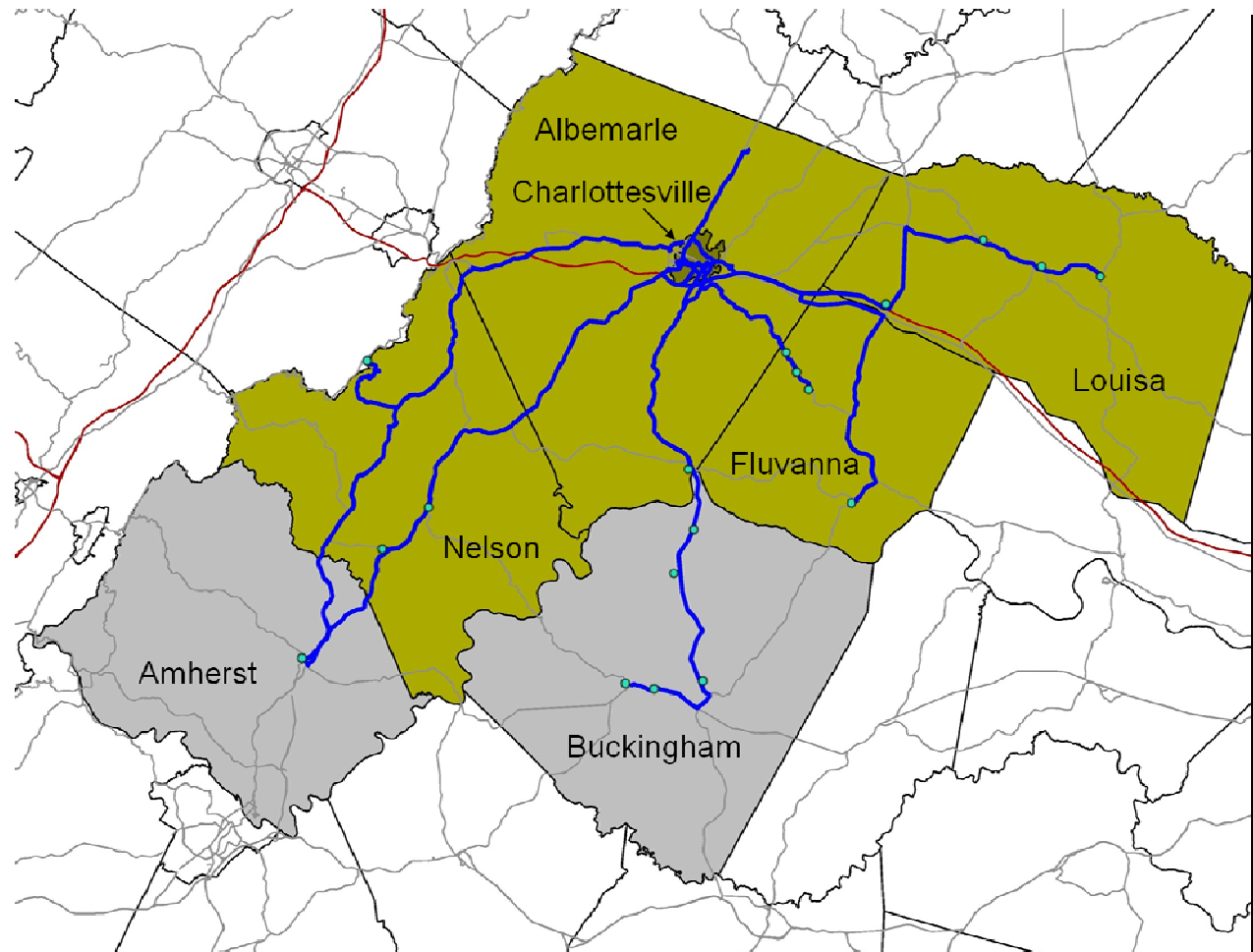
- ADA complementary paratransit to supplement Charlottesville's fixed route bus system
- Demand –response service in most counties
- Commuter routes to Charlottesville and to Wintergreen
- Coordinated human service agency transportation



## Service Mix – Trip Types



# Commuter Routes



## Complementary Paratransit



- Demand-response service for people with disabilities who can't ride the CAT bus
- Meets very strict ADA guidelines
- Over 135,000 trips in FY10 in Charlottesville and urban Albemarle



# Rural Demand-Response Transportation



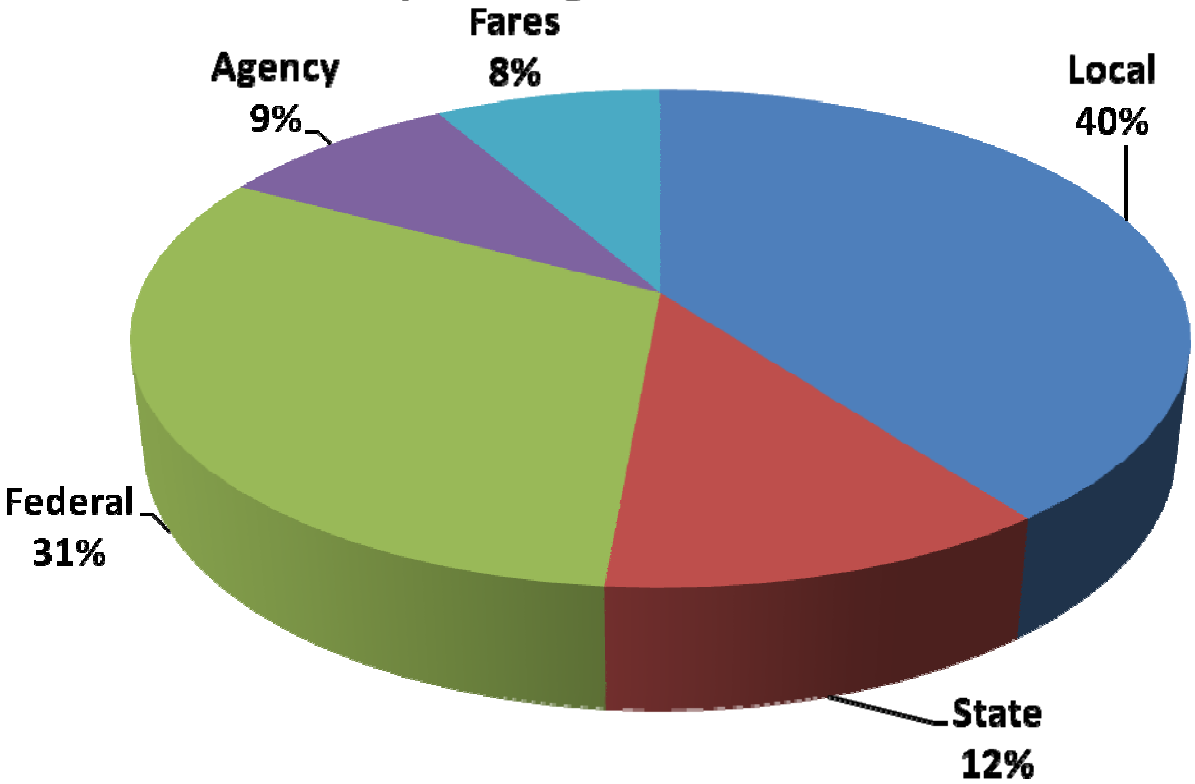
- Serves Albemarle, Fluvanna, Nelson and Louisa Counties
- Fares range from \$1.00 to \$8.00
- Provides intracounty service as well as trips to Charlottesville
- Primarily for medical trips, but many folks going to work, to get groceries and other critical needs





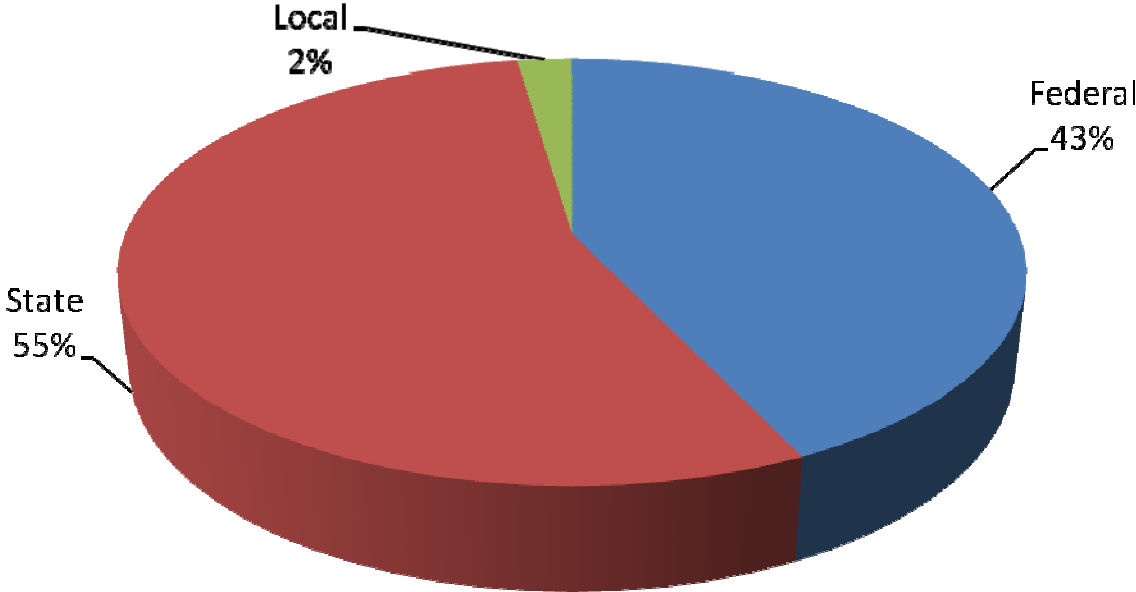
# Finances

**FY10 Operating Revenues = \$4.9 million**



# FY11 Capital Funding

Sixteen Replacement Vehicles = \$1,090,300



# Human Service Agency Transportation



- JAUNT got its start as a coordinated human service provider
- Serves a wide variety of agencies throughout service area, including:
  - Senior Centers
  - Medicaid trips
  - Sheltered Workshops
- Coordinating trips with public riders increases efficiency



## Highlights



- Public-private partnership with Wintergreen Resort funds routes for employees
- Expanded to Buckingham in 2006
- Despite tough budget times, local governments have funded increased services in FY10 and FY11



# Ridership



## Other Unique Features

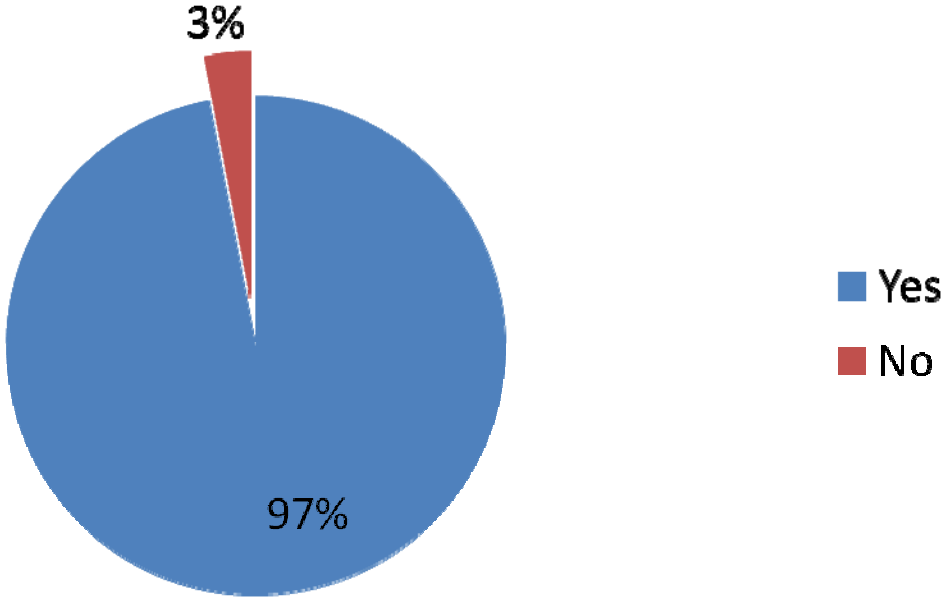


- Leader in using technology
- Service in each jurisdiction tailored to community priorities:
  - Seniors in Louisa
  - Children in Fluvanna
  - Commuters in Nelson
- Riders include professors commuting to UVA, low-income folks riding to dialysis, community sports teams



# Satisfied Customers

**Did you receive prompt, courteous service?**



## Satisfied Customers

***JAUNT is awesome!***  
from passenger survey

***The consumers love to ride the bus.***  
CSB Staff Member

***The service JAUNT  
represents is the best  
thing we've  
encountered since  
coming to Cville 12  
years ago.***  
from passenger survey





## Still to Come . . .



- Culpeper to Charlottesville service starts in November
- Security cameras are being installed in entire fleet
- Nonprofit JAUNT Friends celebrating 35 years with \$3500 fund-raising goal for ticket “scholarships”



Questions?

