

Bristol Metropolitan Planning Organization

April 14, 2010

Commonwealth Transportation Board

Rex Montgomery
Transportation Planning Manager
Bristol MPO



Bristol Metropolitan Planning Organization

- Bristol Tennessee-Virginia designated an Urbanized Area (>50,000 in population) by the 1980 Census.
- The Bristol MPO was established in 1982 and designated a multi-state MPO by the Governors of Tennessee and Virginia.
- Bristol Tennessee-Virginia 2000 Census urbanized area population.

<u>Urbanized Area</u>		<u>MPO Study Area</u>	
Virginia	19,972	Virginia	28,836
Tennessee	38,500	Tennessee	60,864
Total	58,472	Total	89,700

- 2010 Census may redefine the MPO boundary with expanded Urbanized Area in Washington County, Virginia.

Bristol Metropolitan Planning Organizations

MPO Member Jurisdictions



Virginia

- Bristol
- Washington County (part)



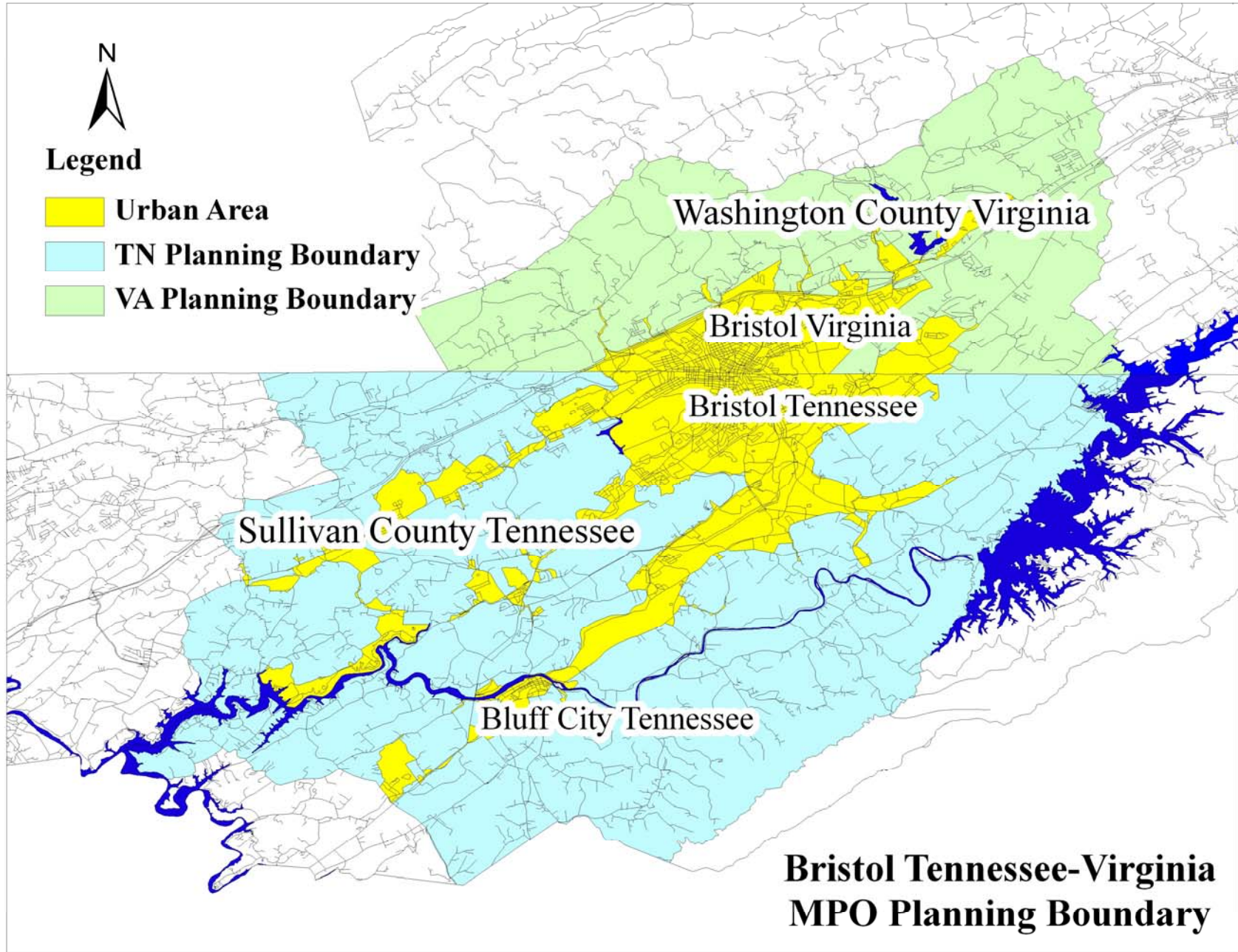
Tennessee

- Bristol
- Bluff City
- Sullivan County (part)



Legend

-  **Urban Area**
-  **TN Planning Boundary**
-  **VA Planning Boundary**





Bristol Metropolitan Planning Organization

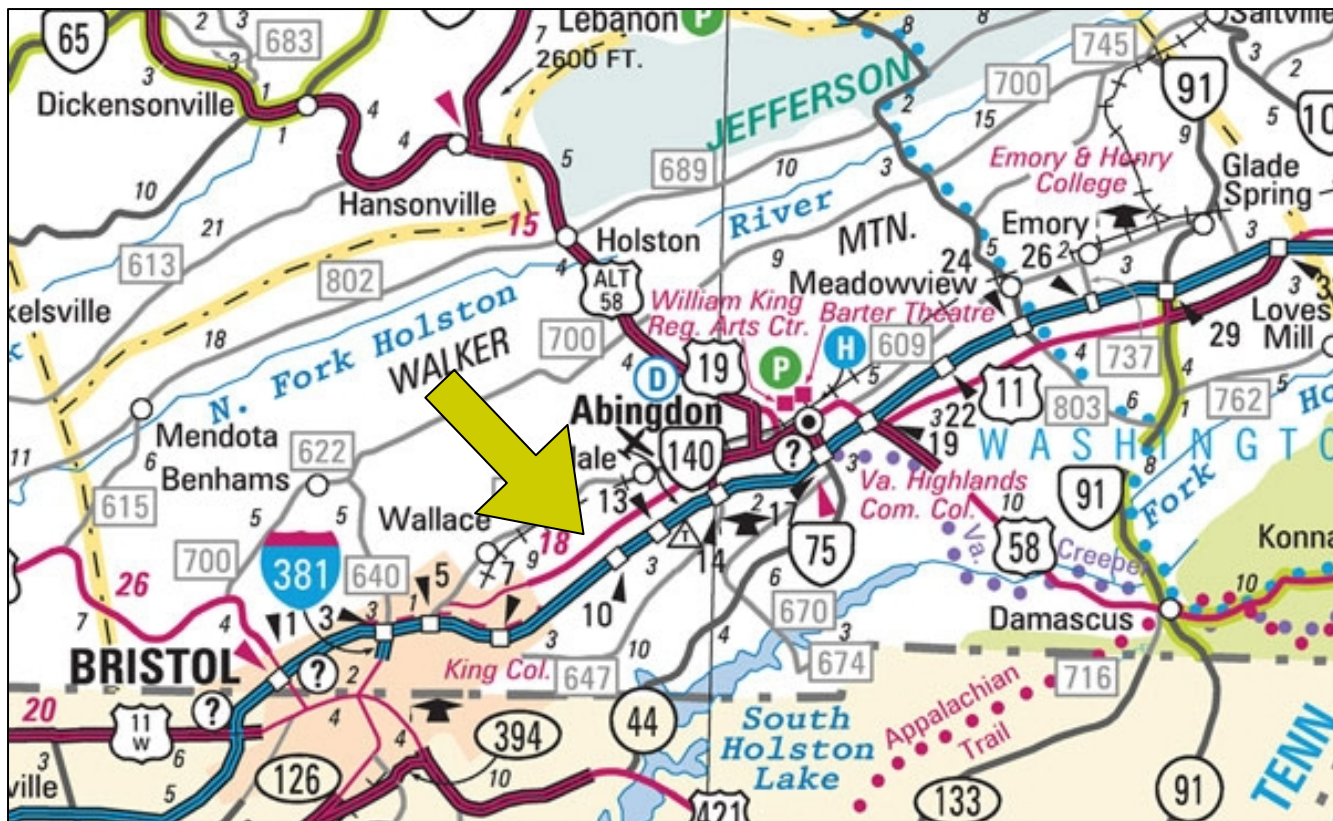
Federal Transportation Planning Requirements

- Public Involvement Process
- Unified Planning Work Program (UPWP)
- Transportation Improvement Program (TIP)
- Regional ITS Architecture (completed in 2009)
- Long-Range Transportation Plan (LRTP)
MPO is currently in the process of updating the LRTP

Bristol Metropolitan Planning Organization

Regional Priorities

Lee Highway (Route 11) Corridor between Bristol and Abingdon.

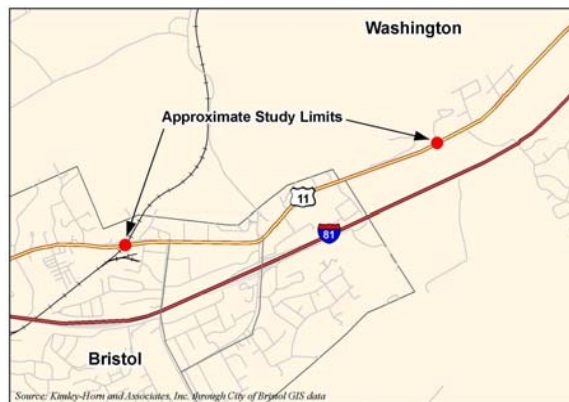


Bristol Metropolitan Planning Organization

Regional Priorities

Lee Highway (Route 11)
Bristol, Virginia

- On-going Corridor Study for a 2 mile section of Lee Highway in Bristol, Virginia near I-81 Exit 7.
- Corridor Study funded by the State Planning and Research (SPR) program.



- Study will provide potential short-term and long-term operation and capacity improvements for an area with significant retail and commercial growth.

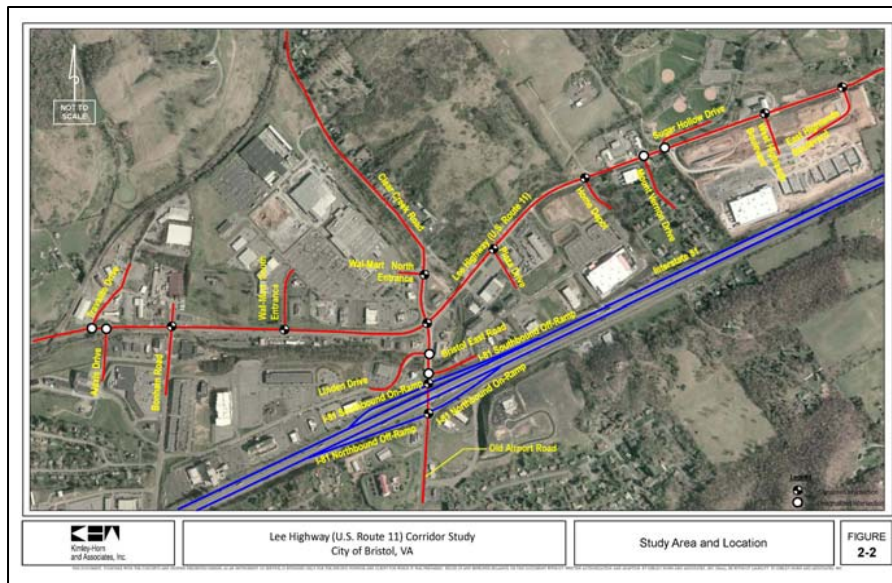
Bristol Metropolitan Planning Organization

Regional Priorities

I-81 Exit 7

Bristol, Virginia

- The Lee Highway Corridor Study will also provide data for a recommended Interchange Modification Report of I-81 and Old Airport Road (Exit 7).

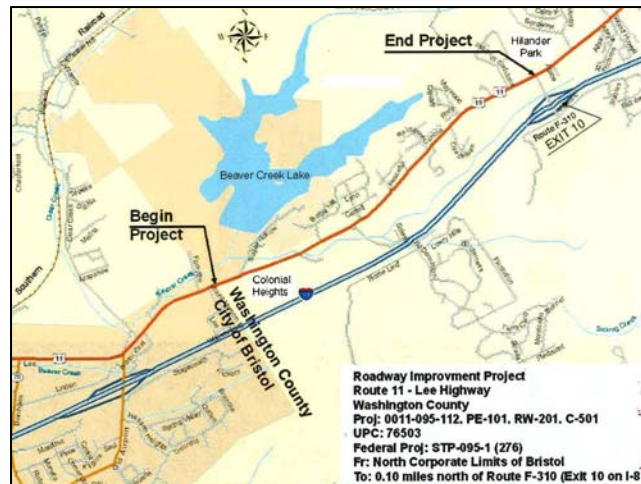


Bristol Metropolitan Planning Organization

Regional Priorities

Lee Highway (Route 11)
Washington County, Virginia

- Bristol City Limits to I-81 Exit 10 (Phase 1).
- Widen to 4 lane with median.



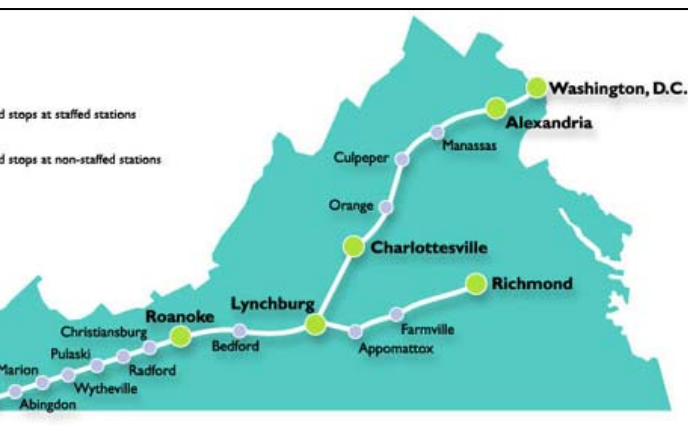
- Information meeting was held in 2007 on the preliminary design.
- Completion of the engineering phase has been put on hold due to funding constraints.

Bristol Metropolitan Planning Organization

Multimodal Priorities

Bristol District

- Norfolk Southern Crescent Corridor
- TransDominion Express
- Public Transportation





Thank you!

Bristol Metropolitan Planning Organization

Rex Montgomery
Transportation Planning Manager
Bristol MPO