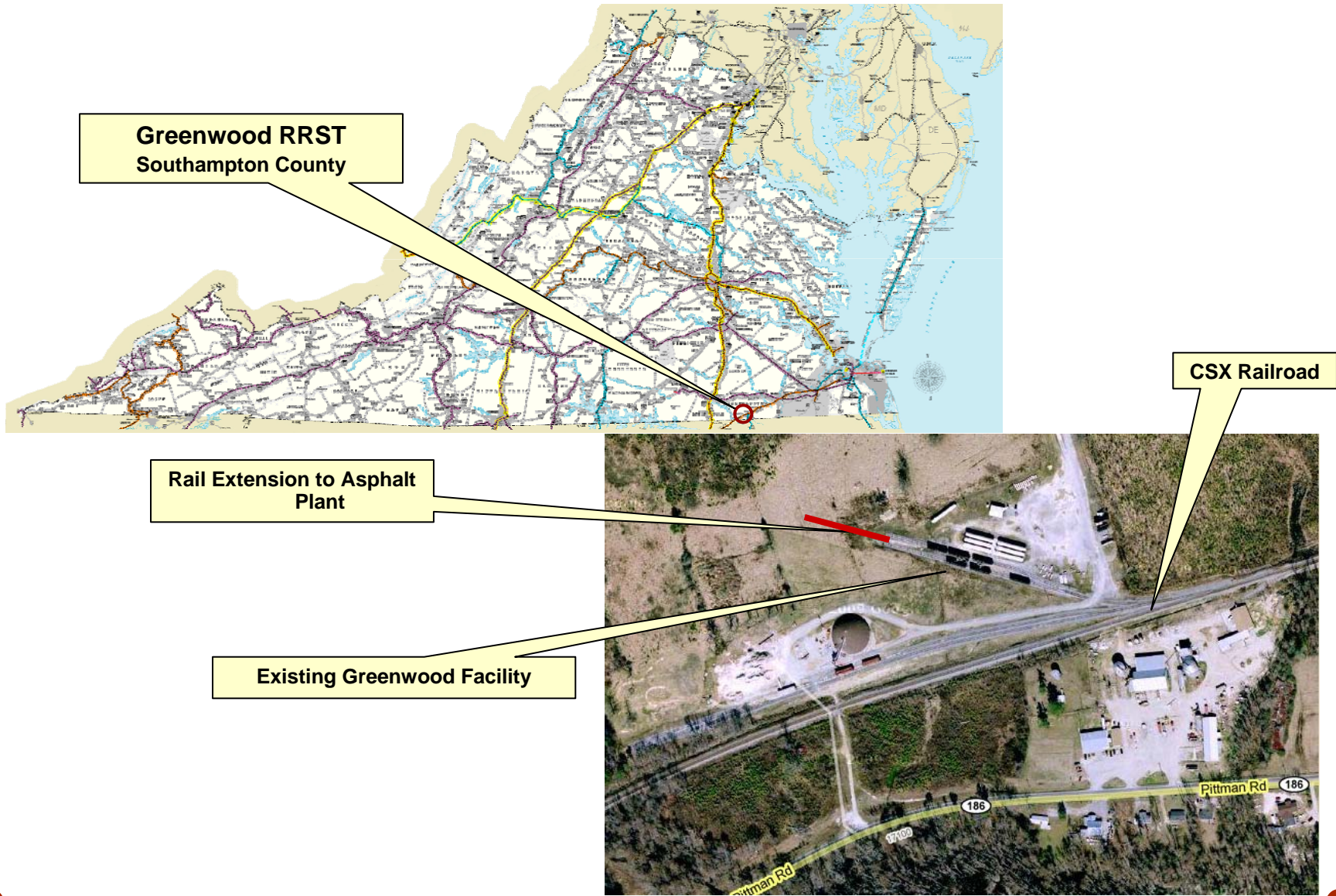


# Rail Industrial Access Program Application Briefing

## Greenwood RRST, LLC Southampton County

**Kevin B. Page**  
**Chief of Rail Transportation**

# Project Location



October 14, 2009

# Project Description

- ❑ **Greenwood RRST, LLC handles asphalt distribution for commercial companies in southeastern Virginia**
- ❑ **Construction of 290 feet of rail to support facility expansion in Southampton County**
- ❑ **Project cost: \$46,500**
- ❑ **Project has the support of the Virginia Economic Development Partnership and Franklin Southampton Economic Development**
- ❑ **Rail service to be provided by CSX**

# Project Benefits

- ❑ **Local capital investment of \$1.5 million, and creation of eight new jobs**
- ❑ **Rail access will enable approximately 300 railcar shipments per year**

# Project Scoring

- ❑ Projects are scored based the following criteria:
  - Number of annual carloads
  - Added employment
  - Commonwealth's portion of track construction per initial capital investment cost
  - Jurisdictional unemployment rate as compared to statewide
  - Project endorsement by the Virginia Economic Development Partnership or Department of Business Assistance to bring or expand industry in Virginia
  - Non-state contributions to track construction
  - Contribution to the long term viability of a rail line
- ❑ This project is recommended for funding.

# Recommended Project Funding

<b>Applicant</b>	<b>Total Project Cost</b>	<b>Recommended CTB Allocation</b>	<b>Local Match</b>
<b>Greenwood RRST, LLC</b>	<b>\$46,500</b>	<b>\$46,500</b>	<b>\$0</b>

The Rail Industrial Access program specifies that no more than \$300,000 of unmatched funds may be allocated to any one project in any fiscal year. Rail Industrial Access funds in excess of \$300,000 are matched dollar-for-dollar by the grantee or from other non-program sources.

DRPT will present this project for action at the November 2009 CTB meeting.



[www.drpt.virginia.gov](http://www.drpt.virginia.gov)

info@drpt.virginia.gov

804-786-4440