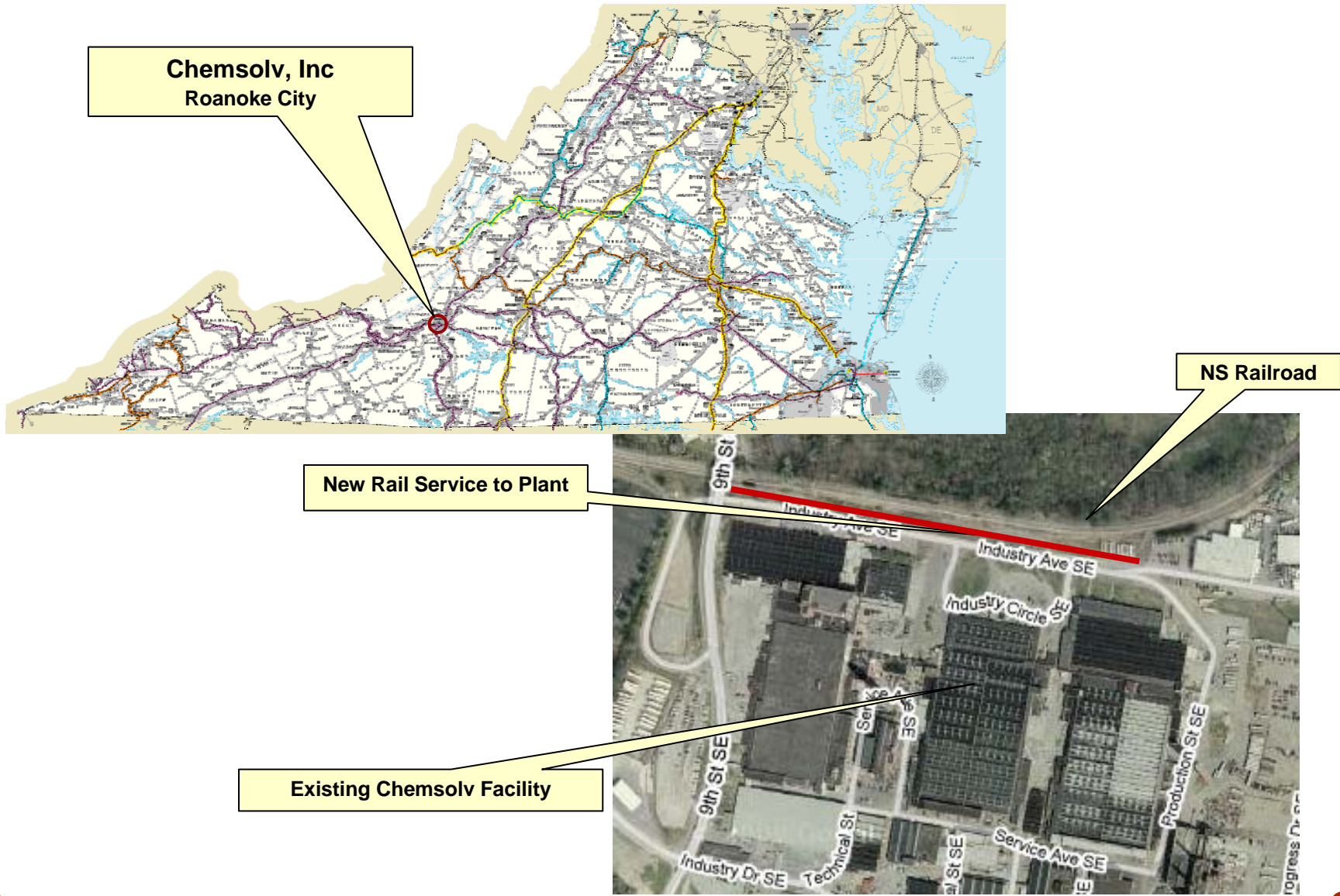


Rail Industrial Access Program Application Briefing

**ChemSolv, Inc.
City of Roanoke**

**Kevin B. Page
Chief of Rail Transportation**

Project Location



October 14, 2009

Project Description

- ❑ **Chemicals & Solvents, Inc (ChemSolve) handles chemical distribution for chemical processing, paints and coatings manufacturing, textiles, adhesives and sealants, detergents, military and pharmaceutical companies**
- ❑ **Construction of 1,800 feet of rail to support facility expansion**
- ❑ **Project cost:\$450,000**
- ❑ **Project has the support of the Virginia Economic Development Partnership**
- ❑ **Rail service to be provided by Norfolk Southern**

Project Benefits

- ❑ **Local capital investment of \$2.1 million, and creation of 10 new jobs**
- ❑ **Rail access will enable approximately 200 railcar shipments per year**

Project Scoring

- ❑ Projects are scored based the following criteria:
 - Number of annual carloads
 - Added employment
 - Commonwealth's portion of track construction per initial capital investment cost
 - Jurisdictional unemployment rate as compared to statewide
 - Project endorsement by the Virginia Economic Development Partnership or Department of Business Assistance to bring or expand industry in Virginia
 - Non-state contributions to track construction
 - Contribution to the long term viability of a rail line
- ❑ This project is recommended for funding.

Recommended Project Funding

Applicant	Total Project Cost	Recommended CTB Allocation	Local Match
ChemSolv	\$450,000	\$300,000	\$150,000

The Rail Industrial Access program specifies that no more than \$300,000 of unmatched funds may be allocated to any one project in any fiscal year. Rail Industrial Access funds in excess of \$300,000 are matched dollar-for-dollar by the grantee or from other non-program sources.

DRPT will present this project for action at the November 2009 CTB meeting.



www.drpt.virginia.gov

info@drpt.virginia.gov

804-786-4440